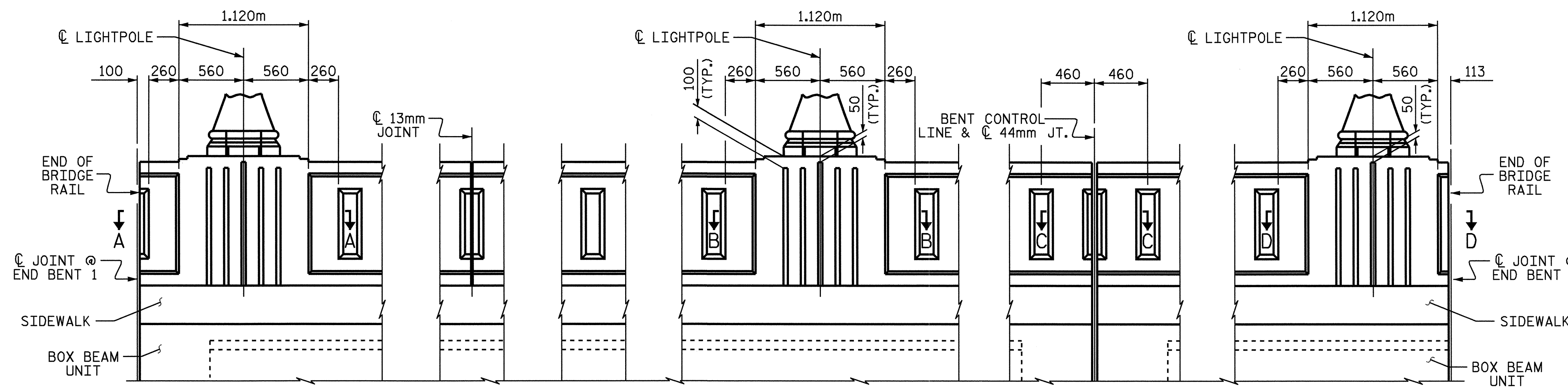


NOTES

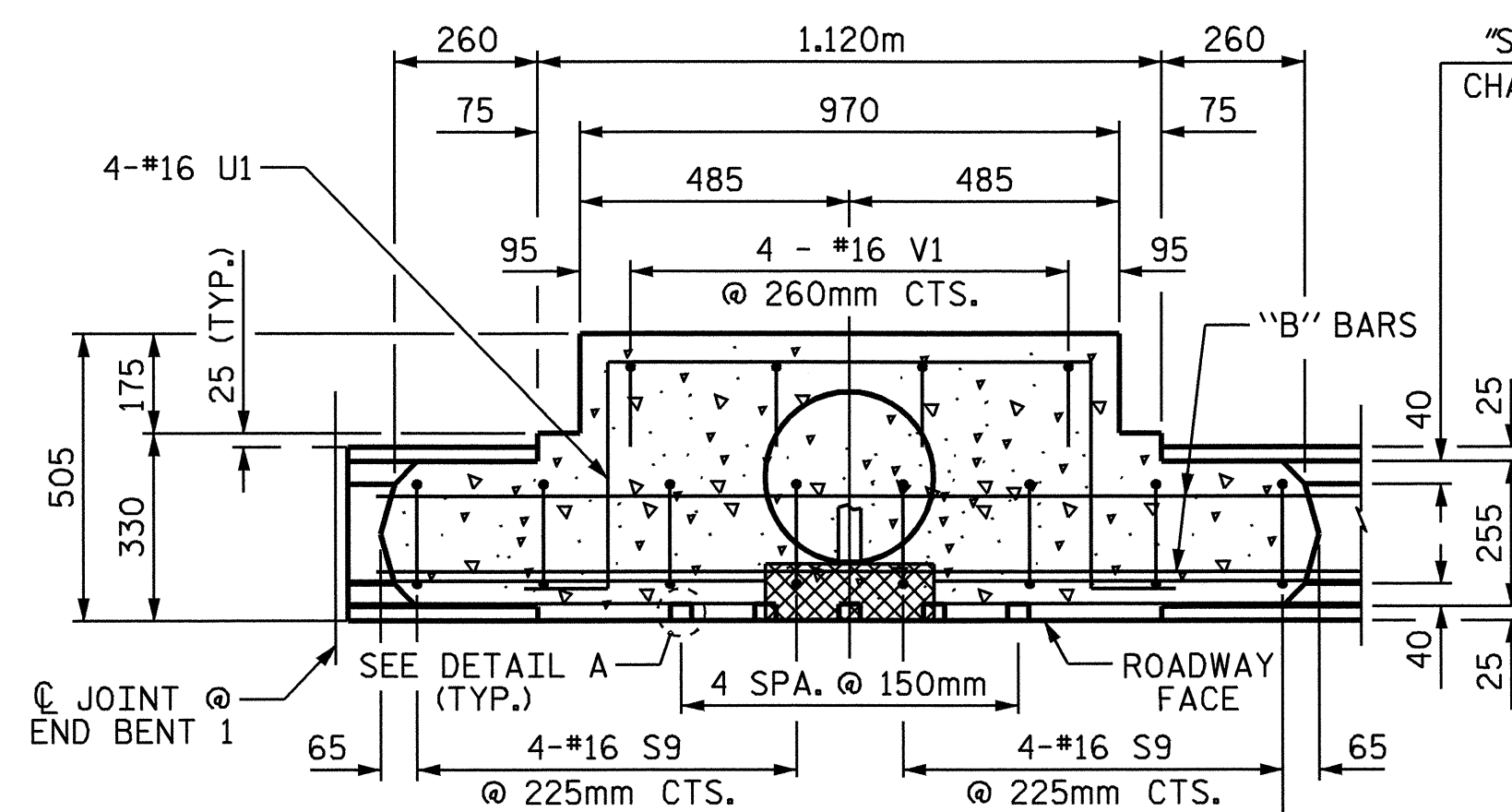
FOR ELECTRICAL CONDUIT SYSTEM, SEE ELECTRICAL CONDUIT SYSTEM SHEET.

REINFORCING STEEL IN RAIL MAY BE SHIFTED SLIGHTLY TO CLEAR ELECTRICAL JUNCTION BOX.

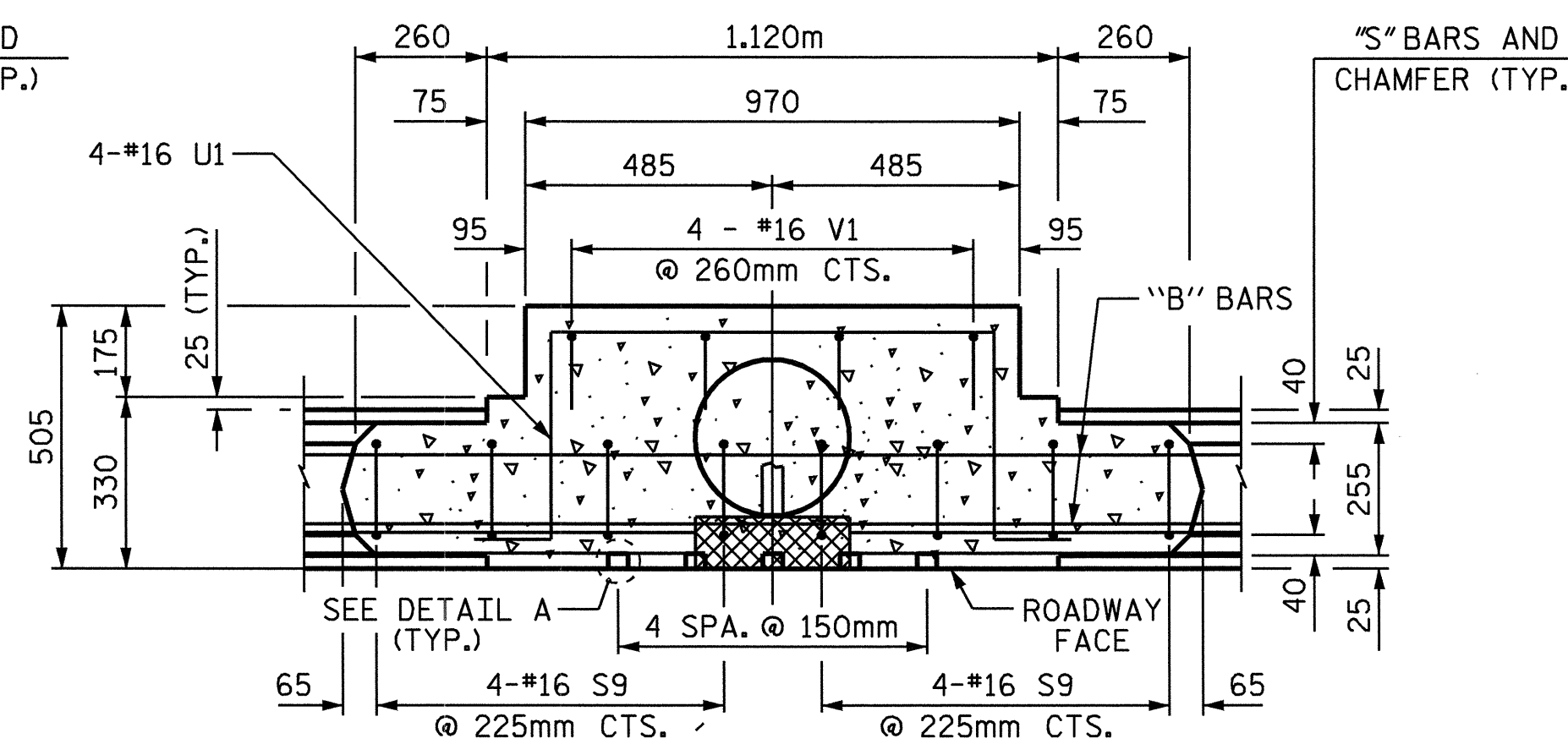


ROADWAY ELEVATION OF RAIL

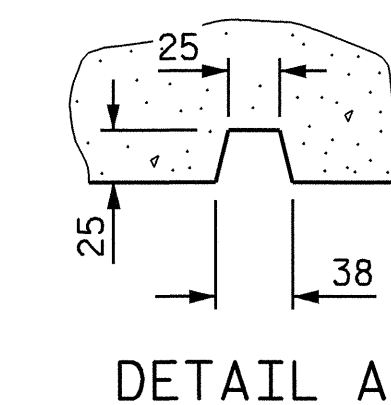
(LEFT SIDE)



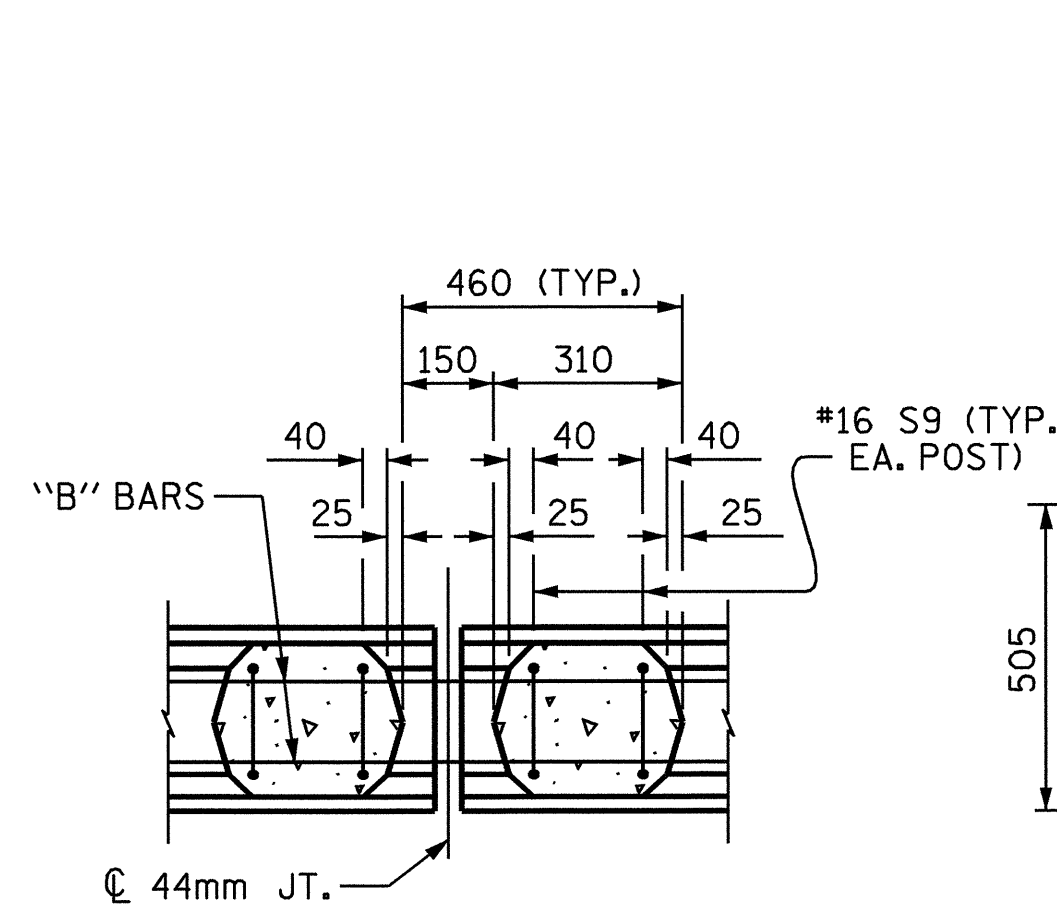
SECTION A-A
(PILASTER @ END BENT 1)



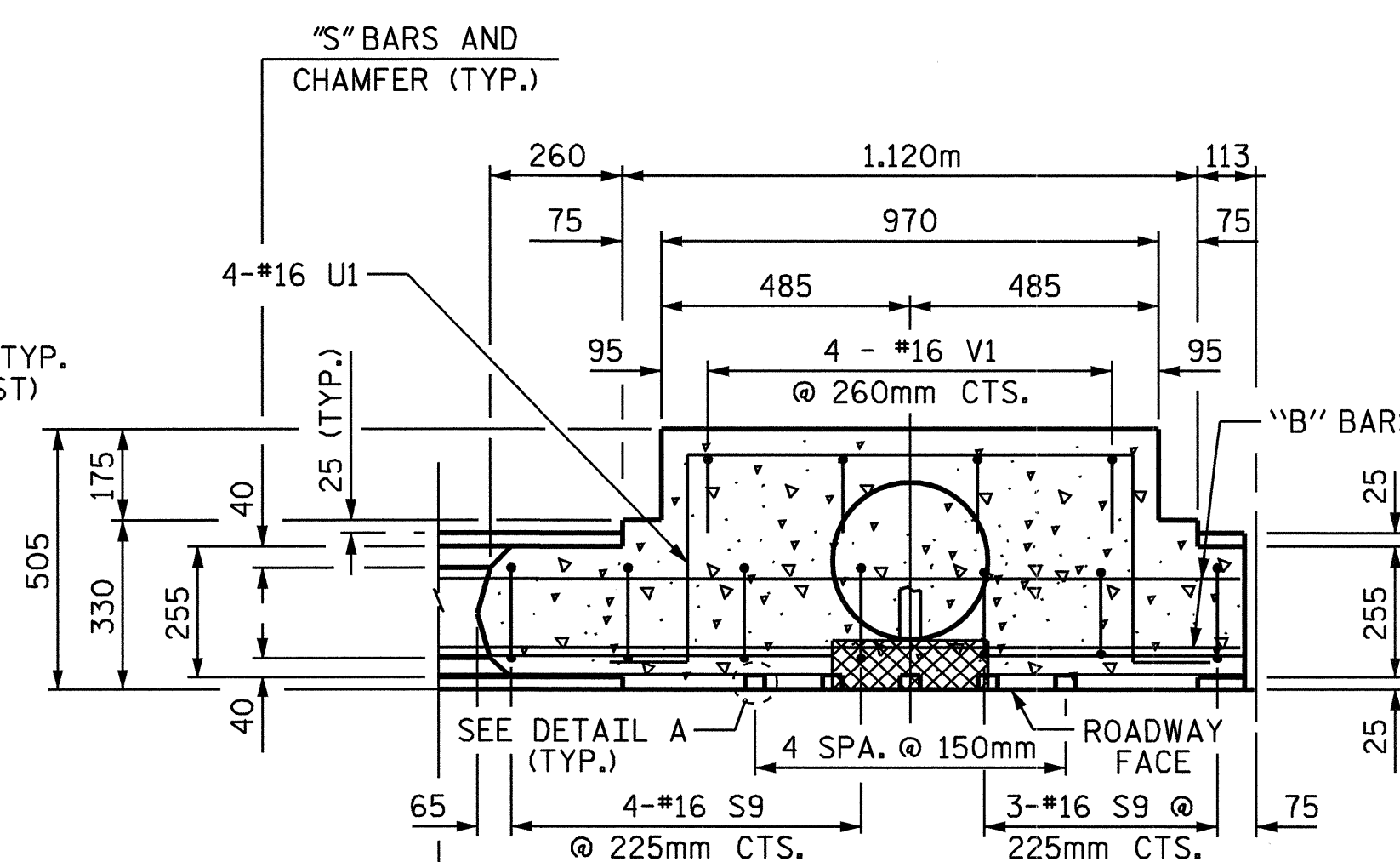
SECTION B-B
(PILASTER @ LIGHTPOLE POLE)



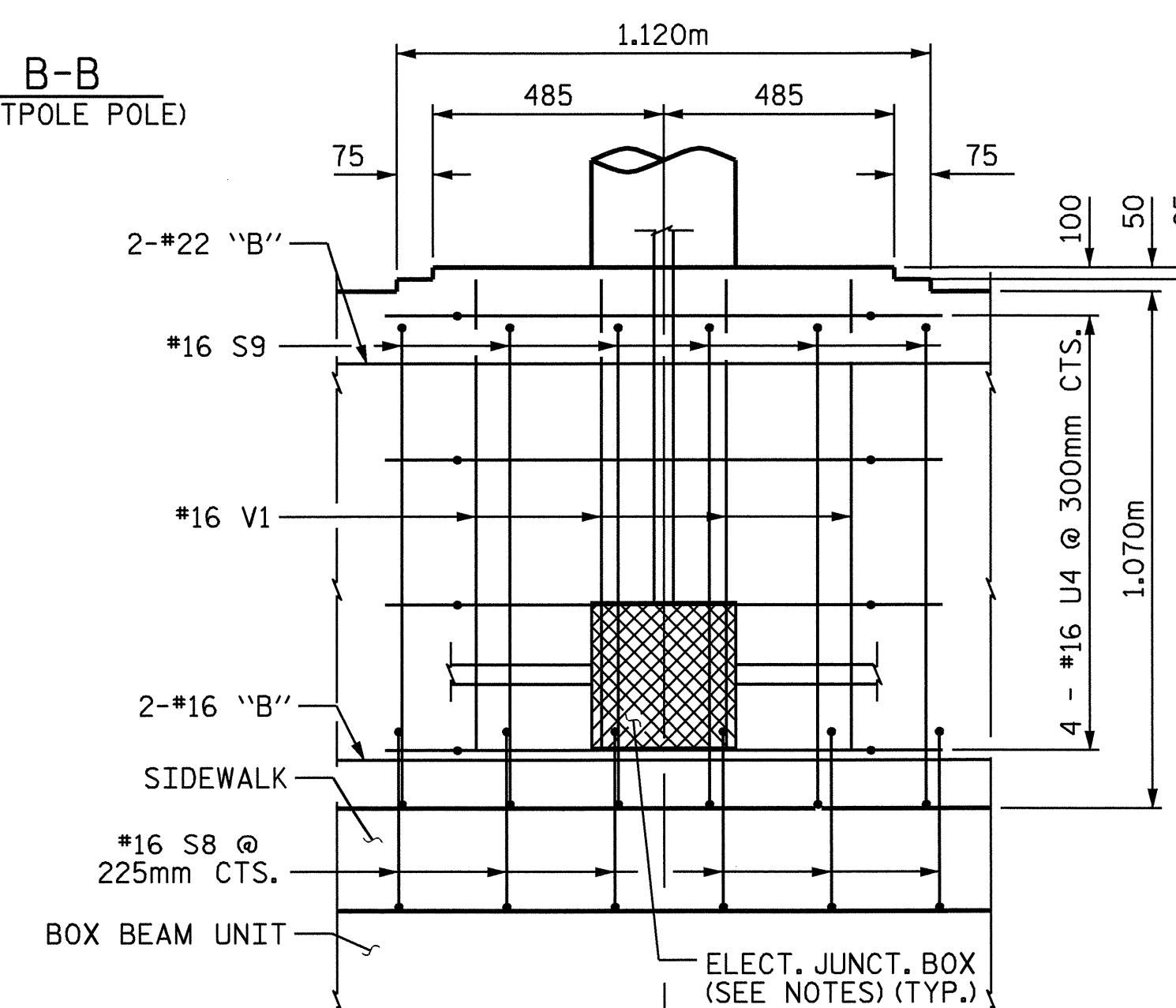
DETAIL A



SECTION C-C
(WINDOW OVER JOINT)

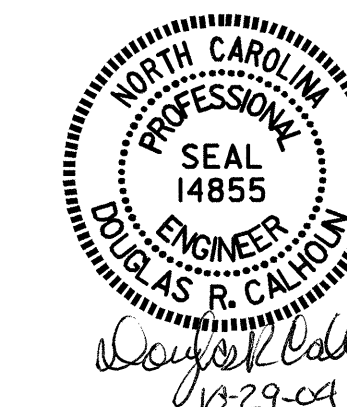


SECTION D-D
(PILASTER @ END BENT 2)



INTERIOR VIEW

(SHOWING TYPICAL REINFORCING STEEL IN LIGHT POLE PILASTERS) (CHAMFERS NOT SHOWN FOR CLARITY)



PROJECT NO. B-2583
MADISON COUNTY
 STATION: 12+21.750 -L-

SHEET 1 OF 13

STATE OF NORTH CAROLINA
 DEPARTMENT OF TRANSPORTATION
 RALEIGH

**CLASSIC CONCRETE
 BRIDGE RAIL
 (LEFT SIDE)**

REVISIONS						SHEET NO.
NO.	BY:	DATE:	NO.	BY:	DATE:	S-26
1			3			TOTAL SHEETS
2			4			112

DRAWN BY : T. A. HARRIS DATE : 7/28/04
 CHECKED BY : K. P. SEDA DATE : 8/17/04