

NOTES

STIRRUPS IN CAP MAY BE SHIFTED AS NECESSARY TO CLEAR ANCHOR BOLTS.

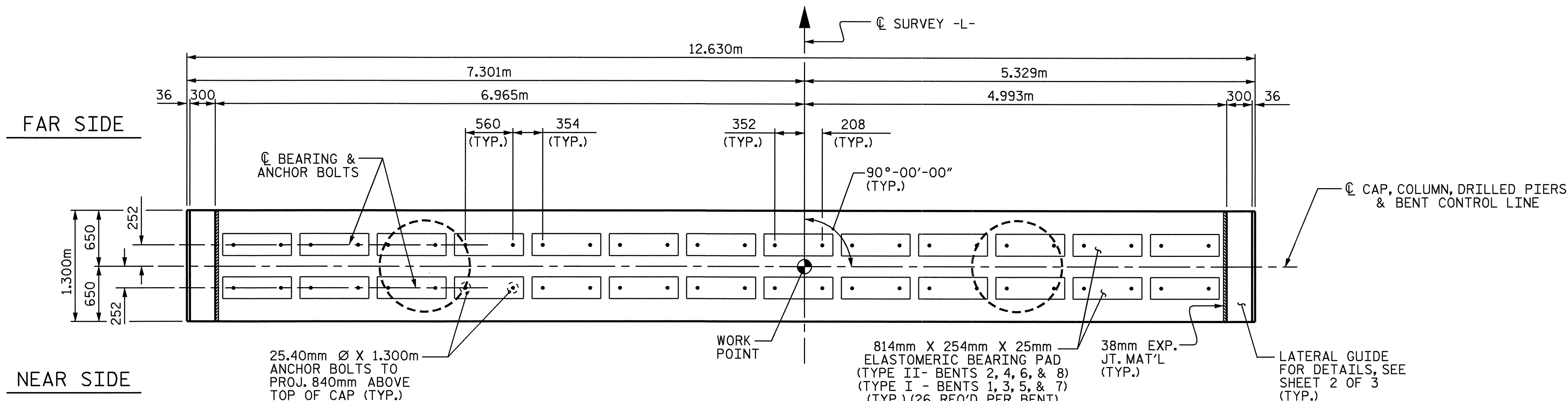
HOOKS ON "V" BARS MAY BE TURNED AS NECESSARY FOR PLACING REINFORCING STEEL.

ALL STEEL IN DRILLED PIERS IS INCLUDED IN THE PAY ITEMS FOR "REINFORCING STEEL" AND "SPIRAL COLUMN REINFORCING STEEL".

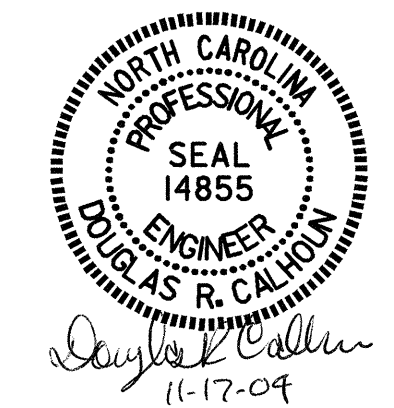
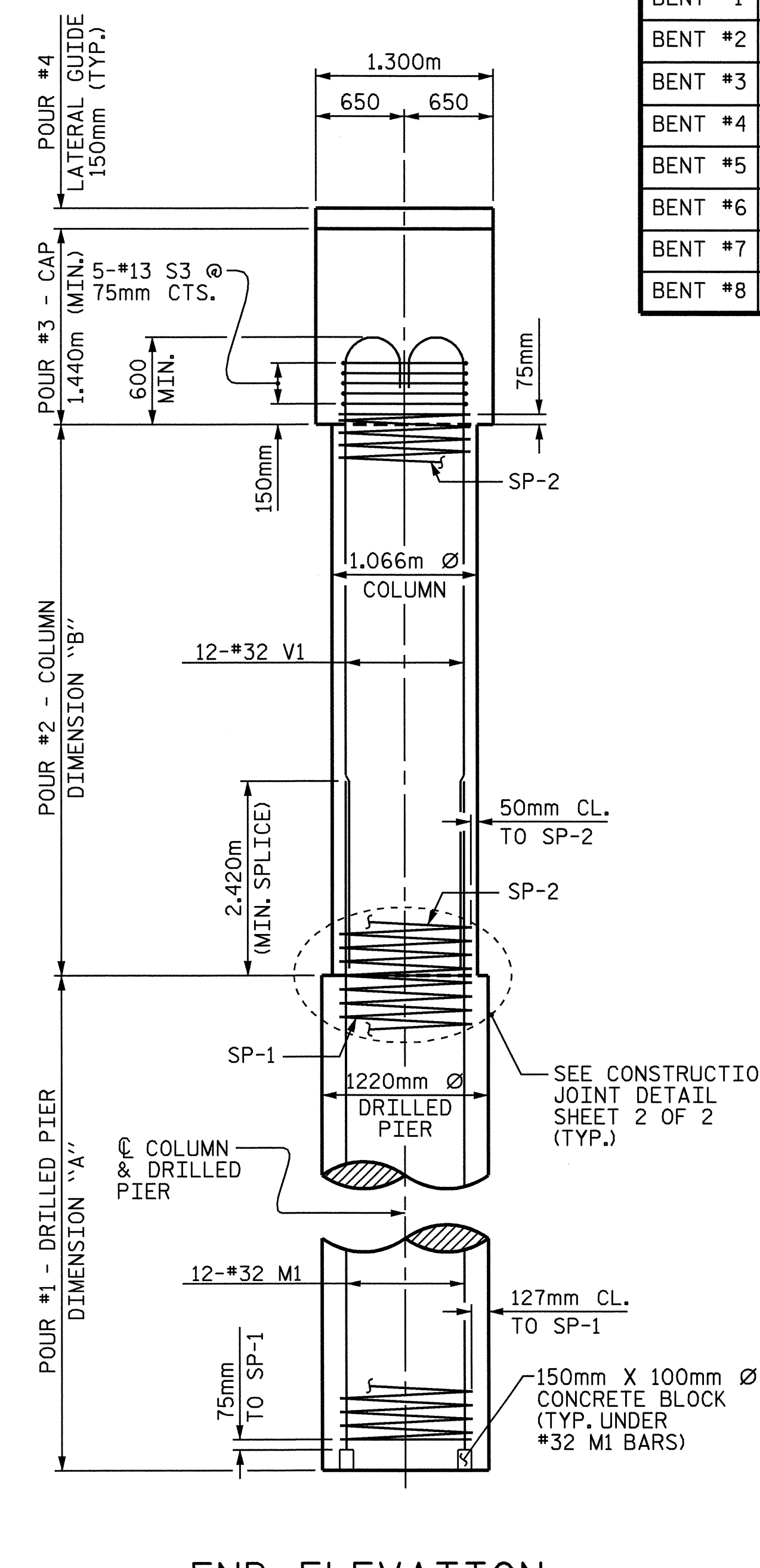
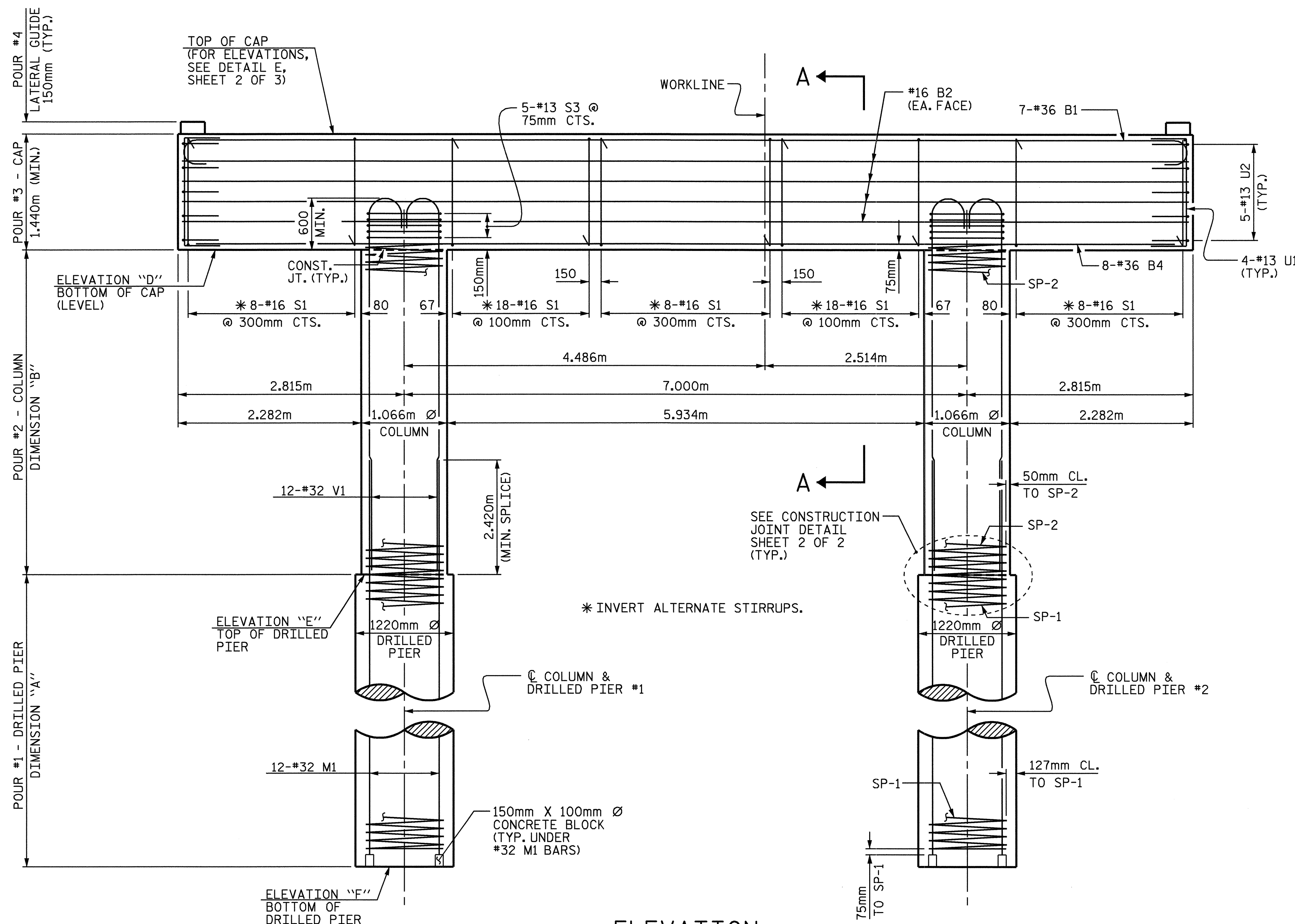
THE LATERAL GUIDE AT EACH END OF THE BOX BEAM IS NOT TO BE POURED UNTIL AFTER THE BOX BEAMS ARE IN PLACE.

THE CONTRACTOR'S ATTENTION IS CALLED TO THE FACT THAT THE LONGITUDINAL REINFORCEMENT FOR THE DRILLED PIER IS DETAILED WITH 1 METER OF EXTRA LENGTH.

SPLICING OF THE LONGITUDINAL BARS IN THE DRILLED PIERS WILL NOT BE PERMITTED.



	DIM. "A"	DIM. "B"	ELEV. "D"	ELEV. "E"	ELEV. "F"
BENT #1	5.840m	5.046m	500.886	495.840	490.000
BENT #2	5.840m	5.220m	501.060	495.840	490.000
BENT #3	5.840m	5.329m	501.169	495.840	490.000
BENT #4	4.840m	5.342m	501.182	495.840	491.000
BENT #5	4.840m	4.944m	500.784	495.840	491.000
BENT #6	6.840m	4.434m	500.274	495.840	489.000
BENT #7	6.340m	3.823m	499.663	495.840	489.500
BENT #8	6.340m	2.623m	498.463	495.840	489.500



PROJECT NO. B-2583
 MADISON COUNTY
 STATION: 12+21.750 -L-

SHEET 1 OF 3

STATE OF NORTH CAROLINA
 DEPARTMENT OF TRANSPORTATION
 RALEIGH

**SUBSTRUCTURE
 BENTS 1 THRU 8**

REVISIONS						SHEET NO.	
NO.	BY:	DATE:	NO.	BY:	DATE:	S-43	
1			3			TOTAL SHEETS 112	
2			4				

DRAWN BY: K. MCCAULEY DATE: 8/13/04
 CHECKED BY: W. S. ARAFAT DATE: 9/29/04

(REINFORCING STEEL, DIMENSIONS, & ELEVATIONS ARE TYPICAL FOR ALL COLUMNS & DRILLED PIERS)