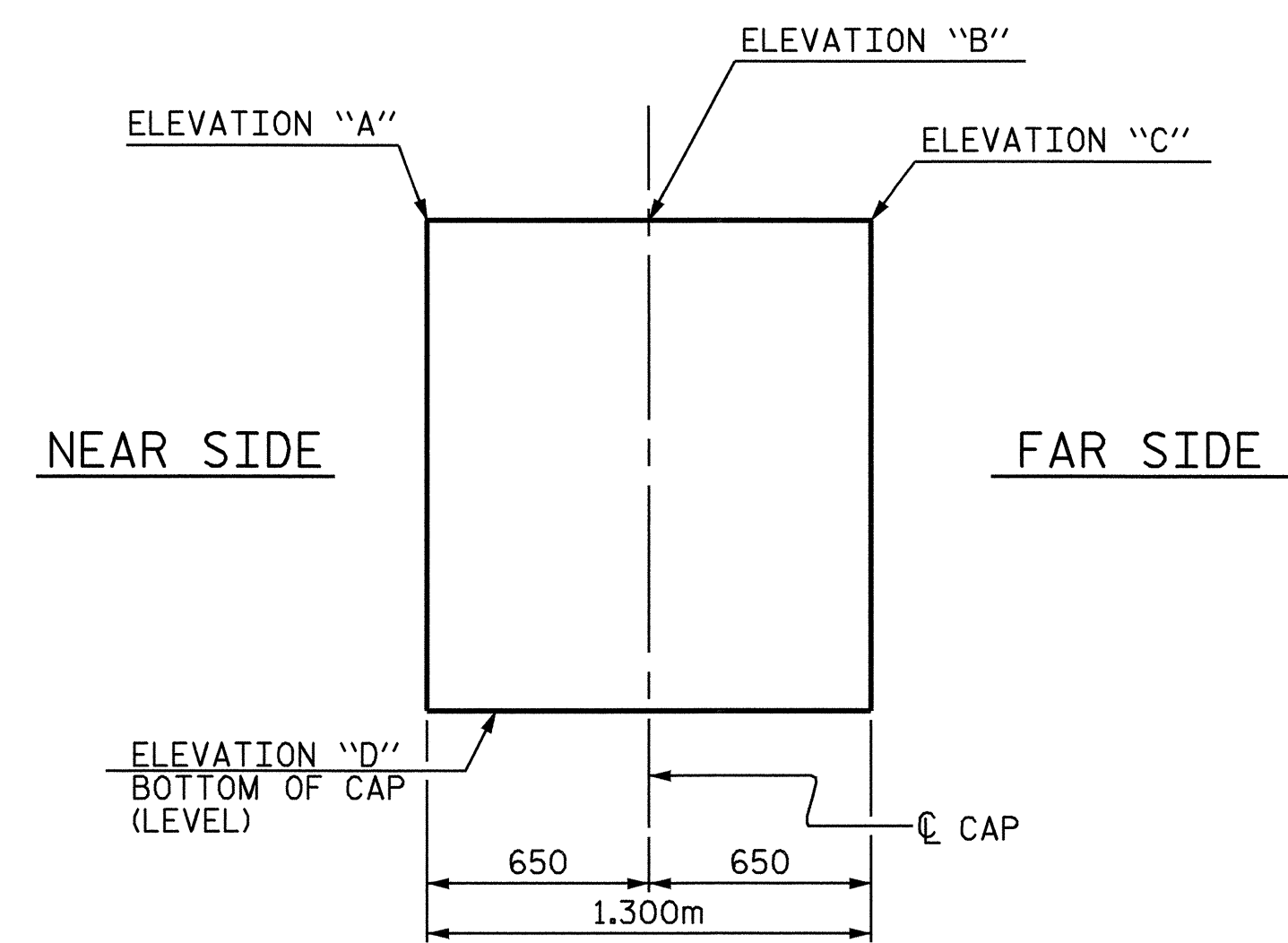
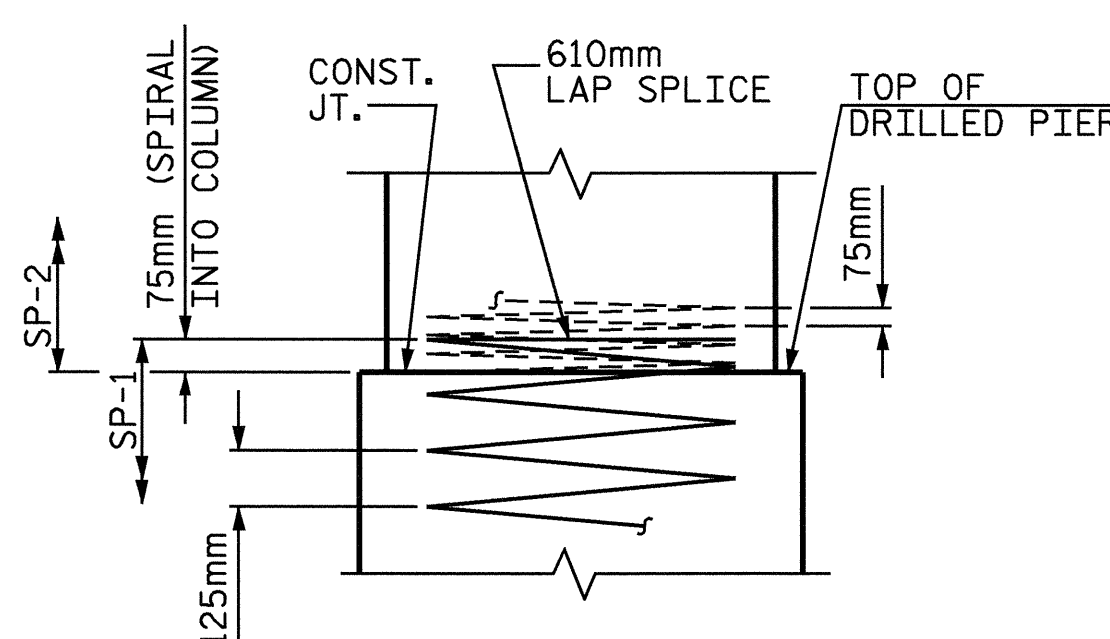


**PLAN OF COLUMNS & DRILLED PIERS**

(REINFORCING STEEL & DIMENSIONS ARE TYPICAL FOR ALL COLUMNS & DRILLED PIERS)

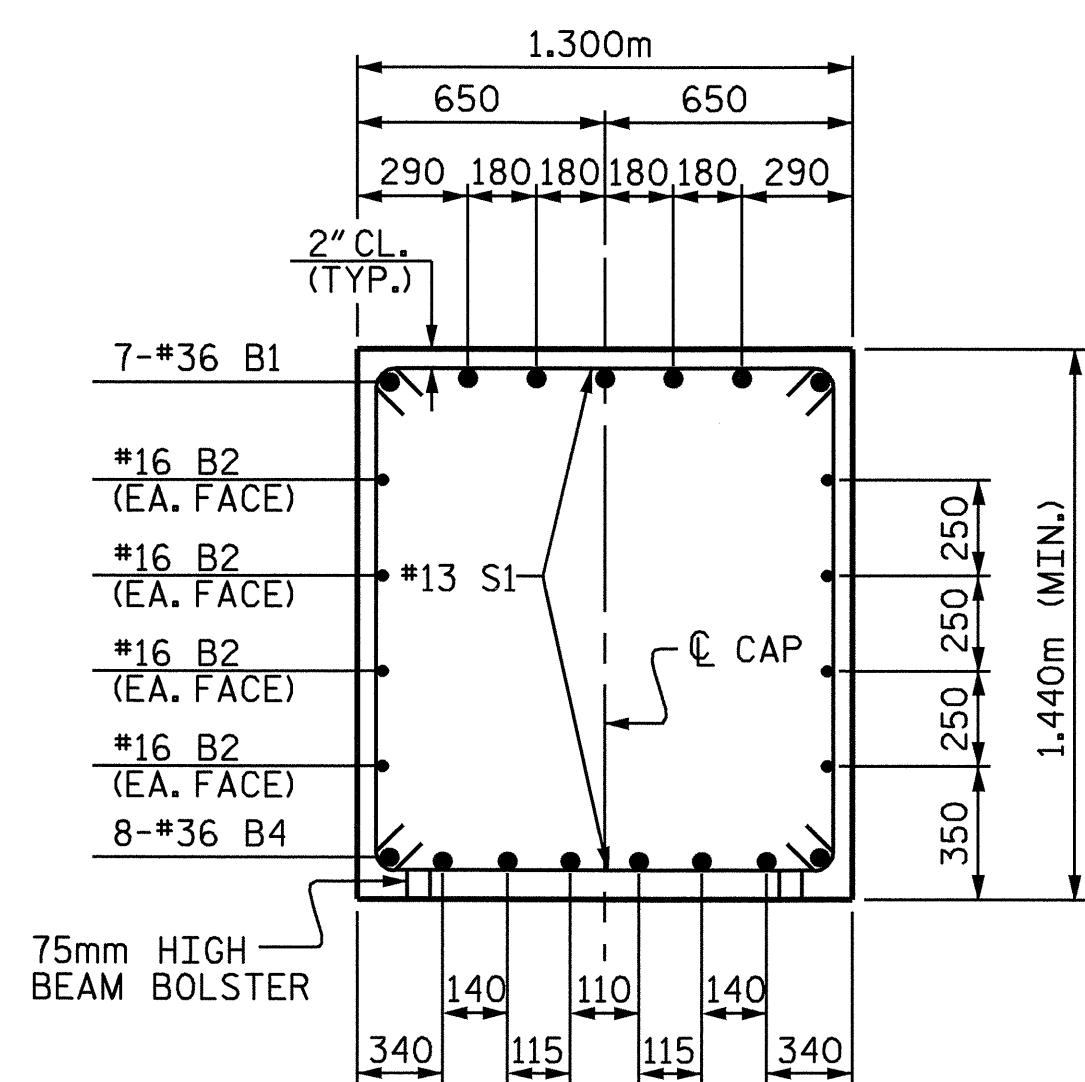


**DETAIL "E"**

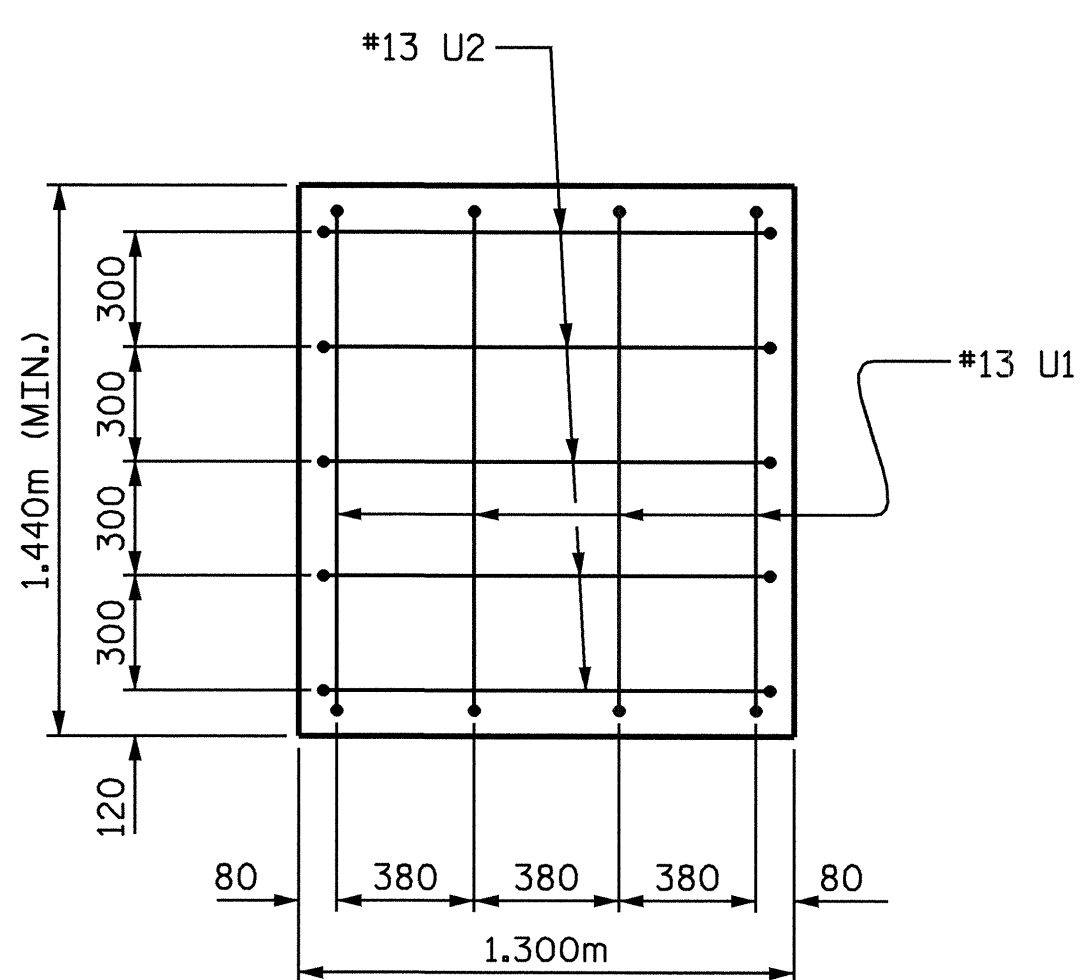


**CONSTRUCTION JOINT DETAIL**

	ELEV. "A"	ELEV. "B"	ELEV. "C"	ELEV. "D"
BENT #1	502.326	502.332	502.342	500.886
BENT #2	502.500	502.500	502.508	501.060
BENT #3	502.609	502.606	502.612	501.169
BENT #4	502.633	502.628	502.622	501.182
BENT #5	502.250	502.233	502.224	500.784
BENT #6	501.746	501.726	501.714	500.274
BENT #7	501.154	501.131	501.103	499.663
BENT #8	499.960	499.921	499.903	498.463

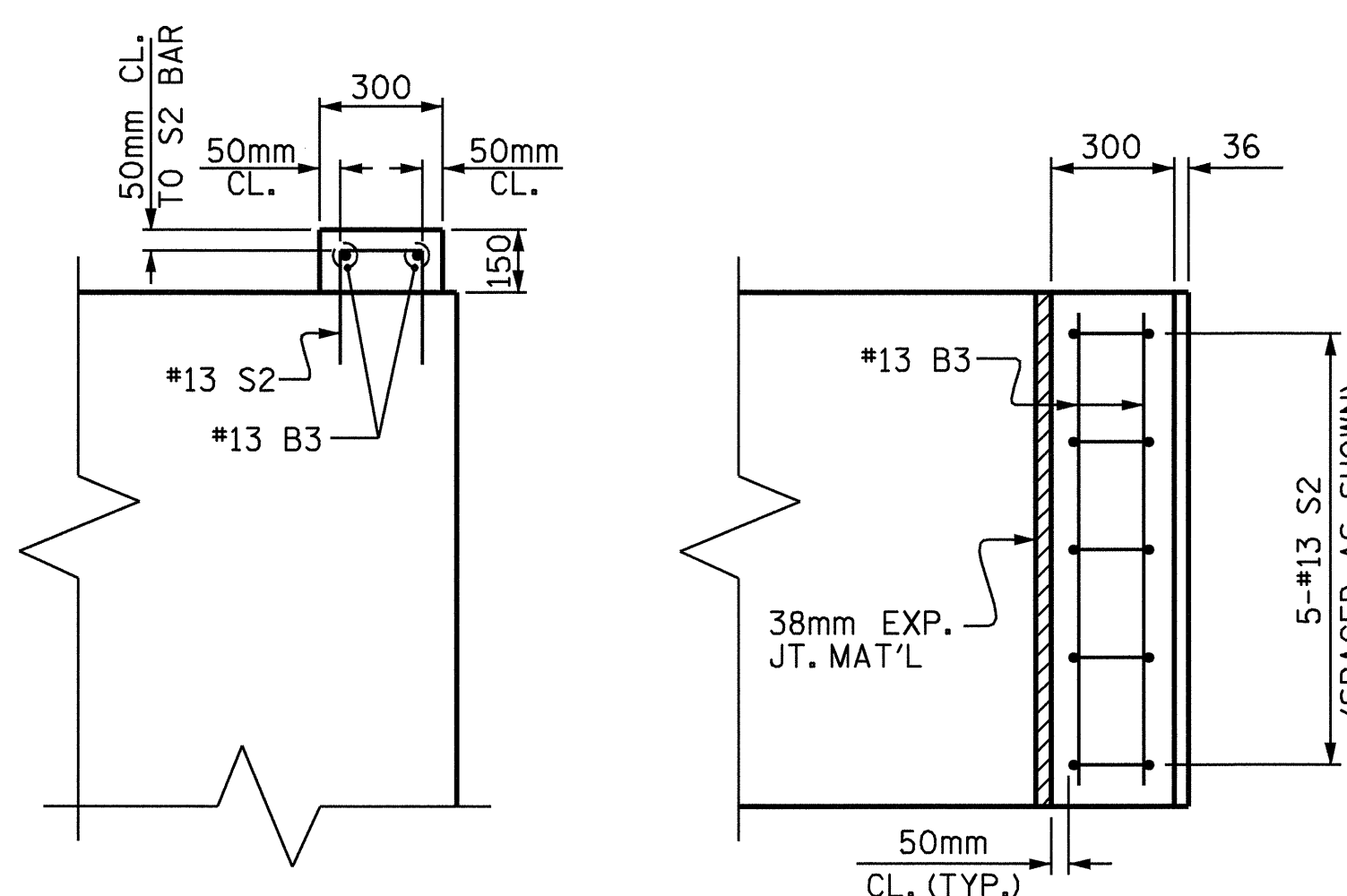


**SECTION A-A**



**END OF CAP**

(TYPICAL AT BOTH ENDS)

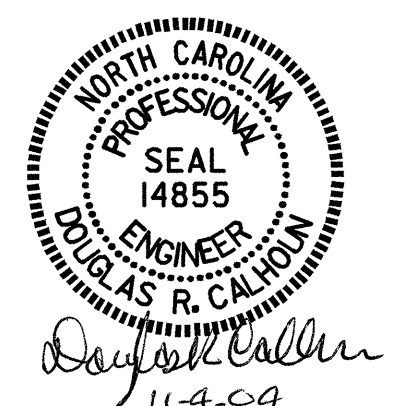


**ELEVATION**

**PLAN**

(RIGHT SIDE SHOWN, LEFT SIDE SIMILAR)

**LATERAL GUIDE**



PROJECT NO. B-2583  
MADISON COUNTY  
 STATION: 12+21.750 -L-

SHEET 2 OF 3

STATE OF NORTH CAROLINA  
 DEPARTMENT OF TRANSPORTATION  
 RALEIGH

**SUBSTRUCTURE  
 BENTS 1 THRU 8**

DRAWN BY : K. McCAULEY DATE : 8/15/04  
 CHECKED BY : W. S. ARAFAT DATE : 9/27/04

04-NOV-2004 15:33  
 W:\sqado\2583\kmccauley\Microstation\B2583\_sd\_B\*\_01.dgn  
 TAHarris

REVISIONS						SHEET NO.
NO.	BY:	DATE:	NO.	BY:	DATE:	S-44
1			3			TOTAL SHEETS
2			4			112