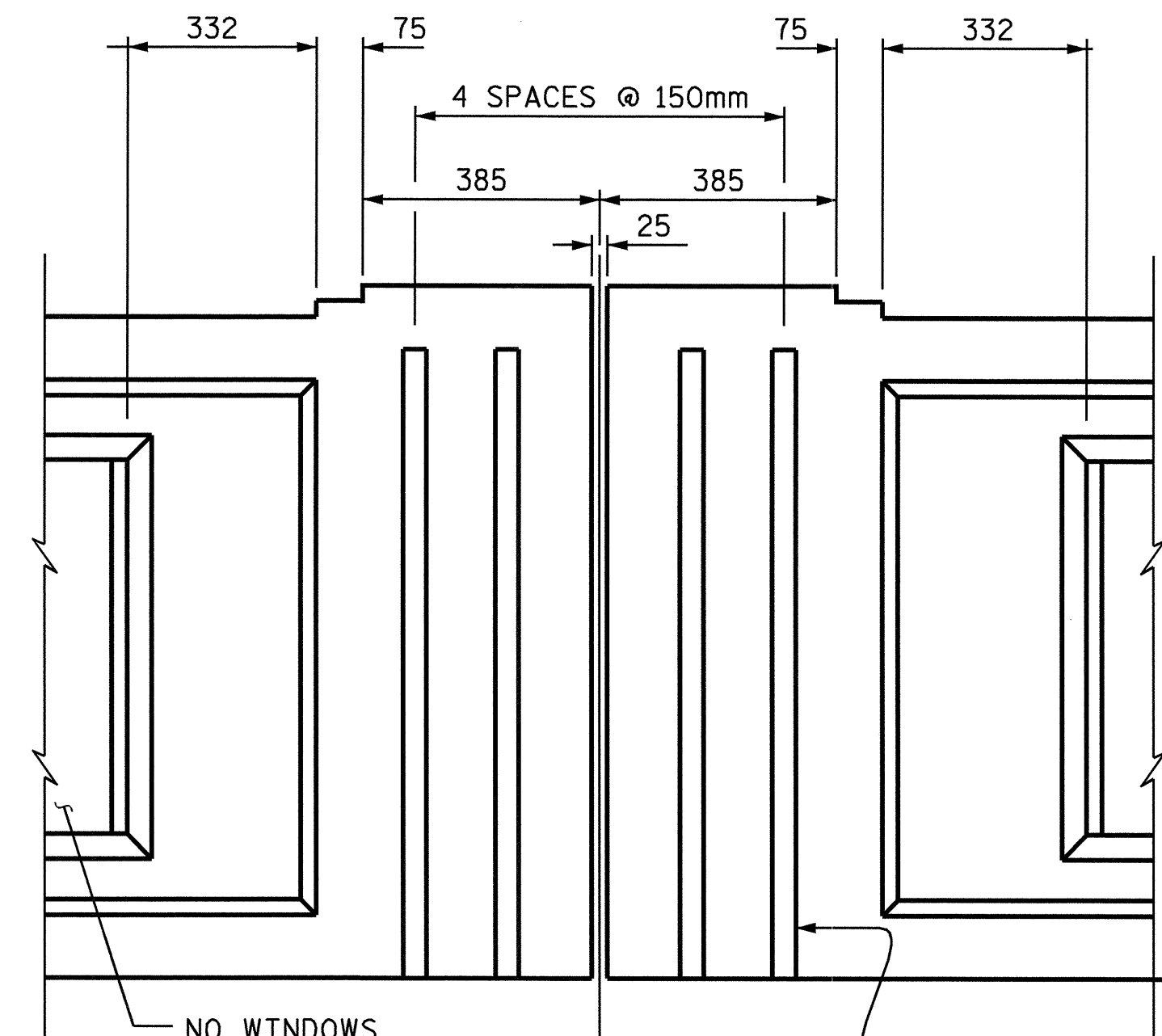
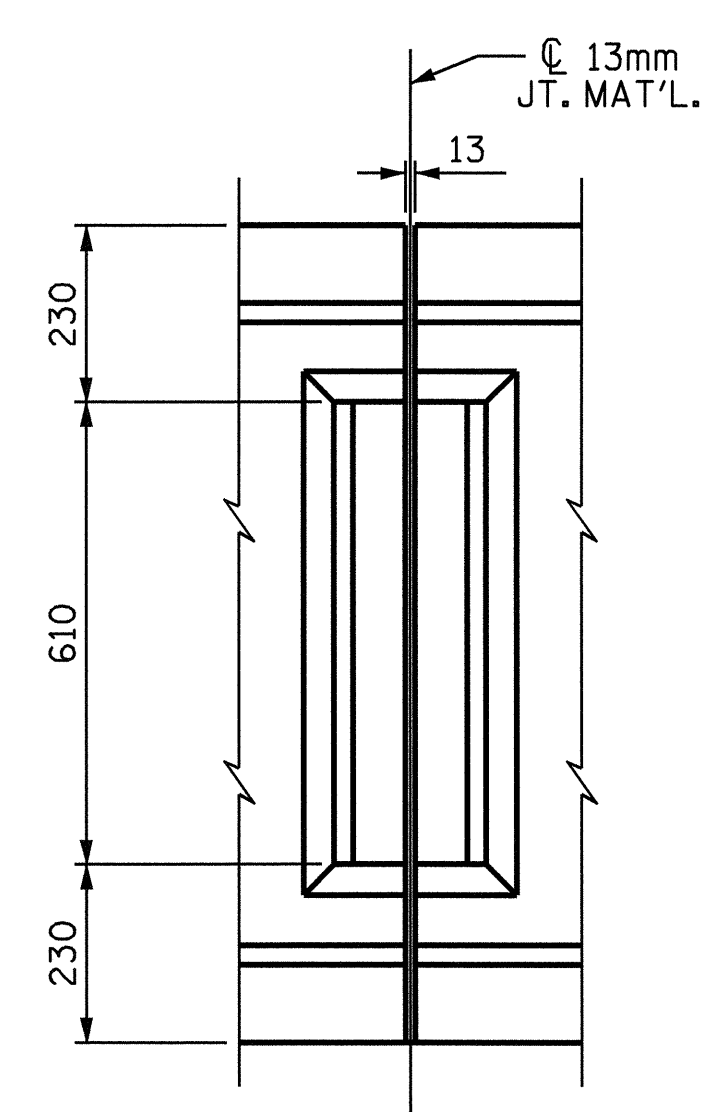


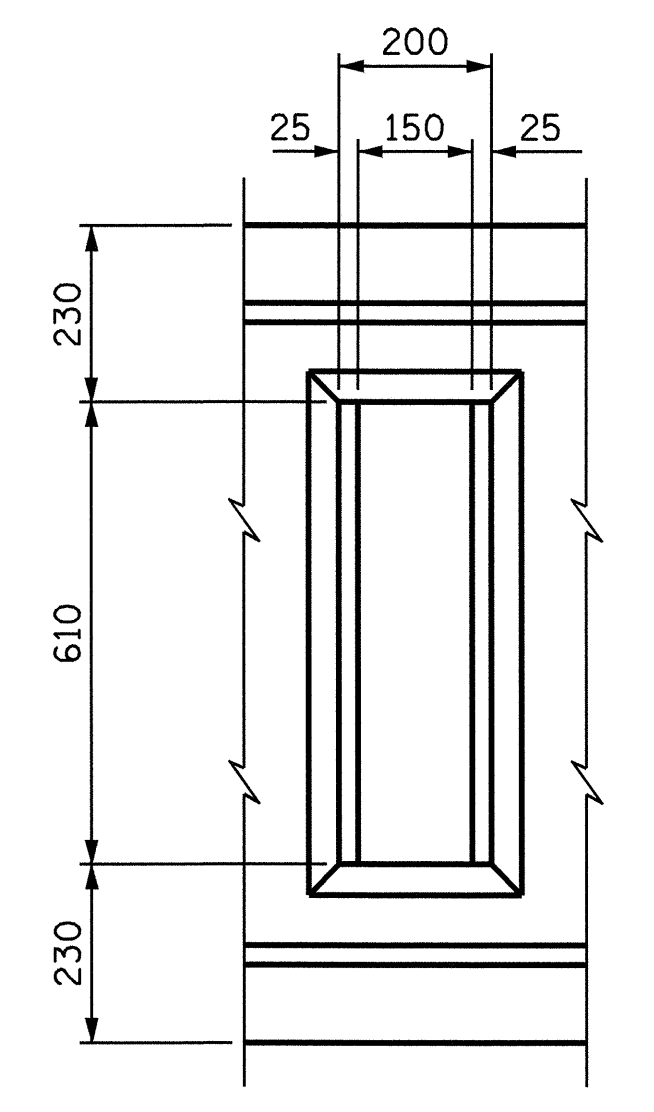
CHAMFER (TYP. WHERE SHOWN)
PILASTER @ END BENT 1



NO WINDOWS @ RIGHT SIDE
 CHAMFER (TYP. WHERE SHOWN)
PILASTER @ END BENT 2

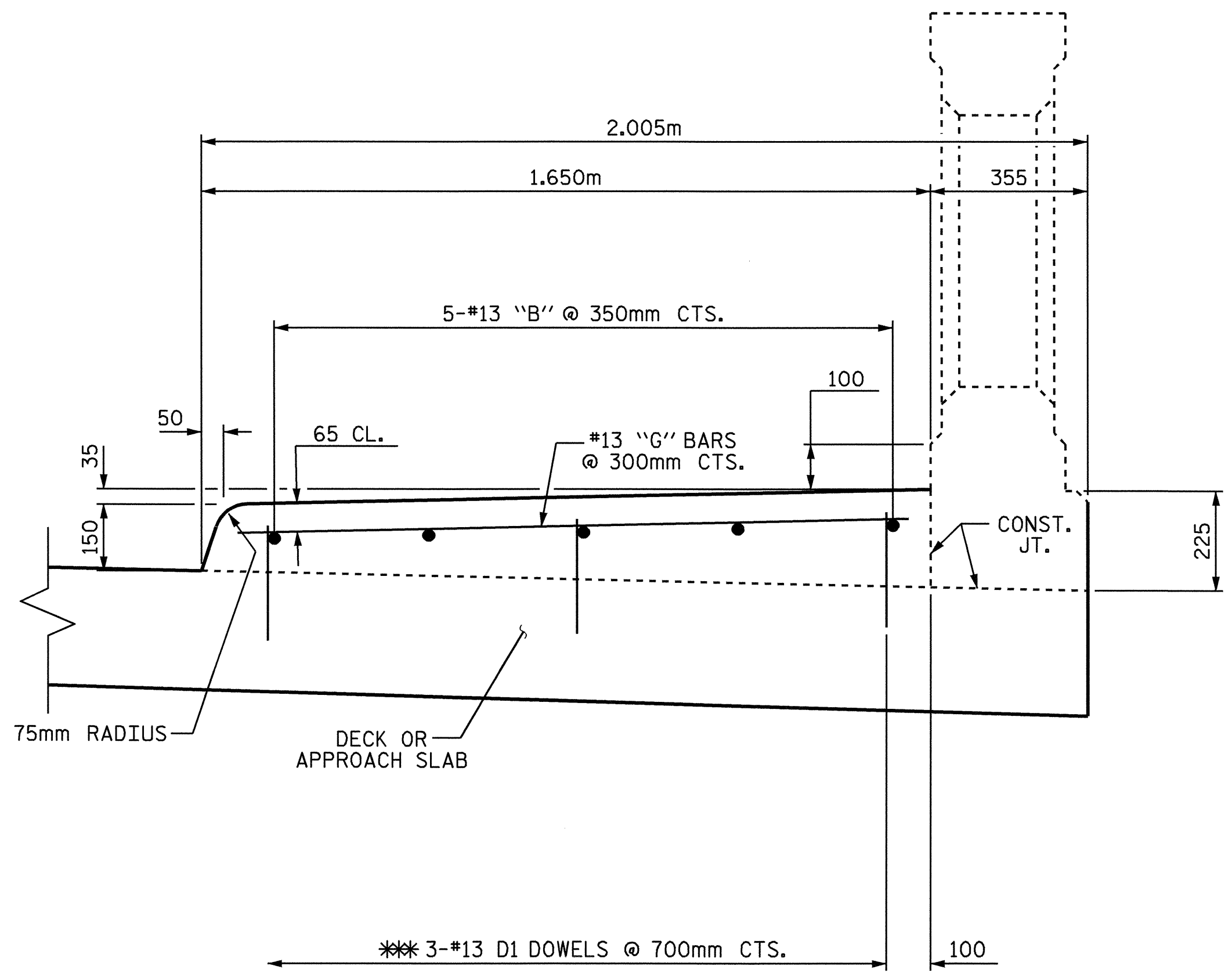


JOINT @ WINDOW



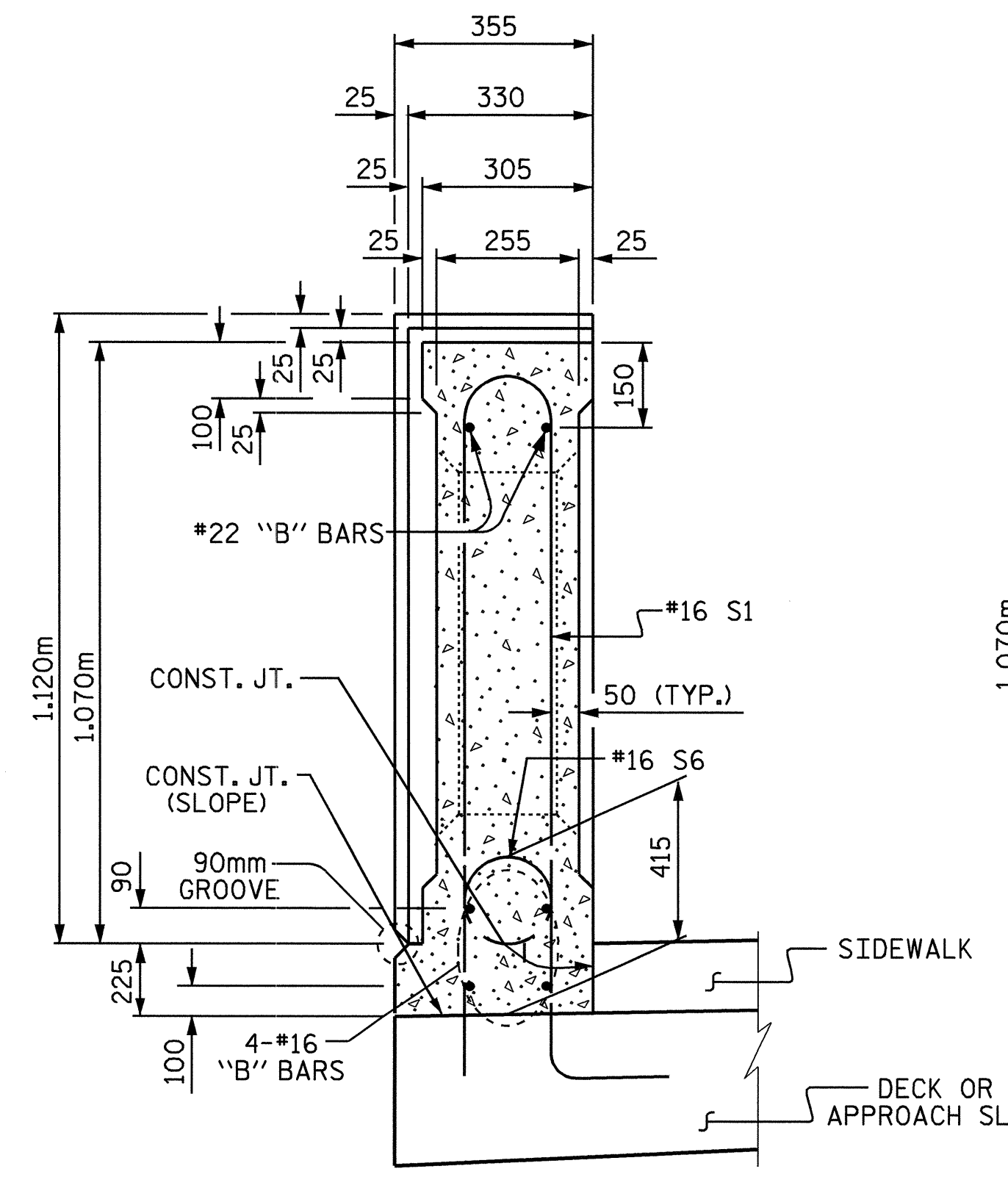
WINDOW TYPE

EXTERIOR PILASTER ELEVATIONS

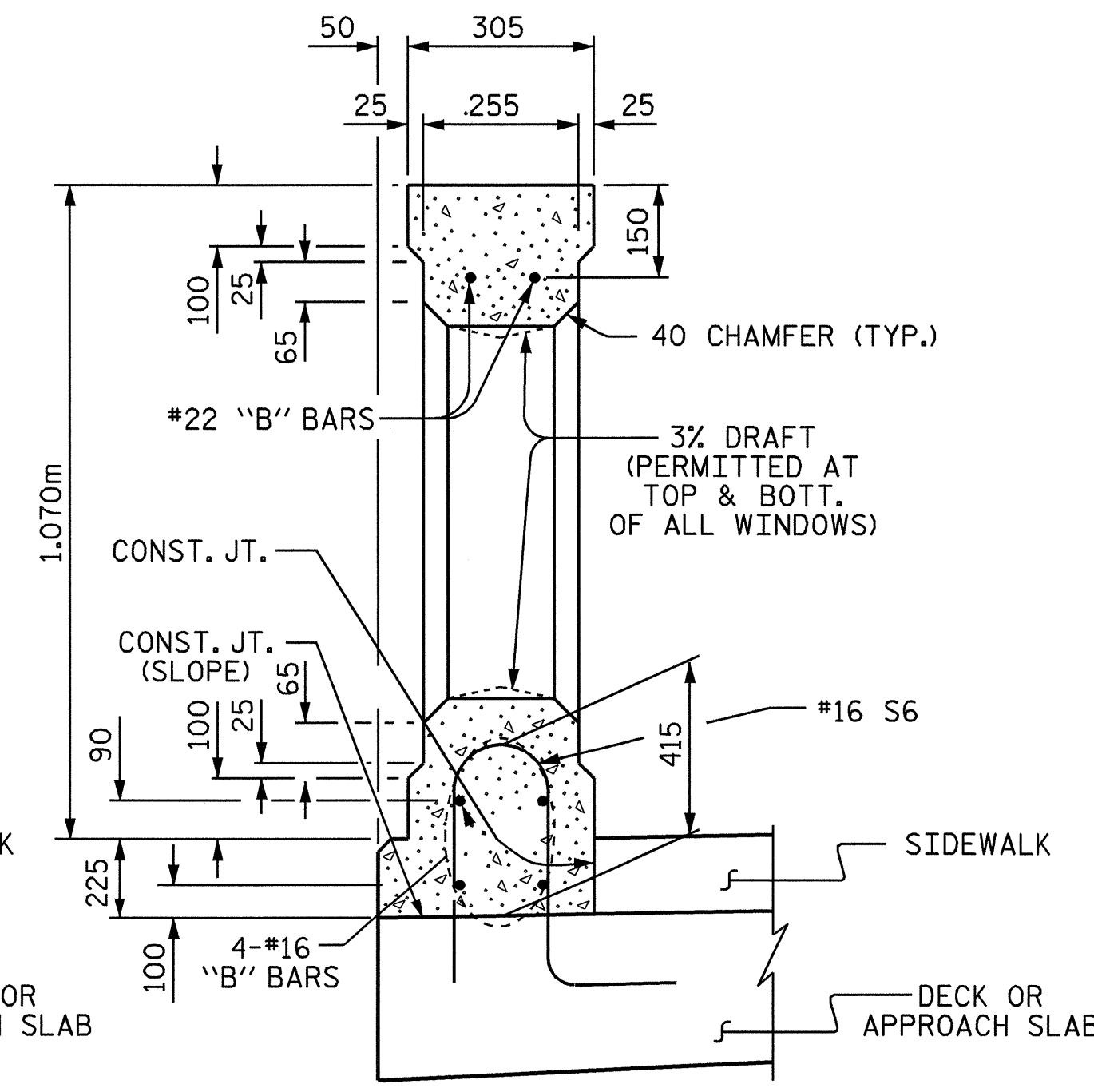


SECTION THRU SIDEWALK

*** DOWELS MAY BE PUSHED INTO GREEN CONCRETE AFTER SPAN HAS BEEN SCREEDED OFF.

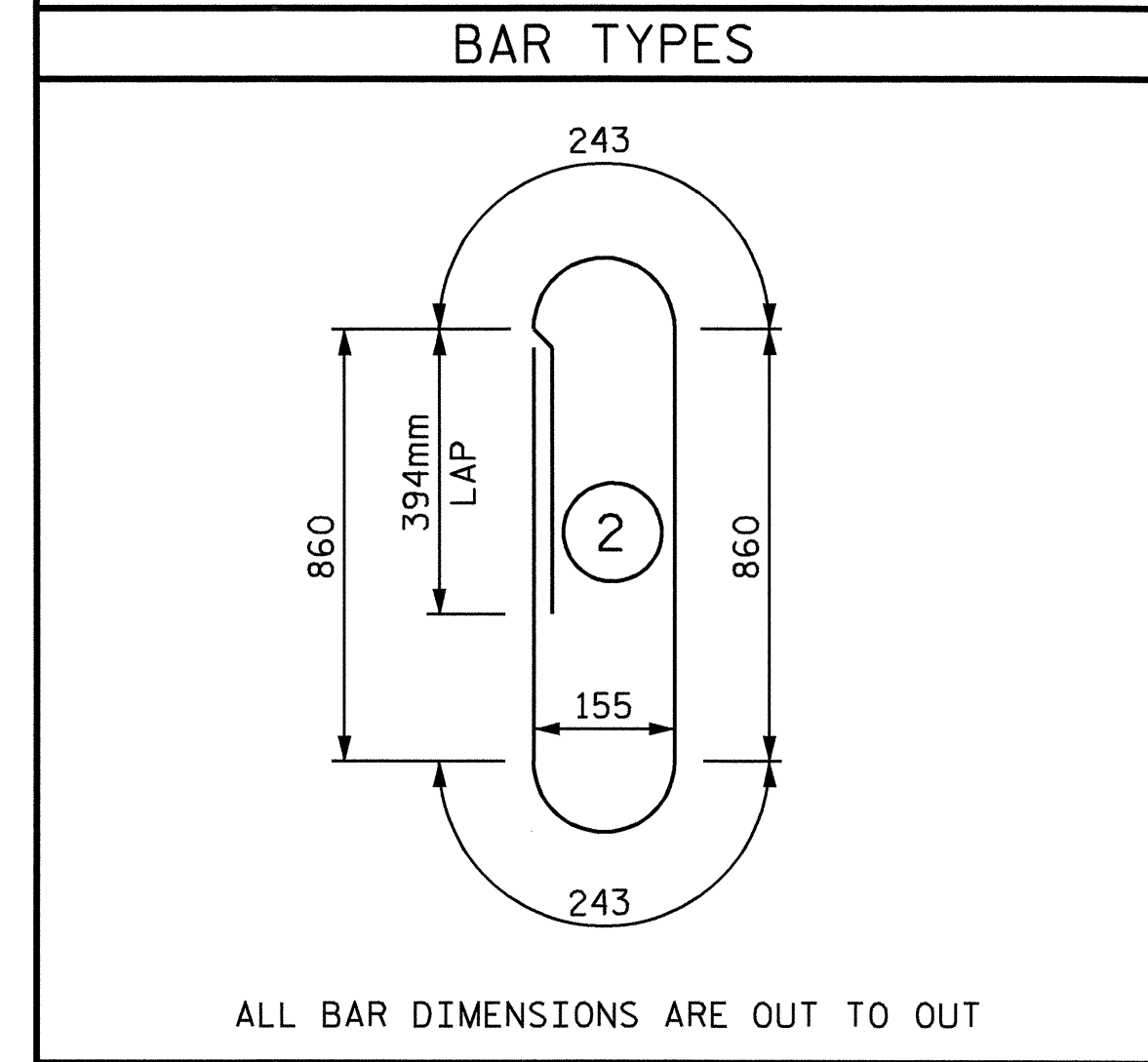


SECTION THRU POST OF RAIL

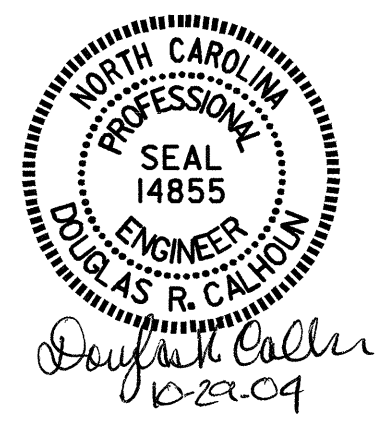


SECTION THRU WINDOW OF RAIL

| BILL OF MATERIAL | | | | | | |
|----------------------------------|-----|------|------|--------|----------------|---------|
| FOR CLASSIC BRIDGE RAILING ONLY | | | | | | |
| BAR | NO | SIZE | TYPE | LENGTH | WEIGHT | |
| * B1 | 8 | 16 | STR | 5720 | 71 | |
| * B2 | 4 | 22 | STR | 5720 | 70 | |
| * B3 | 48 | 16 | STR | 6300 | 469 | |
| * B4 | 24 | 22 | STR | 6300 | 460 | |
| * B5 | 16 | 16 | STR | 5800 | 144 | |
| * B6 | 8 | 22 | STR | 5800 | 141 | |
| * S1 | 492 | 16 | 2 | 2600 | 1985 | |
| * EPOXY COATED REINFORCING STEEL | | | | | kg | 3340 |
| CLASS AA CONCRETE | | | | | m ³ | 32.6 |
| CLASSIC CONCRETE BRIDGE RAIL | | | | | m | 112.799 |



FOR QUANTITIES FOR SIDEWALK REINFORCING STEEL AND CONCRETE ON SUPERSTRUCTURE, SEE "SUPERSTRUCTURE BILL OF MATERIAL"
 FOR QUANTITIES FOR CLASSIC CONCRETE BRIDGE RAIL AND SIDEWALK REINFORCING STEEL AND CONCRETE ON APPROACH SLAB, SEE "APPROACH SLAB BILL OF MATERIAL".



PROJECT NO. B-2583
MADISON COUNTY
 STATION: 11+03.000 -Y1-
 SHEET 7 OF 7

| REVISIONS | | | | | | SHEET NO. |
|-----------|-----|-------|-----|-----|-------|--------------|
| NO. | BY: | DATE: | NO. | BY: | DATE: | S-92 |
| 1 | | | 3 | | | TOTAL SHEETS |
| 2 | | | 4 | | | 112 |

DRAWN BY: T. A. HARRIS DATE: 12/3/02
 CHECKED BY: W. S. ARAFAT DATE: 7/9/04

29-OCT-2004 09:51
 W:\squad0\b2583\taharris\lmarostation\str2\b2583_sd_br_02.dgn
 TAHarris