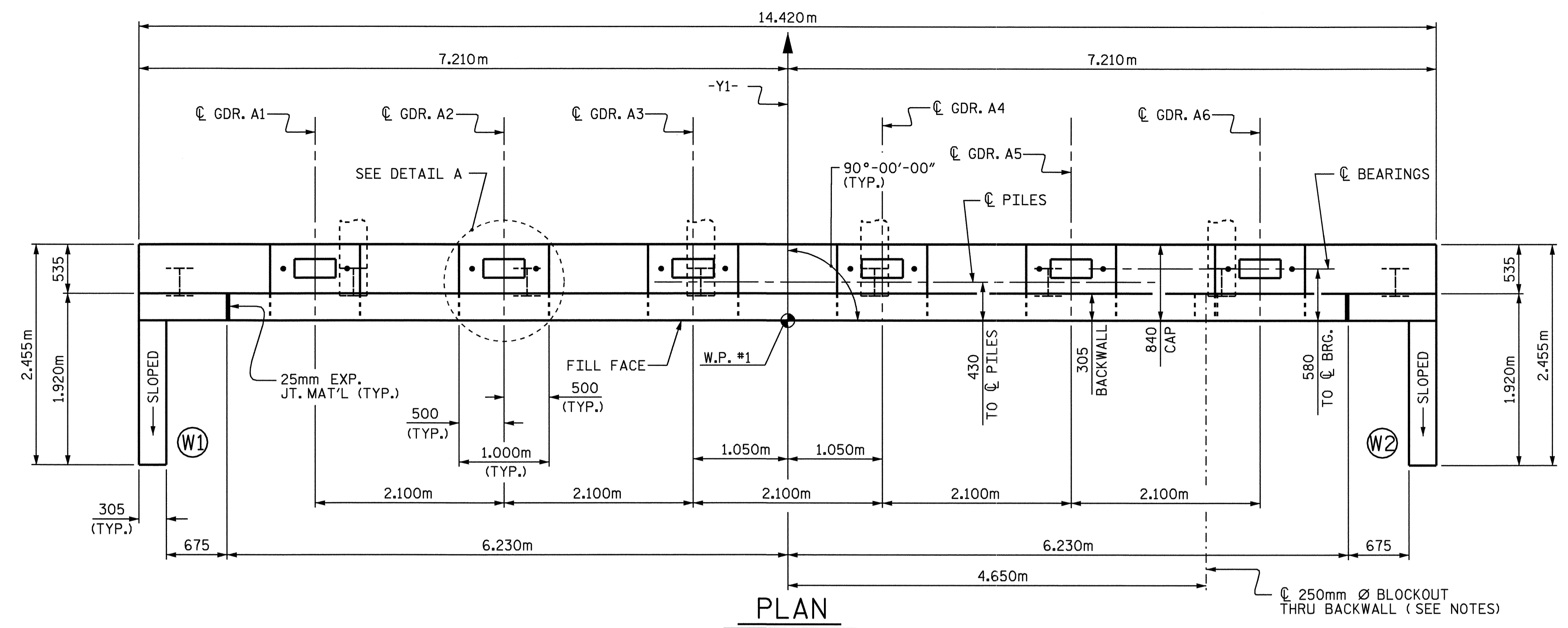
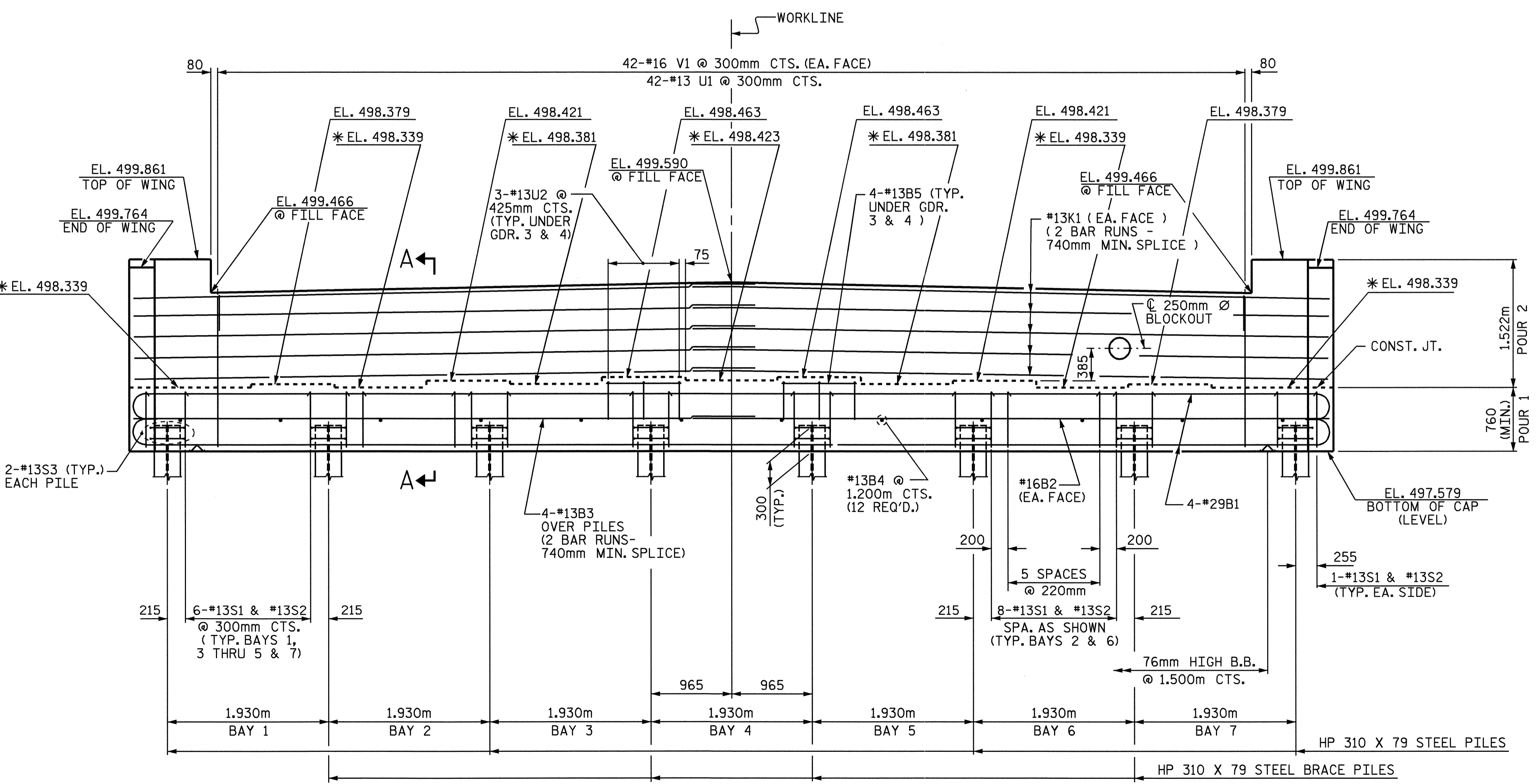


NOTES

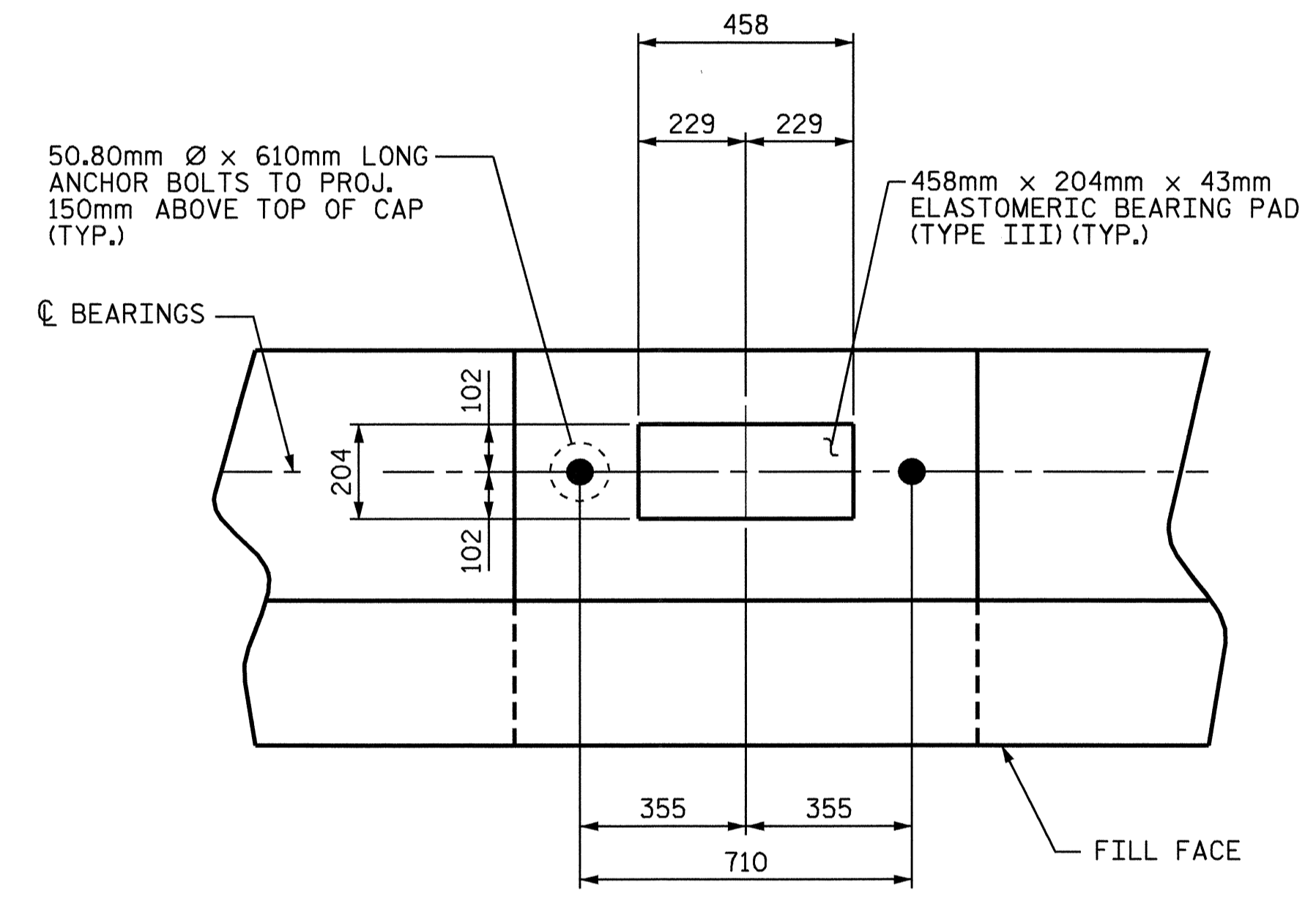
- STIRRUPS IN CAP MAY BE SHIFTED AS NECESSARY TO CLEAR ANCHOR BOLTS.
- BACKWALL SHALL BE PLACED BEFORE APPLYING THE EPOXY PROTECTIVE COATING.
- FOR EPOXY PROTECTIVE COATING, SEE SPECIAL PROVISIONS.
- THE TOP SURFACE AREAS OF THE END BENT CAPS SHALL BE CURED IN ACCORDANCE WITH THE STANDARD SPECIFICATIONS EXCEPT THAT THE MEMBRANE CURING COMPOUND METHOD SHALL NOT BE USED.
- THE TOP SURFACE OF THE CAP EXCEPT THE BRIDGE SEAT BUILDUPS SHALL BE SLOPED TRANSVERSELY FROM THE FILL FACE TO THE BACK FACE AT THE RATE OF 2%.
- THE CONTRACTOR SHALL PROVIDE FOR INSTALLATION OF THE 102mm DIAMETER DRAIN PIPE THROUGH THE WING WALL AS REQUIRED FOR REINFORCED BRIDGE APPROACH FILLS; SEE THE ROADWAY PLANS. REINFORCING STEEL IN THE WING WALL MAY BE SHIFTED AS NECESSARY TO CLEAR THE DRAIN PIPE.
- THE CONTRACTOR SHALL PROVIDE FOR THE INSTALLATION OF THE 250mm Ø BLOCKOUT. STEEL IN THE BACKWALL MAY BE SHIFTED OR CUT AS NECESSARY TO PROVIDE FOR THE INSTALLATION OF THE BLOCKOUT. SEE UTILITY SHEETS FOR DETAILS.



PLAN



ELEVATION



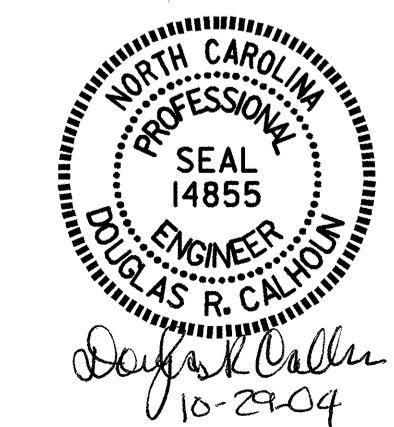
DETAIL A
(TYP. ALL GDRS.)

PROJECT NO. B-2583
MADISON COUNTY
 STATION: 11+03.000 -Y1-

SHEET 1 OF 3

STATE OF NORTH CAROLINA
 DEPARTMENT OF TRANSPORTATION
 RALEIGH

SUBSTRUCTURE END BENT 1



REVISIONS				SHEET NO.	
NO.	BY:	DATE:	NO.	BY:	DATE:
1			3		
2			4		

TOTAL SHEETS: 112

DRAWN BY: A. K. P. / E. G. A. DATE: 5-24-04
 CHECKED BY: A. L. MEADOWS DATE: 6/8/04

* FOR LOCATION OF ELEVATION BETWEEN BRIDGE SEAT BUILD-UPS, SEE SECTION A-A, SHEET 3 OF 3.