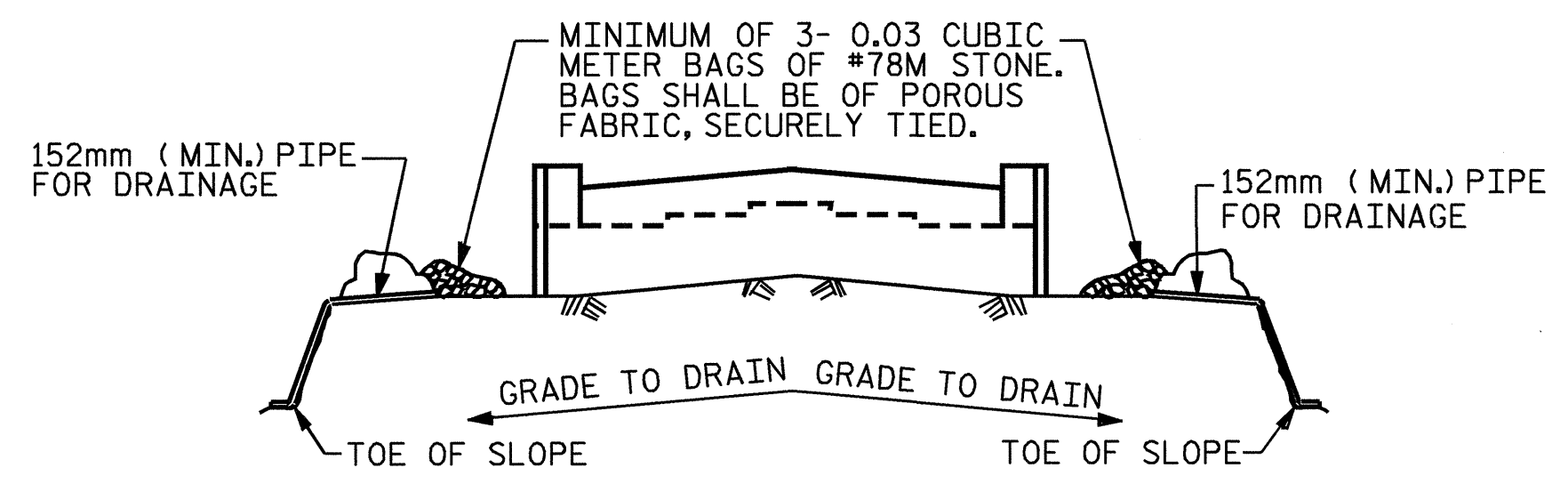


SECTION A-A



BAGGED STONE AND PIPE SHALL BE PLACED IMMEDIATELY AFTER COMPLETION OF END BENT EXCAVATION. PIPE MAY BE EITHER CONCRETE, CORRUGATED STEEL, CORRUGATED ALUMINUM ALLOY, OR CORRUGATED PLASTIC. PERFORATED PIPE WILL NOT BE ALLOWED.

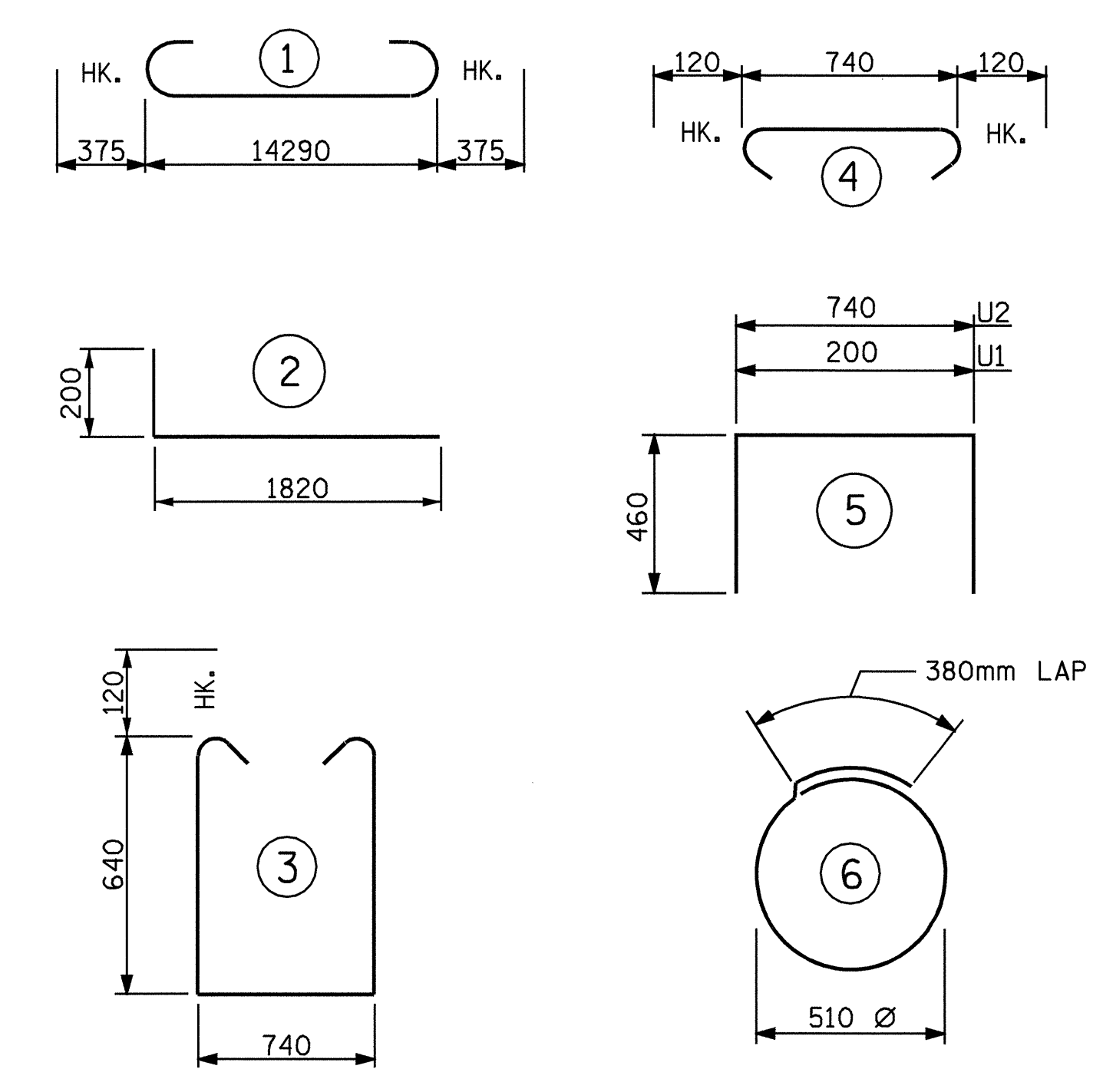
BAGGED STONE SHALL REMAIN IN PLACE UNTIL THE ENGINEER DIRECTS THAT IT BE REMOVED. THE CONTRACTOR SHALL REMOVE AND DISPOSE OF SILT ACCUMULATIONS AT BAGGED STONE WHEN SO DIRECTED BY THE ENGINEER. BAGS SHALL BE REMOVED AND REPLACED WHENEVER THE ENGINEER DETERMINES THAT THEY HAVE DETERIORATED AND LOST THEIR EFFECTIVENESS.

NO SEPARATE PAYMENT WILL BE MADE FOR THIS WORK AND THE ENTIRE COST OF THIS WORK SHALL BE INCLUDED IN THE UNIT CONTRACT PRICE FOR THE SEVERAL PAY ITEMS.

TEMPORARY DRAINAGE AT END BENT

DRAWN BY : A. K. P. & E. G. A. DATE : 5/24/04
CHECKED BY : A. L. MEADOWS DATE : 6/8/04

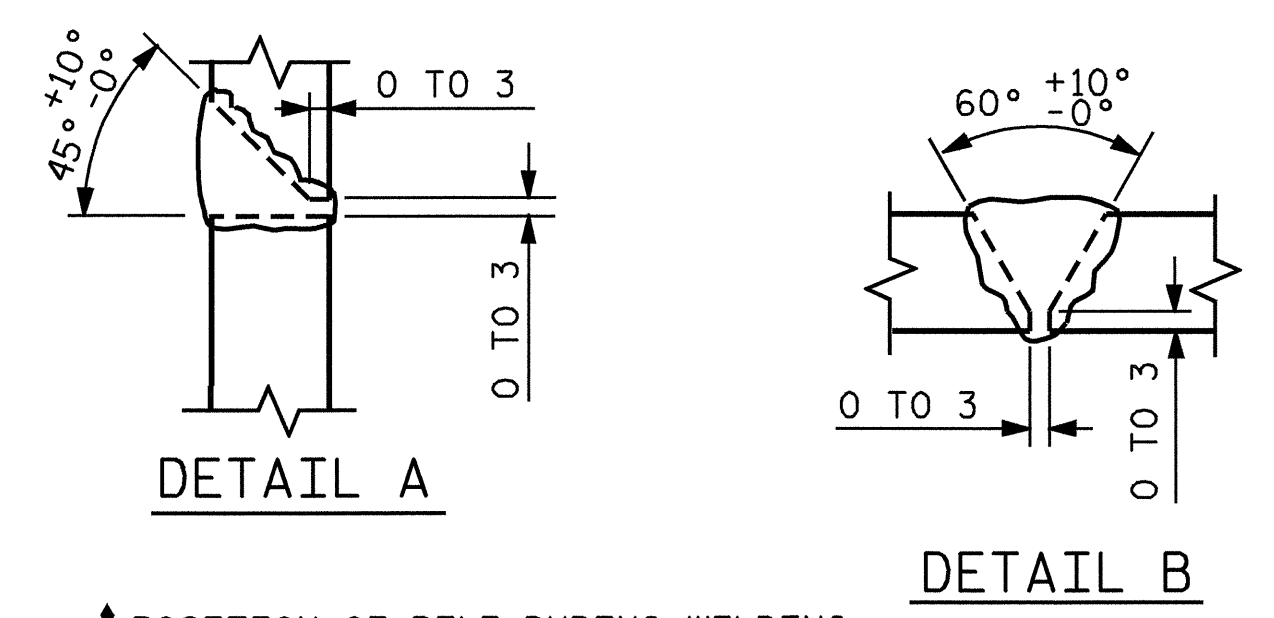
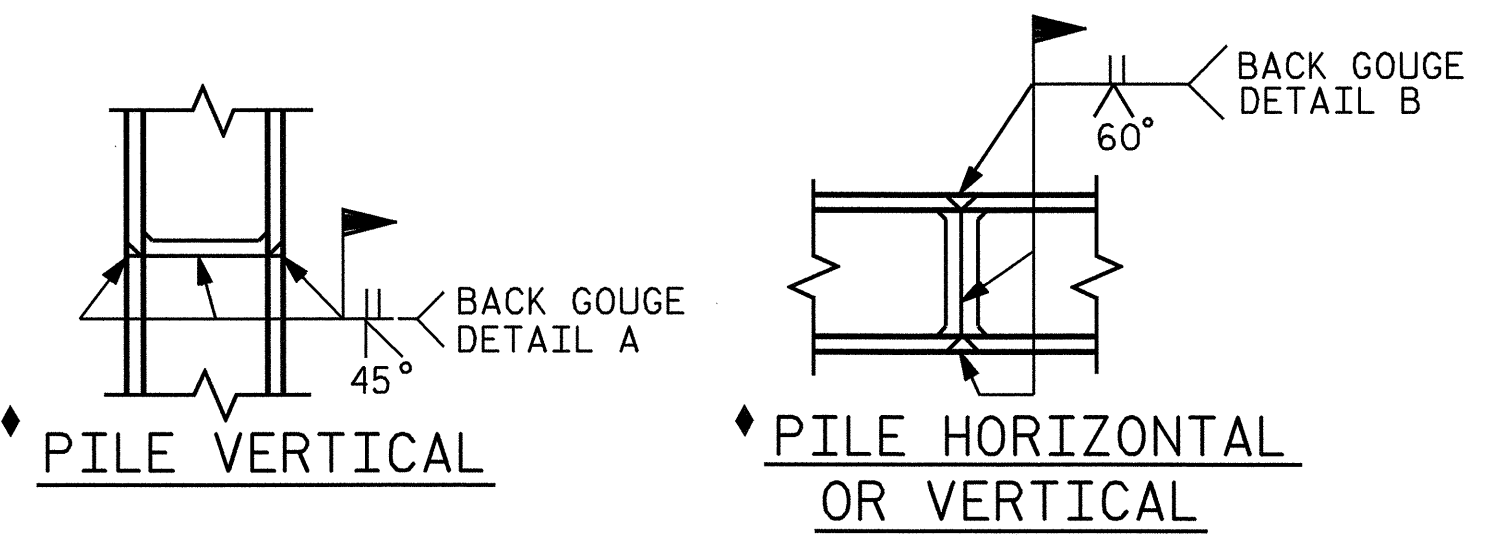
BAR TYPES



ALL BAR DIMENSIONS ARE OUT TO OUT.

BILL OF MATERIAL

END BENT 1					
BAR	NO.	SIZE	TYPE	LENGTH	WEIGHT
B1	8	29	1	15040	609
B2	2	16	STR	14320	44
B3	8	13	STR	7540	60
B4	12	13	STR	740	9
B5	8	13	STR	900	7
H1	40	13	2	2020	80
K1	20	13	STR	7540	150
K2	8	13	STR	880	7
S1	48	13	3	2260	109
S2	48	13	4	980	47
S3	16	13	6	1980	31
U1	42	13	5	1120	47
U2	6	13	5	1660	10
V1	84	16	STR	1780	232
V2	44	13	STR	2080	91
TOTAL REINFORCING STEEL					Kg. 1533
CLASS A CONCRETE BREAKDOWN					
POUR 1 CAP & LOWER					
PART OF WINGS					10.5 m ³
POUR 2 BACKWALL & UPPER					
PART OF WINGS					6.7 m ³
TOTAL CLASS A CONCRETE					17.2 m ³
HP 310 x 79 STEEL PILES					
No. 8 40 METERS					



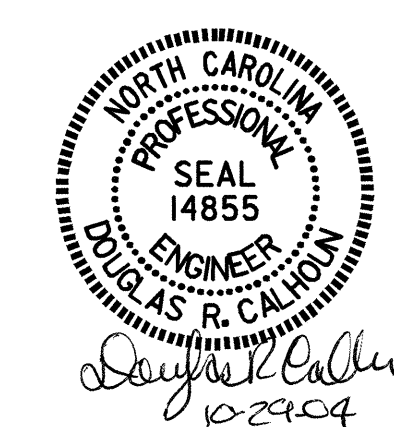
PILE SPLICE DETAILS

PROJECT NO. B-2583
MADISON COUNTY
STATION: 11+03.000 -Y1-

SHEET 3 OF 3

STATE OF NORTH CAROLINA
DEPARTMENT OF TRANSPORTATION
RALEIGH

**SUBSTRUCTURE
END BENT 1**



REVISIONS						SHEET NO.
NO.	BY:	DATE:	NO.	BY:	DATE:	S-96
1			3			TOTAL SHEETS 112
2			4			