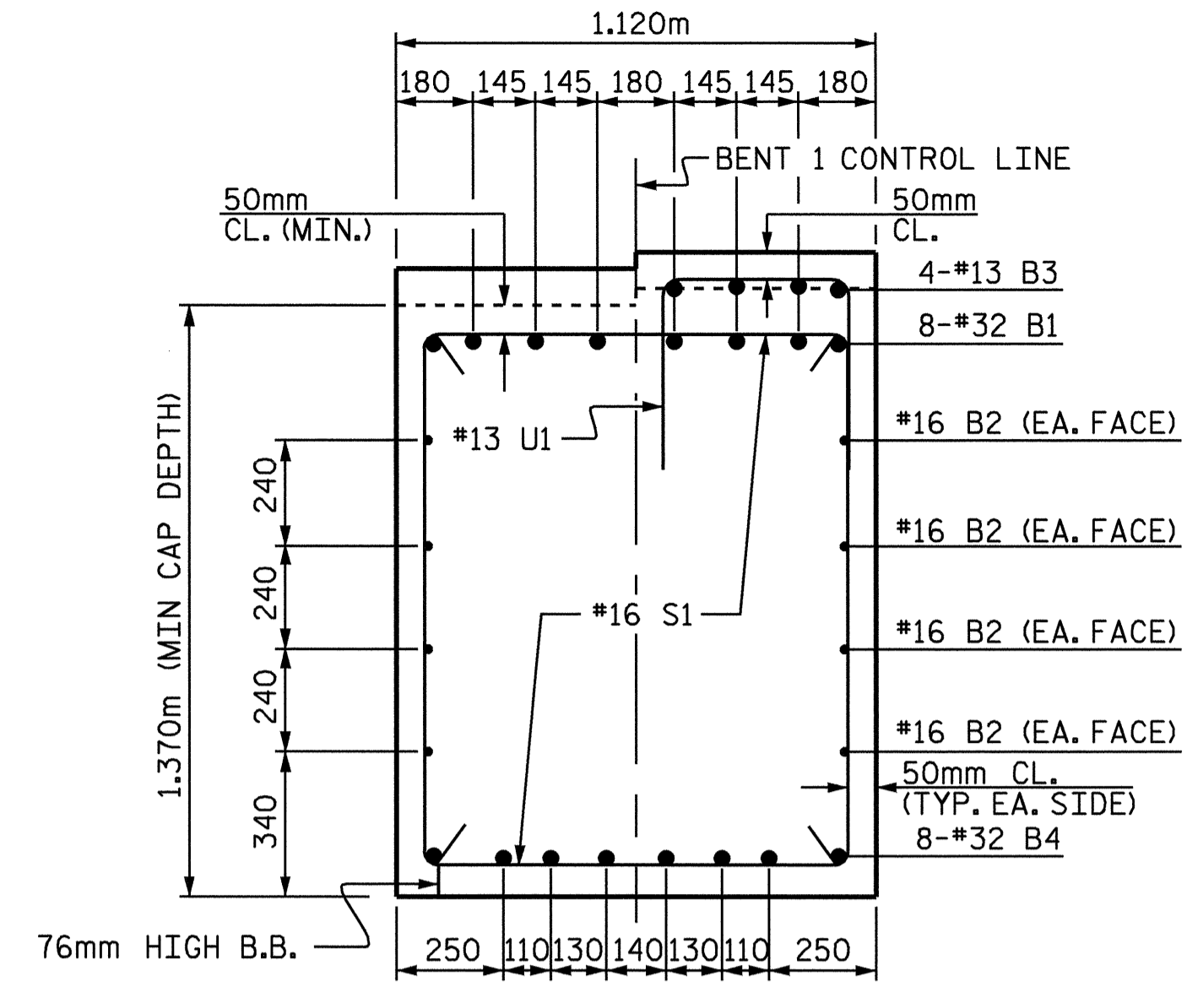
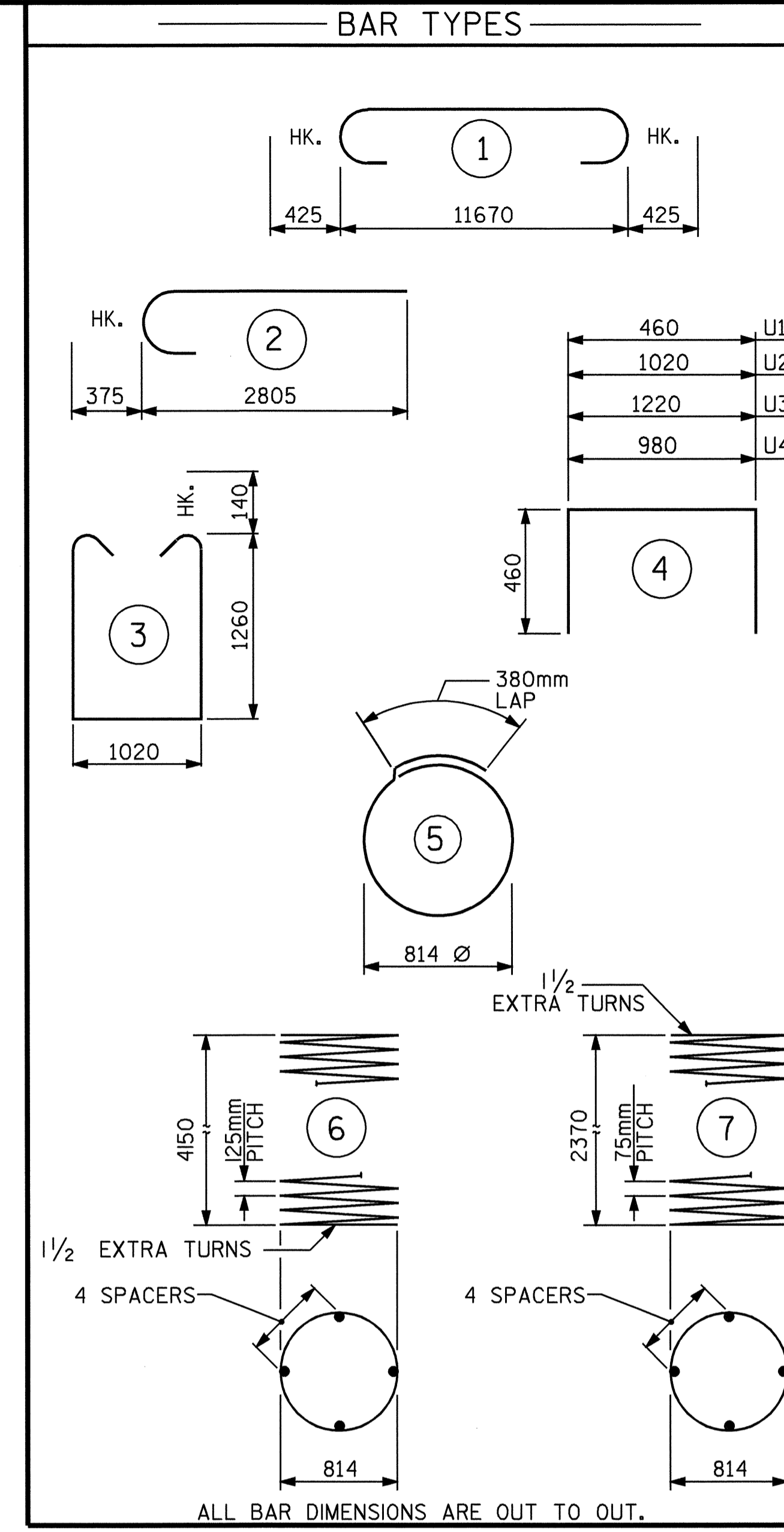


**END VIEW OF CAP**  
(BOTH ENDS TYPICAL)

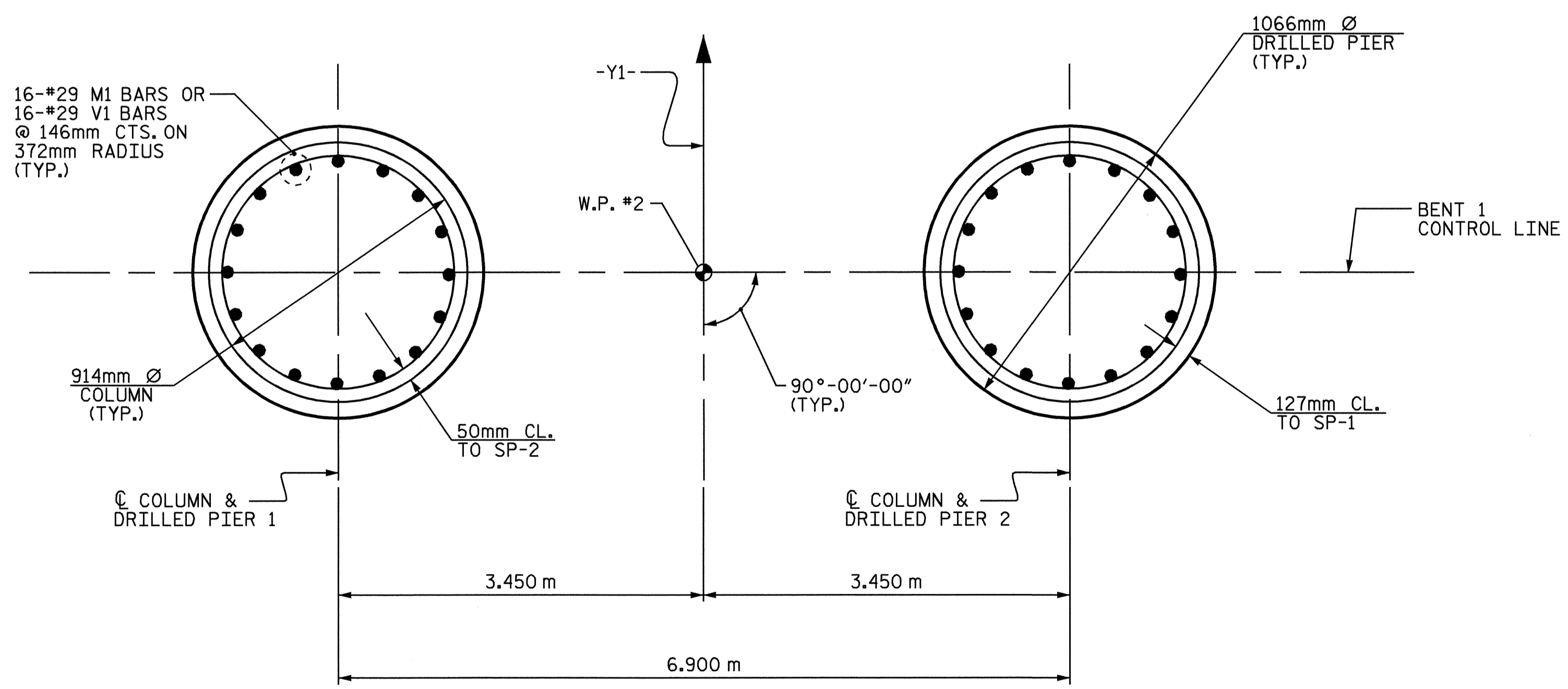


**SECTION A-A**



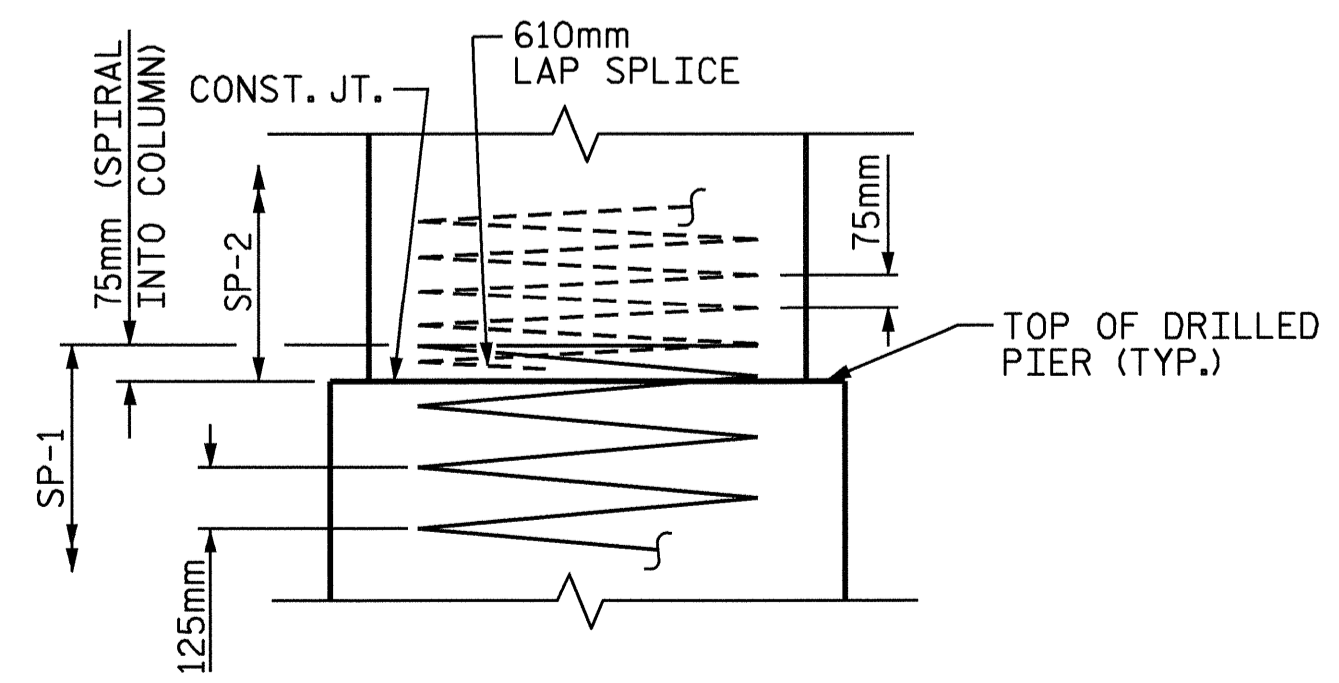
ALL BAR DIMENSIONS ARE OUT TO OUT.  
 \*\* THE SP-1 SPIRAL REINFORCING STEEL SHALL BE W31 OR D-31 COLD DRAWN WIRE OR #16 PLAIN OR DEFORMED BAR.  
 \*\*\* THE SP-2 SPIRAL REINFORCING STEEL SHALL BE W20 OR D-20 COLD DRAWN WIRE OR #13 PLAIN OR DEFORMED BAR.

BILL OF MATERIAL					
BENT 1					
BAR	NO.	SIZE	TYPE	LENGTH	WEIGHT
B1	8	32	1	12520	641
B2	8	16	STR	11700	145
B3	4	13	STR	3020	12
B4	8	32	STR	11700	599
M1	32	29	STR	6880	1114
S1	43	16	3	3820	255
S2	10	13	5	2940	29
U1	8	13	4	1380	11
U2	30	13	4	1940	58
U3	6	13	4	2140	13
U4	8	13	4	1900	15
V1	32	29	2	3180	515
REINFORCING STEEL					3397 kg
SP-1	2	**	6	86900	270
SP-2	2	***	7	83380	166
SPIRAL COLUMN REINFORCING STEEL					436 kg
CLASS A CONCRETE BREAKDOWN					
POUR 2 (COLUMNS)					3.0m <sup>3</sup>
POUR 3 (CAP)					18.9m <sup>3</sup>
TOTAL CLASS A CONCRETE					21.9m <sup>3</sup>
1066mm Ø DRILLED PIERS					
DRILLED PIER CONCRETE POUR 1 (DRILLED PIERS)					7.7m <sup>3</sup>
1066mm Ø DRILLED PIERS IN SOIL :					1.1m
1066mm Ø DRILLED PIERS NOT IN SOIL :					7.5m
PERMANENT STEEL CASING FOR 1066mm Ø DRILLED PIER:					5.0m
CROSSHOLE SONIC LOGGING:					1 PER BENT
CSL TUBES :					40.4m

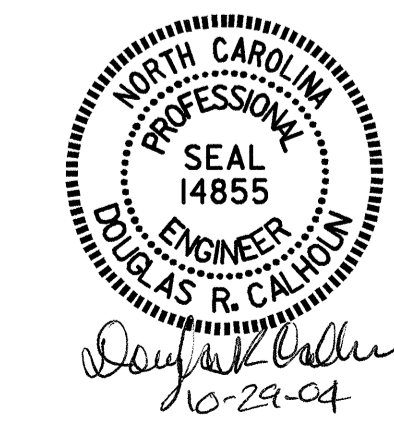


**PLAN OF COLUMN AND DRILLED PIERS**

REINFORCING STEEL AND DIMENSIONS ARE TYPICAL FOR ALL COLUMNS AND DRILLED PIERS.



**CONSTRUCTION JOINT DETAIL**



PROJECT NO. B-2583  
 MADISON COUNTY  
 STATION: 11+03.00 -Y1-  
 SHEET 2 OF 2

STATE OF NORTH CAROLINA DEPARTMENT OF TRANSPORTATION RALEIGH					
SUBSTRUCTURE BENT 1					
REVISIONS					SHEET NO.
NO.	BY:	DATE:	NO.	BY:	DATE:
1			3		
2			4		
					98
					TOTAL SHEETS 112

DRAWN BY : A.L.MEADOWS DATE : 3/12/04  
 CHECKED BY : W.S.ARAFAT DATE : 5/27/04