

NOTES

THE GUARDRAIL ANCHOR ASSEMBLY SHALL CONSIST OF A 6mm HOLD DOWN PLATE AND 7 - 22.23mm Ø BOLTS WITH NUTS AND WASHERS.

THE HOLD-DOWN PLATE SHALL CONFORM TO AASHTO M270 GRADE 250. AFTER FABRICATION, THE HOLD-DOWN PLATE SHALL BE HOT-DIP GALVANIZED IN ACCORDANCE WITH AASHTO M111.

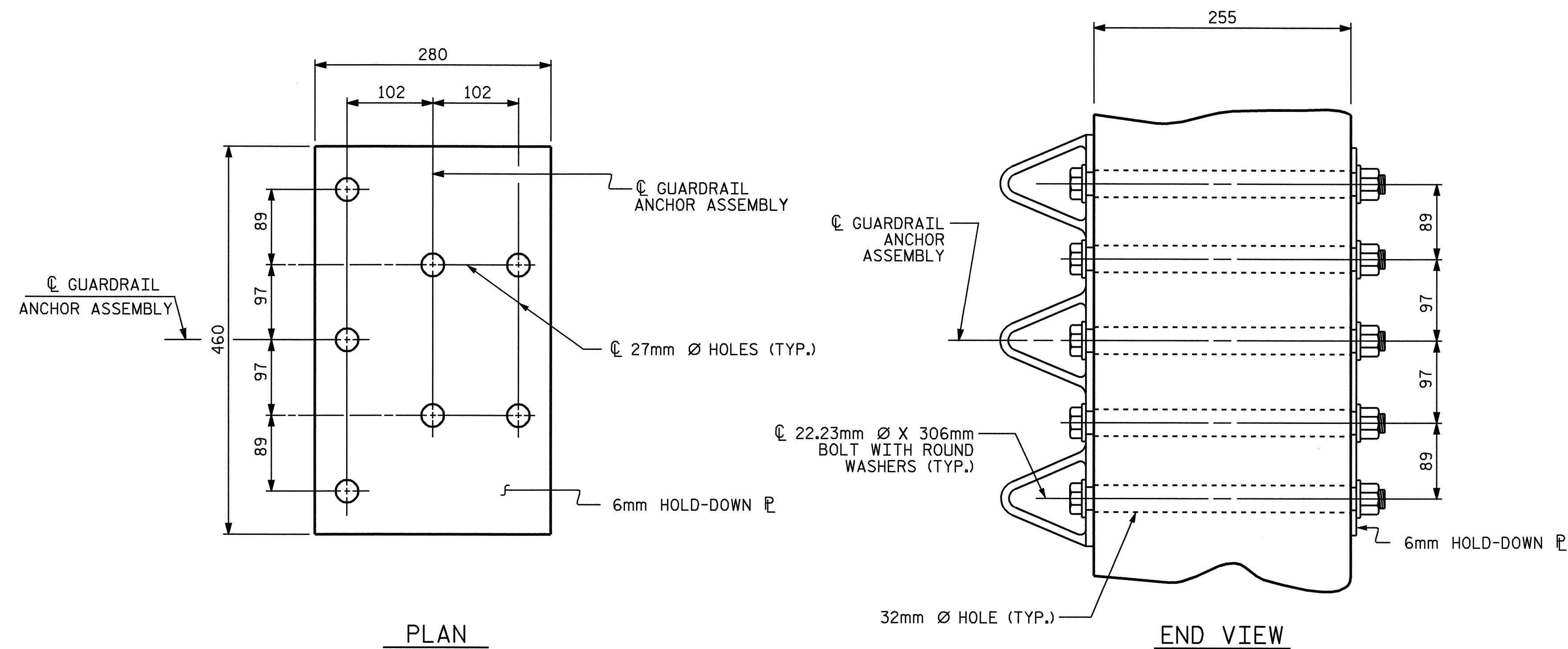
BOLTS SHALL CONFORM TO THE REQUIREMENTS OF ASTM A307 AND NUTS SHALL CONFORM TO THE REQUIREMENTS OF AASHTO M291M. BOLTS, NUTS AND WASHERS SHALL BE GALVANIZED. AT THE CONTRACTOR'S OPTION, STAINLESS STEEL BOLTS, NUTS AND WASHERS MAY BE USED AS AN ALTERNATE FOR THE 22.23mm Ø GALVANIZED BOLTS, NUTS AND WASHERS. THEY SHALL CONFORM TO OR EXCEED THE MECHANICAL REQUIREMENTS OF ASTM A307. THE USE OF THIS ALTERNATE SHALL BE APPROVED BY THE ENGINEER.

AFTER INSTALLATION, THE EXPOSED THREAD OF THE BOLT SHALL BE BURRED WITH A SHARP POINTED TOOL.

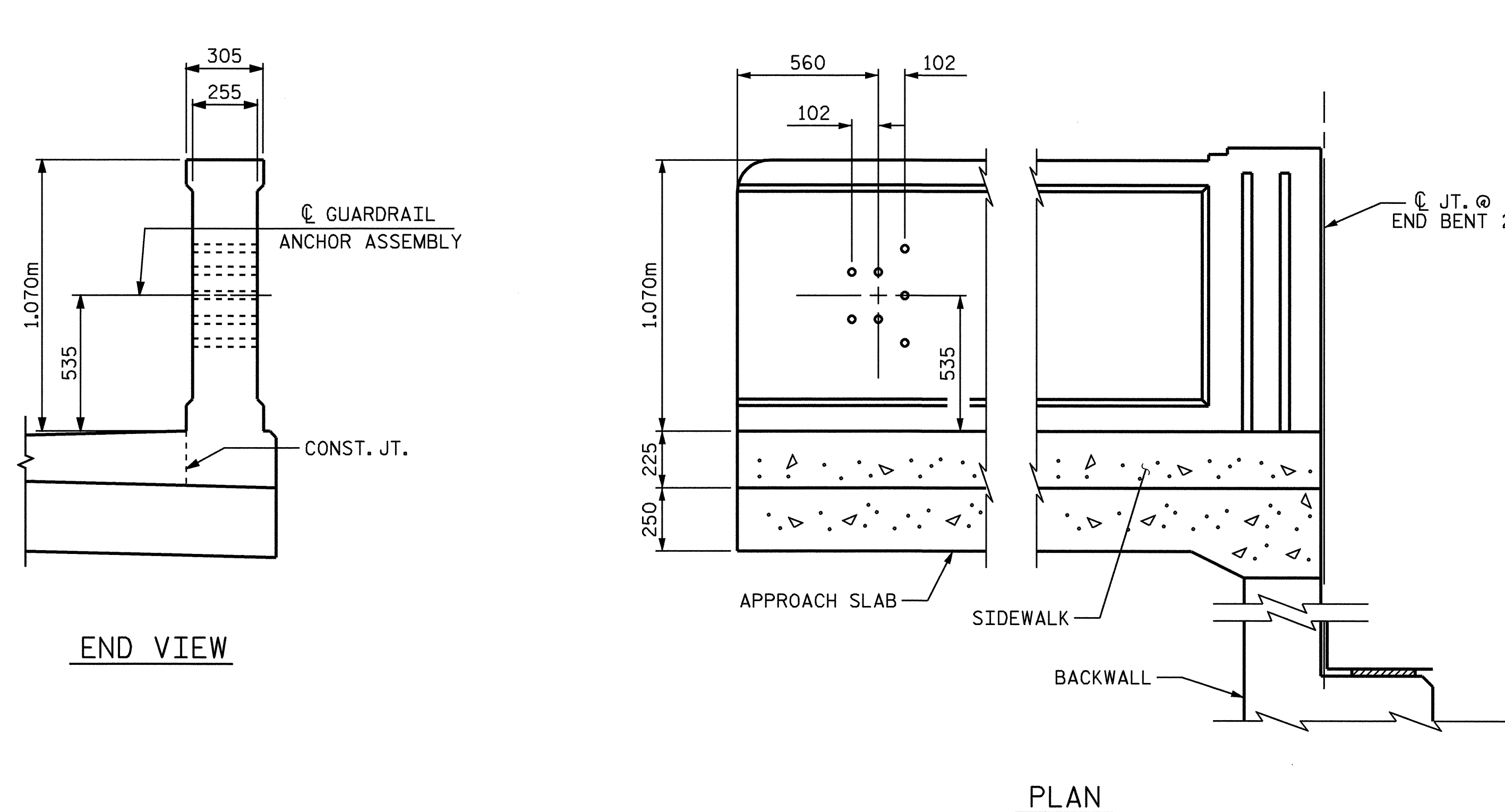
THE COST OF THE GUARDRAIL ANCHOR ASSEMBLIES WITH BOLTS, NUTS AND WASHERS COMPLETE IN PLACE, SHALL BE INCLUDED IN THE VARIOUS PAY ITEMS.

THE VERTICAL REINFORCING BARS MAY BE SHIFTED SLIGHTLY IN THE END POST TO CLEAR ASSEMBLY BOLTS.

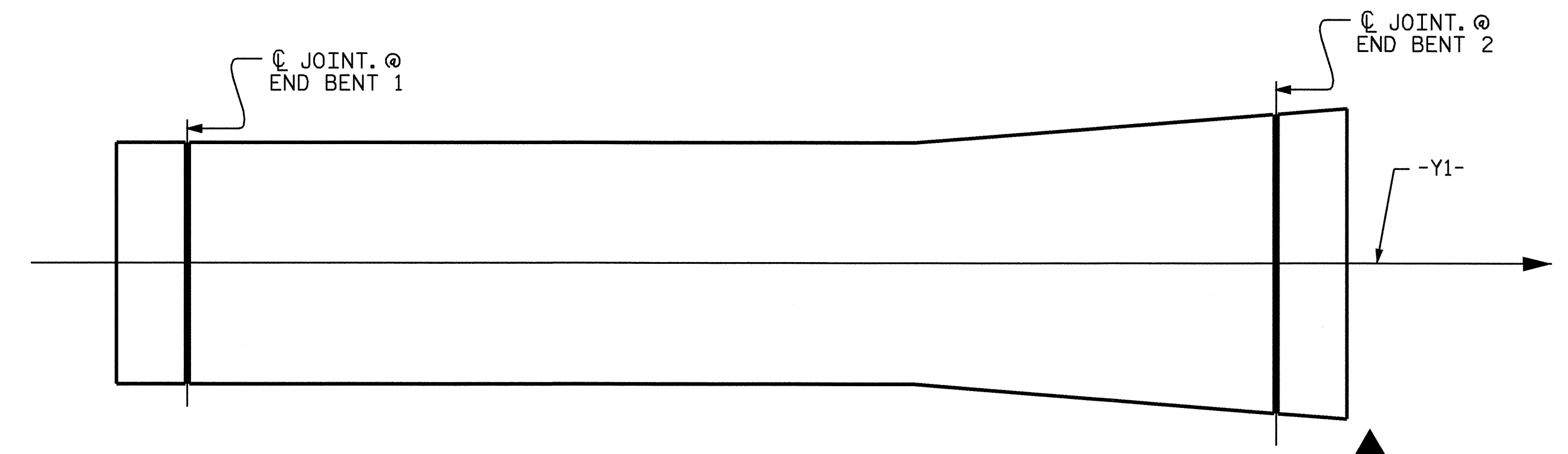
THE 32mm Ø HOLES SHALL BE FORMED OR DRILLED WITH A CORE BIT. IMPACT TOOLS WILL NOT BE PERMITTED. ANY CONCRETE DAMAGED BY THIS WORK SHALL BE REPAIRED TO THE SATISFACTION OF THE ENGINEER.



GUARDRAIL ANCHOR ASSEMBLY DETAILS



LOCATION OF GUARDRAIL ANCHOR AT END POST

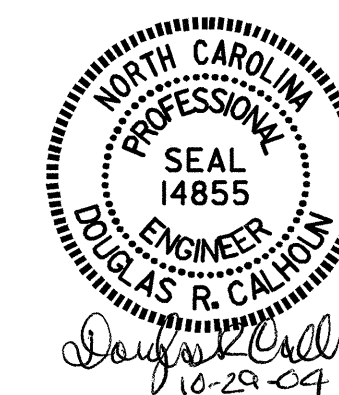


SKETCH SHOWING POINTS OF ATTACHMENTS

▲ DENOTES GUARDRAIL ANCHORAGE REQUIRED.

PROJECT NO. B-2583
MADISON COUNTY
 STATION: 11+03.000 -Y1-

SHEET 4 OF 4



STATE OF NORTH CAROLINA
 DEPARTMENT OF TRANSPORTATION
 RALEIGH
 STANDARD
 GUARDRAIL ANCHORAGE
 DETAILS FOR
 CLASSIC CONCRETE
 BRIDGE RAIL

| REVISIONS | | | | | | SHEET NO. | |
|-----------|-----|-------|-----|-----|-------|------------------|--|
| NO. | BY: | DATE: | NO. | BY: | DATE: | S-109 | |
| 1 | | | 3 | | | TOTAL SHEETS 112 | |
| 2 | | | 4 | | | | |

| | |
|----------------------------|-----------------------|
| ASSEMBLED BY : T.A. HARRIS | DATE : 6/22/04 |
| CHECKED BY : W.S. ARAFAT | DATE : 7/9/04 |
| DRAWN BY : EEM 6/94 | REV. 8/16/99 RWW/LES |
| CHECKED BY : RGW 6/94 | REV. 10/17/00 RWW/LES |
| | REV. 5/7/03 RWW/JTE |