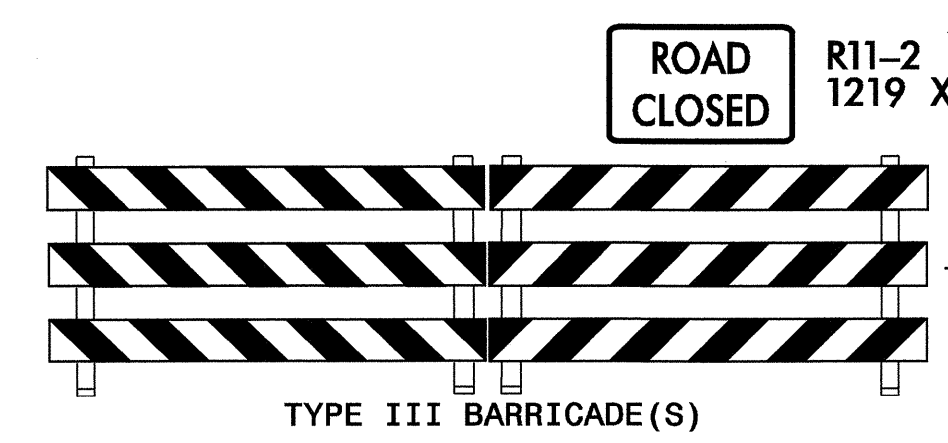
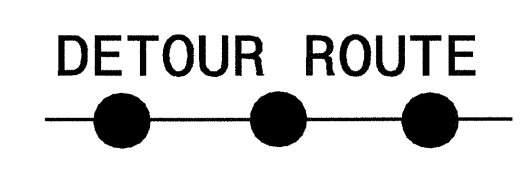


FOR OFFSITE DETOUR SIGNING AND TRAFFIC CONTROL DEVICES AT THE INTERSECTION OF NC 16 AND NC 273, SEE TCP-9.

NC 16 (SOUTHBOUND LANES) CLOSED TO TRAFFIC



APPROVED:	DATE: 9/1/04	PHASE III OFFSITE DETOUR AND SIGNING	
SCALE: NONE	DATE: 09/01/04		REVISIONS
DWG. BY: SBC	DESIGN BY: SBC		
REVIEWED BY: CLM			

24-SEP-2004 08:47
 J:\TCP\R2206AA-TC\Tcpl0.dgn
 SCOOT5 AT TETC206428