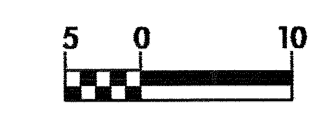


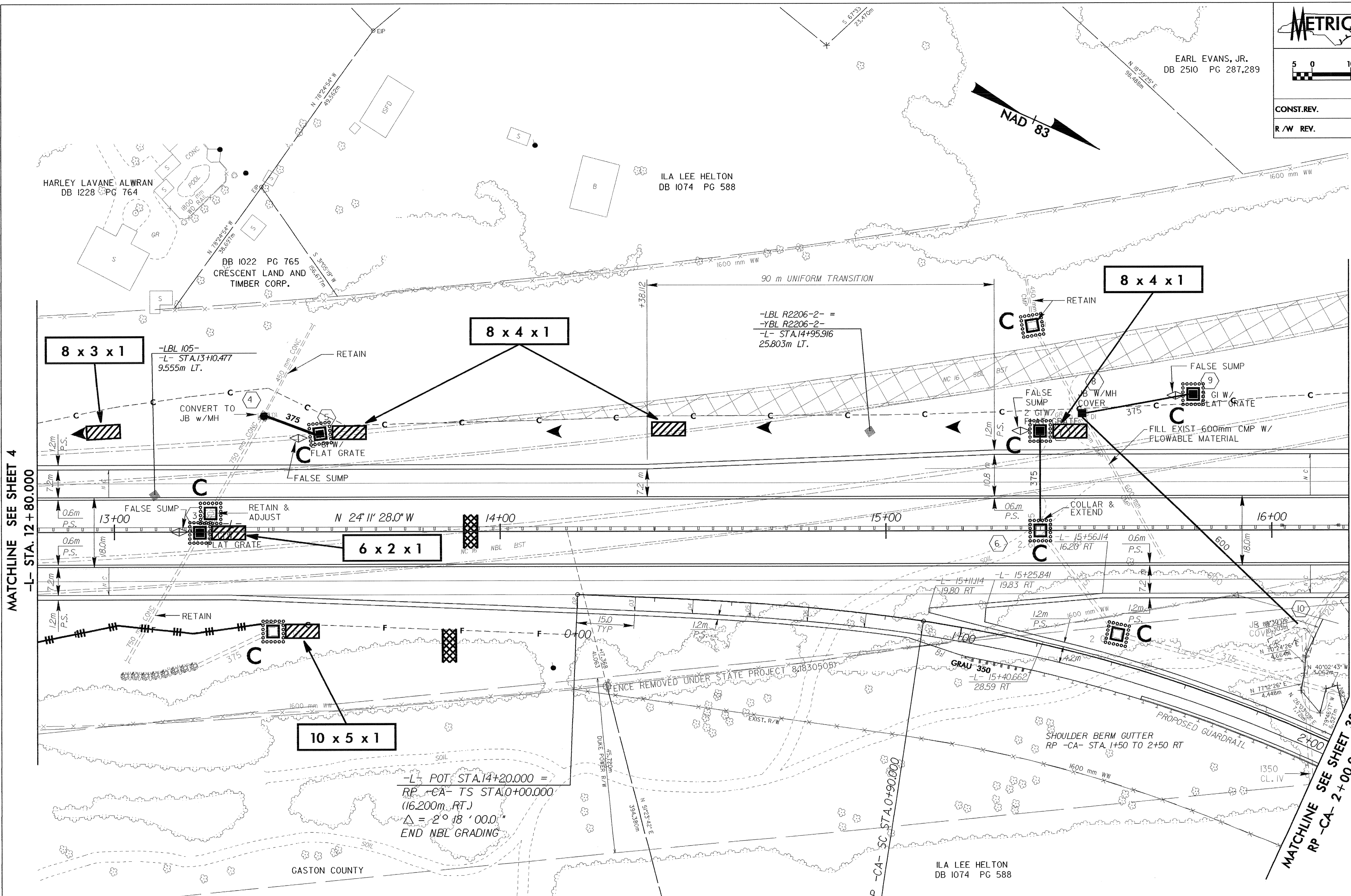


PROJECT REFERENCE NO.	SHEET NO.
R-2206AA	EC-9/CONST.5
R-2206A SHEET NO.	5
ROADWAY DESIGN ENGINEER	HYDRAULICS ENGINEER
CONST.REV.	
R/W REV.	



EARL EVANS, JR.
DB 2510 PG 287.289

NAD '83



MATCHLINE SEE SHEET 4
-L- STA. 12 + 80.000

MATCHLINE SEE SHEET 6
-L- STA. 16 + 20.000

MATCHLINE SEE SHEET 30
RP -CA- STA. 2 + 00.000

-L- POT. STA. 14 + 20.000 =
RP -CA- TS STA. 0 + 00.000
(16.200m RT.)
 $\Delta = 2^\circ 18' 00.0''$
END NBL GRADING

RAMP -CA-

PIs Sta 0+60.040	PI Sta 1+64.136	PIs Sta 2+66.644
$\theta_s = 6^\circ 26' 44.8''$	$\Delta = 2^\circ 00' 00.0''$ (RT)	$\theta_s = 6^\circ 26' 44.8''$
$L_s = 90.000$	$L = 146.608$	$L_s = 90.000$
$LT = 60.040$	$T = 74.136$	$LT = 60.040$
$ST = 30.036$	$R = 400.000$	$ST = 30.036$
	$SE = 0.08$	
	$RO = 90.000$	

SEE SHEET 35 FOR -L- PROFILE
SEE SHEET 52 FOR RP -CA- PROFILE