
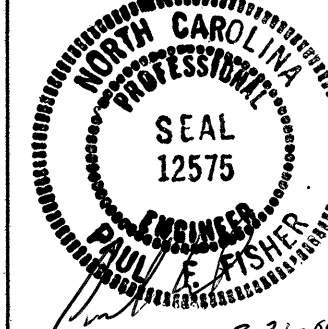


8/17/99

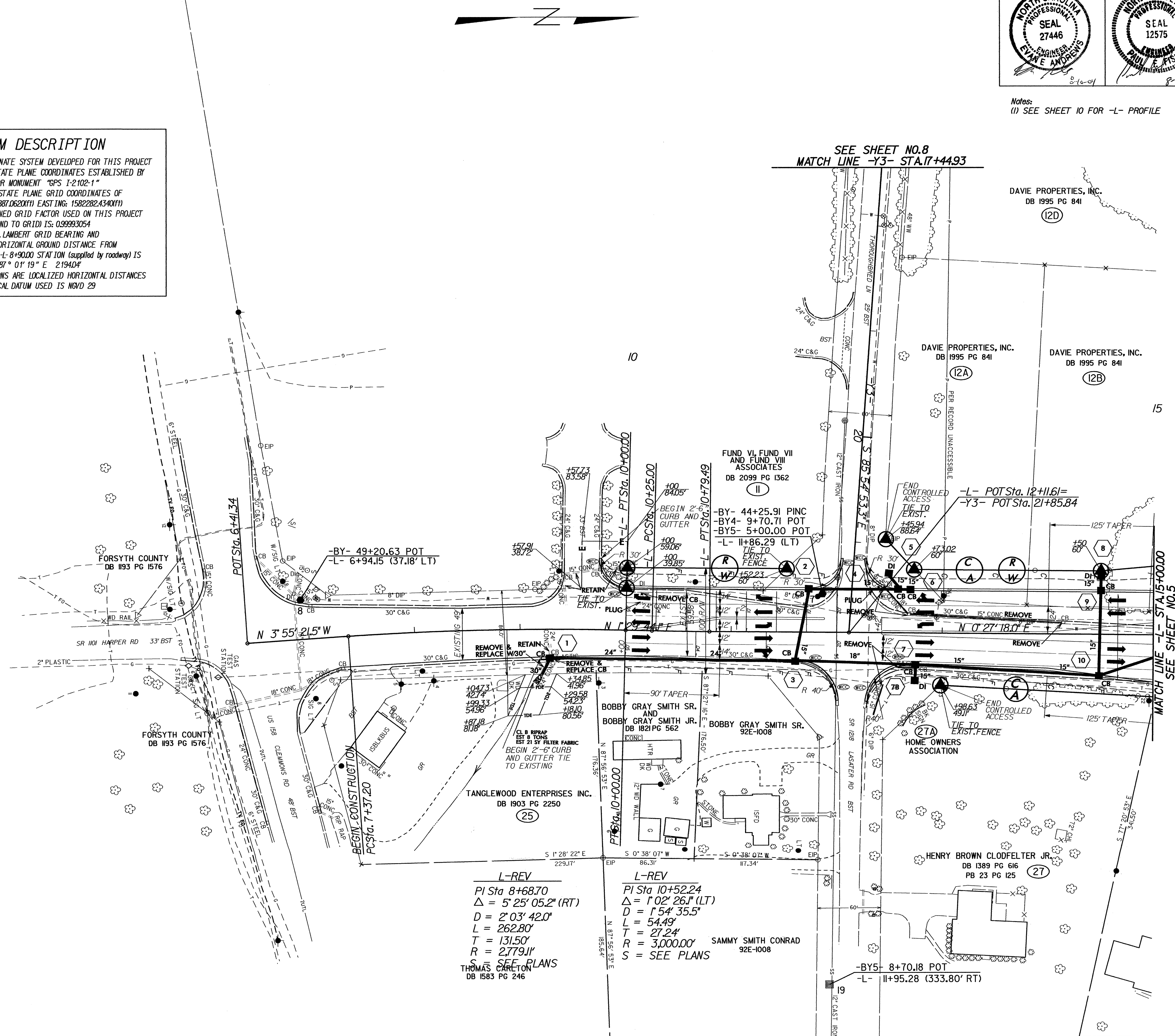
REVISIONS

10-AUG-2004 10:35  
R:\p04\REV.psh  
E:\caudill

PROJECT REFERENCE NO. 1-2102	SHEET NO. 4
RAW SHEET NO. 4	
ROADWAY DESIGN ENGINEER 	HYDRAULICS ENGINEER 

Notes:  
(1) SEE SHEET 10 FOR -L- PROFILE

**DATUM DESCRIPTION**  
 THE LOCALIZED COORDINATE SYSTEM DEVELOPED FOR THIS PROJECT IS BASED ON THE STATE PLANE COORDINATES ESTABLISHED BY NCOS FOR MONUMENT "GPS 1-2102-1" WITH NAD 83 STATE PLANE GRID COORDINATES OF NORTHING: 828887.062000(E) EASTING: 1582282.434000(E) THE AVERAGE COMBINED GRID FACTOR USED ON THIS PROJECT (GROUND TO GRID) IS: 0.99993054 THE N.C. LAMBERT GRID BEARING AND LOCALIZED HORIZONTAL GROUND DISTANCE FROM "GPS 1-2102-1" TO -L- 8+90.00 STATION (supplied by roadway) IS N 81° 01' 19" E 2194.04' ALL LINEAR DIMENSIONS ARE LOCALIZED HORIZONTAL DISTANCES VERTICAL DATUM USED IS NAVD 29



**L-REV**  
 PI Sta 8+68.70  
 $\Delta = 5' 25' 05.2" (RT)$   
 $D = 2' 03' 42.0"$   
 $L = 262.80'$   
 $T = 131.50'$   
 $R = 2,779.11'$   
 SEE PLANS  
 THOMAS CARLTON  
 DB 1583 PG 246

**L-REV**  
 PI Sta 10+52.24  
 $\Delta = 1' 02' 26.1" (LT)$   
 $D = 1' 54' 35.5"$   
 $L = 54.49'$   
 $T = 27.24'$   
 $R = 3,000.00'$   
 S = SEE PLANS  
 SAMMY SMITH CONRAD  
 92E-1008

-BY5- 8+70.18 POT  
 -L- 11+95.28 (333.80' RT)

MATCH LINE -L- STA. 15+00.00  
SEE SHEET NO. 5

SEE SHEET NO. 8  
MATCH LINE -Y3- STA. 17+44.93