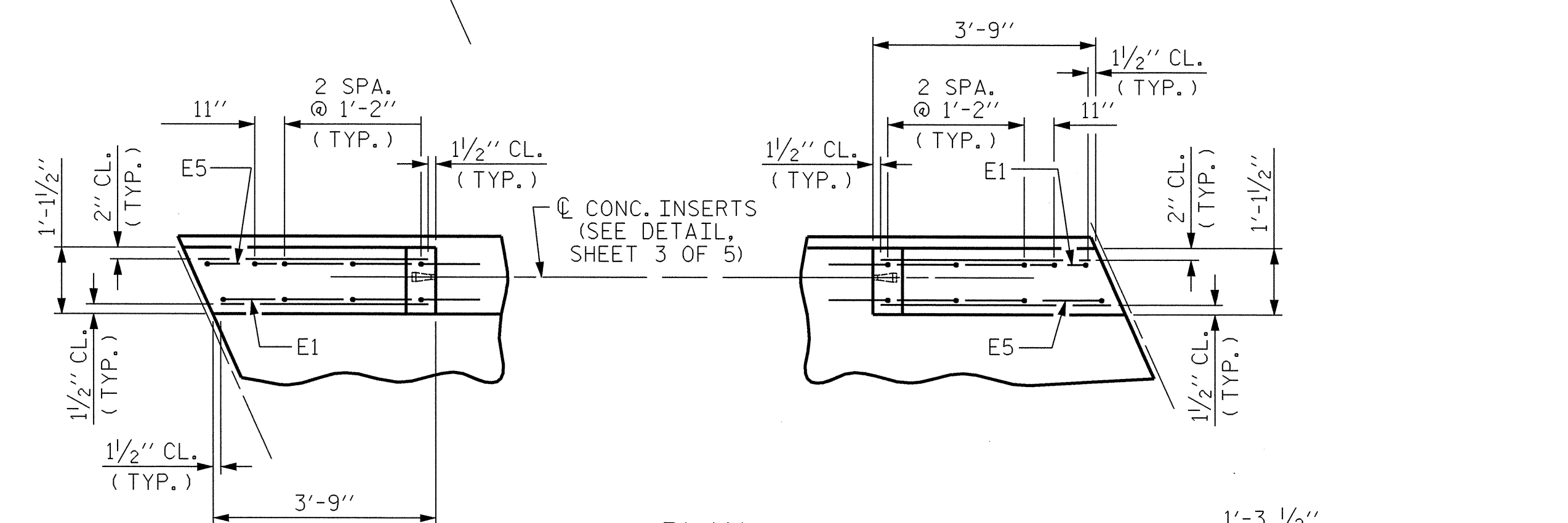
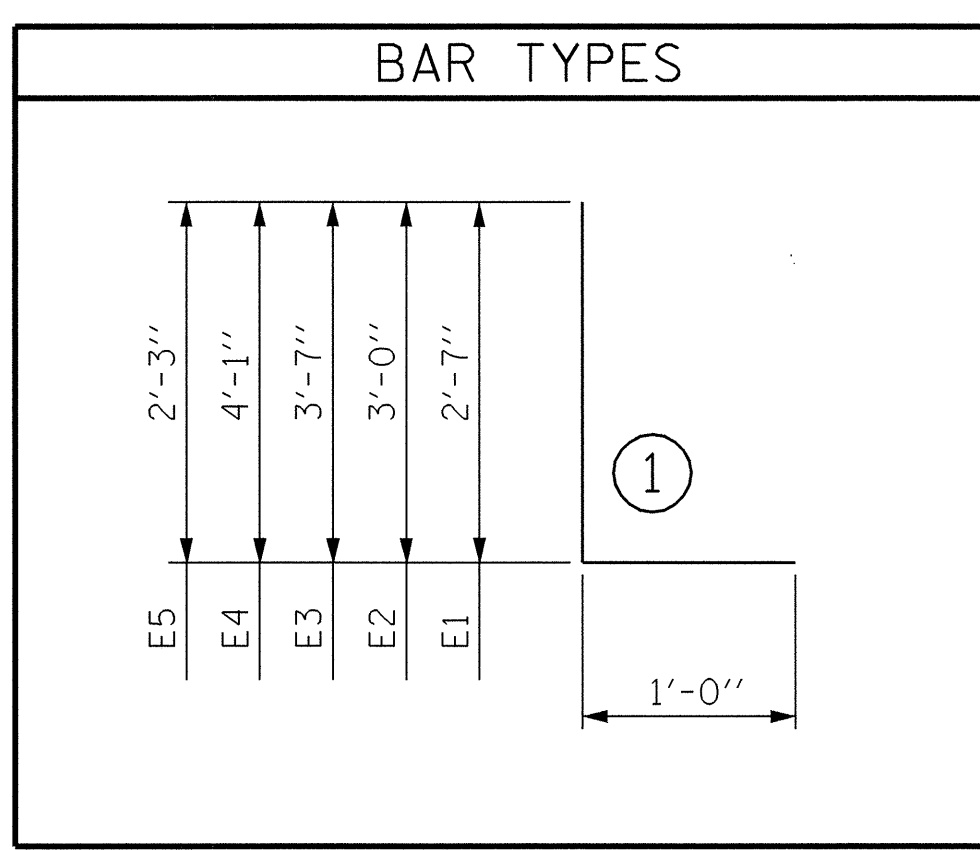


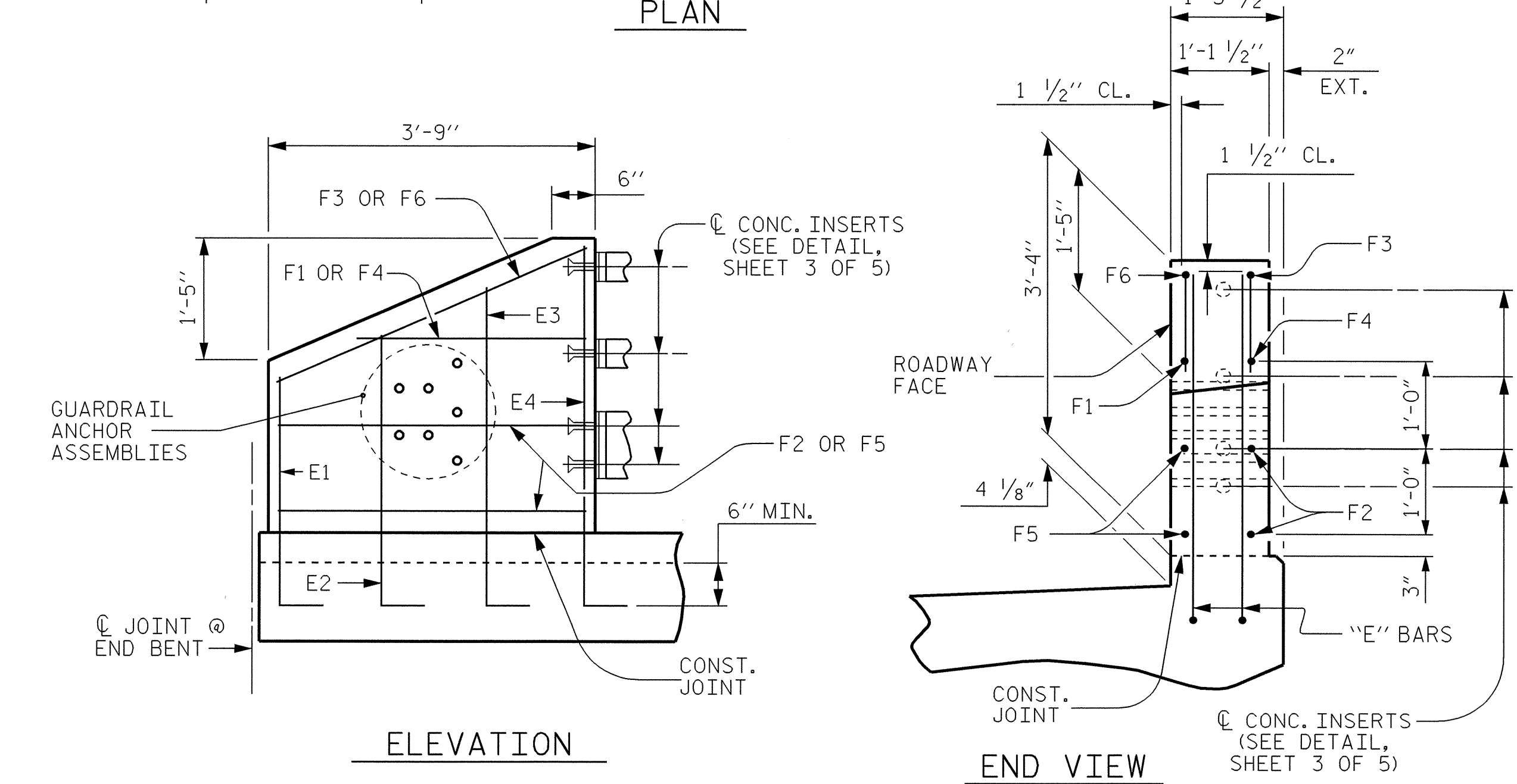
PLAN OF RAIL POST SPACING



PLAN



BILL OF MATERIAL FOR TWO END POSTS					
BAR	NO.	SIZE	TYPE	LENGTH	WEIGHT
*E1	2	#7	1	3'-7"	15
*E2	4	#7	1	4'-0"	33
*E3	4	#7	1	4'-7"	37
*E4	4	#7	1	5'-1"	42
*E5	2	#7	1	3'-3"	13
*F1	4	#6	STR	3'-3"	20
*F2	4	#6	STR	3'-5"	21
*F3	2	#6	STR	3'-9"	11
*F4	2	#6	STR	2'-5"	7
*F5	4	#6	STR	4'-2"	25
*F6	2	#6	STR	4'-7"	14
* EPOXY COATED REINF. STEEL = 238 LBS					
CLASS "AA" CONCRETE					1.0 C.Y.
* THESE BARS ARE EPOXY COATED					



ELEVATION

END VIEW

END POST DETAILS

DRAWN BY: J.P. ADAMS DATE: 8/1/03  
CHECKED BY: S.H. SOCKWELL DATE: 10/2/03



PROJECT NO. I-2102  
FORSYTH COUNTY  
STATION: 20+71.54 -L-  
SHEET 4 OF 5

STATE OF NORTH CAROLINA  
DEPARTMENT OF TRANSPORTATION  
RALEIGH

RAIL POST SPACINGS  
AND  
END OF RAIL DETAILS  
FOR THREE BAR METAL RAILS

REVISIONS						SHEET NO.
NO.	BY:	DATE:	NO.	BY:	DATE:	S-23
1			3			TOTAL SHEETS
2			4			51