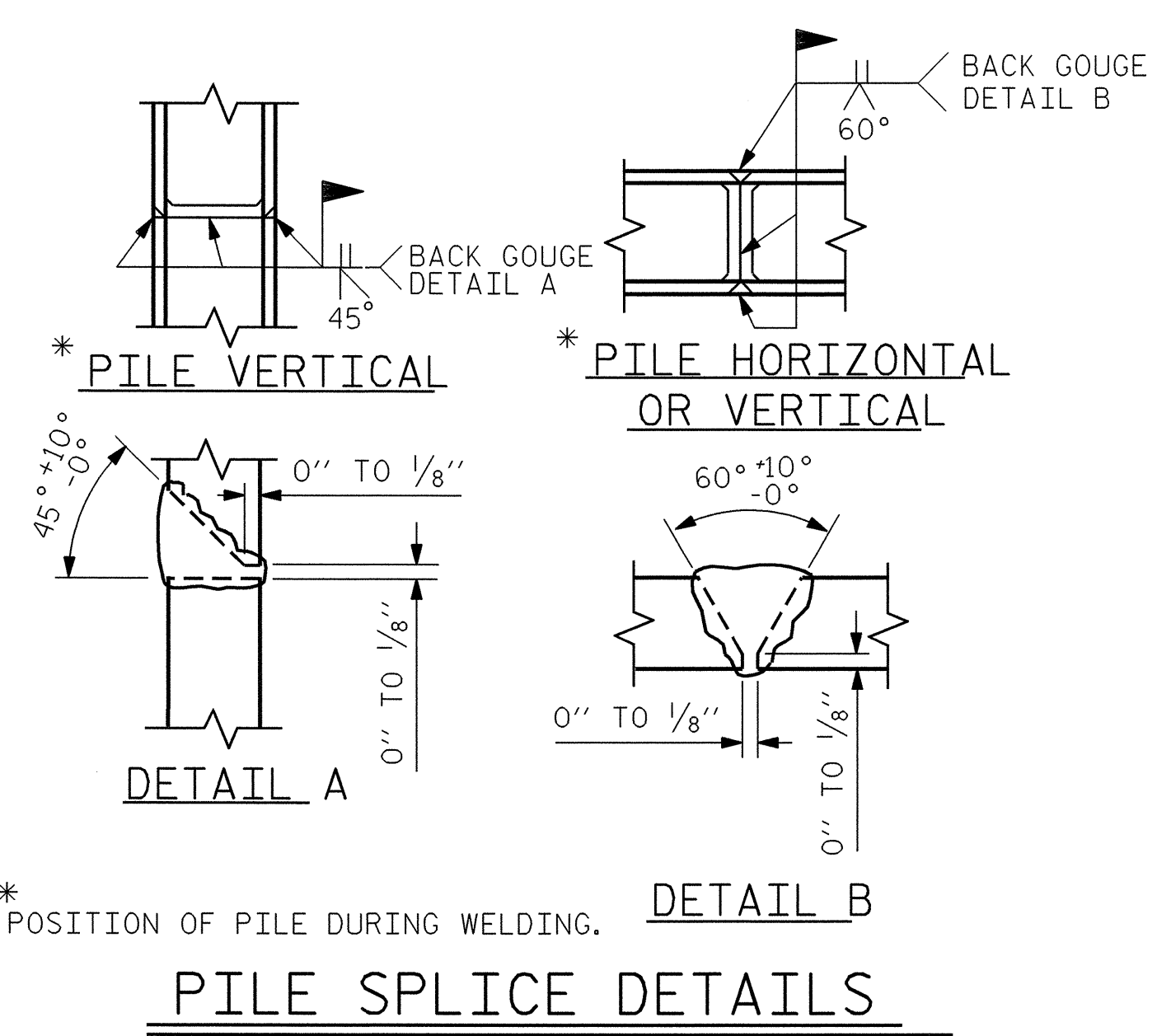
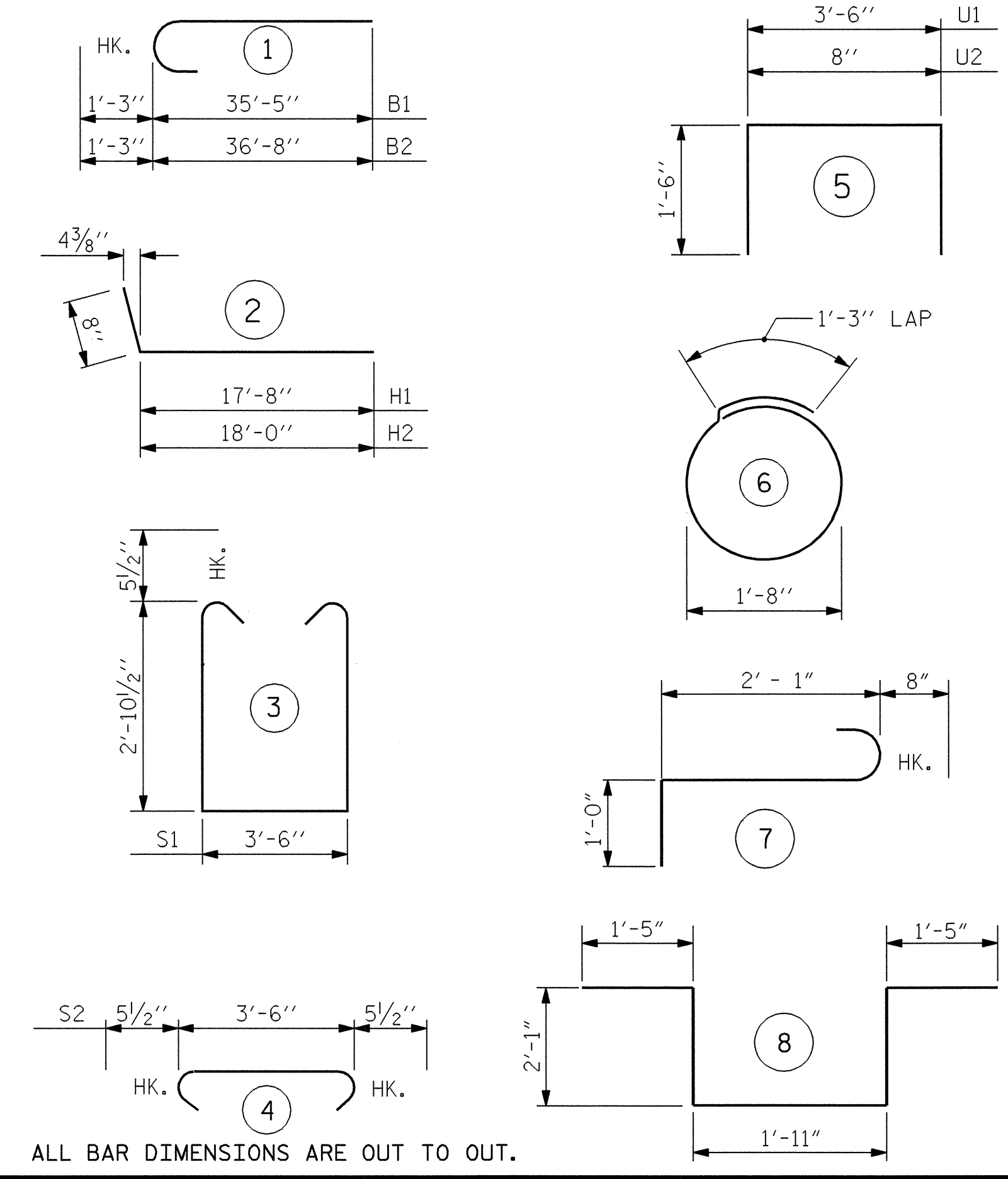


SECTION A-A

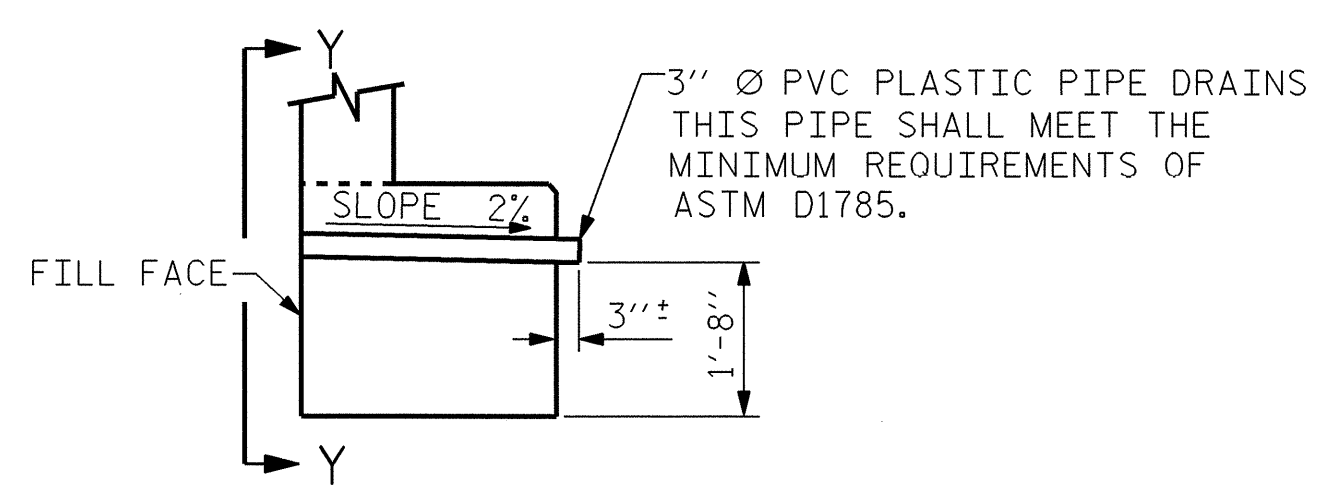


PILE SPLICE DETAILS

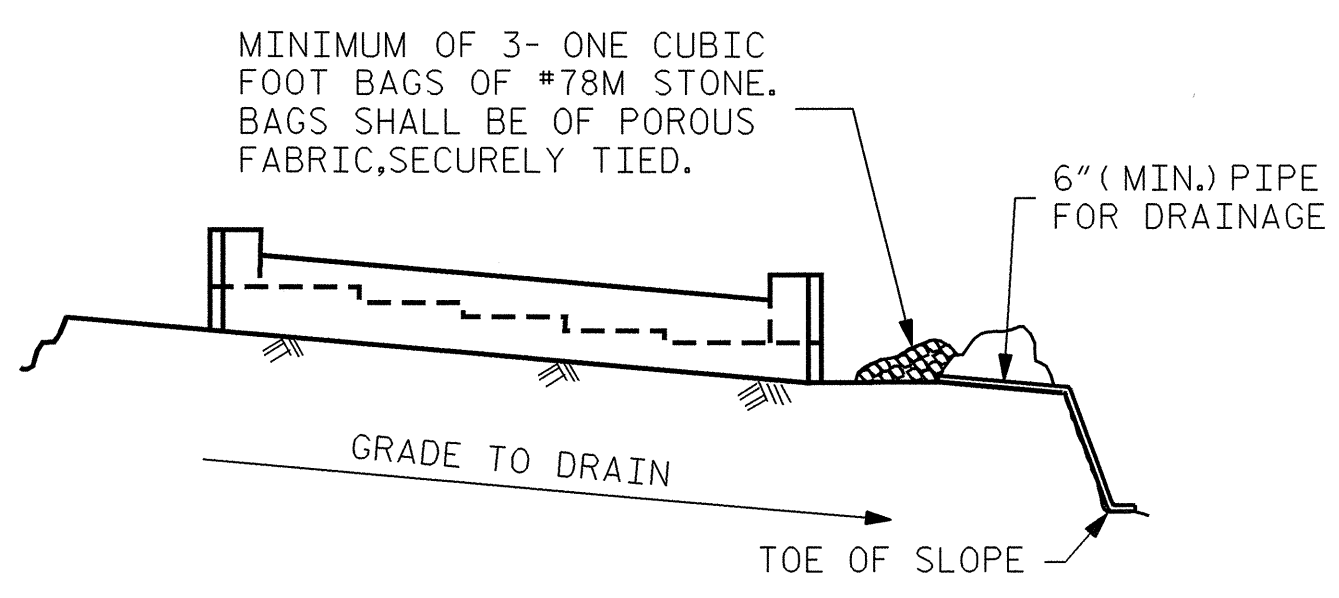


ALL BAR DIMENSIONS ARE OUT TO OUT.

BILL OF MATERIAL					
STAGE 1					
BAR	NO.	SIZE	TYPE	LENGTH	WEIGHT
B1	10	9	1	36'-8"	1247
B2	10	9	1	37'-11"	1289
B3	8	5	STR.	33'-11"	283
B4	12	4	STR.	23'-3"	186
B5	15	4	STR.	3'-6"	35
B6	10	4	STR.	2'-6"	17
B7	10	4	STR.	16'-9"	115
H1	11	5	2	18'-4"	210
H2	11	5	2	18'-8"	214
K1	30	4	STR.	23'-3"	465
K2	4	4	STR.	4'-8"	12
S1	65	5	3	10'-2"	689
S2	65	5	4	4'-5"	299
S3	24	4	6	6'-6"	104
S4	3	6	7	3'-9"	17
S5	1	6	8	8'-11"	13
U1	26	4	5	6'-6"	113
U2	57	4	5	3'-8"	140
V1	114	5	STR.	8'-5"	1001
V2	44	5	STR.	10'-8"	490
REINFORCING STEEL					6939
CLASS A CONCRETE BREAKDOWN					
POUR #1					
CAP & LOWER WINGS					34.7 Yds.3
POUR #2					
BACKWALL & UPPER WINGS					18.1 Yds.3
TOTAL CLASS A CONCRETE					52.8 Yds.3
HP 12 X 53 STEEL PILES					
NO. 14					1050 Lin. Ft.



SECTION THRU CAP

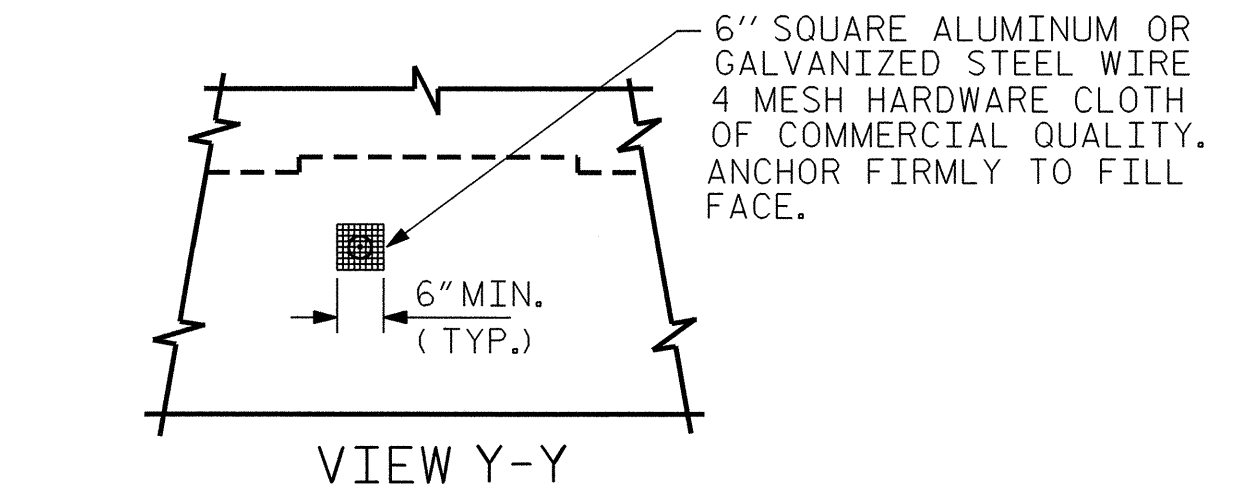


BAGGED STONE AND PIPE SHALL BE PLACED IMMEDIATELY AFTER COMPLETION OF END BENT EXCAVATION. PIPE MAY BE EITHER CONCRETE, CORRUGATED STEEL, CORRUGATED ALUMINUM ALLOY, OR CORRUGATED PLASTIC. PERFORATED PIPE WILL NOT BE ALLOWED.

BAGGED STONE SHALL REMAIN IN PLACE UNTIL THE ENGINEER DIRECTS THAT IT BE REMOVED. THE CONTRACTOR SHALL REMOVE AND DISPOSE OF SILT ACCUMULATIONS AT BAGGED STONE WHEN SO DIRECTED BY THE ENGINEER. BAGS SHALL BE REMOVED AND REPLACED WHENEVER THE ENGINEER DETERMINES THAT THEY HAVE DETERIORATED AND LOST THEIR EFFECTIVENESS.

NO SEPARATE PAYMENT WILL BE MADE FOR THIS WORK AND THE ENTIRE COST OF THIS WORK SHALL BE INCLUDED IN THE UNIT CONTRACT PRICE BID FOR THE SEVERAL PAY ITEMS.

TEMPORARY DRAINAGE AT END BENT



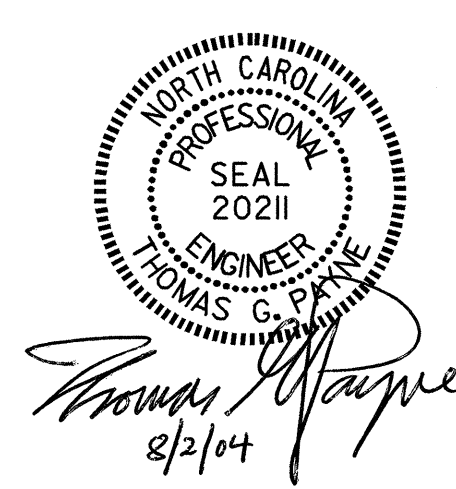
VIEW Y-Y

NOTE: NO SEPARATE PAYMENT WILL BE MADE FOR FURNISHING AND INSTALLING THE PVC PLASTIC PIPE DRAINS, HARDWARE CLOTH AND FASTENERS. THE ENTIRE COST OF THIS WORK SHALL BE INCLUDED IN THE UNIT CONTRACT PRICE BID FOR THE SEVERAL PAY ITEMS.

PIPE DRAIN DETAILS

PROJECT NO. I-2102
FORSYTH COUNTY
 STATION: 20+71.54 -L-

SHEET 4 OF 5



STATE OF NORTH CAROLINA					
DEPARTMENT OF TRANSPORTATION					
RALEIGH					
SUBSTRUCTURE					
END BENT #1					
(STAGE 1)					
REVISIONS					
NO.	BY:	DATE:	NO.	BY:	DATE:
1			3		
2			4		
SHEET NO.					S-35
TOTAL SHEETS					51