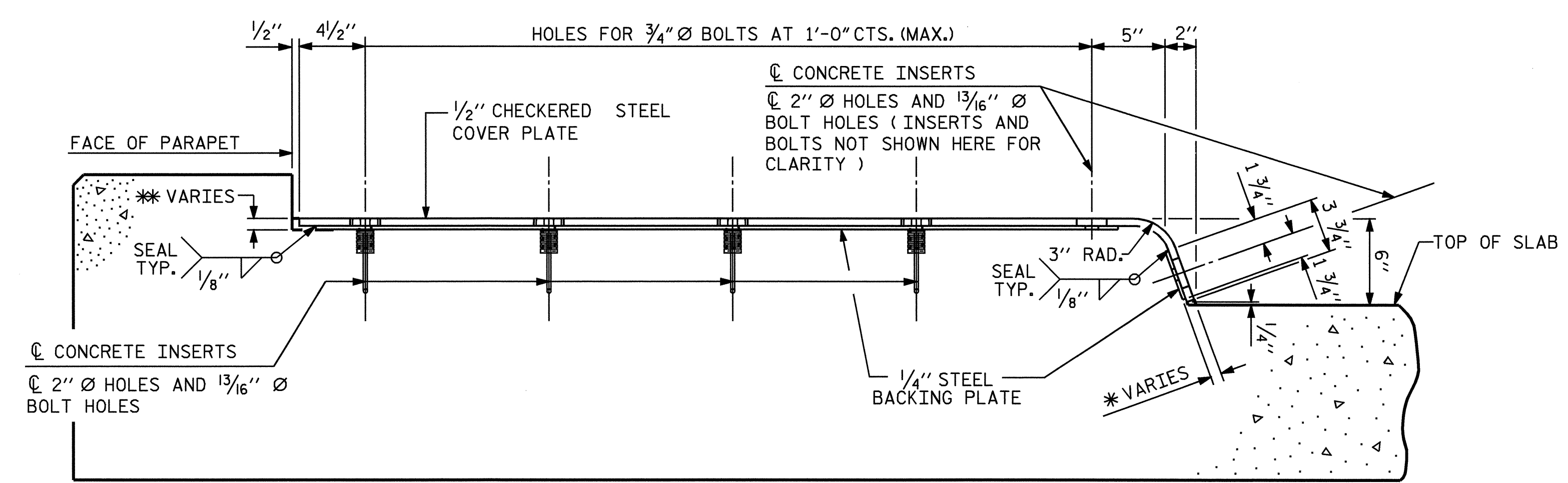


PLAN VIEW OF EVAZOTE JOINT SEAL @ END BENT FOR SIDEWALK

BEGIN APPROACH SLAB SHOWN, END APPROACH SLAB SIMILAR

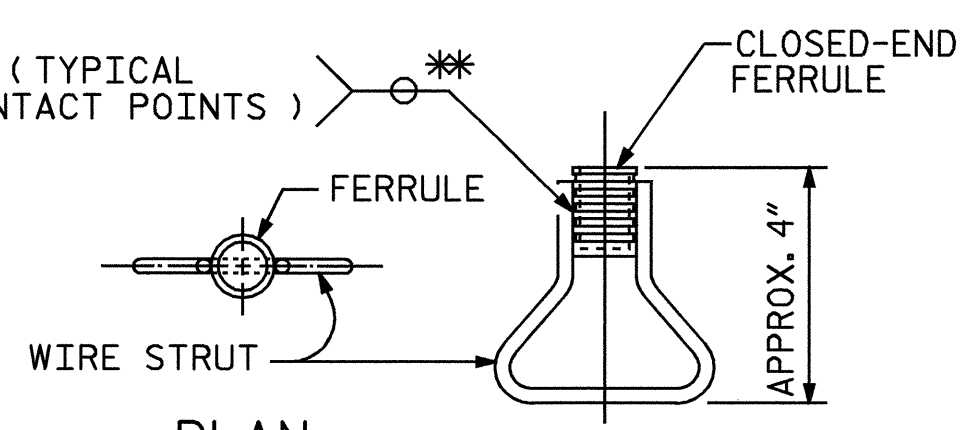
SIDEWALK COVER PLATE DETAIL-TYPE II



END VIEW
(NORMAL TO SIDEWALK)

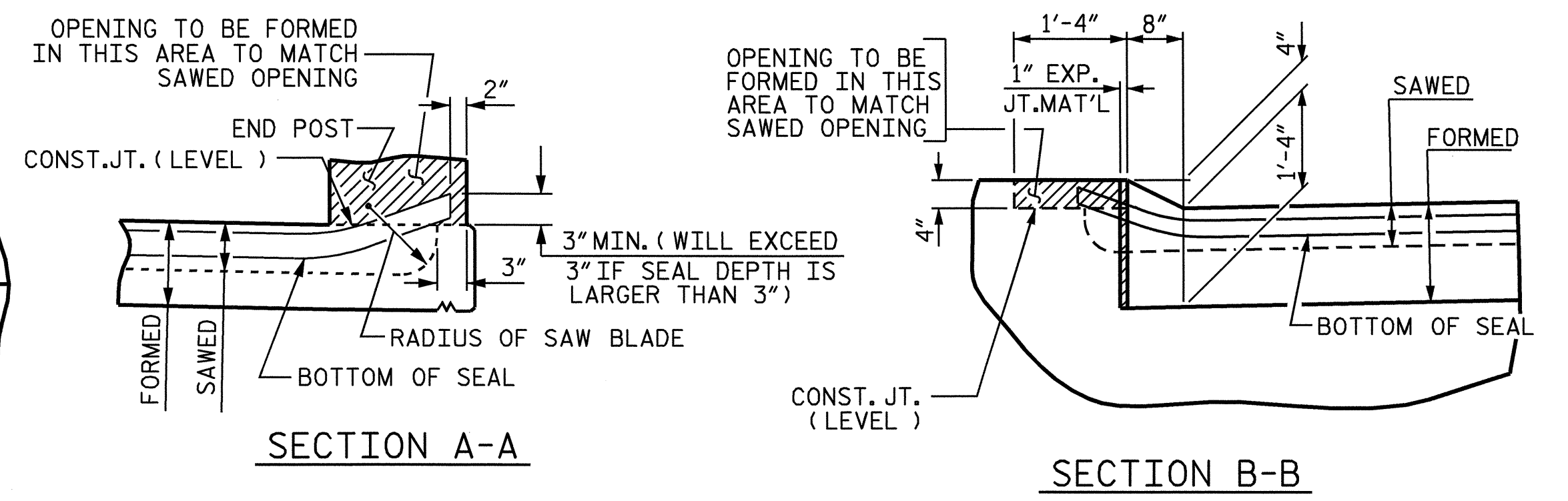
**** CONCRETE RECESS DIMENSIONS:**
 13/16" FOR THE SIDE OF THE JOINT HAVING THE 1/2" COVER PLATE WITH A 1/4" BACKING PLATE.
 3/16" FOR THE SIDE OF THE JOINT HAVING ONLY THE 1/2" COVER PLATE.

COVER PLATE DETAILS



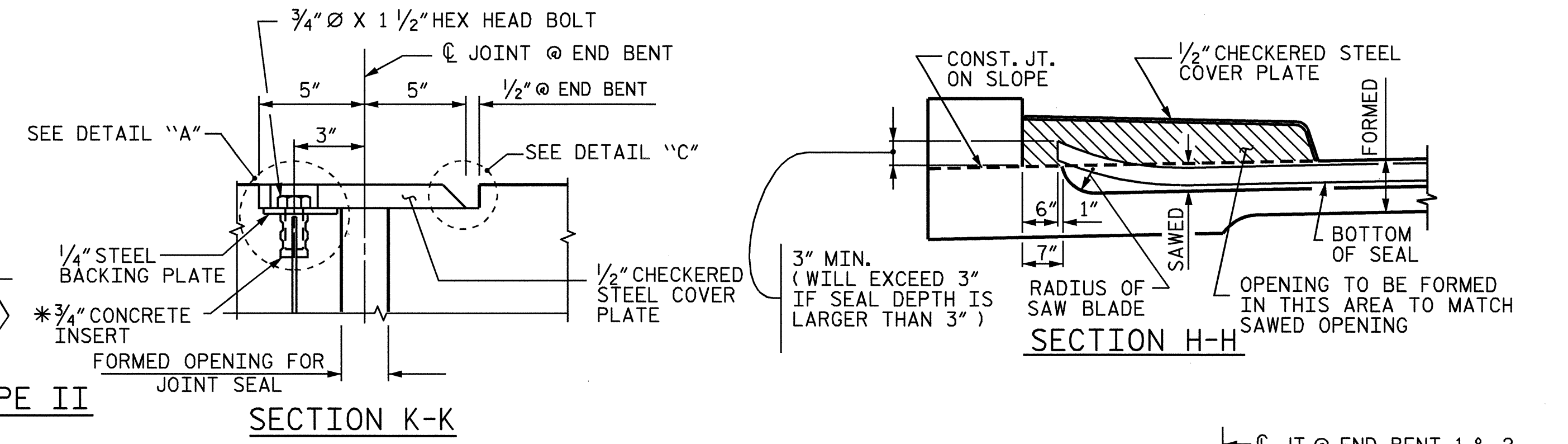
CONCRETE INSERT

**** EACH WELDED ATTACHMENT OF WIRE TO FERRULE SHALL DEVELOP THE TENSILE STRENGTH OF THE WIRE.**



JOINT SEAL DETAILS @ END BENT

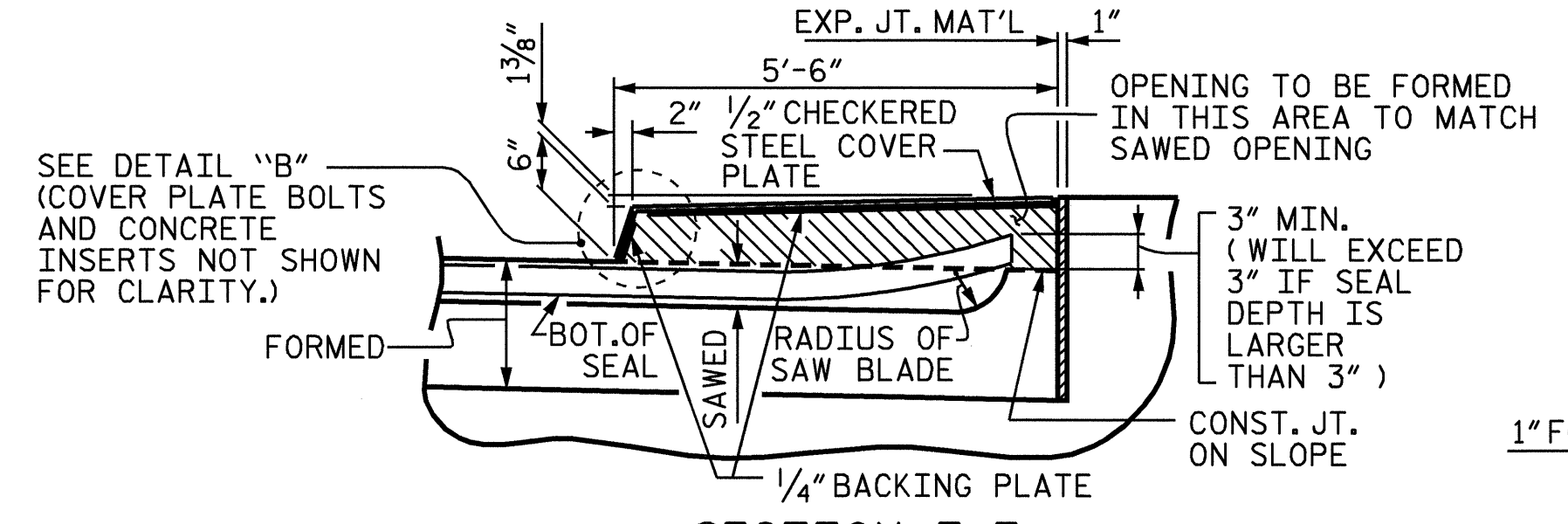
(FOR 2 BAR METAL RAIL WITH CURB)



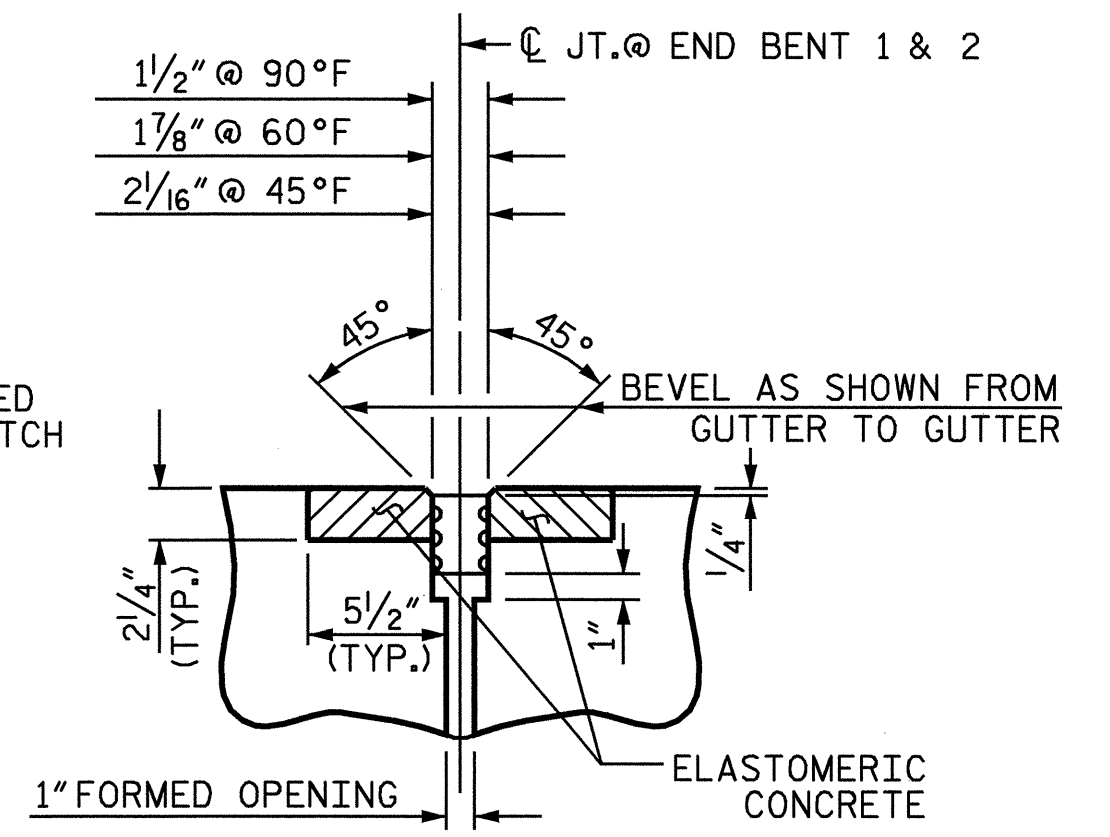
SECTION K-K

SECTION H-H

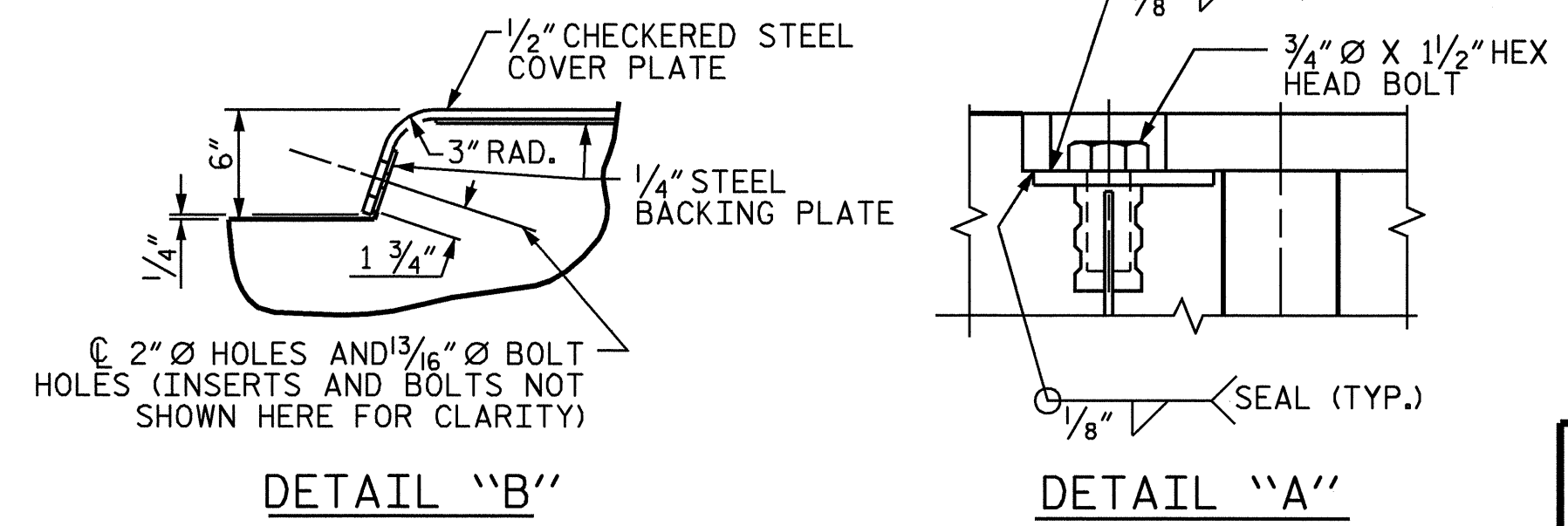
***THE 3/4" CONCRETE INSERTS SHALL BE CLOSED-END FERRULES WITH LOOPED WIRE STRUTS ATTACHED TO THEM. THE INSERTS SHALL CONFORM TO AASHTO M169, GRADE 12L14 AND SHALL HAVE A TENSILE WORKING LOAD CAPACITY OF 3000 LBS.**



SECTION I-I

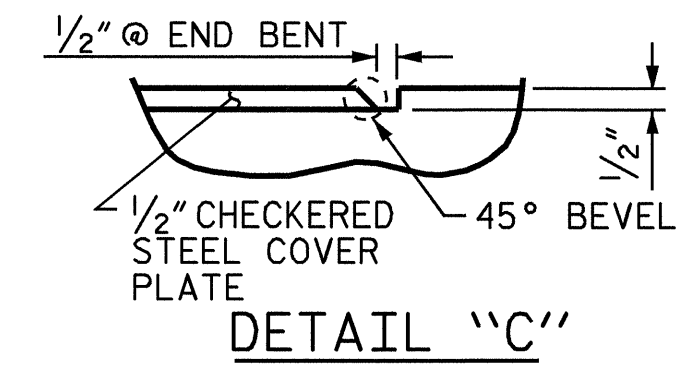


SECTION C-C
EVAZOTE JOINT SEAL



DETAIL "B"

DETAIL "A"



DETAIL "C"

JOINT SEAL DETAILS @ END BENT

(FOR SIDEWALK)



PROJECT NO. I-2102
 FORSYTH COUNTY
 STATION: 20+71.54 -L-

SHEET 4 OF 5

STATE OF NORTH CAROLINA DEPARTMENT OF TRANSPORTATION RALEIGH						SHEET NO. S-50
STANDARD BRIDGE APPROACH SLAB DETAILS						TOTAL SHEETS 51
REVISIONS						
NO.	BY:	DATE:	NO.	BY:	DATE:	
1			3			
2			4			

ASSEMBLED BY :	A. CHAN	DATE :	5/20/04
CHECKED BY :	A.K. PATEL	DATE :	6/1/04
DRAWN BY :	FCJ	REV. 8/16/99	MAB/LES
CHECKED BY :	ARB	REV. 10/17/00	RWW/LES
		REV. 5/7/03	RWW/JTE