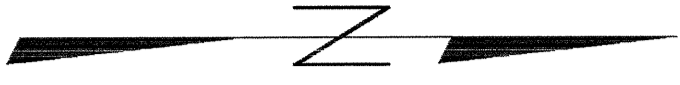
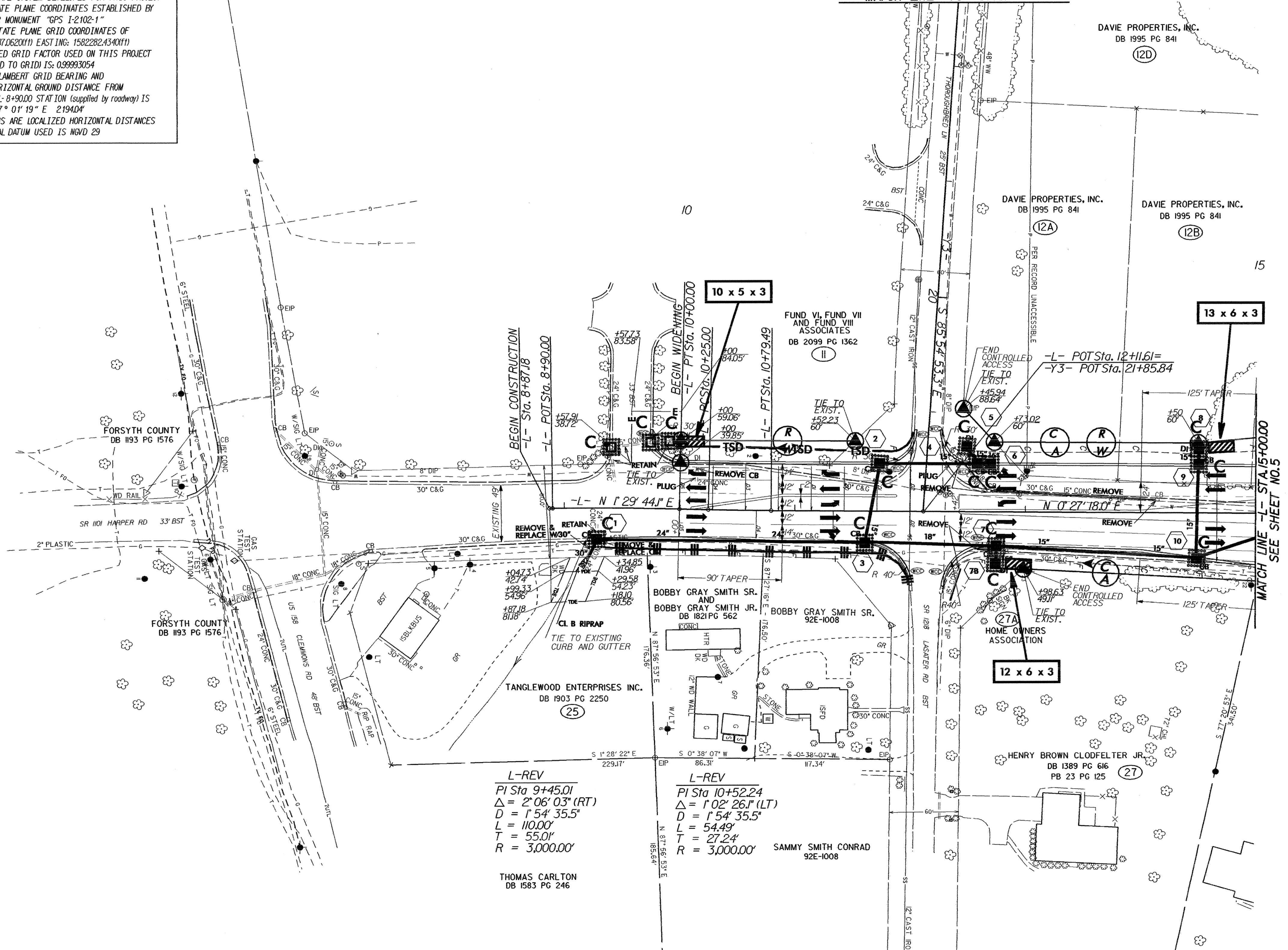


PROJECT REFERENCE NO.	SHEET NO.
1-2102	EC-9/CONST.4
R/W SHEET NO.	4
ROADWAY DESIGN ENGINEER	HYDRAULICS ENGINEER

DATUM DESCRIPTION
 THE LOCALIZED COORDINATE SYSTEM DEVELOPED FOR THIS PROJECT IS BASED ON THE STATE PLANE COORDINATES ESTABLISHED BY NCGS FOR MONUMENT "GPS 1-2102-1" WITH NAD 83 STATE PLANE GRID COORDINATES OF NORTHING: 828887.0620(1) EASTING: 1582282.4340(1) THE AVERAGE COMBINED GRID FACTOR USED ON THIS PROJECT (GROUND TO GRID) IS: 0.99993054 THE N.C. LAMBERT GRID BEARING AND LOCALIZED HORIZONTAL GROUND DISTANCE FROM "GPS 1-2102-1" TO L-8+90.00 STATION (supplied by roadway) IS N 87° 01' 19" E 2194.04' ALL LINEAR DIMENSIONS ARE LOCALIZED HORIZONTAL DISTANCES VERTICAL DATUM USED IS NGVD 29



SEE SHEET NO.8
 MATCH LINE -Y3- STA.17+44.93



L-REV
 PI Sta 9+45.01
 $\Delta = 2^{\circ} 06' 03''$ (RT)
 $D = 1^{\circ} 54' 35.5''$
 $L = 110.00'$
 $T = 55.01'$
 $R = 3,000.00'$

L-REV
 PI Sta 10+52.24
 $\Delta = 1^{\circ} 02' 26.1''$ (LT)
 $D = 1^{\circ} 54' 35.5''$
 $L = 54.49'$
 $T = 27.24'$
 $R = 3,000.00'$

MATCH LINE -L- STA.15+00.00
 SEE SHEET NO.5

8/17/99

14-JUL-2004 17:19
 c:\nvel\l\p\univ\state\1-2102\ps4REV.psh
 ps4REV.dwg