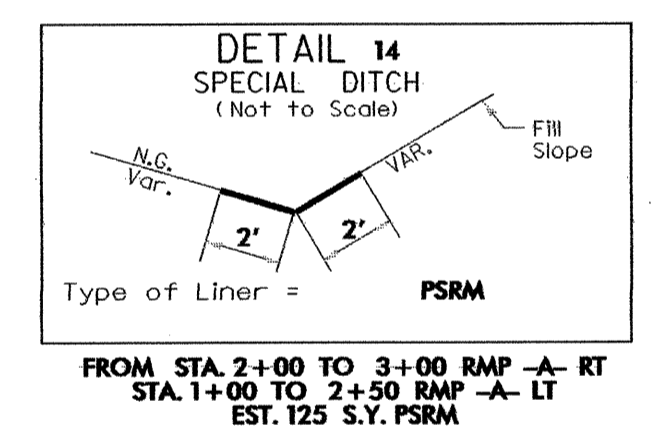
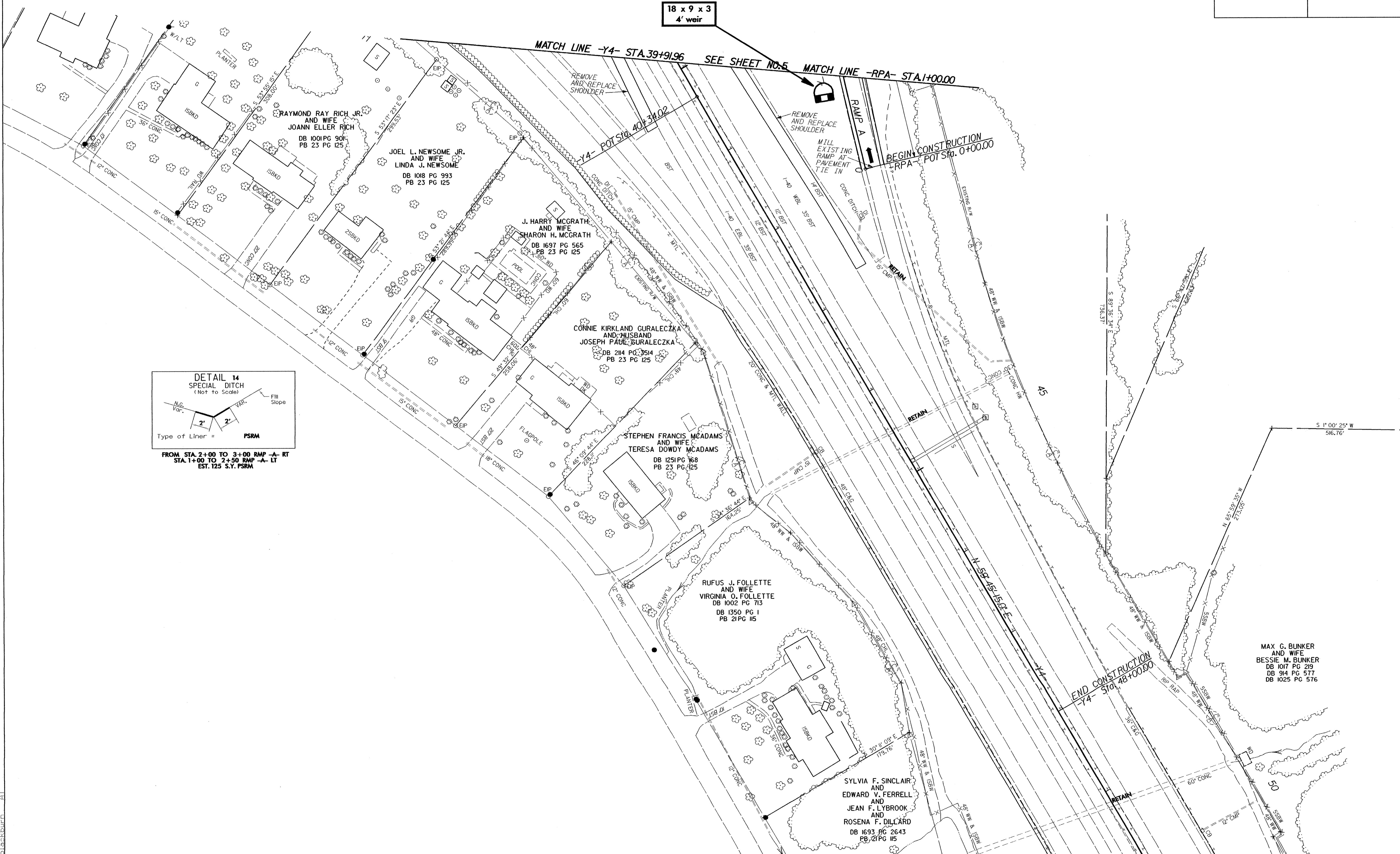


PROJECT REFERENCE NO.	SHEET NO.
1-2102	EC-14/CONST.9
R/W SHEET NO.	9
ROADWAY DESIGN ENGINEER	HYDRAULICS ENGINEER

8/17/99

18 x 9 x 3
4' weir



14-Jul-2004 11:24
c:\nvstate\1-2102\ps9REV.psh
db\backburn

MAX G. BUNKER
AND WIFE
BESSIE M. BUNKER
DB 1017 PG 219
DB 914 PG 577
DB 1025 PG 576