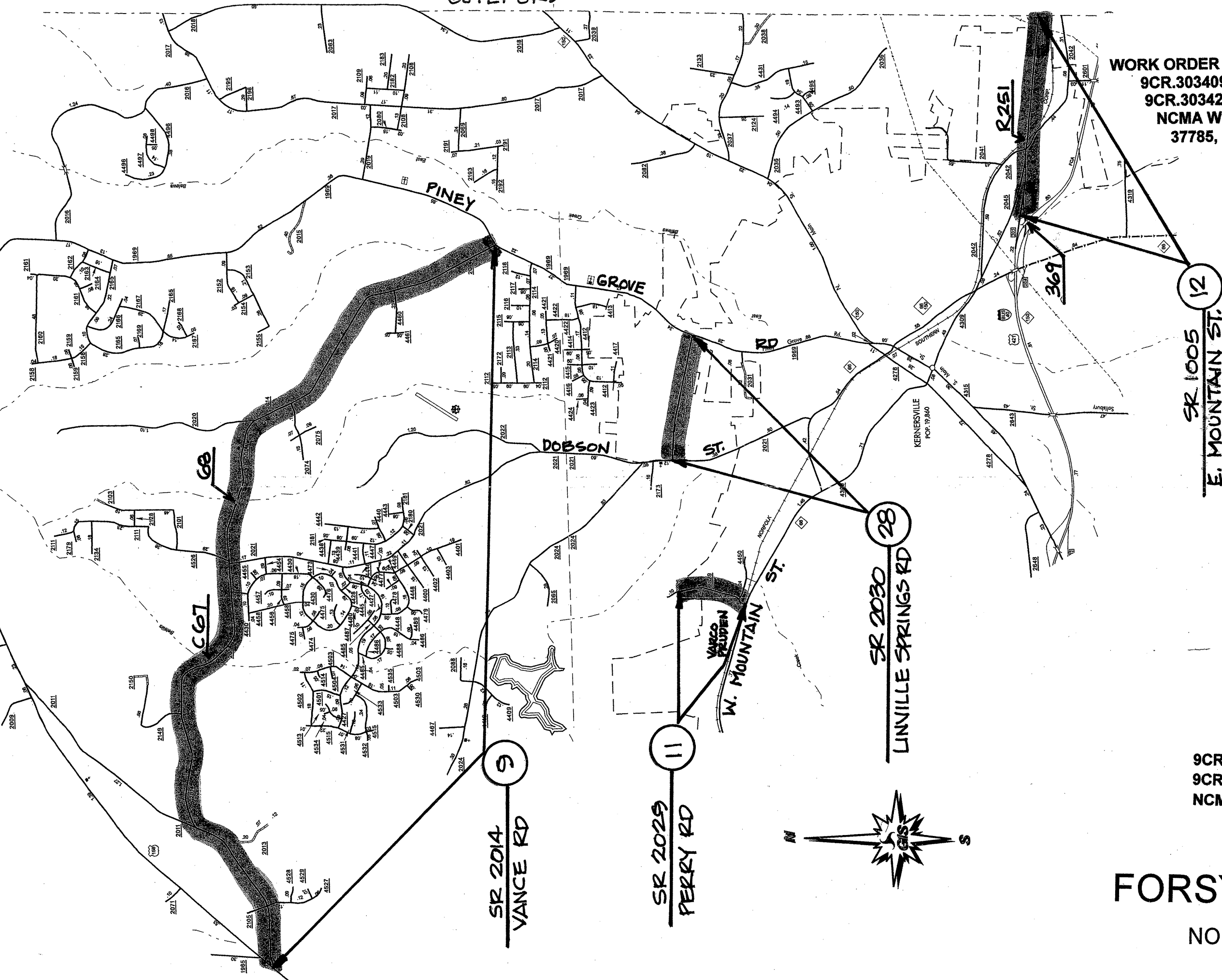


WORK ORDER NOS. 9CR.10341.3, 9CR.20341.3,  
9CR.303409.3, 9CR.303418.3, 9CR.303423.3,  
9CR.303426.3, 9CR.303428.3, 9CR.303499.3  
NCMA WORK ORDER NOS. 36913, 37784,  
37785, 37786, 37787, & (STOKES) 37807  
LOCATION MAP 6 OF 10



SR 1005  
E. MOUNTAIN ST.

SR 2030  
LINVILLE SPRINGS RD

SR 2029  
PERRY RD

SR 2014  
VANCE RD

9CR.20341.3 - MAP 9  
9CR.303409.3 - MAPS 11, 12  
NCMA 37787 - MAP 28