

TWO LANE, TWO WAY WORK ZONE (L-LINES)

WBS Elements: 36913, 37784, 37785, 37786, 37787, 37807, 9CR.10341.3, 9CR.20341.3, 9CR.303409.3, 9CR.303418.3, 9CR.303423.3, 9CR.303426.3, 9CR.303428.3 & 9CR.303499.3

PROJ. REFERENCE NO. See to the Left	SHEET NO. NCMA-1
--	---------------------

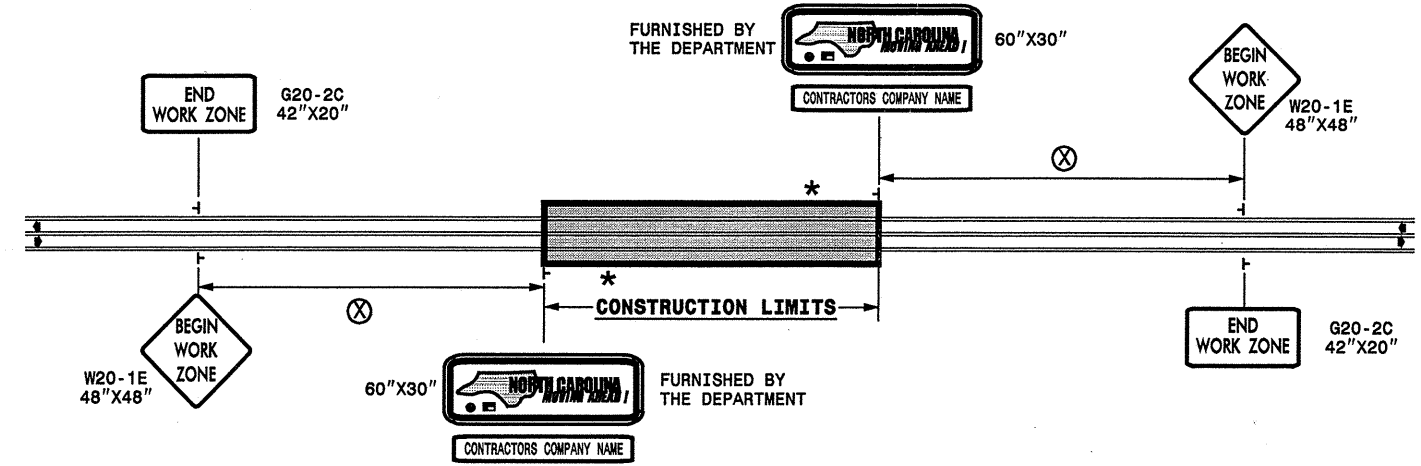
FURNISHED BY THE DEPARTMENT



60"X30"

CONTRACTORS COMPANY NAME

60" Max. X 12"



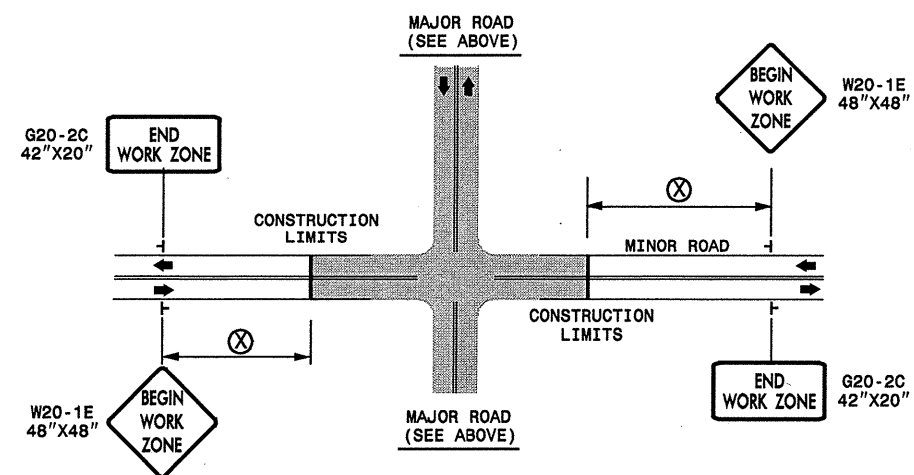
POSTED SPEED LIMIT (M.P.H.)	RECOMMENDED MINIMUM SIGN SPACING
P.S.L. ≤ 50	350'
P.S.L. ≥ 55	500'

* **WORK ZONE NEXT XX MILES** G20-1 42"X20"

* THIS SIGN TO BE USED ON PROJECTS LONGER THAN 2 MILES. THE NUMBER DISPLAYED ON THE SIGN IS TO BE A WHOLE NUMBER ROUNDED UP TO THE NEXT MILE. IT'S TO BE LOCATED 1,500 FEET INSIDE OF THE CONSTRUCTION LIMITS.

STATE OF NORTH CAROLINA
DEPT. OF TRANSPORTATION
DIVISION OF HIGHWAYS
RALEIGH, N.C.

INTERSECTIONS (-Y- LINES)

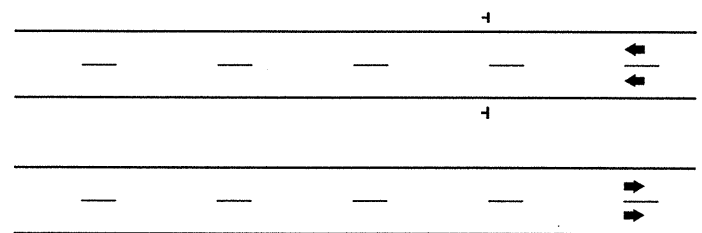


* ON INTERSECTION TYPE PROJECTS, SELECT THE MAJOR ROAD BASED ON THE HIGHER ADT.

FREEWAYS / INTERSTATES

DUAL MOUNT "BEGIN WORK ZONE" SIGNS 1,000' IN ADVANCE OF PROJECT LIMITS

DUAL MOUNT "MOVING AHEAD" SIGNS 500' IN ADVANCE OF PROJECT LIMITS



GENERAL NOTES

SEE SPECIAL PROVISIONS FOR "NORTH CAROLINA MOVING AHEAD" REQUIREMENTS.

LEGEND	
⊥	STATIONARY SIGN
◀	DIRECTION OF TRAFFIC FLOW

SHEET 1 OF 1

APPROVED: _____	DATE: _____	ADVANCE WARNING WORK ZONE SIGNS FOR "MOVING AHEAD"	
SEAL	SCALE: NONE		REVISIONS
	DATE: 07/03		
	DWG. BY: JSK		
	DESIGN BY: JSK		
	REVIEWED BY: SK		