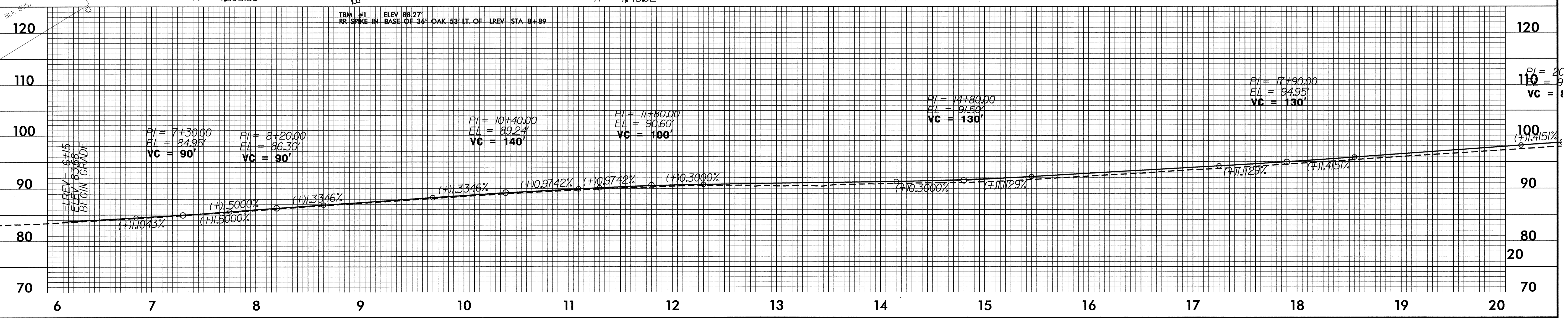
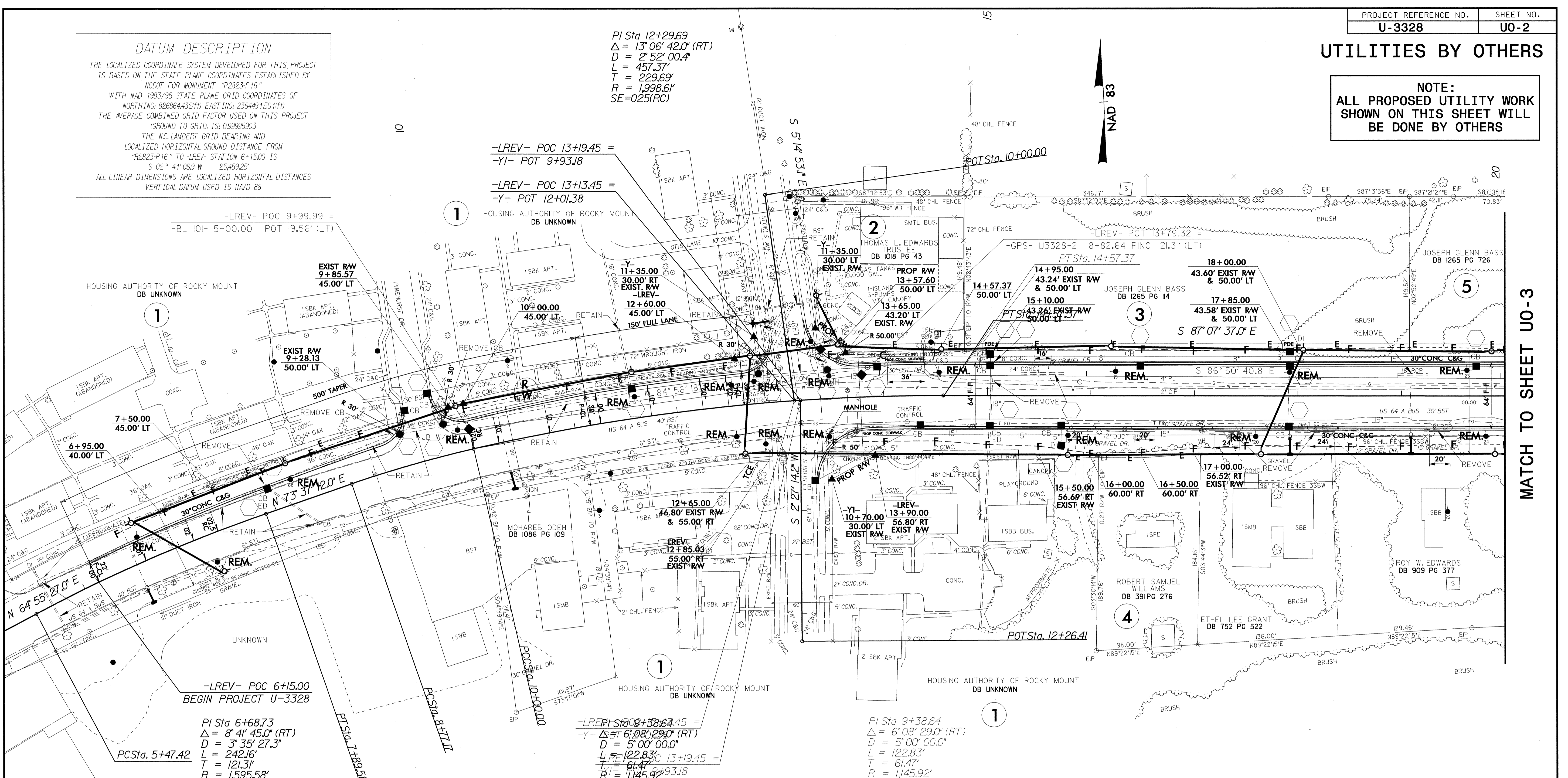


UTILITIES BY OTHERS

NOTE:
ALL PROPOSED UTILITY WORK
SHOWN ON THIS SHEET WILL
BE DONE BY OTHERS

DATUM DESCRIPTION
THE LOCALIZED COORDINATE SYSTEM DEVELOPED FOR THIS PROJECT IS BASED ON THE STATE PLANE COORDINATES ESTABLISHED BY NCOOT FOR MONUMENT "R2823-P16"
WITH NAD 1983/95 STATE PLANE GRID COORDINATES OF NORTHING: 826864.432(11) EASTING: 236449.150(11)
THE AVERAGE COMBINED GRID FACTOR USED ON THIS PROJECT (GROUND TO GRID) IS: 0.99995903
THE N.C. LAMBERT GRID BEARING AND LOCALIZED HORIZONTAL DISTANCE FROM "R2823-P16" TO -LREV- STATION 6+15.00 IS S 02° 41' 06.9" W 25,459.25'
ALL LINEAR DIMENSIONS ARE LOCALIZED HORIZONTAL DISTANCES VERTICAL DATUM USED IS NAVD 88

PI Sta 12+29.69
Δ = 13° 06' 42.0" (RT)
D = 2' 52" 00.4"
L = 457.37'
T = 229.69'
R = 1,998.61'
SE=025(RC)



MATCH TO SHEET U0-3

8/17/99