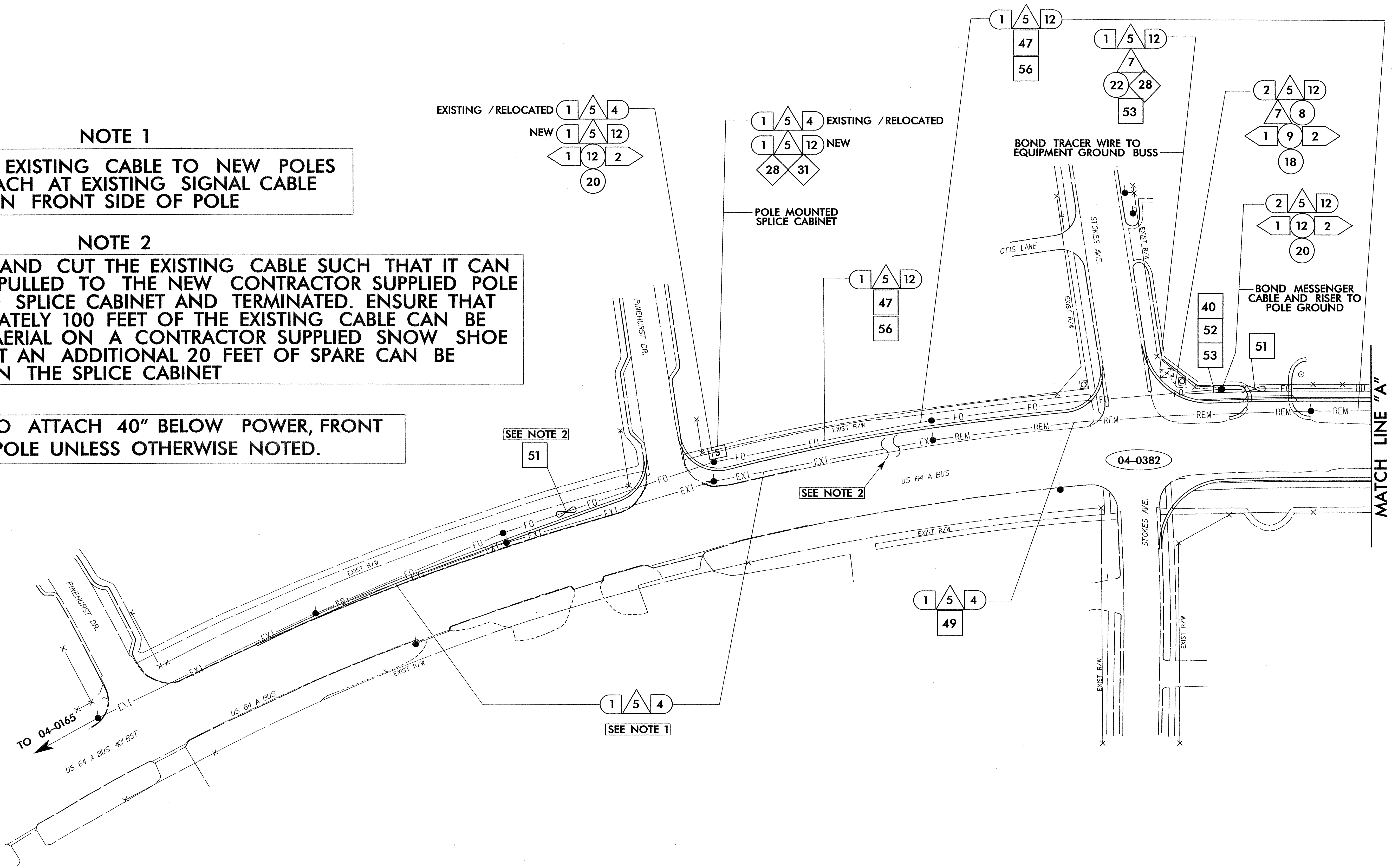


NOTE 1
 TRANSFER EXISTING CABLE TO NEW POLES AND ATTACH AT EXISTING SIGNAL CABLE HEIGHT ON FRONT SIDE OF POLE

NOTE 2
 MEASURE AND CUT THE EXISTING CABLE SUCH THAT IT CAN BE BACK PULLED TO THE NEW CONTRACTOR SUPPLIED POLE MOUNTED SPLICE CABINET AND TERMINATED. ENSURE THAT APPROXIMATELY 100 FEET OF THE EXISTING CABLE CAN BE STORED AERIAL ON A CONTRACTOR SUPPLIED SNOW SHOE AND THAT AN ADDITIONAL 20 FEET OF SPARE CAN BE STORED IN THE SPLICE CABINET

NCDOT TO ATTACH 40" BELOW POWER, FRONT SIDE OF POLE UNLESS OTHERWISE NOTED.



SEAL COUDUIT ENDS WITH MECHANICAL SEALING DEVICES AT ALL JUNCTION BOX / SIGNAL CABINET ENTRANCES.

SEPI ENGINEERING GROUP
 2300 Rexwoods Drive
 Suite 370
 Raleigh, NC 27607
 Tel: 919-789-9977 Fax: 789-9591

Prepared for:

 122 N. McDowell St., Raleigh, NC 27603
 SCALE: NONE

COMMUNICATION CABLE AND CONDUIT ROUTING PLANS

Division 4	Edgecombe County	Rocky Mount
PLAN DATE: July 2004	REVIEWED BY: L. M. Eddins	
PREPARED BY: W. D. Yelverton	REVIEWED BY: S. S. Asefnia	
REVISIONS	INIT.	DATE

SEAL

 SIGNATURE: S. S. Asefnia
 DATE: 8/16/04
 CADD FILE NAME: U-3328UMR.dgn