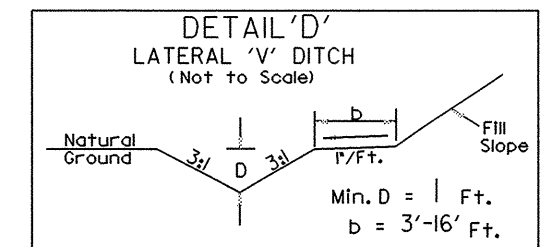


7/2/99

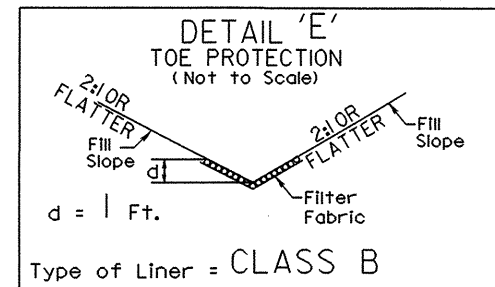
REVISIONS

PROJECT REFERENCE NO. B-4334	SHEET NO. 5
RW SHEET NO.	
ROADWAY DESIGN ENGINEER	HYDRAULICS ENGINEER

SEE SHEET 6 FOR -L- PROFILE
NOTE: ALL DRIVES OPENED TO 20' WIDTH WITH 10' RADII



-L- STA 31+00 TO 36+00 (LT)
EST. DDE = 52 CY



Type of Liner = CLASS B
-L- STA 30+00 TO 31+00 (LT)
EST. 32 TONS CL. B. STONE
W/ 715Y FILTER FABRIC

-DRIVE-
 PI Sta 10+48.96 PI Sta 12+46.46
 $\Delta = 71' 44'' 06.1''$ (LT) $\Delta = 92' 25'' 10.4''$ (RT)
 $D = 143' 14'' 22.0''$ $D = 95' 29'' 34.7''$
 $L = 50.08'$ $L = 96.78'$
 $T = 28.92'$ $T = 62.59'$
 $R = 40.00'$ $R = 60.00'$

WANDA WILSON GOBBLE
DB 1075 PG 159

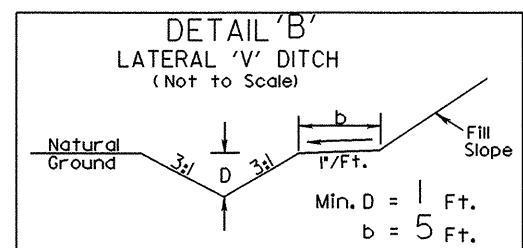
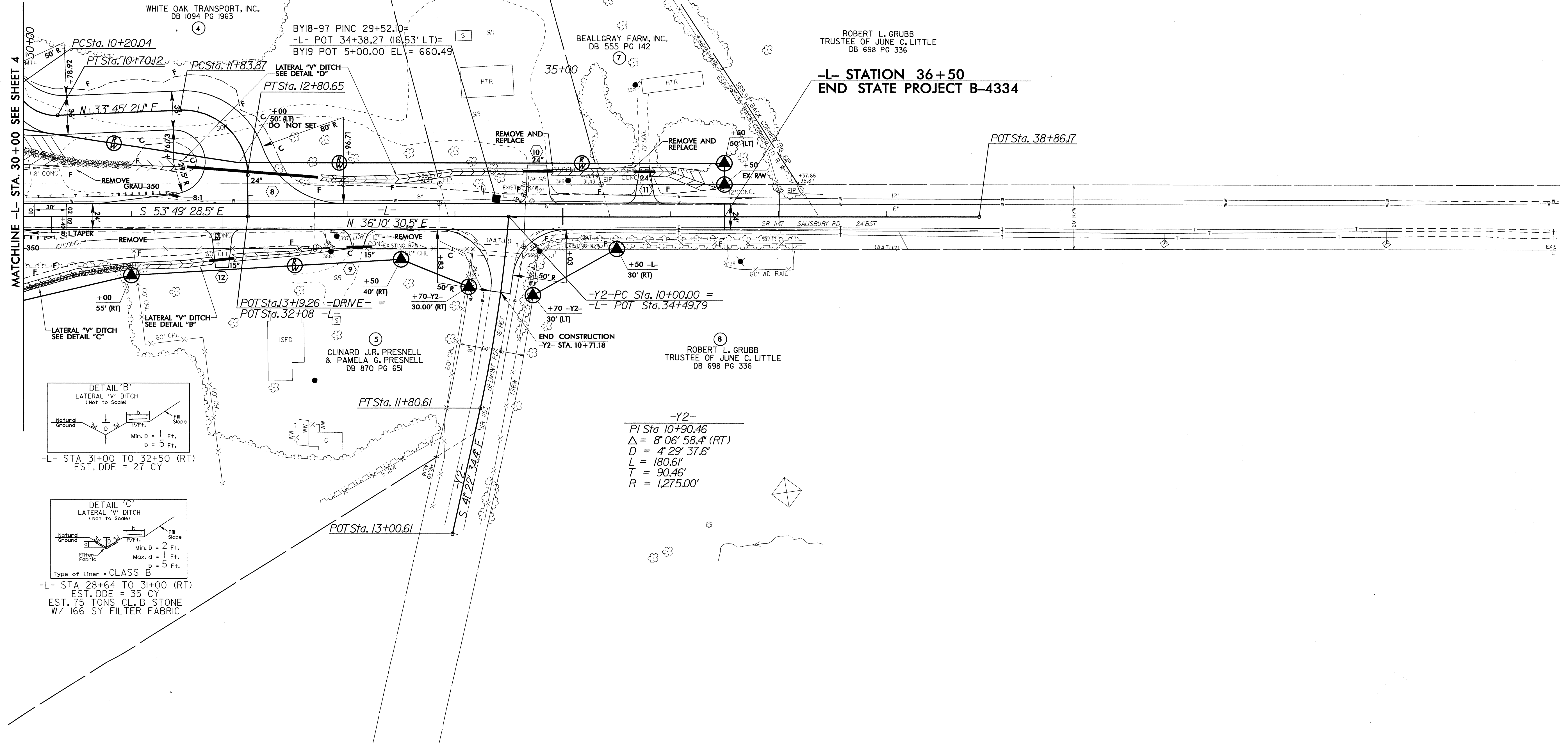
WHITE OAK TRANSPORT, INC.
DB 1094 PG 1963

BY18-97 PINC 29+52.10
-L- POT 34+38.27 (16.53' LT)
BY19 POT 5+00.00 EL = 660.49

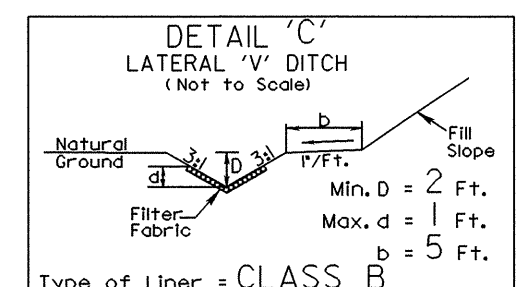
BEALLGRAY FARM, INC.
DB 555 PG 142

ROBERT L. GRUBB
TRUSTEE OF JUNE C. LITTLE
DB 698 PG 336

-L- STATION 36+50
END STATE PROJECT B-4334

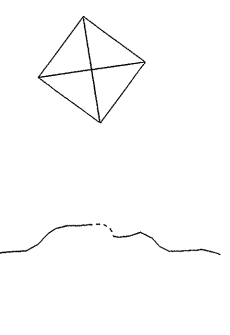


-L- STA 31+00 TO 32+50 (RT)
EST. DDE = 27 CY



Type of Liner = CLASS B
-L- STA 28+64 TO 31+00 (RT)
EST. DDE = 35 CY
EST. 75 TONS CL. B. STONE
W/ 166 SY FILTER FABRIC

-Y2-
 PI Sta 10+90.46
 $\Delta = 8' 06'' 58.4''$ (RT)
 $D = 4' 29'' 37.6''$
 $L = 180.61'$
 $T = 90.46'$
 $R = 1,275.00'$



13-JUL-2004 07:36
R:\proj\134334\5\PSH
BWedeking AT