

NOTES

PIPE DRAINS MAY BE SHIFTED SLIGHTLY AS NECESSARY TO CLEAR REINFORCING STEEL AND DOWELS.

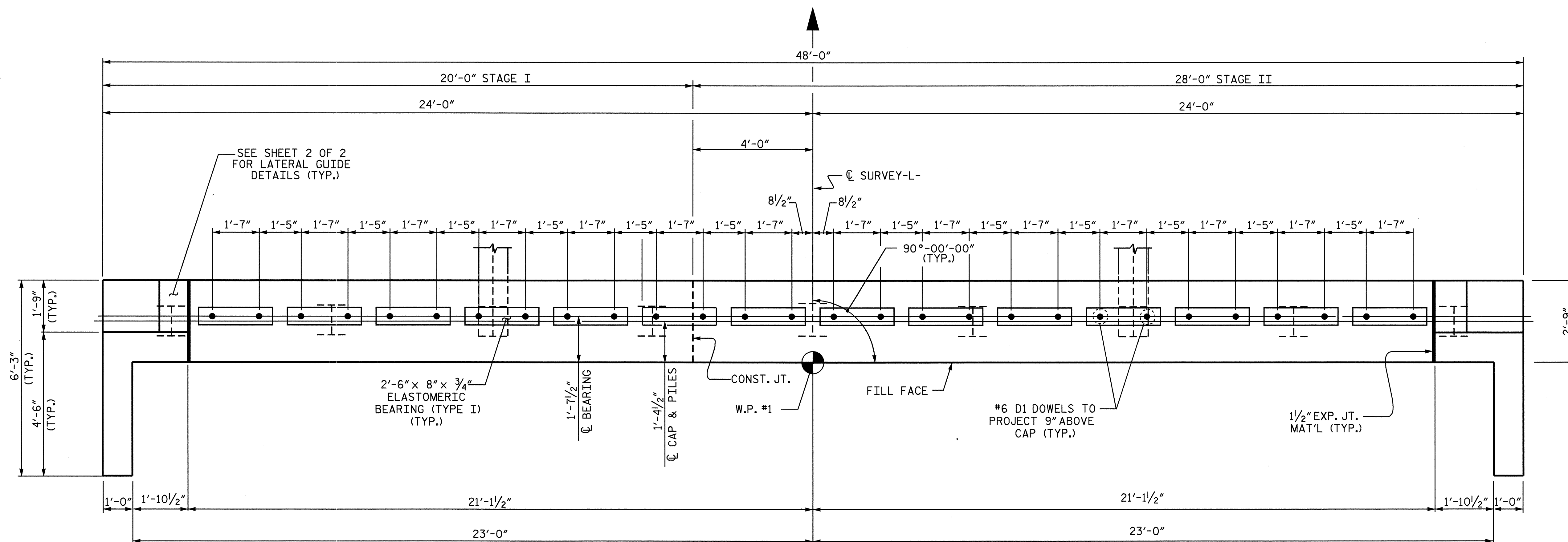
STIRRUPS IN CAP MAY BE SHIFTED AS NECESSARY TO CLEAR DOWELS.

THE LATERAL GUIDE AT EACH END OF THE CAP IS NOT TO BE POURED UNTIL AFTER THE CORED SLAB UNITS ARE IN PLACE. SEE LATERAL GUIDE DETAILS, SHEET 2 OF 2.

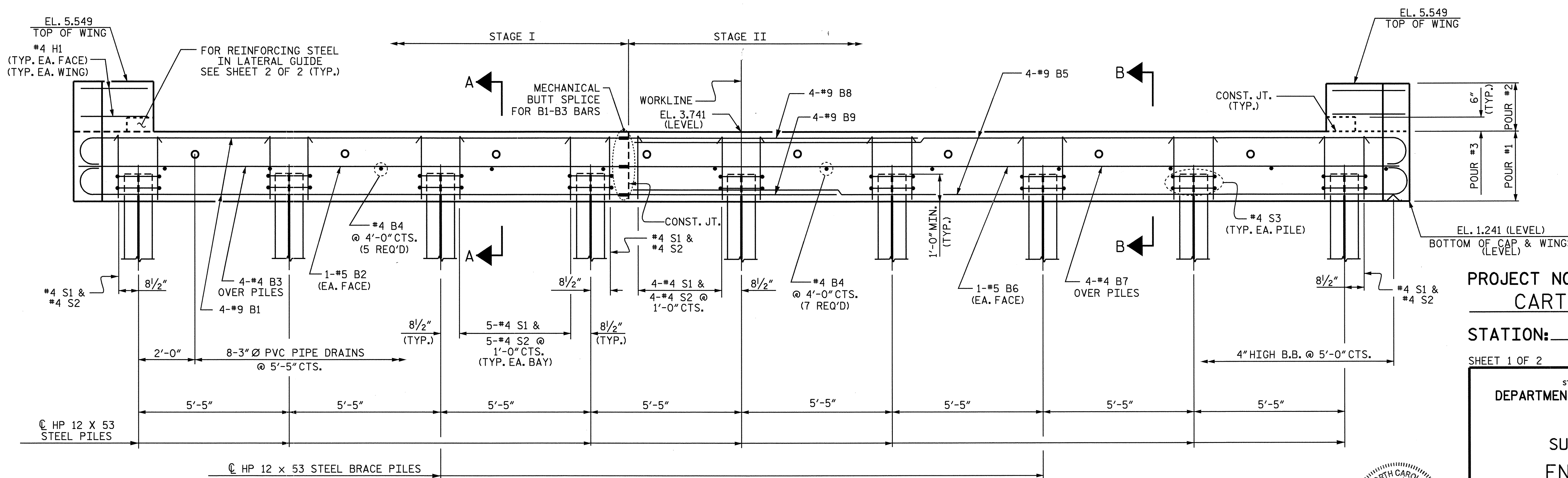
THE CONTRACTOR SHALL PROVIDE FOR INSTALLATION OF THE 4" Ø DRAIN PIPE THROUGH THE WING WALL AS REQUIRED FOR REINFORCED BRIDGE APPROACH FILLS. SEE THE ROADWAY PLANS. REINFORCING STEEL IN THE WING WALL MAY BE SHIFTED AS NECESSARY TO CLEAR THE DRAIN PIPE.

FOR PILE SPlice DETAILS, SEE END BENT 2 SHEET 2 OF 2.

MECHANICAL BUTT SPLICES SHALL NOT EXTEND BEYOND STAGE I CONSTRUCTION AND SHALL BE EPOXY COATED. FOR MECHANICAL BUTT SPLICING FOR REINFORCING STEEL, SEE SPECIAL PROVISIONS.



PLAN



ELEVATION

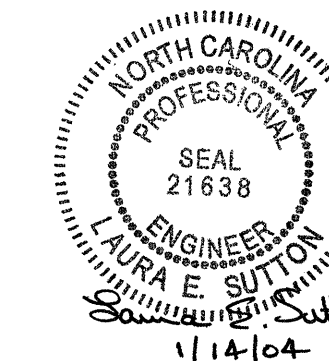
PROJECT NO. B-3626
CARTERET COUNTY
 STATION: 20+29.50-L-

SHEET 1 OF 2

STATE OF NORTH CAROLINA
 DEPARTMENT OF TRANSPORTATION
 RALEIGH

**SUBSTRUCTURE
 END BENT 1**

REVISIONS						SHEET NO.
NO.	BY:	DATE:	NO.	BY:	DATE:	S-13
1			3			TOTAL SHEETS
2			4			23



DRAWN BY: J.H. MILLER DATE: 4/23/03
 CHECKED BY: S.H. SOCKWELL DATE: 6/19/03

13-JAN-2004 14:05 W:\sq\cd\l\3626\jmillervb3626_sd.e*01.dgn