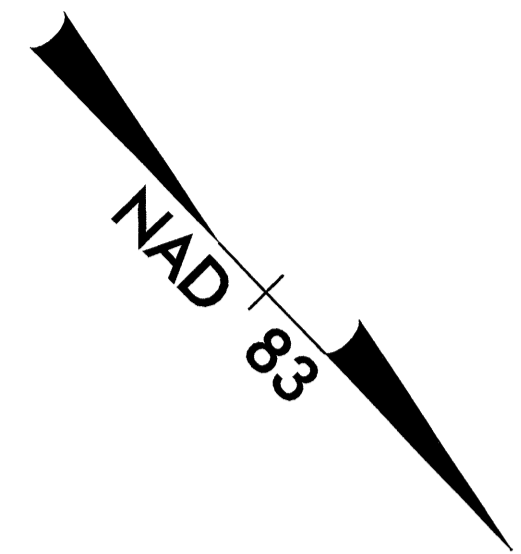


ROADWAY DESIGN ENGINEER GREGORY A. KLEMM	HYDRAULICS ENGINEER DOUGLAS B. HESTER

FOR HYDRAULIC DESIGN ASSOCIATED WITH TEMPORARY DRAINAGE STRUCTURE NUMBER T4
 HDR Engineering, Inc. of the Carolinas
 3733 National Drive, Suite 207 Raleigh, N.C. 27612

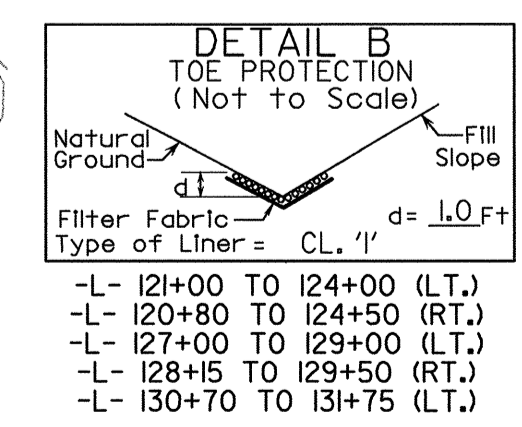
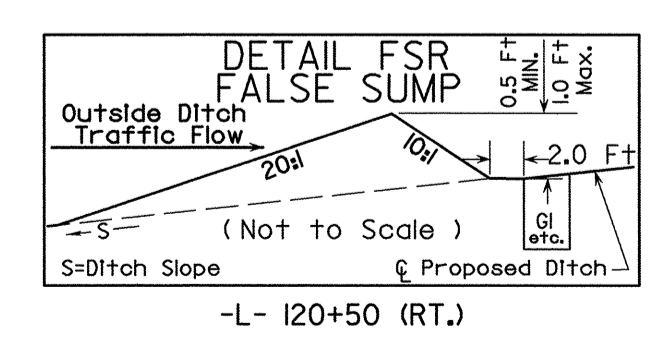
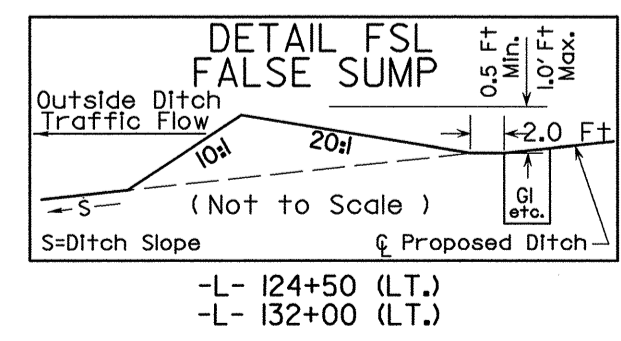
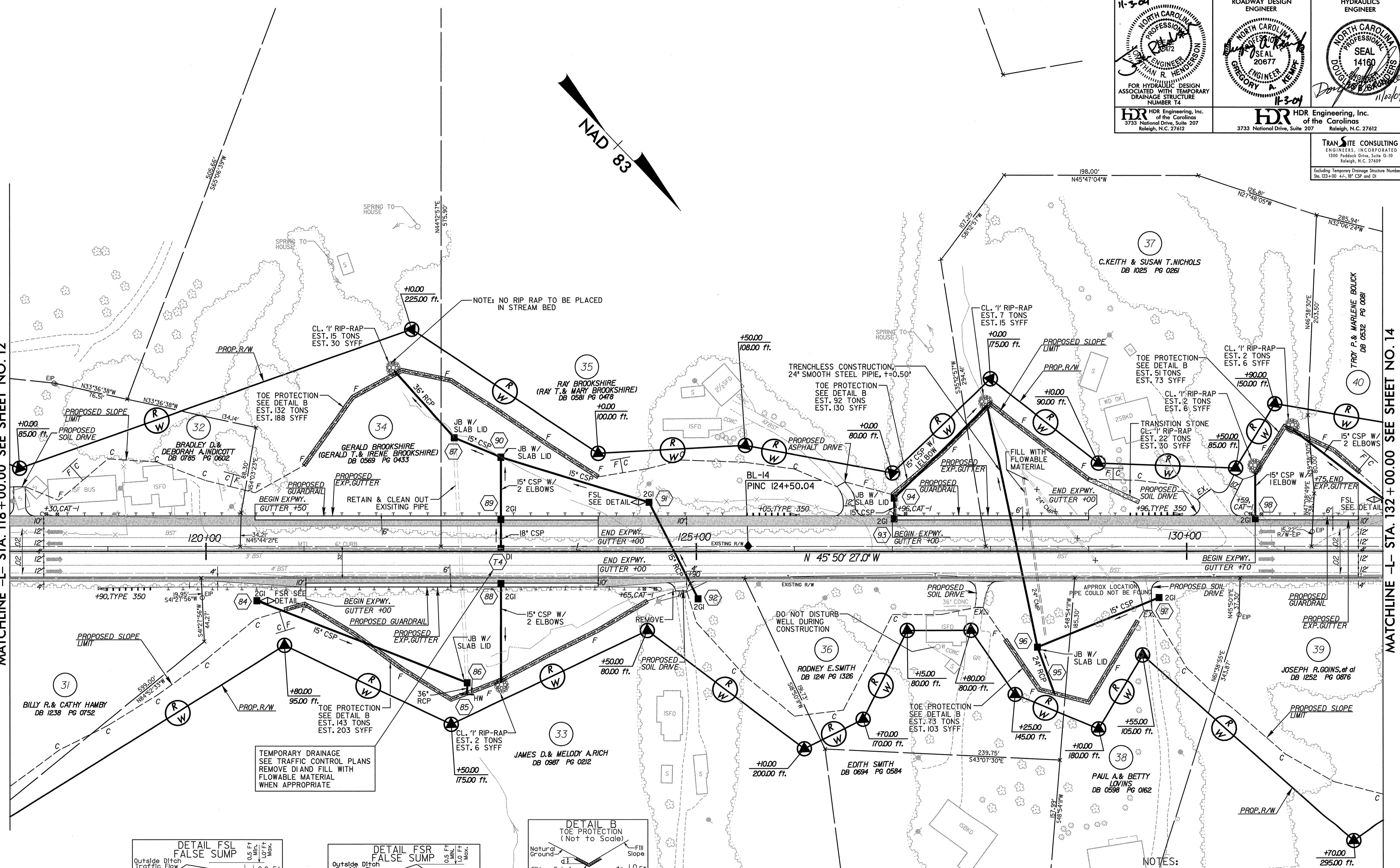
HDR Engineering, Inc. of the Carolinas
 3733 National Drive, Suite 207 Raleigh, N.C. 27612

TRAN SITE CONSULTING ENGINEERS, INCORPORATED
 1300 Piedmont Drive, Suite G-10 Raleigh, N.C. 27609
 Including Temporary Drainage Structure Number T4 Sta. 123+00 to 4+18' CSP and DI



MATCHLINE -L- STA. 118 + 00.00 SEE SHEET NO. 12

MATCHLINE -L- STA. 132 + 00.00 SEE SHEET NO. 14



- NOTES:
1. DRIVEWAY RETURN RADII ARE 10' UNLESS OTHERWISE SHOWN
 2. ALL CSP WILL BE ROD LUG AND GASKET CONNECTOR
 3. ALL U/G TELEPHONE LOCATED AS MARKED BY PRO-MARK ON JULY 17 AND 18,2000
 4. NO RIP RAP TO BE PLACED IN STREAM BED/CREEK BOTTOM

REFERENCES:
FOR -L- PROFILE SEE SHEET 41

REVISIONS

8/17/99

11/03/2004
06:28:52 PM
C:\p02571\p02571.dwg