

TRANSITE CONSULTING
ENGINEERS, INCORPORATED
1300 Parkwood Drive, Suite G-10
Raleigh, N.C. 27609

RW SHEET NO. 20

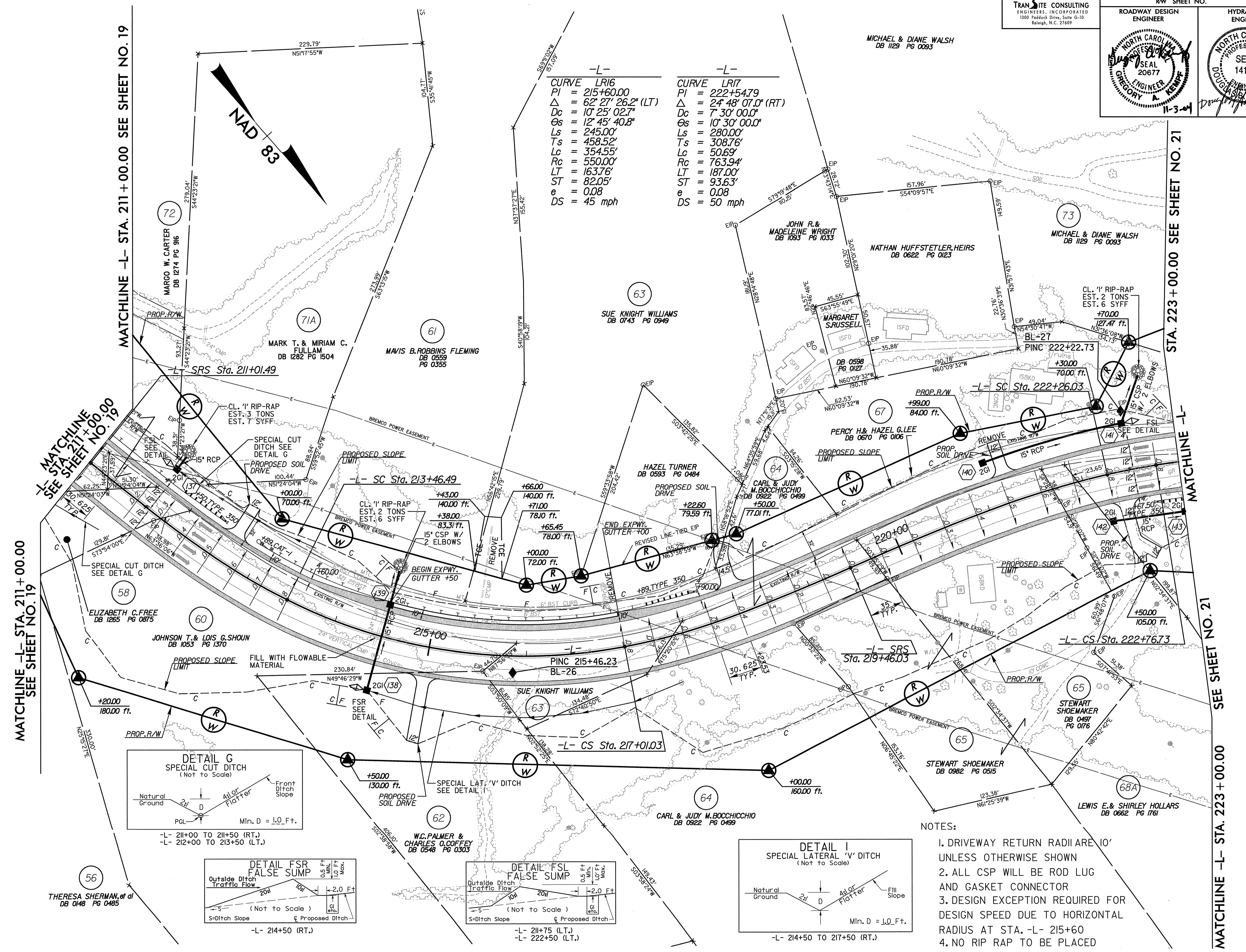
ROADWAY DESIGN ENGINEER
MICHAEL & DIANE WALSH
DB 1129 PG 0093

HYDRAULICS ENGINEER
MICHAEL & DIANE WALSH
DB 1129 PG 0093

Professional Engineer Seal: Gregory A. Kempf, No. 20677, State of North Carolina, expires 11-3-24.

Professional Engineer Seal: Douglas Saunders, No. 14160, State of North Carolina, expires 11-2-24.

-L-		-L-	
CURVE	LR16	CURVE	LR17
PI	= 215+60.00	PI	= 222+54.79
Δ	= 62° 27' 26.2" (LT)	Δ	= 24° 48' 07.0" (RT)
Dc	= 10' 25' 02.7"	Dc	= 7' 30' 00.0"
Θs	= 12° 45' 40.8"	Θs	= 10' 30' 00.0"
Ls	= 245.00'	Ls	= 280.00'
Ts	= 458.52'	Ts	= 308.76'
Lc	= 354.55'	Lc	= 50.69'
Rc	= 550.00'	Rc	= 763.94'
LT	= 163.76'	LT	= 187.00'
ST	= 82.05'	ST	= 93.63'
e	= 0.08	e	= 0.08
DS	= 45 mph	DS	= 50 mph



- NOTES:
1. DRIVEWAY RETURN RADII ARE 10' UNLESS OTHERWISE SHOWN
 2. ALL CSP WILL BE ROD LUG AND GASKET CONNECTOR
 3. DESIGN EXCEPTION REQUIRED FOR DESIGN SPEED DUE TO HORIZONTAL RADIUS AT STA. -L- 215+60
 4. NO RIP RAP TO BE PLACED IN STREAM BED/CREEK BOTTOM

REFERENCES:
FOR -L- PROFILE SEE SHEET 48

REVISIONS

8/17/95
10/28/2004
9:53:25 AM
54362578