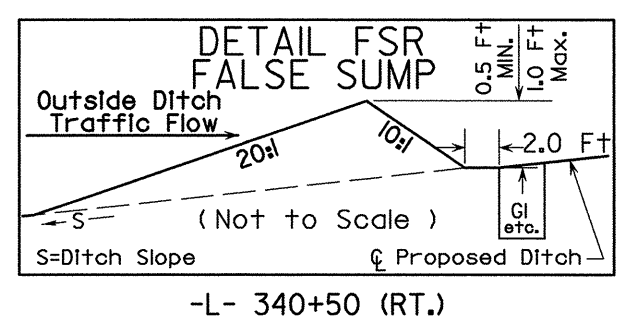
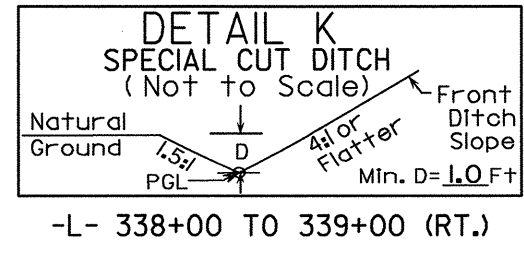
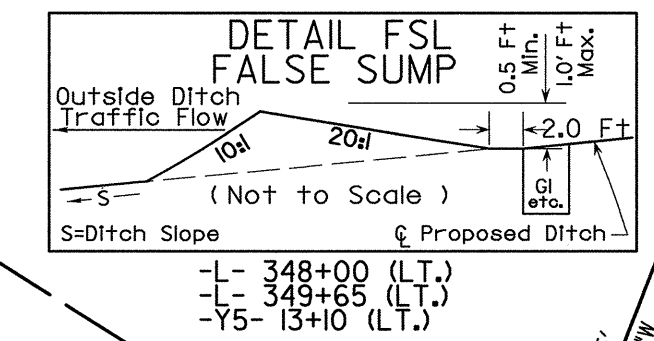
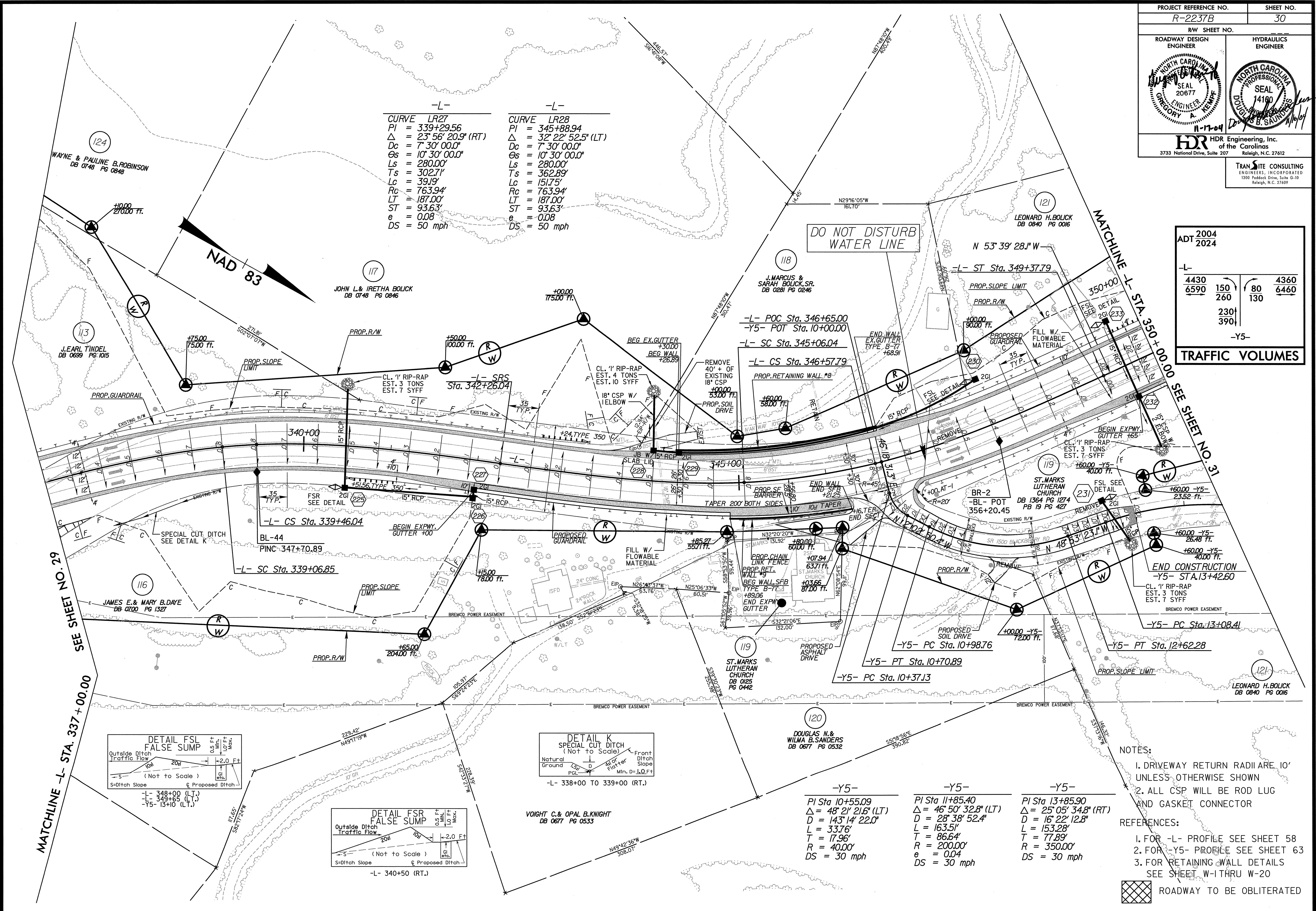


-L-		-L-	
CURVE	LR27	CURVE	LR28
PI	= 339+29.56	PI	= 345+88.94
Δ	= 23° 56' 20.9" (RT)	Δ	= 32° 22' 52.5" (LT)
Dc	= 7° 30' 00.0"	Dc	= 7° 30' 00.0"
Θs	= 10° 30' 00.0"	Θs	= 10° 30' 00.0"
Ls	= 280.00'	Ls	= 280.00'
Ts	= 302.71'	Ts	= 362.89'
Lc	= 39.91'	Lc	= 151.75'
Rc	= 763.94'	Rc	= 763.94'
LT	= 187.00'	LT	= 187.00'
ST	= 93.63'	ST	= 93.63'
e	= 0.08	e	= 0.08
DS	= 50 mph	DS	= 50 mph

ADT 2004
ADT 2024

4430	150	4360
6590	260	6460
	230	
	390	
		-Y5-

TRAFFIC VOLUMES



-Y5-	-Y5-	-Y5-
PI Sta 10+55.09	PI Sta 11+85.40	PI Sta 13+85.90
Δ = 48° 21' 21.6" (LT)	Δ = 46° 50' 32.8" (LT)	Δ = 25° 05' 34.8" (RT)
D = 143' 14' 22.0"	D = 28' 38' 52.4"	D = 16' 22' 12.8"
L = 33.76'	L = 163.51'	L = 153.28'
T = 17.96'	T = 86.64'	T = 77.89'
R = 40.00'	R = 200.00'	R = 350.00'
DS = 30 mph	e = 0.04	DS = 30 mph

- NOTES:
- DRIVEWAY RETURN RADII ARE 10' UNLESS OTHERWISE SHOWN
 - ALL CSP WILL BE ROD LUG AND GASKET CONNECTOR
- REFERENCES:
- FOR -L- PROFILE SEE SHEET 58
 - FOR -Y5- PROFILE SEE SHEET 63
 - FOR RETAINING WALL DETAILS SEE SHEET W-1 THRU W-20
- ROADWAY TO BE OBLITERATED

8/17/99
 11/16/2004
 12/15/22 PM