

ROADWAY DESIGN ENGINEER GREGORY A. KEMPE NORTH CAROLINA PROFESSIONAL SEAL 20677 11-3-04	HYDRAULICS ENGINEER DOUGLAS B. BRIDGES NORTH CAROLINA PROFESSIONAL SEAL 14160 11/02/04
--	---

HDR Engineering, Inc.
of the Carolinas
3733 National Drive, Suite 207
Raleigh, N.C. 27612

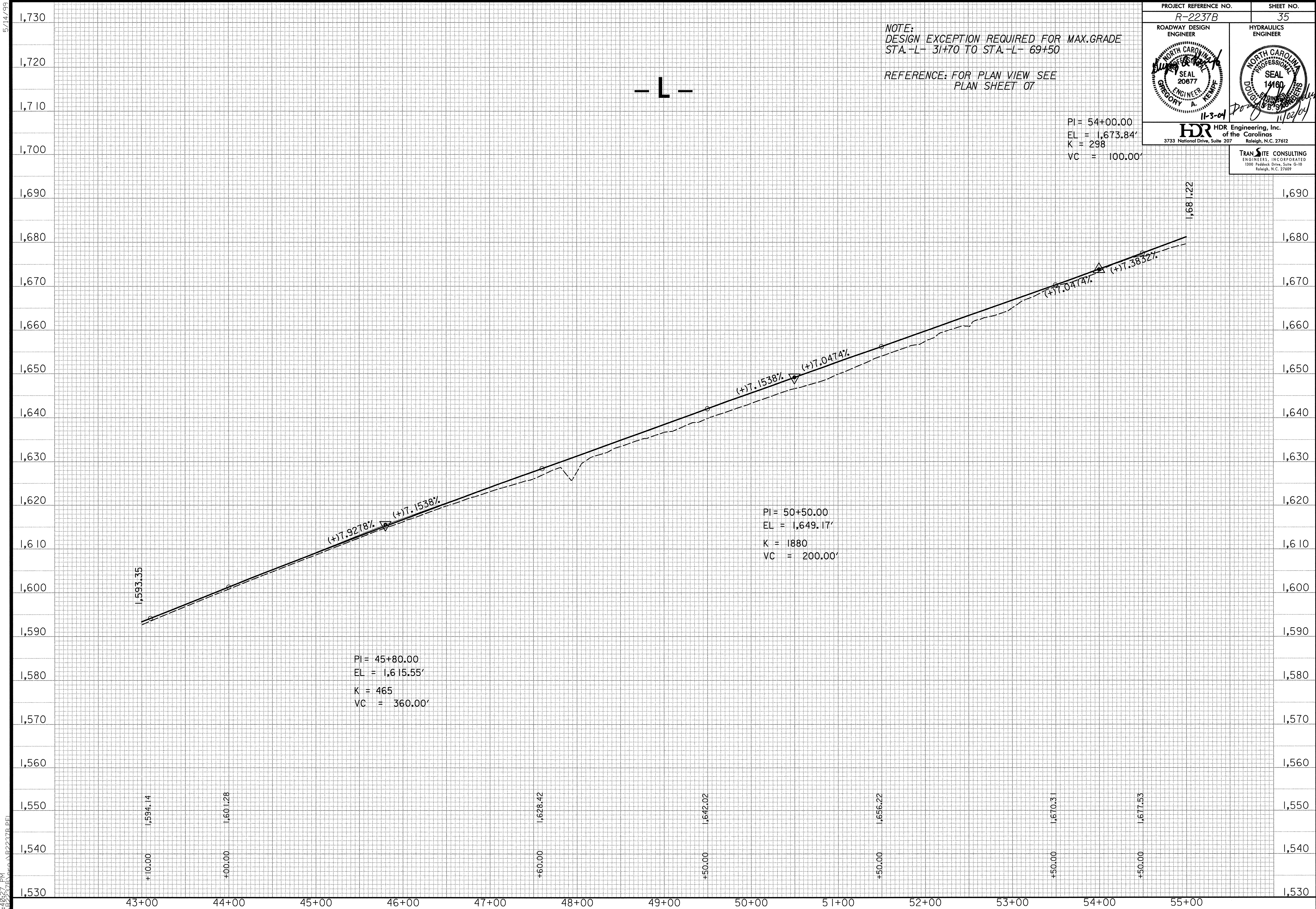
TRAN SITE CONSULTING
ENGINEERS, INCORPORATED
1300 Piedmont Drive, Suite G-10
Raleigh, N.C. 27609

NOTE:
DESIGN EXCEPTION REQUIRED FOR MAX.GRADE
STA.-L- 31+70 TO STA.-L- 69+50

REFERENCE: FOR PLAN VIEW SEE
PLAN SHEET 07

PI = 54+00.00
EL = 1,673.84'
K = 298
VC = 100.00'

- L -



5/14/99
 11/02/2004
 02:24:57 PM
 R:\R2237B\Drawings\Profile\BR2237B.PE1