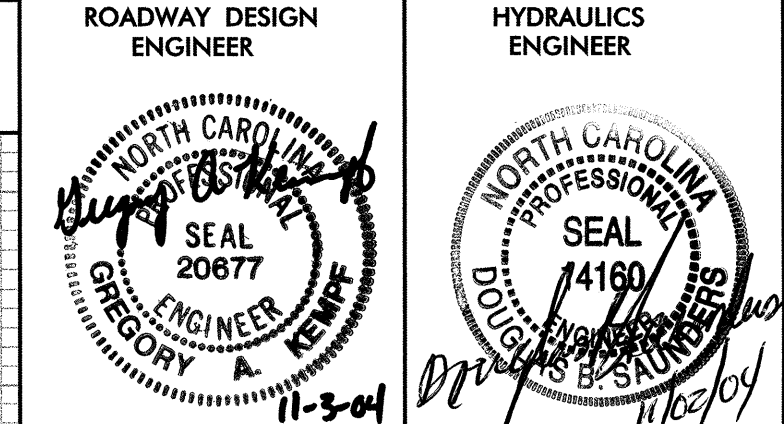
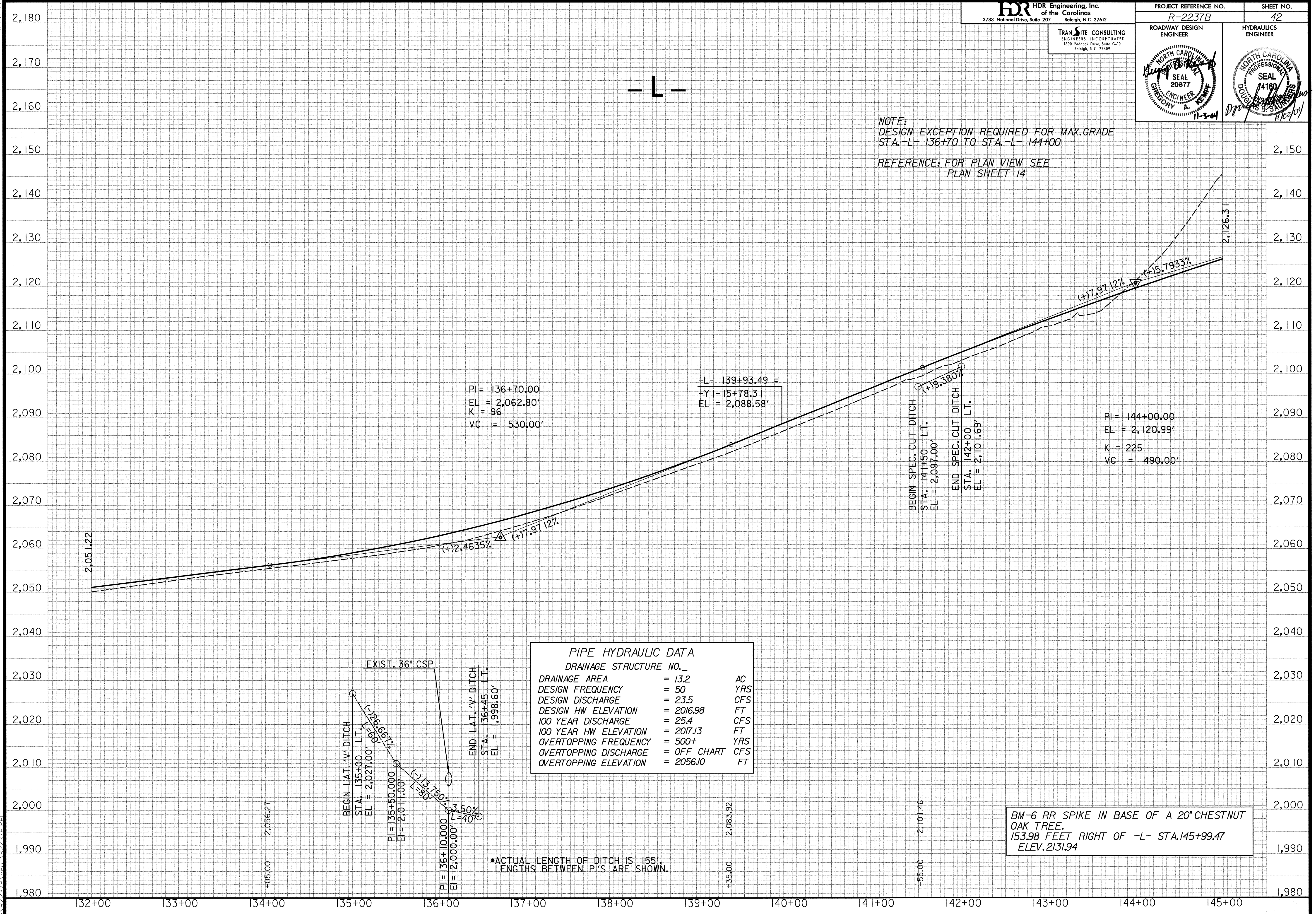


5/14/99

TRANSITE CONSULTING ENGINEERS, INCORPORATED
1300 Piedmont Drive, Suite G-10 Raleigh, N.C. 27609



NOTE:
DESIGN EXCEPTION REQUIRED FOR MAX.GRADE
STA. -L- 136+70 TO STA. -L- 144+00
REFERENCE: FOR PLAN VIEW SEE
PLAN SHEET 14

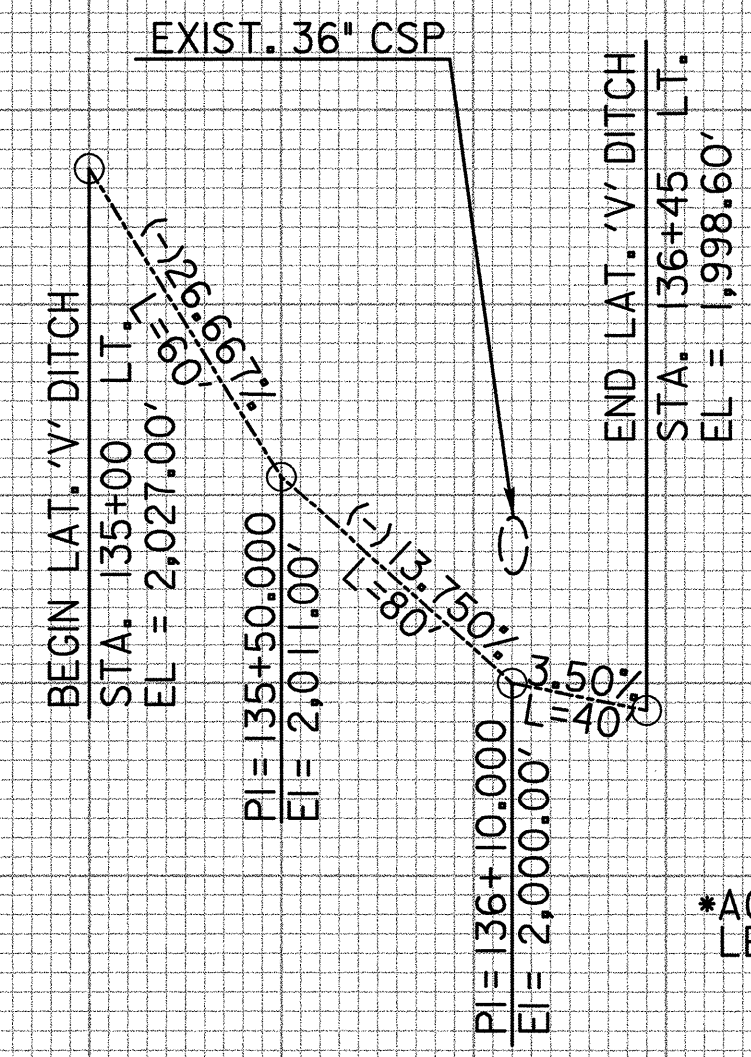


PI = 136+70.00
EL = 2,062.80'
K = 96
VC = 530.00'

-L- 139+93.49 =
+YI- 15+78.31
EL = 2,088.58'

PI = 144+00.00
EL = 2,120.99'
K = 225
VC = 490.00'

PIPE HYDRAULIC DATA	
DRAINAGE STRUCTURE NO. _	
DRAINAGE AREA	= 13.2 AC
DESIGN FREQUENCY	= 50 YRS
DESIGN DISCHARGE	= 23.5 CFS
DESIGN HW ELEVATION	= 2016.98 FT
100 YEAR DISCHARGE	= 25.4 CFS
100 YEAR HW ELEVATION	= 2017.13 FT
OVERTOPPING FREQUENCY	= 500+ YRS
OVERTOPPING DISCHARGE	= OFF CHART CFS
OVERTOPPING ELEVATION	= 2056.10 FT



BM-6 RR SPIKE IN BASE OF A 20" CHESTNUT OAK TREE.
153.98 FEET RIGHT OF -L- STA.145+99.47
ELEV.2131.94

11/02/2004 10:24:50 AM
B:\R2237B\Drawings\B2237B.PLT