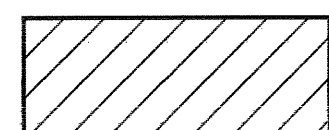


PROJECT REFERENCE NO. R-2237B	SHEET NO. EC-12/CONST II
RW SHEET NO.	
ROADWAY DESIGN ENGINEER	HYDRAULICS ENGINEER
42104	ADDED PLUS AND DISTANCES AND EIP'S

 ENVIRONMENTALLY SENSITIVE AREA
SEE PROJECT SPECIAL PROVISIONS

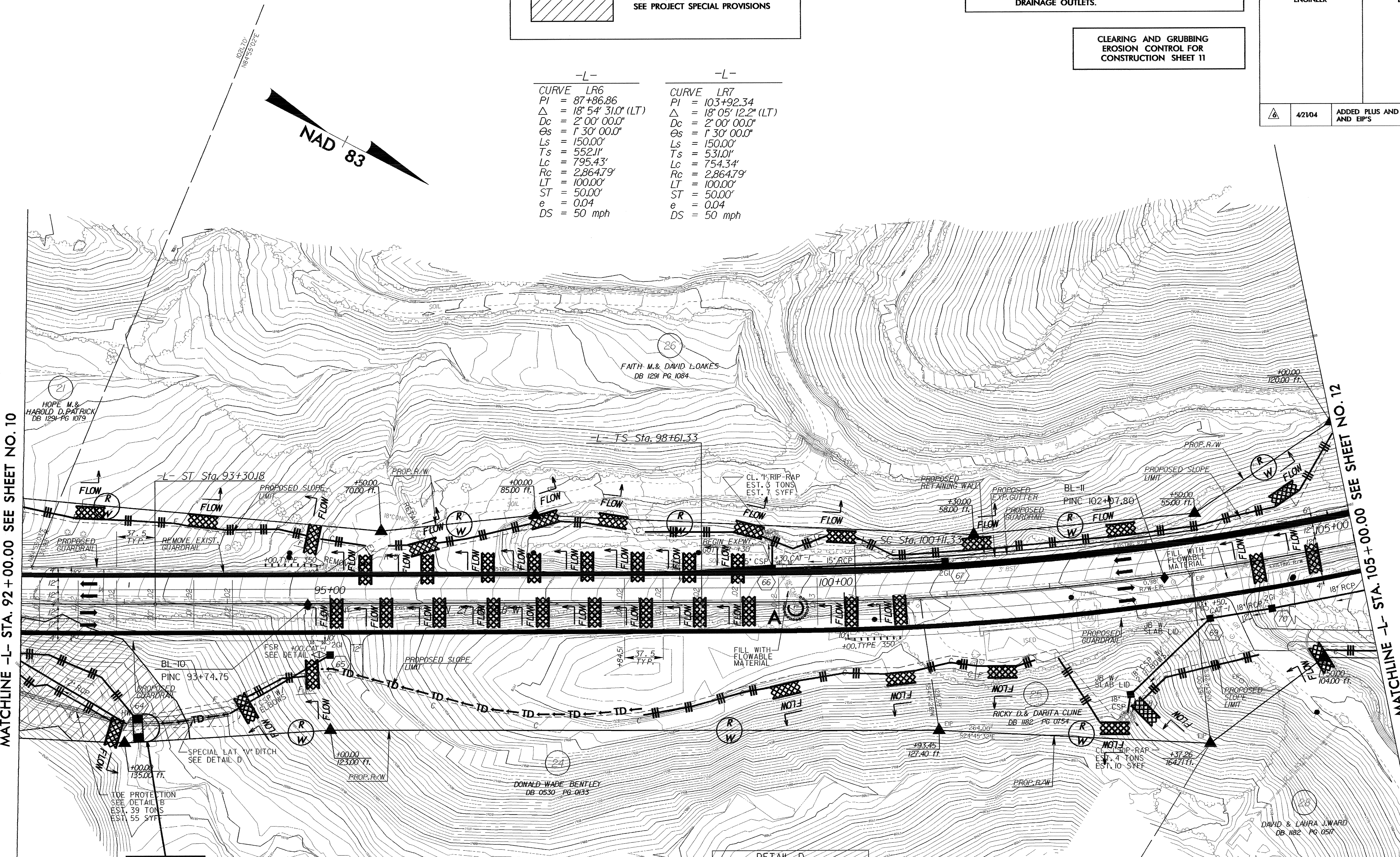
NOTE:
PLACE TEMPORARY ROCK SEDIMENT DAMS TYPE-B AND TEMPORARY ROCK SILT CHECKS TYPE-A AT DRAINAGE OUTLETS.

CLEARING AND GRUBBING
EROSION CONTROL FOR
CONSTRUCTION SHEET 11

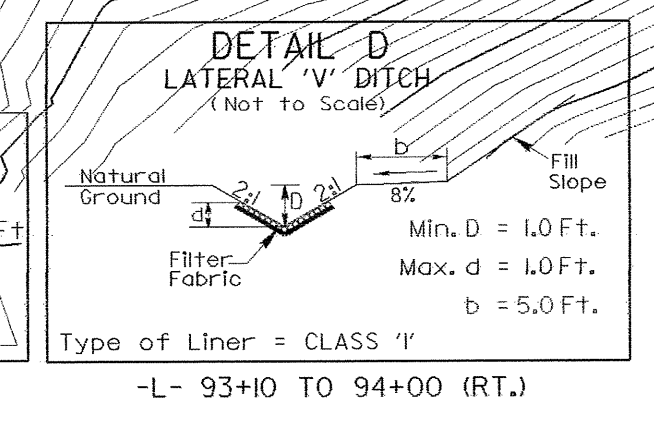
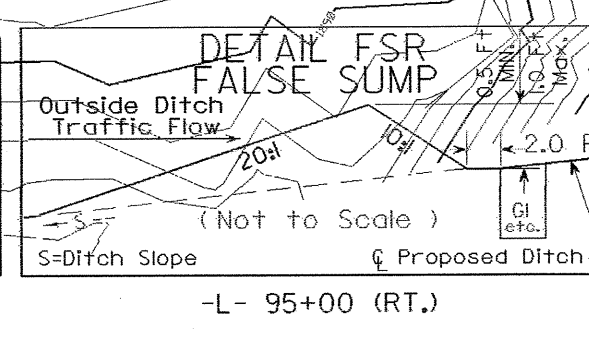
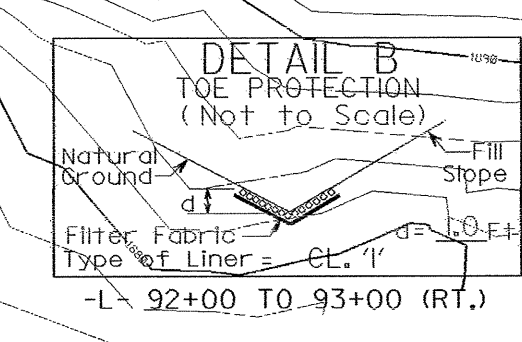
-L-	-L-
CURVE LR6	CURVE LR7
PI = 87+86.86	PI = 103+92.34
$\Delta = 18^\circ 54' 31.0"$ (LT)	$\Delta = 18^\circ 05' 12.2"$ (LT)
Dc = 2' 00" 00.0"	Dc = 2' 00" 00.0"
$\Theta_s = 1^\circ 30' 00.0"$	$\Theta_s = 1^\circ 30' 00.0"$
Ls = 150.00'	Ls = 150.00'
Ts = 552.11'	Ts = 531.01'
Lc = 795.43'	Lc = 754.34'
Rc = 2,864.79'	Rc = 2,864.79'
LT = 100.00'	LT = 100.00'
ST = 50.00'	ST = 50.00'
e = 0.04	e = 0.04
DS = 50 mph	DS = 50 mph

MATCHLINE -L- STA. 92+00.00 SEE SHEET NO. 10

MATCHLINE -L- STA. 105+00.00 SEE SHEET NO. 12



**35 x 17 x 3
4' weir**



NOTES:
1. DRIVEWAY RETURN RADII ARE 10' UNLESS OTHERWISE SHOWN
2. ALL CSP WILL BE ROD LUG AND GASKET CONNECTOR

REFERENCES:
FOR -L- PROFILE SEE SHEET 39