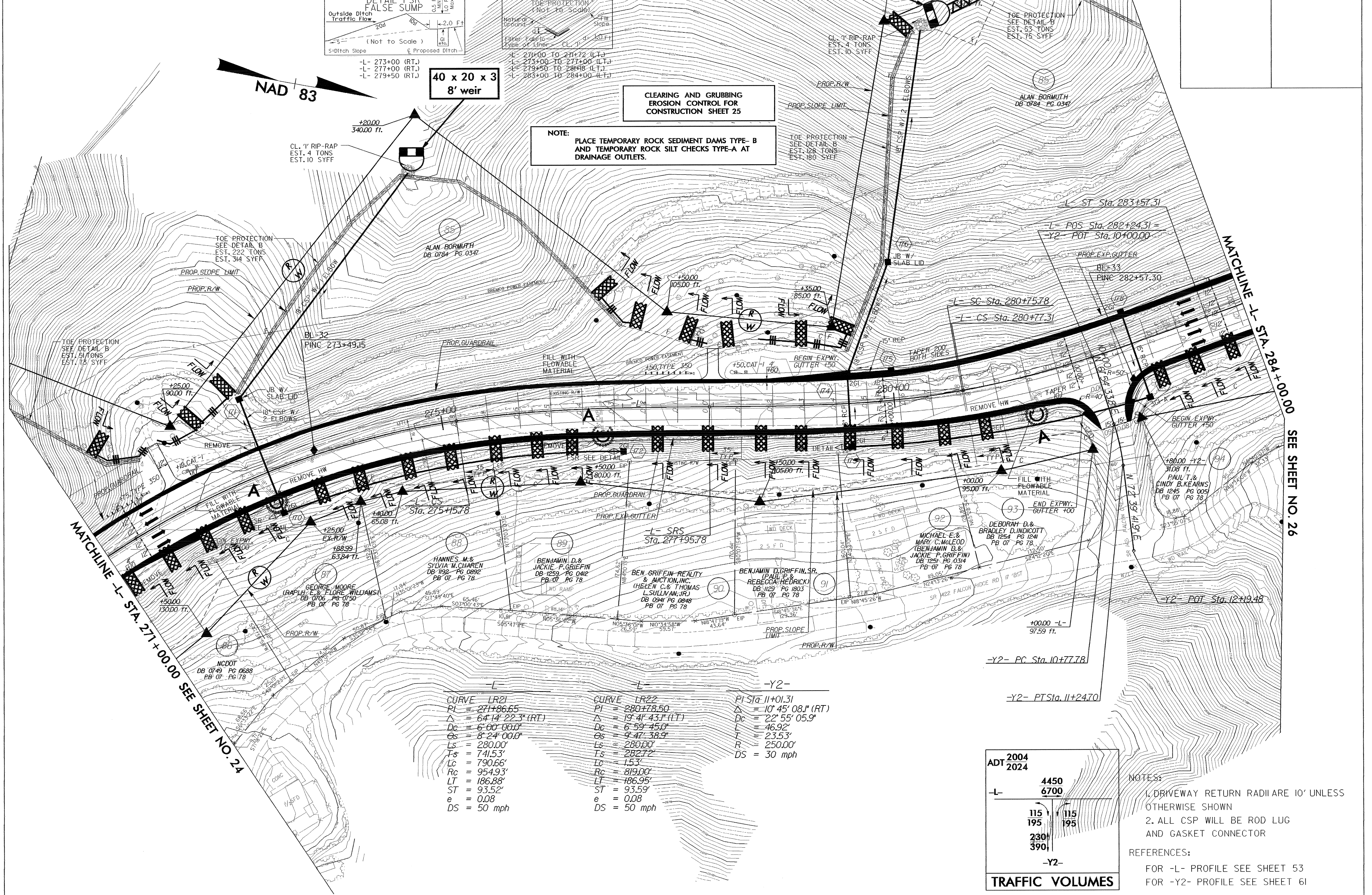


81503	ADDED BREMCO POWER EASEMENT
111203	ADJUSTED ROW ON PARCELS 86 THRU PARCEL 94
42104	NAME CHANGE PARCEL 90, 91, 92 ADDED DRIVE PARCEL 85

PROJECT REFERENCE NO. R-2237B	SHEET NO. EC-26/CONST 25
ROADWAY DESIGN ENGINEER	HYDRAULICS ENGINEER



CURVE	LR21	CURVE	LR22	-Y2-
PI	= 271+86.65	PI	= 280+78.50	PI Sta 11+01.31
Δ	= 64° 14' 22.3" (RT)	Δ	= 19° 41' 43.1" (LT)	Δ = 10° 45' 08.1" (RT)
Dc	= 6' 00' 00.0"	Dc	= 6' 59' 45.0"	Dc = 22' 55' 05.9"
Os	= 8' 24' 00.0"	Os	= 9' 47' 38.9"	L = 46.92'
Ls	= 280.00'	Ls	= 280.00'	T = 23.53'
Ts	= 741.53'	Ts	= 282.72'	R = 250.00'
Lc	= 790.66'	Lc	= 153'	DS = 30 mph
Rc	= 954.93'	Rc	= 819.00'	
LT	= 186.88'	LT	= 186.96'	
ST	= 93.52'	ST	= 93.59'	
e	= 0.08	e	= 0.08	
DS	= 50 mph	DS	= 50 mph	

NOTES:

1. DRIVEWAY RETURN RADII ARE 10' UNLESS OTHERWISE SHOWN
2. ALL CSP WILL BE ROD LUG AND GASKET CONNECTOR

REFERENCES:

FOR -L- PROFILE SEE SHEET 53
 FOR -Y2- PROFILE SEE SHEET 61