

| | |
|--------|--|
| 81503 | ADDED BREMCO POWER EASEMENT |
| 11/203 | ADJUSTED ROW ON PARCEL 85 THRU PARCEL 99, 123, & 101 |
| 42104 | NAME CHANGE PARCEL 101 ADDED DRIVE PARCEL 85 |

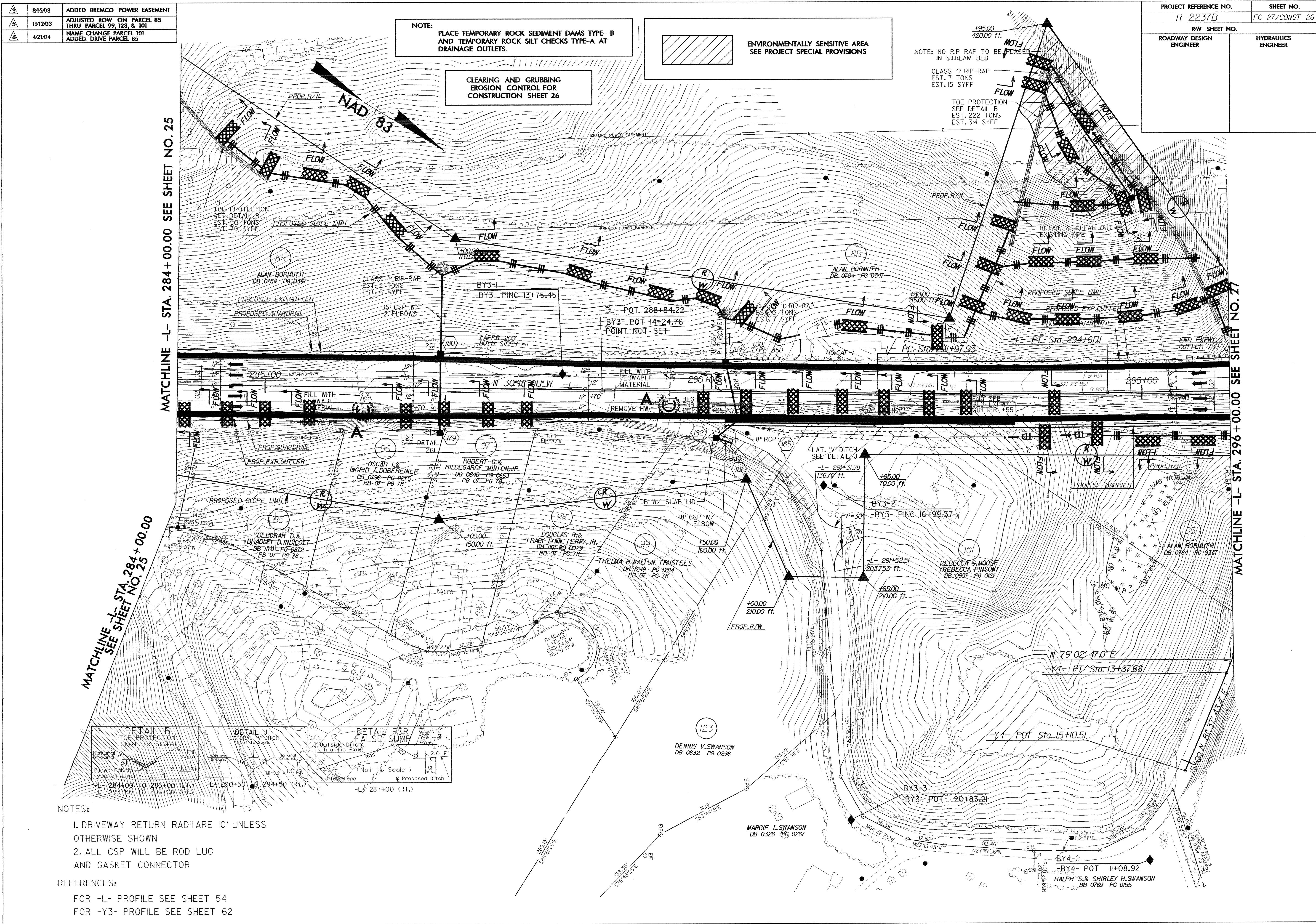
| | | | |
|----------------------------------|--|-----------------------------|--|
| PROJECT REFERENCE NO. R-2237B | | SHEET NO. EC-27/CONST 26 | |
| RW SHEET NO. | | | |
| ROADWAY DESIGN ENGINEER | | HYDRAULICS ENGINEER | |

NOTE: PLACE TEMPORARY ROCK SEDIMENT DAMS TYPE-B AND TEMPORARY ROCK SILT CHECKS TYPE-A AT DRAINAGE OUTLETS.

ENVIRONMENTALLY SENSITIVE AREA SEE PROJECT SPECIAL PROVISIONS

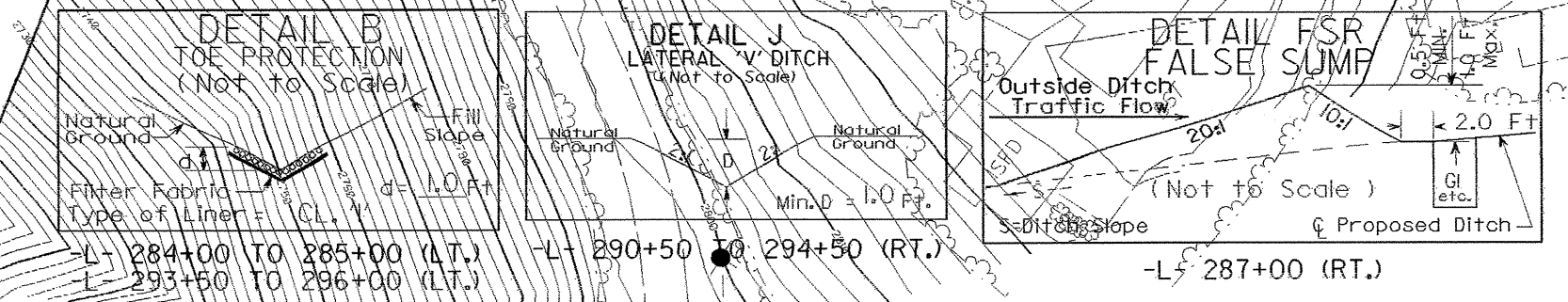
CLEARING AND GRUBBING EROSION CONTROL FOR CONSTRUCTION SHEET 26

NOTE: NO RIP RAP TO BE PLACED IN STREAM BED
CLASS '1' RIP-RAP EST. 7 TONS EST. 15 SYFF
TOE PROTECTION SEE DETAIL B EST. 222 TONS EST. 314 SYFF



MATCHLINE -L- STA. 284+00.00 SEE SHEET NO. 25

MATCHLINE -L- STA. 296+00.00 SEE SHEET NO. 27



- NOTES:
1. DRIVEWAY RETURN RADII ARE 10' UNLESS OTHERWISE SHOWN
 2. ALL CSP WILL BE ROD LUG AND GASKET CONNECTOR

- REFERENCES:
- FOR -L- PROFILE SEE SHEET 54
 - FOR -Y3- PROFILE SEE SHEET 62