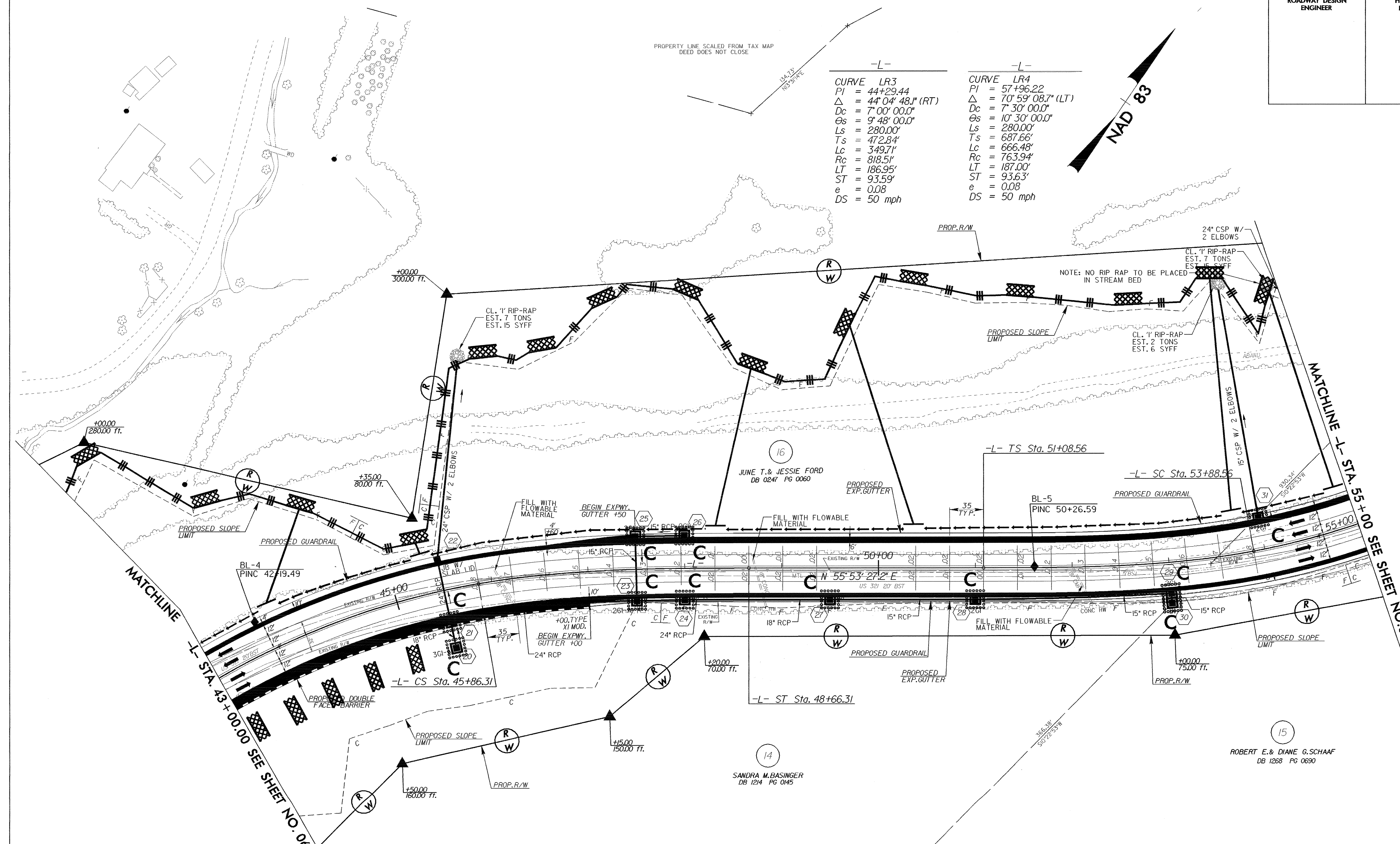
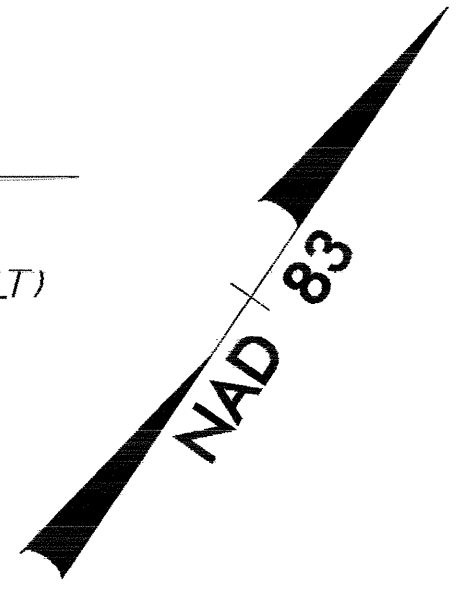


PROJECT REFERENCE NO. R-2237B	SHEET NO. EC-36/CONST 7
RW SHEET NO.	
ROADWAY DESIGN ENGINEER	HYDRAULICS ENGINEER



-L-		-L-	
CURVE	LR3	CURVE	LR4
PI	= 44+29.44	PI	= 57+96.22
Δ	= 44° 04' 48.1" (RT)	Δ	= 70° 59' 08.7" (LT)
Dc	= 7° 00' 00.0"	Dc	= 7° 30' 00.0"
Θs	= 9° 48' 00.0"	Θs	= 10° 30' 00.0"
Ls	= 280.00'	Ls	= 280.00'
Ts	= 472.84'	Ts	= 687.66'
Lc	= 349.71'	Lc	= 666.48'
Rc	= 818.51'	Rc	= 763.94'
LT	= 186.95'	LT	= 187.00'
ST	= 93.59'	ST	= 93.63'
e	= 0.08	e	= 0.08
DS	= 50 mph	DS	= 50 mph



NOTES:
 1. DRIVEWAY RETURN RADII ARE 10' UNLESS OTHERWISE SHOWN
 2. ALL CSP WILL BE ROD LUG AND GASKET CONNECTOR

REFERENCES:
 FOR -L- PROFILE SEE SHEET 35

MATCHLINE -L- STA. 55+00.00 SEE SHEET NO. 08

MATCHLINE -L- STA. 43+00.00 SEE SHEET NO. 06