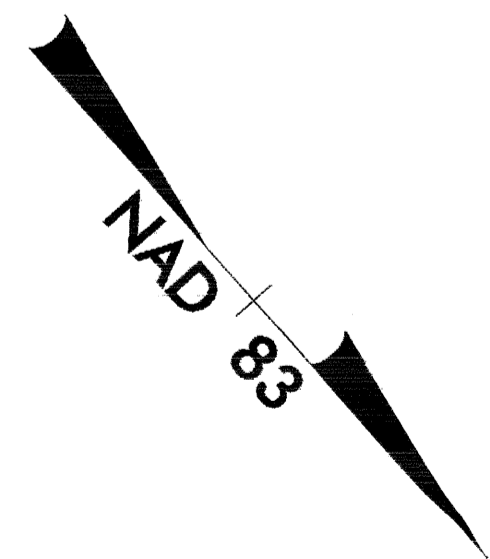
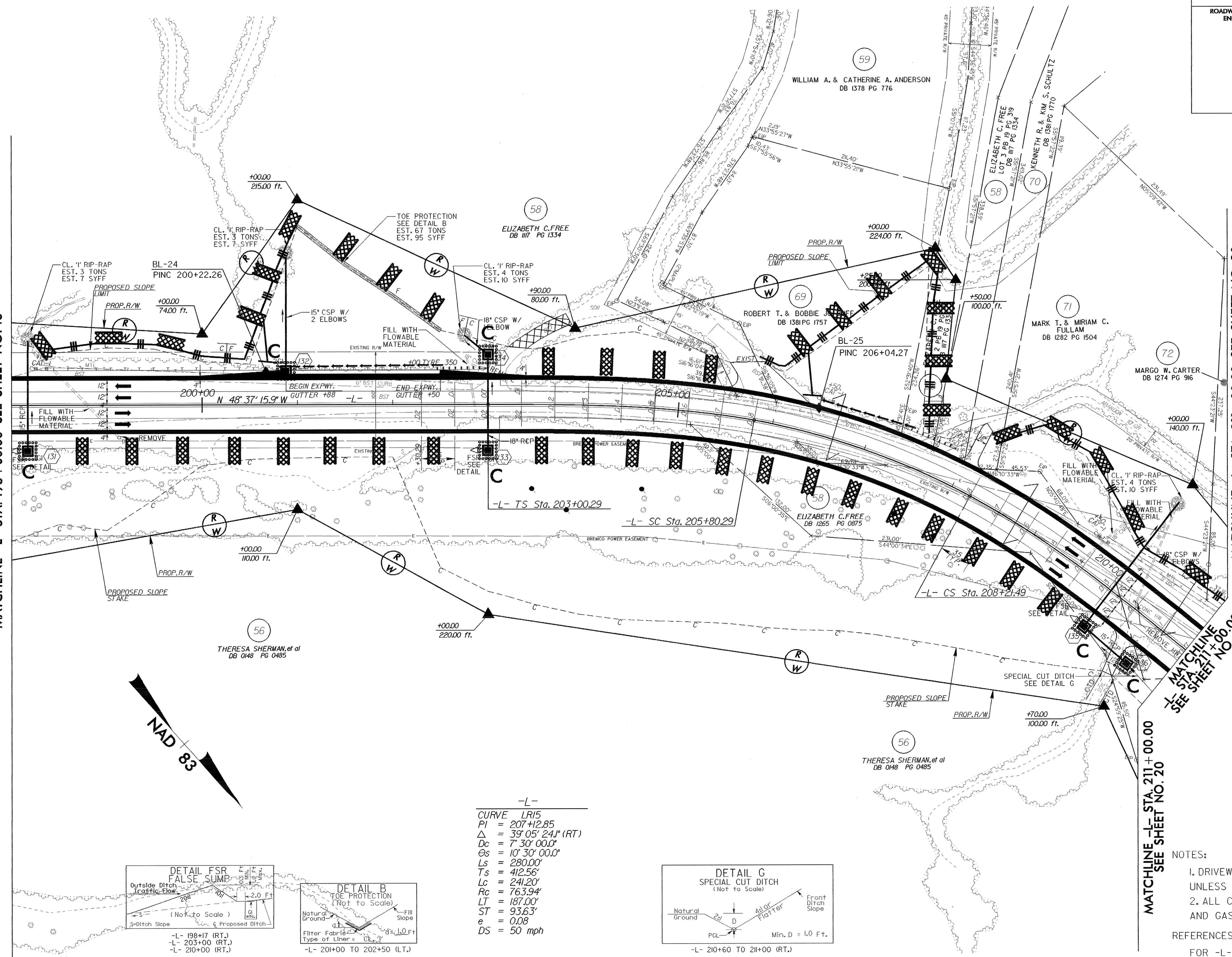


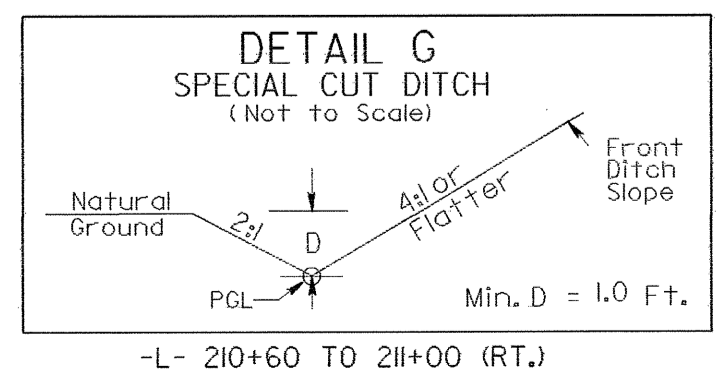
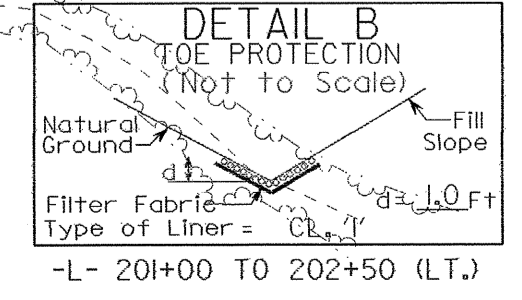
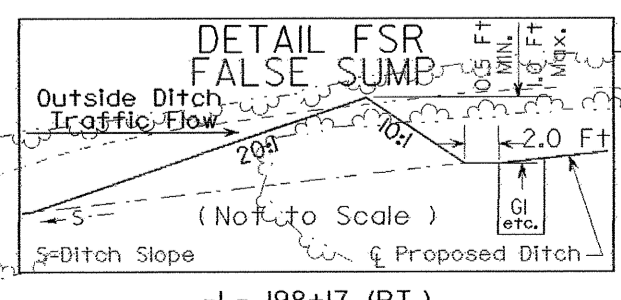
PROJECT REFERENCE NO.		SHEET NO.	
R-2237B		EC-48/CONST 19	
RW SHEET NO.			
ROADWAY DESIGN ENGINEER		HYDRAULICS ENGINEER	

MATCHLINE -L- STA. 198+00.00 SEE SHEET NO. 18

MATCHLINE -L- STA. 211+00.00 SEE SHEET NO. 20



-L-  
 CURVE LR15  
 PI = 207+12.85  
 $\Delta$  = 39° 05' 24.1" (RT)  
 Dc = 7' 30" 00.0"  
 $\theta_s$  = 10' 30" 00.0"  
 Ls = 280.00'  
 Ts = 412.56'  
 Lc = 241.20'  
 Rc = 763.94'  
 LT = 187.00'  
 ST = 93.63'  
 e = 0.08  
 DS = 50 mph



NOTES:  
 1. DRIVEWAY RETURN RADIARE 10' UNLESS OTHERWISE SHOWN  
 2. ALL CSP WILL BE ROD LUG AND GASKET CONNECTOR

REFERENCES:  
 FOR -L- PROFILE SEE SHEET 47

-L- 198+17 (RT.)  
 -L- 203+00 (RT.)  
 -L- 210+00 (RT.)

-L- 201+00 TO 202+50 (LT.)

-L- 210+60 TO 211+00 (RT.)