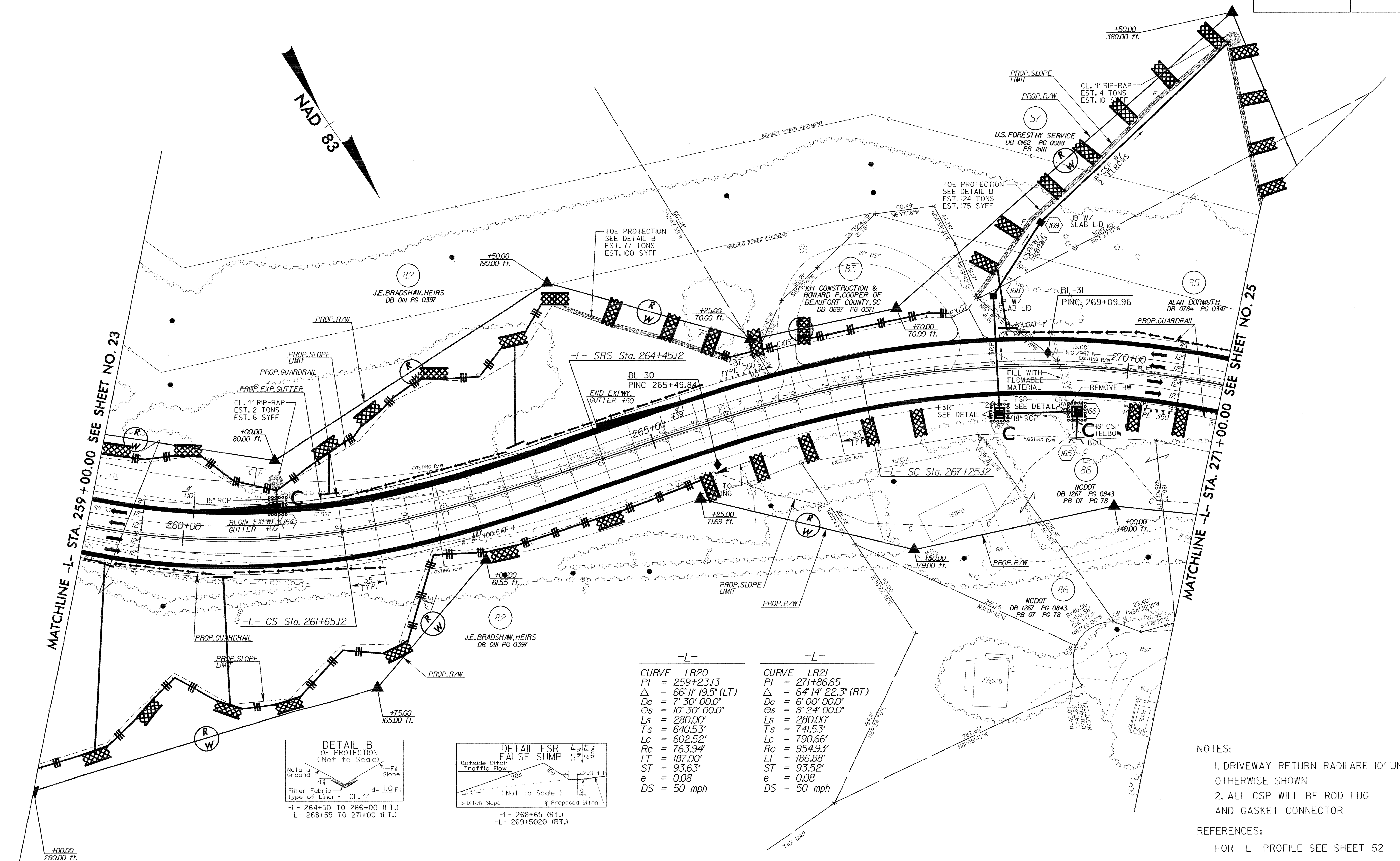
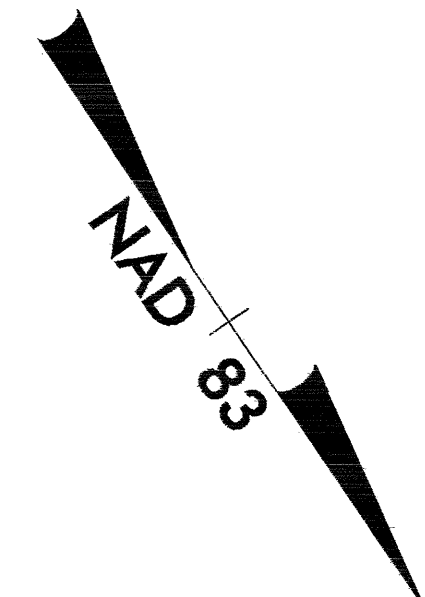


PROJECT REFERENCE NO. R-2237B		SHEET NO. EC-53/CONST 24	
RW SHEET NO.			
ROADWAY DESIGN ENGINEER		HYDRAULICS ENGINEER	

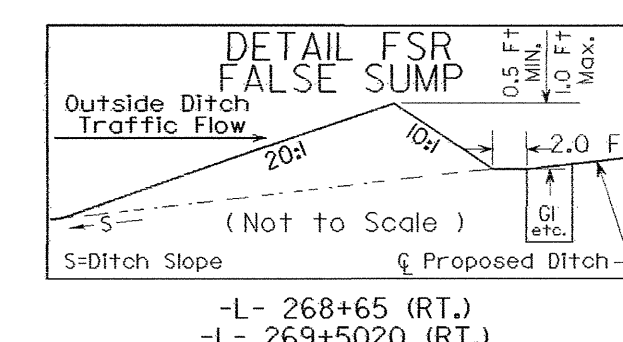
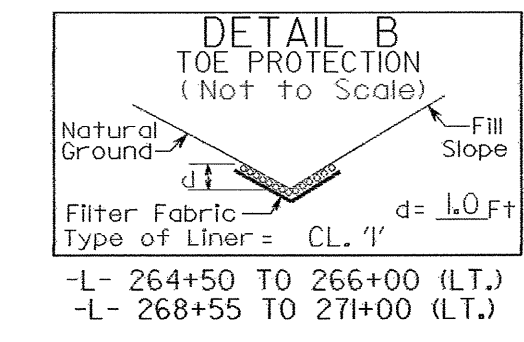


MATCHLINE -L- STA. 259+00.00 SEE SHEET NO. 23

MATCHLINE -L- STA. 271+00.00 SEE SHEET NO. 25



-L-		-L-	
CURVE	LR20	CURVE	LR21
PI	= 259+23.13	PI	= 271+86.65
Δ	= 66° 11' 19.5" (LT)	Δ	= 64° 14' 22.3" (RT)
Dc	= 7' 30' 00.0"	Dc	= 6' 00' 00.0"
Es	= 10' 30' 00.0"	Es	= 8' 24' 00.0"
Ls	= 280.00'	Ls	= 280.00'
Ts	= 640.53'	Ts	= 741.53'
Lc	= 602.52'	Lc	= 790.66'
Rc	= 763.94'	Rc	= 954.93'
LT	= 187.00'	LT	= 186.88'
ST	= 93.63'	ST	= 93.52'
e	= 0.08	e	= 0.08
DS	= 50 mph	DS	= 50 mph



- NOTES:
1. DRIVEWAY RETURN RADII ARE 10' UNLESS OTHERWISE SHOWN
 2. ALL CSP WILL BE ROD LUG AND GASKET CONNECTOR
- REFERENCES:
- FOR -L- PROFILE SEE SHEET 52