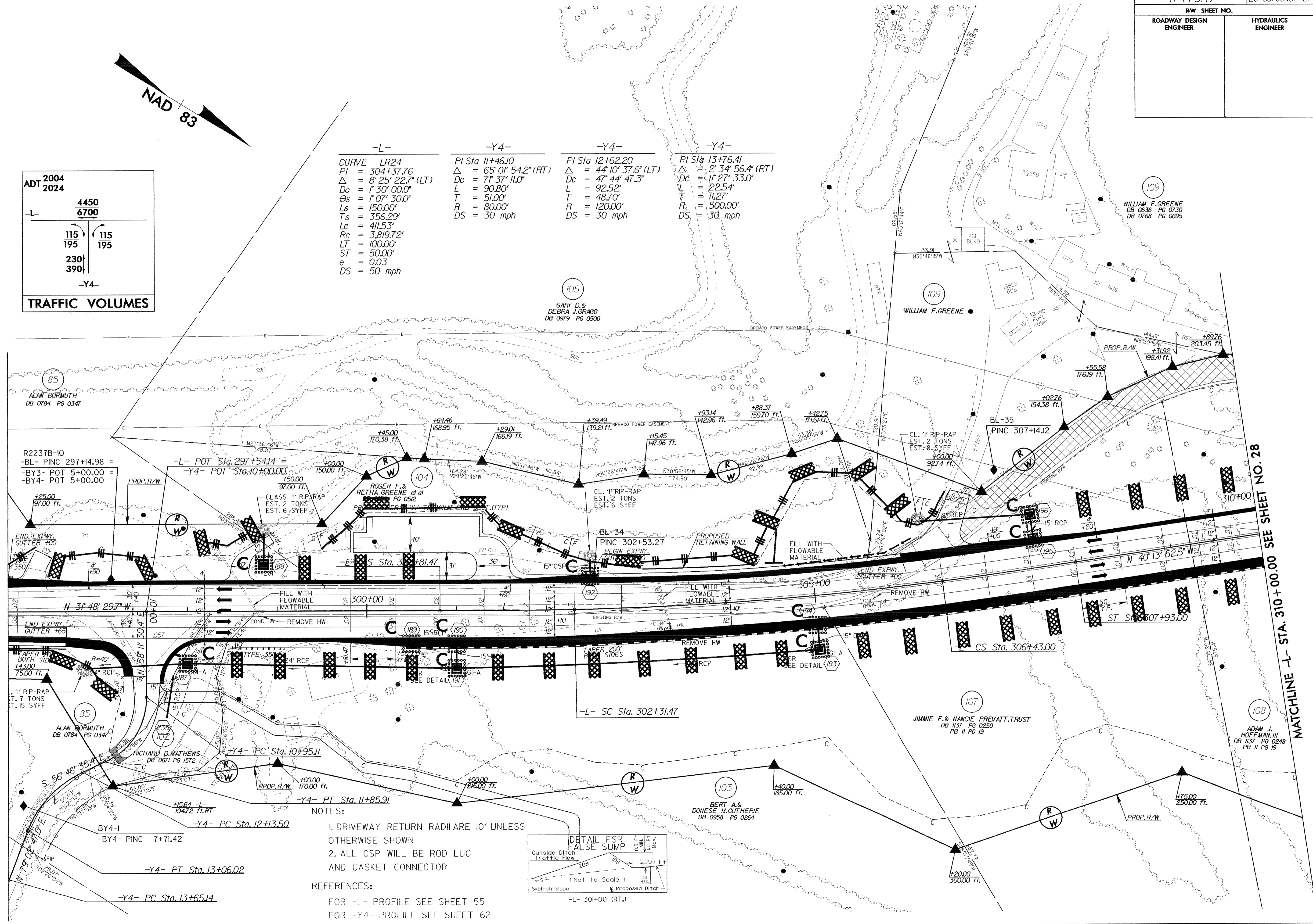


ADT	2004	4450
	2024	6700
-L-		
	115	115
	195	195
	230	390
	-Y4-	
TRAFFIC VOLUMES		

-L-	-Y4-	-Y4-	-Y4-
CURVE LR24	PI Sta 11+46.10	PI Sta 12+62.20	PI Sta 13+76.41
$\Delta = 304+37.76$	$\Delta = 65^{\circ}01'54.2"$ (RT)	$\Delta = 44^{\circ}10'37.6"$ (LT)	$\Delta = 2^{\circ}34'56.4"$ (RT)
$\Delta = 8^{\circ}25'22.7"$ (LT)	$Dc = 71^{\circ}37'11.0"$	$Dc = 47^{\circ}44'47.3"$	$Dc = 11^{\circ}27'33.0"$
$L = 1^{\circ}30'00.0"$	$L = 90.80'$	$L = 92.52'$	$L = 22.54'$
$\Theta_s = 1^{\circ}07'30.0"$	$T = 51.00'$	$T = 48.70'$	$T = 11.27'$
$Ls = 150.00'$	$R = 80.00'$	$R = 120.00'$	$R = 500.00'$
$Ts = 356.29'$	$DS = 30$ mph	$DS = 30$ mph	$DS = 30$ mph
$Lc = 411.53'$			
$Rc = 3,819.72'$			
$LT = 100.00'$			
$ST = 50.00'$			
$e = 0.03$			
$DS = 50$ mph			

MATCHLINE -L- STA. 296+00.00 SEE SHEET NO. 26

MATCHLINE -L- STA. 310+00.00 SEE SHEET NO. 28



NOTES:

1. DRIVEWAY RETURN RADII ARE 10' UNLESS OTHERWISE SHOWN
2. ALL CSP WILL BE ROD LUG AND GASKET CONNECTOR

REFERENCES:

FOR -L- PROFILE SEE SHEET 55
FOR -Y4- PROFILE SEE SHEET 62

