

042597
R:\11\10-AUG-2004_08:33\p-256c008_UC5-ut_psh.dgn
11/11/04 11:12:11 AM 15512121

METRIC

PROJECT REFERENCE NO. **R-2562D** SHEET NO. **UC-5**

DESIGNED BY: **MRB**

DRAWN BY: **MRB**

CHECKED BY: **RBW**

APPROVED BY: **RBW**

REVISED:

NORTH CAROLINA DEPARTMENT OF TRANSPORTATION

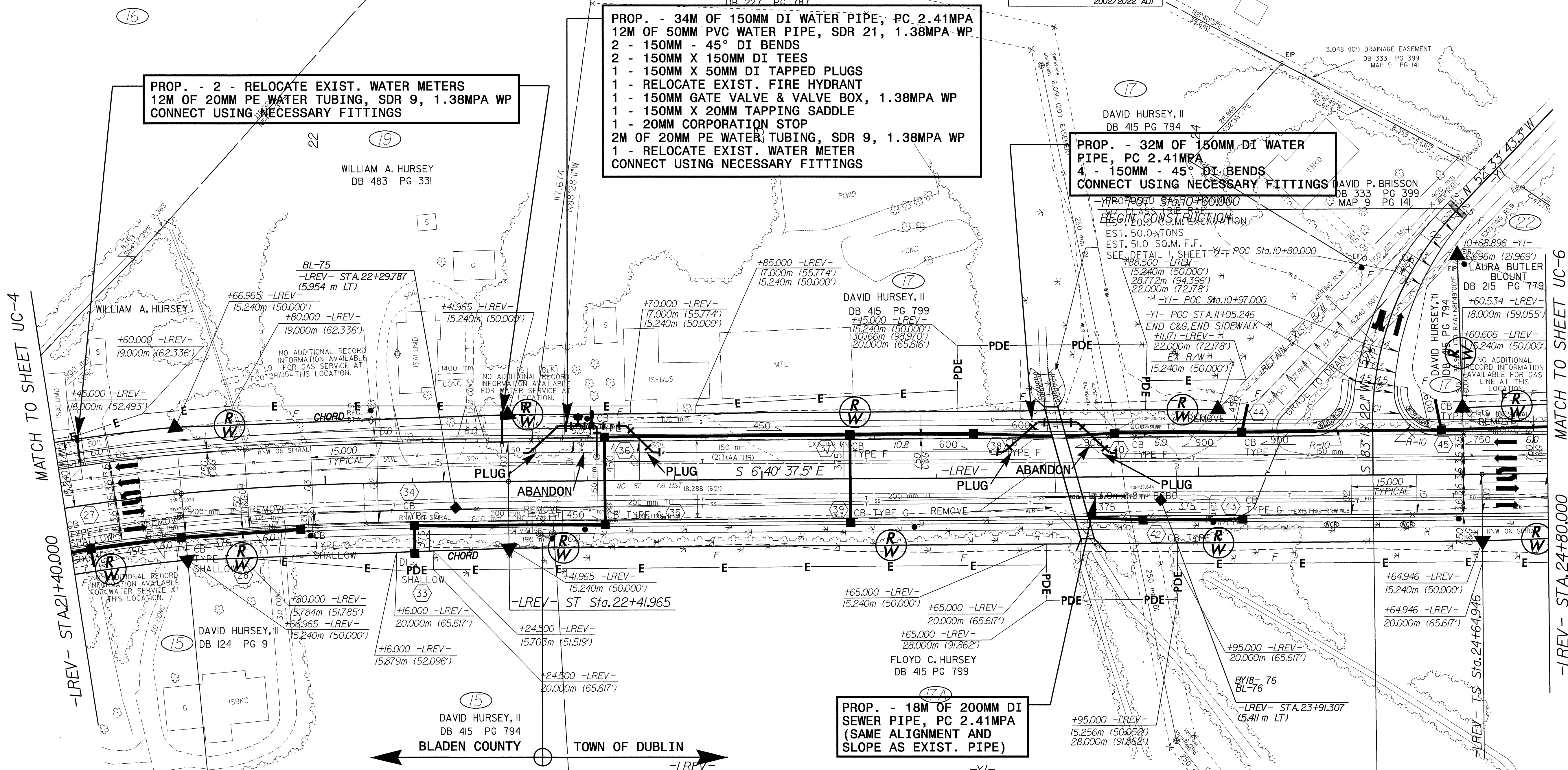
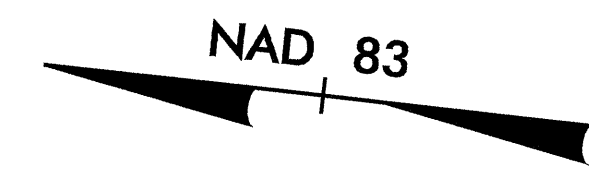
DESIGN SERVICES UNIT
PHONE: (919)250-4128
FAX: (919)250-4119

UTILITY CONSTRUCTION PLANS ONLY

SCALE: 5 0 10

5345 206 56 94 5130 8869
NC 87 -YI- 2002/2022 ADT

10157
ENGINEER
RONALD B. WILKINS



**PROP. - 2 - RELOCATE EXIST. WATER METERS
12M OF 20MM PE WATER TUBING, SDR 9, 1.38MPA WP
CONNECT USING NECESSARY FITTINGS**

**PROP. - 34M OF 150MM DI WATER PIPE, PC 2.41MPA
12M OF 50MM PVC WATER PIPE, SDR 21, 1.38MPA WP
2 - 150MM - 45° DI BENDS
2 - 150MM X 150MM DI TEES
1 - 150MM X 50MM DI TAPPED PLUGS
1 - RELOCATE EXIST. FIRE HYDRANT
1 - 150MM GATE VALVE & VALVE BOX, 1.38MPA WP
1 - 150MM X 20MM TAPPING SADDLE
1 - 20MM CORPORATION STOP
2M OF 20MM PE WATER TUBING, SDR 9, 1.38MPA WP
1 - RELOCATE EXIST. WATER METER
CONNECT USING NECESSARY FITTINGS**

**PROP. - 32M OF 150MM DI WATER PIPE, PC 2.41MPA
4 - 150MM - 45° DI BENDS
CONNECT USING NECESSARY FITTINGS**

**PROP. - 18M OF 200MM DI SEWER PIPE, PC 2.41MPA
(SAME ALIGNMENT AND SLOPE AS EXIST. PIPE)**

MATCH TO SHEET UC-4

MATCH TO SHEET UC-6

-LREV- STA.21+40.000

-LREV- STA.24+80.000

Pls Sta 19+27.520 Os = 4'52" 59.4" Ls = 75.0 LT = 50.019 ST = 25.017	PI Sta 20+61.908 Δ = 27'55" 37.1" (RT) L = 214.464 T = 109.407 R = 440.000 SE = .05	Pls Sta 21+91.982 Os = 4'52" 59.4" Ls = 75.0 LT = 50.019 ST = 25.017	-YI- PI Sta 10+89.020 Δ = 44'06" 54.5" (LT) L = 53.897 T = 28.364 R = 70.000 SE = .04
Pls Sta 25+04.971 Os = 6'15" 01.6" Ls = 60.0 LT = 40.025 ST = 20.023	PI Sta 26+08.758 Δ = 33'53" 57.0" (LT) L = 162.704 T = 83.811 R = 275.000 SE = .04	Pls Sta 27+07.673 Os = 6'15" 01.6" Ls = 60.0 LT = 40.025 ST = 20.023	

-LREV- CS Sta.21+66.965

-YI- POT Sta.21+26.195 =
-LREV- POT Sta.24+40.000