

PROJECT REFERENCE NO.	SHEET NO.
R-2562D	UC-7
DESIGNED BY: MRB	
DRAWN BY: MRB	
CHECKED BY: RBW	
APPROVED BY: RBW	
REVISOR:	NORTH CAROLINA DEPARTMENT OF TRANSPORTATION DESIGN SERVICES UNIT PHONE: (919) 250-4128 FAX: (919) 250-4119

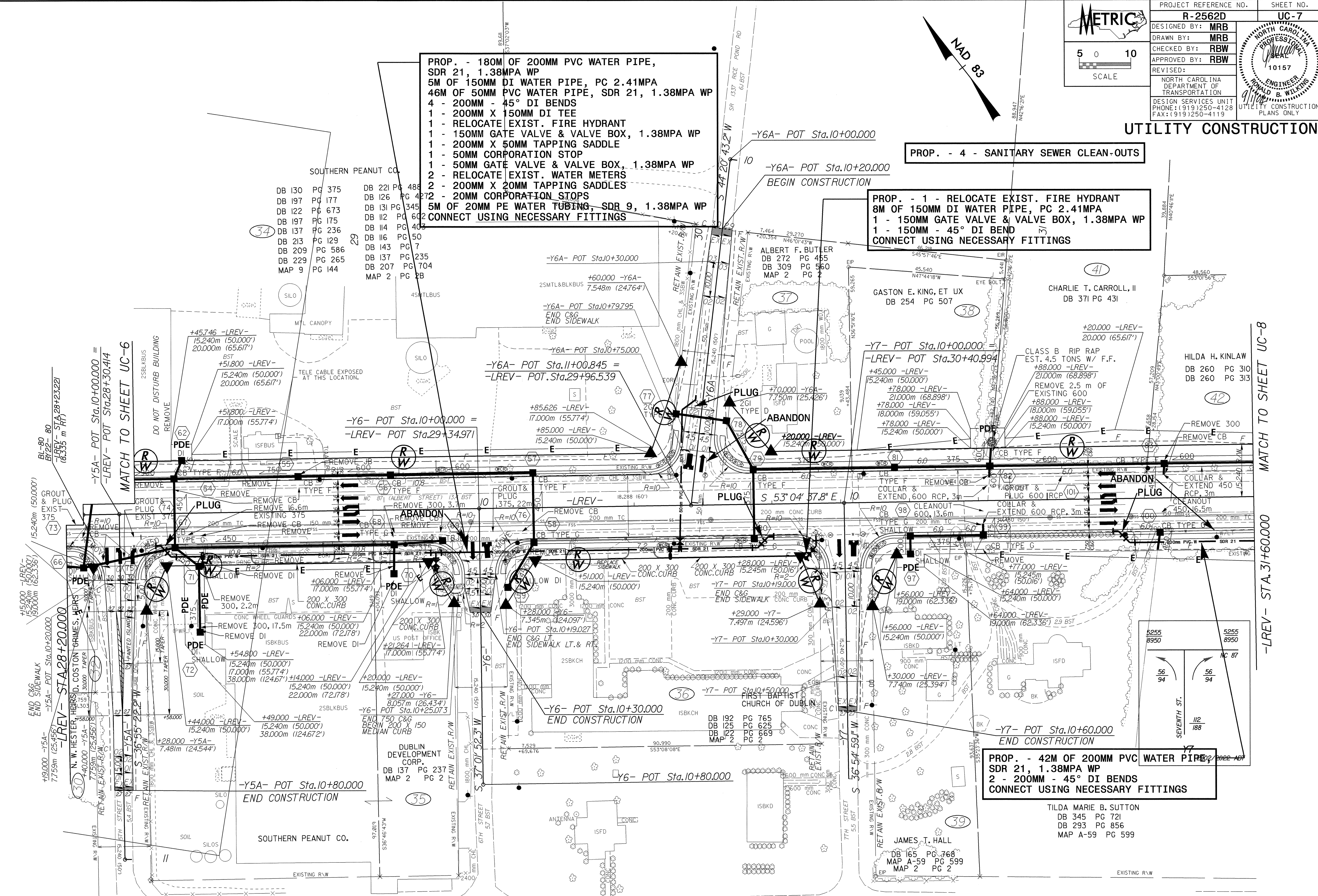
UTILITY CONSTRUCTION

PROP. - 180M OF 200MM PVC WATER PIPE, SDR 21, 1.38MPA WP
5M OF 150MM DI WATER PIPE, PC 2.41MPA
46M OF 50MM PVC WATER PIPE, SDR 21, 1.38MPA WP
4 - 200MM - 45° DI BENDS
1 - 200MM X 150MM DI TEE
1 - RELOCATE EXIST. FIRE HYDRANT
1 - 150MM GATE VALVE & VALVE BOX, 1.38MPA WP
1 - 200MM X 50MM TAPPING SADDLE
1 - 50MM CORPORATION STOP
1 - 50MM GATE VALVE & VALVE BOX, 1.38MPA WP
2 - RELOCATE EXIST. WATER METERS
2 - 200MM X 20MM TAPPING SADDLES
2 - 20MM CORPORATION STOPS
5M OF 20MM PE WATER TUBING, SDR 9, 1.38MPA WP
2 CONNECT USING NECESSARY FITTINGS

PROP. - 4 - SANITARY SEWER CLEAN-OUTS

PROP. - 1 - RELOCATE EXIST. FIRE HYDRANT
8M OF 150MM DI WATER PIPE, PC 2.41MPA
1 - 150MM GATE VALVE & VALVE BOX, 1.38MPA WP
1 - 150MM - 45° DI BEND
CONNECT USING NECESSARY FITTINGS

PROP. - 42M OF 200MM PVC WATER PIPE, SDR 21, 1.38MPA WP
2 - 200MM - 45° DI BENDS
CONNECT USING NECESSARY FITTINGS



DB 130 PG 375	DB 221 PG 488
DB 197 PG 177	DB 126 PG 427
DB 122 PG 673	DB 131 PG 345
DB 197 PG 175	DB 112 PG 602
DB 213 PG 236	DB 114 PG 403
DB 209 PG 586	DB 116 PG 50
DB 229 PG 265	DB 143 PG 7
MAP 9 PG 144	DB 137 PG 235
	DB 207 PG 704
	MAP 2 PG 28

MATCH TO SHEET UC-6
 -Y5A- POT Sta. 10+00.000 =
 -LREV- POT Sta. 28+30.414

MATCH TO SHEET UC-8
 -LREV- STA. 31+60.000