

PROJECT REFERENCE NO.	SHEET NO.
R-2562D	UC-9
DESIGNED BY: MRB	
DRAWN BY: MRB	
CHECKED BY: RBW	
APPROVED BY: RBW	
REVISED:	
NORTH CAROLINA DEPARTMENT OF TRANSPORTATION	
DESIGN SERVICES UNIT PHONE: (919) 250-4128 FAX: (919) 250-4119	

UTILITY CONSTRUCTION

PROP. - 4 - SANITARY SEWER CLEAN-OUTS

**PROP. - 1 - RELOCATE EXIST. FIRE HYDRANT
6M OF 150MM DI WATER PIPE, PC 2.41MPA
CONNECT USING NECESSARY FITTINGS**

**PROP. - 1 - RELOCATE EXIST. FIRE HYDRANT
6M OF 150MM DI WATER PIPE, PC 2.41MPA
CONNECT USING NECESSARY FITTINGS**

**PROP. - 22M OF 50MM PVC WATER
PIPE, SDR 21, 1.38MPA WP
CONNECT USING NECESSARY FITTINGS**

**PROP. - 5 - RELOCATE EXIST. WATER METERS
22M OF 20MM PE WATER TUBING, SDR 9, 1.38MPA WP
CONNECT USING NECESSARY FITTINGS**

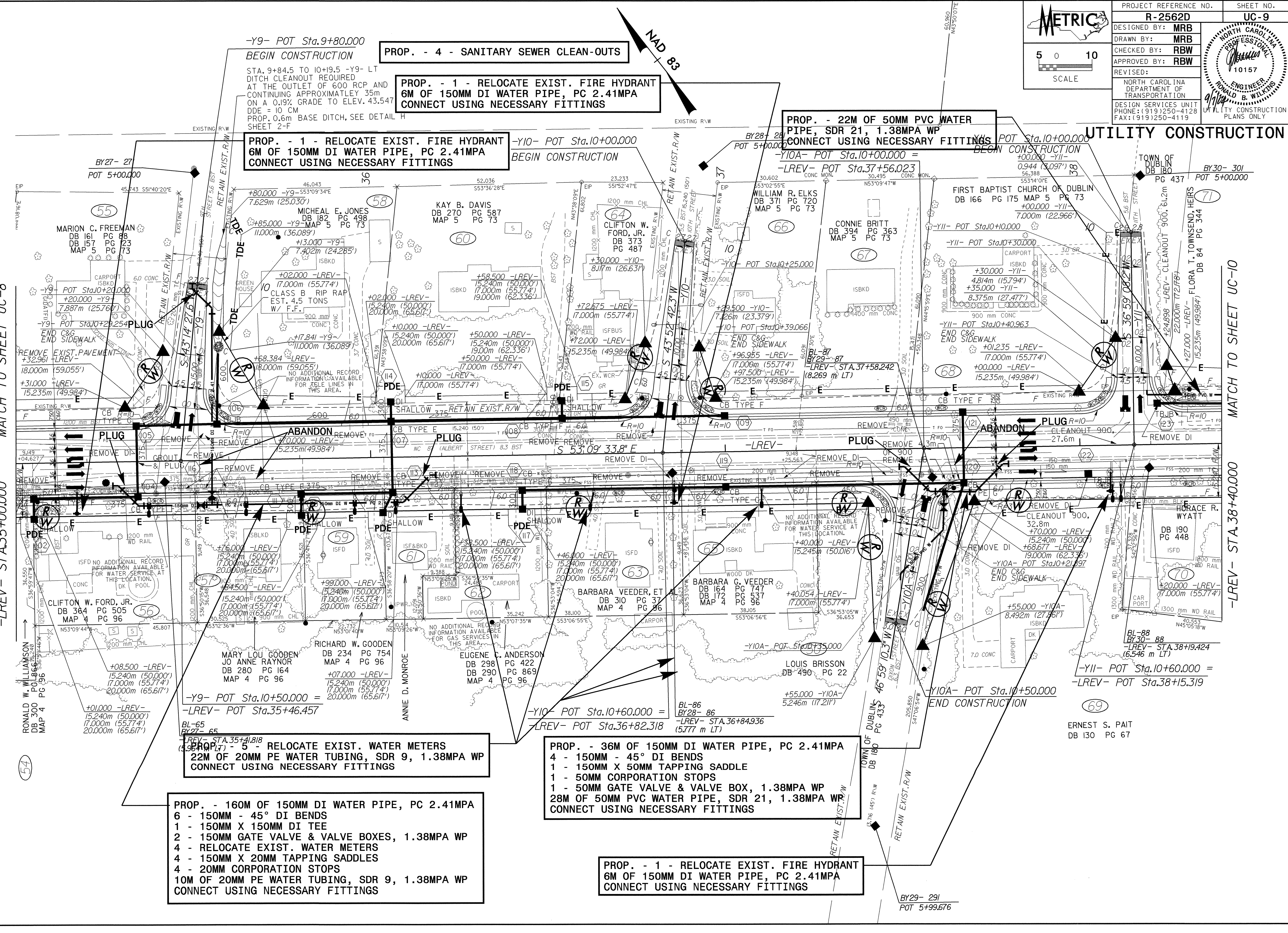
**PROP. - 160M OF 150MM DI WATER PIPE, PC 2.41MPA
6 - 150MM - 45° DI BENDS
1 - 150MM X 150MM DI TEE
2 - 150MM GATE VALVE & VALVE BOXES, 1.38MPA WP
4 - RELOCATE EXIST. WATER METERS
4 - 150MM X 20MM TAPPING SADDLES
4 - 20MM CORPORATION STOPS
10M OF 20MM PE WATER TUBING, SDR 9, 1.38MPA WP
CONNECT USING NECESSARY FITTINGS**

**PROP. - 36M OF 150MM DI WATER PIPE, PC 2.41MPA
4 - 150MM - 45° DI BENDS
1 - 150MM X 50MM TAPPING SADDLE
1 - 50MM CORPORATION STOPS
1 - 50MM GATE VALVE & VALVE BOX, 1.38MPA WP
28M OF 50MM PVC WATER PIPE, SDR 21, 1.38MPA WP
CONNECT USING NECESSARY FITTINGS**

**PROP. - 1 - RELOCATE EXIST. FIRE HYDRANT
6M OF 150MM DI WATER PIPE, PC 2.41MPA
CONNECT USING NECESSARY FITTINGS**

MATCH TO SHEET UC-8
-LREV- STA.35+00.000

MATCH TO SHEET UC-10
-LREV- STA.38+40.000



09-SEP-2004 10:00 R:\Utl\11413\11413-2562D12-UC9-1.rvt, psh.dgn