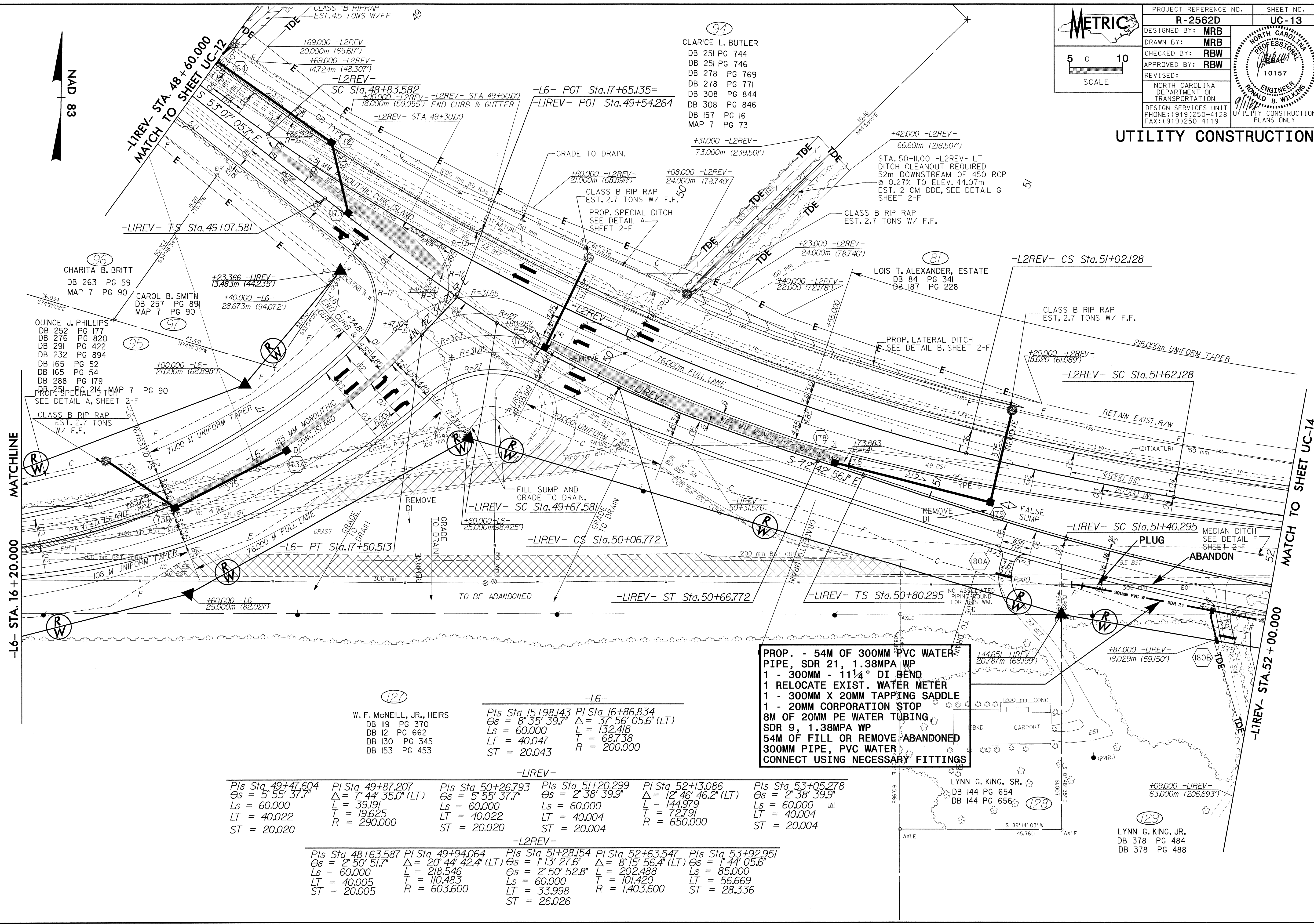


PROJECT REFERENCE NO.	SHEET NO.
R-2562D	UC-13
DESIGNED BY: MRB	
DRAWN BY: MRB	
CHECKED BY: RBW	
APPROVED BY: RBW	
REVISED:	
NORTH CAROLINA DEPARTMENT OF TRANSPORTATION	
DESIGN SERVICES UNIT PHONE: (919)250-4128 FAX: (919)250-4119	
UTILITY CONSTRUCTION	



94  
CLARICE L. BUTLER  
DB 251 PG 744  
DB 251 PG 746  
DB 278 PG 769  
DB 278 PG 771  
DB 308 PG 844  
DB 308 PG 846  
DB 157 PG 16  
MAP 7 PG 73

96  
CHARITA B. BRITT  
DB 263 PG 59  
MAP 7 PG 90

97  
CAROL B. SMITH  
DB 257 PG 891  
MAP 7 PG 90

95  
QUINCE J. PHILLIPS  
DB 252 PG 177  
DB 276 PG 820  
DB 291 PG 422  
DB 232 PG 894  
DB 165 PG 52  
DB 165 PG 54  
DB 288 PG 179  
MAP 7 PG 90

81  
LOIS T. ALEXANDER, ESTATE  
DB 84 PG 341  
DB 187 PG 228

127  
W. F. McNEILL, JR., HEIRS  
DB 119 PG 370  
DB 121 PG 662  
DB 130 PG 345  
DB 153 PG 453

-L6-  
Pls Sta 15+98.143 PI Sta 16+86.834  
Os = 8° 35' 39.7" Δ = 37° 56' 05.6" (LT)  
Ls = 60.000 L = 132.418  
LT = 40.047 T = 68.738  
R = 200.000  
ST = 20.043

-LIREV-  
Pls Sta 49+47.604 PI Sta 49+87.207  
Os = 5° 55' 37.1" Δ = 7° 44' 35.0" (LT)  
Ls = 60.000 L = 39.191  
LT = 40.022 T = 19.625  
R = 290.000  
ST = 20.020

Pls Sta 50+26.793 PI Sta 51+20.299  
Os = 5° 55' 37.7" Δ = 2° 38' 39.9"  
Ls = 60.000 L = 60.000  
LT = 40.022 T = 40.004  
R = 650.000  
ST = 20.004

Pls Sta 52+13.086 PI Sta 53+05.278  
Os = 12° 46' 46.2" (LT) Δ = 2° 38' 39.9"  
Ls = 60.000 L = 144.979  
LT = 40.004 T = 72.791  
R = 650.000  
ST = 20.004

-L2REV-  
Pls Sta 48+63.587 PI Sta 49+94.064  
Os = 2° 50' 51.7" Δ = 20° 44' 42.4" (LT)  
Ls = 60.000 L = 218.546  
LT = 40.005 T = 110.483  
R = 603.600  
ST = 26.026

Pls Sta 51+28.154 PI Sta 52+63.547  
Os = 1° 13' 27.6" Δ = 8° 15' 56.4" (LT)  
Ls = 60.000 L = 202.488  
LT = 33.998 T = 101.420  
R = 1,403.600  
ST = 28.336

Pls Sta 53+92.951  
Os = 1° 44' 05.6"  
Ls = 85.000  
LT = 56.669  
ST = 28.336

PROP. - 54M OF 300MM PVC WATER PIPE, SDR 21, 1.38MPA WP  
1 - 300MM - 11 1/4° DI BEND  
1 RELOCATE EXIST. WATER METER  
1 - 300MM X 20MM TAPPING SADDLE  
1 - 20MM CORPORATION STOP  
8M OF 20MM PE WATER TUBING, SDR 9, 1.38MPA WP  
54M OF FILL OR REMOVE ABANDONED 300MM PIPE, PVC WATER  
CONNECT USING NECESSARY FITTINGS

042597  
R:\13-AUG-2004\_08506\_R-2562D17\_UC13.ut.psh.dgn  
11/11/04