

PROJECT REFERENCE NO. **R-2562D** SHEET NO. **UC-14**

DESIGNED BY: **MRB**

DRAWN BY: **MRB**

CHECKED BY: **RBW**

APPROVED BY: **RBW**

REVISER:

NORTH CAROLINA PROFESSIONAL ENGINEER REGISTRATION BOARD 10157

ENGINEER RONALD B. WILKINS

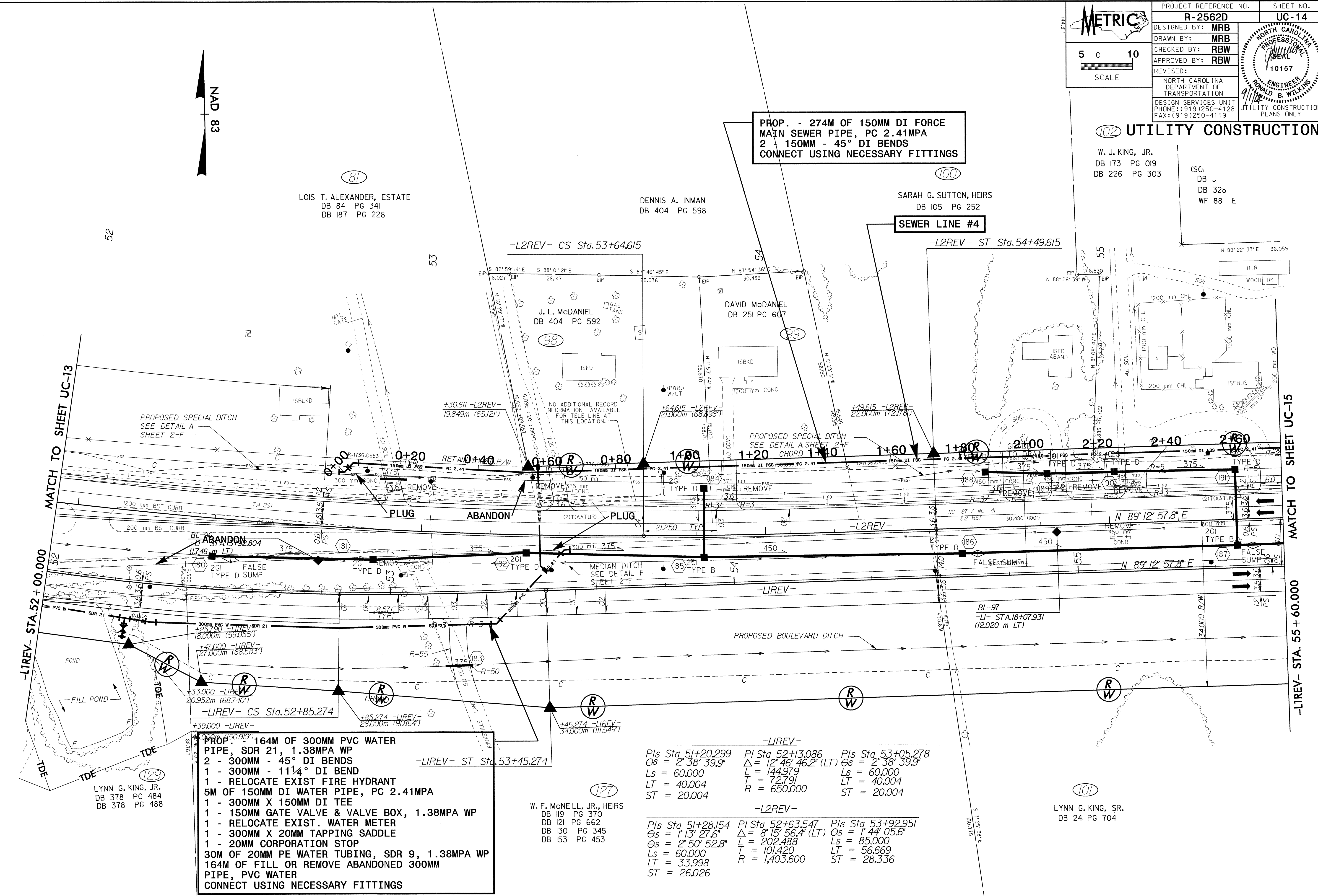
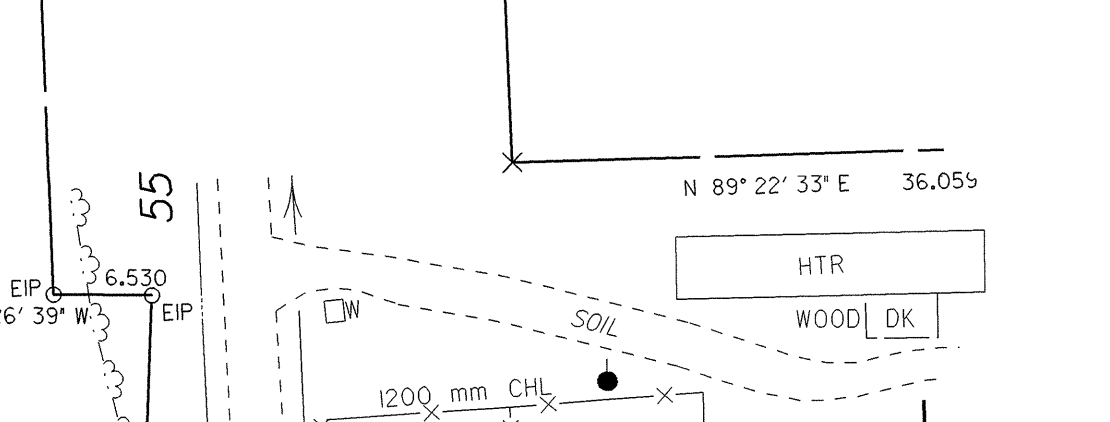
NORTH CAROLINA DEPARTMENT OF TRANSPORTATION

DESIGN SERVICES UNIT PHONE: (919)250-4128 FAX: (919)250-4119 UTILITY CONSTRUCTION PLANS ONLY

UTILITY CONSTRUCTION

W. J. KING, JR.
DB 173 PG 019
DB 226 PG 303

(SO)
DB
DB 326
WF 88 E



**PROP. - 274M OF 150MM DI FORCE MAIN SEWER PIPE, PC 2.41MPA
2 - 150MM - 45° DI BENDS
CONNECT USING NECESSARY FITTINGS**

**PROP. - 164M OF 300MM PVC WATER PIPE, SDR 21, 1.38MPA WP
2 - 300MM - 45° DI BENDS
1 - 300MM - 11 1/4° DI BEND
1 - RELOCATE EXIST FIRE HYDRANT
5M OF 150MM DI WATER PIPE, PC 2.41MPA
1 - 300MM X 150MM DI TEE
1 - 150MM GATE VALVE & VALVE BOX, 1.38MPA WP
1 - RELOCATE EXIST. WATER METER
1 - 300MM X 20MM TAPPING SADDLE
1 - 20MM CORPORATION STOP
30M OF 20MM PE WATER TUBING, SDR 9, 1.38MPA WP
164M OF FILL OR REMOVE ABANDONED 300MM PIPE, PVC WATER
CONNECT USING NECESSARY FITTINGS**

-LIREV-

Pls Sta 51+20.299	Pls Sta 52+13.086	Pls Sta 53+05.278
Os = 2° 38' 39.9"	Δ = 12° 46' 46.2" (LT)	Os = 2° 38' 39.9"
Ls = 60.000	L = 144.979	Ls = 60.000
LT = 40.004	T = 72.791	LT = 40.004
ST = 20.004	R = 650.000	ST = 20.004

-L2REV-

Pls Sta 51+28.154	Pls Sta 52+63.547	Pls Sta 53+92.951
Os = 1° 13' 27.6"	Δ = 8° 15' 56.4" (LT)	Os = 1° 44' 05.6"
Os = 2° 50' 52.8"	L = 202.488	Ls = 85.000
Ls = 60.000	T = 101.420	LT = 56.669
LT = 33.998	R = 1,403.600	ST = 28.336
ST = 26.026		

0425697

30-AUC-2004_0804
R:\projects\2562D18-UC14\ut-pah.dgn
DATE PLOT: 11/05/2004 11:52:24