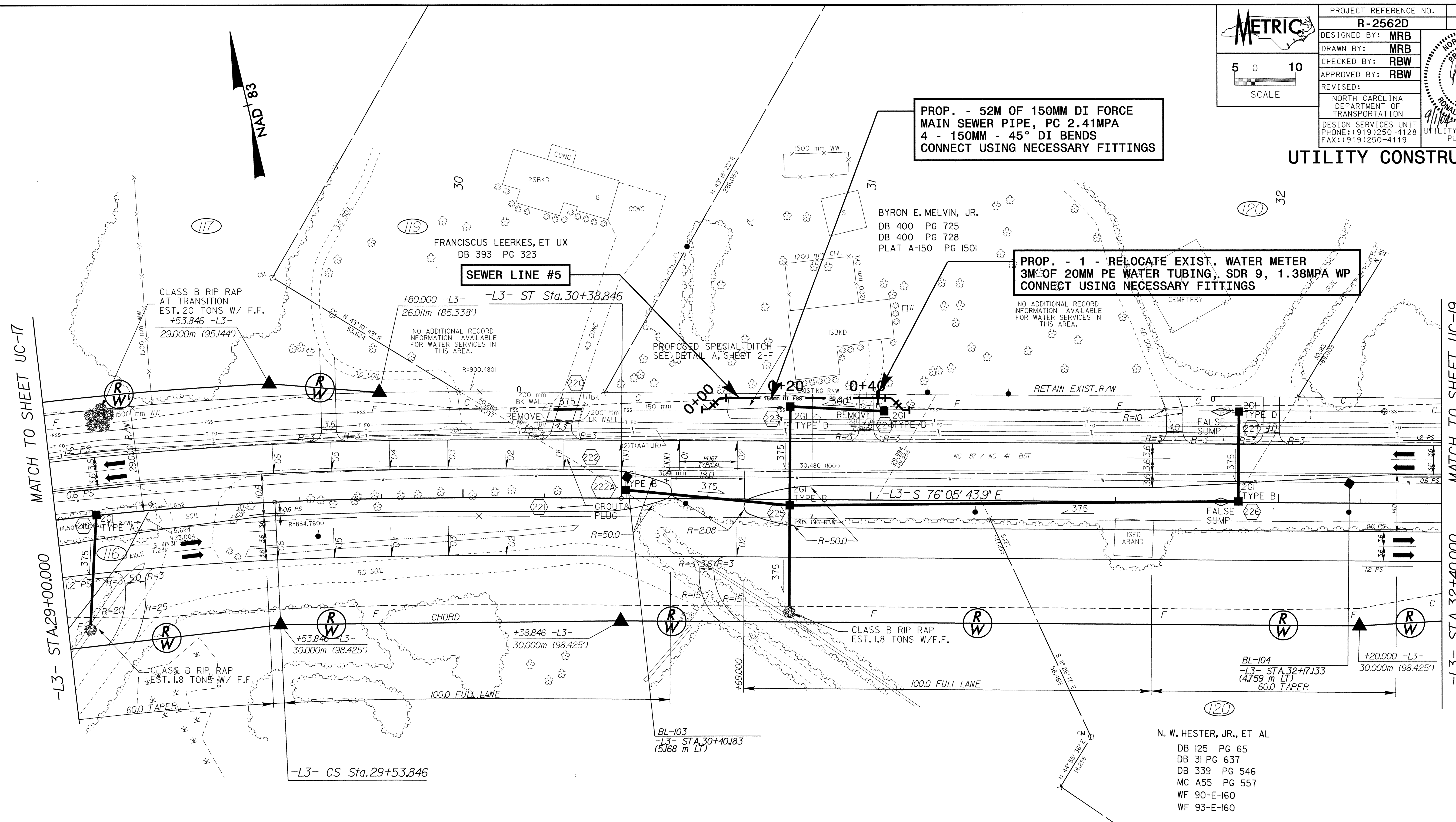


PROJECT REFERENCE NO.	R-2562D	SHEET NO.	UC-18
DESIGNED BY:	MRB		
DRAWN BY:	MRB		
CHECKED BY:	RBW		
APPROVED BY:	RBW		
REVISED:		NORTH CAROLINA DEPARTMENT OF TRANSPORTATION DESIGN SERVICES UNIT PHONE: (919) 250-4128 FAX: (919) 250-4119	
UTILITY CONSTRUCTION			



**PROP. - 52M OF 150MM DI FORCE MAIN SEWER PIPE, PC 2.41MPA
4 - 150MM - 45° DI BENDS
CONNECT USING NECESSARY FITTINGS**

**PROP. - 1 - RELOCATE EXIST. WATER METER
3M OF 20MM PE WATER TUBING, SDR 9, 1.38MPA WP
CONNECT USING NECESSARY FITTINGS**

SEWER LINE #5

NO ADDITIONAL RECORD INFORMATION AVAILABLE FOR WATER SERVICES IN THIS AREA.

NO ADDITIONAL RECORD INFORMATION AVAILABLE FOR WATER SERVICES IN THIS AREA.

N. W. HESTER, JR., ET AL
DB 125 PG 65
DB 31 PG 637
DB 339 PG 546
MC A55 PG 557
WF 90-E-160
WF 93-E-160

MARVIN & STEVEN W. TATUM
DBA QUALITY FARMS
DB 342 PG 531

-L3-		
Pls Sta 28+05.432	Pl Sta 28+93.915	Pls Sta 29+82.187
Os = 3° 02' 37.8"	Δ = 8° 36' 02.7" (RT)	Os = 3° 02' 37.8"
Ls = 85.000	L = 120.089	Ls = 85.000
LT = 56.675	T = 60.158	LT = 56.675
ST = 28.341	R = 800.000	ST = 28.341
	SE = 0.06	

042587
R:\11-30-AUG-2004 08:03 R-2562D22.L18.ut.pat.dgn
mr:rbw