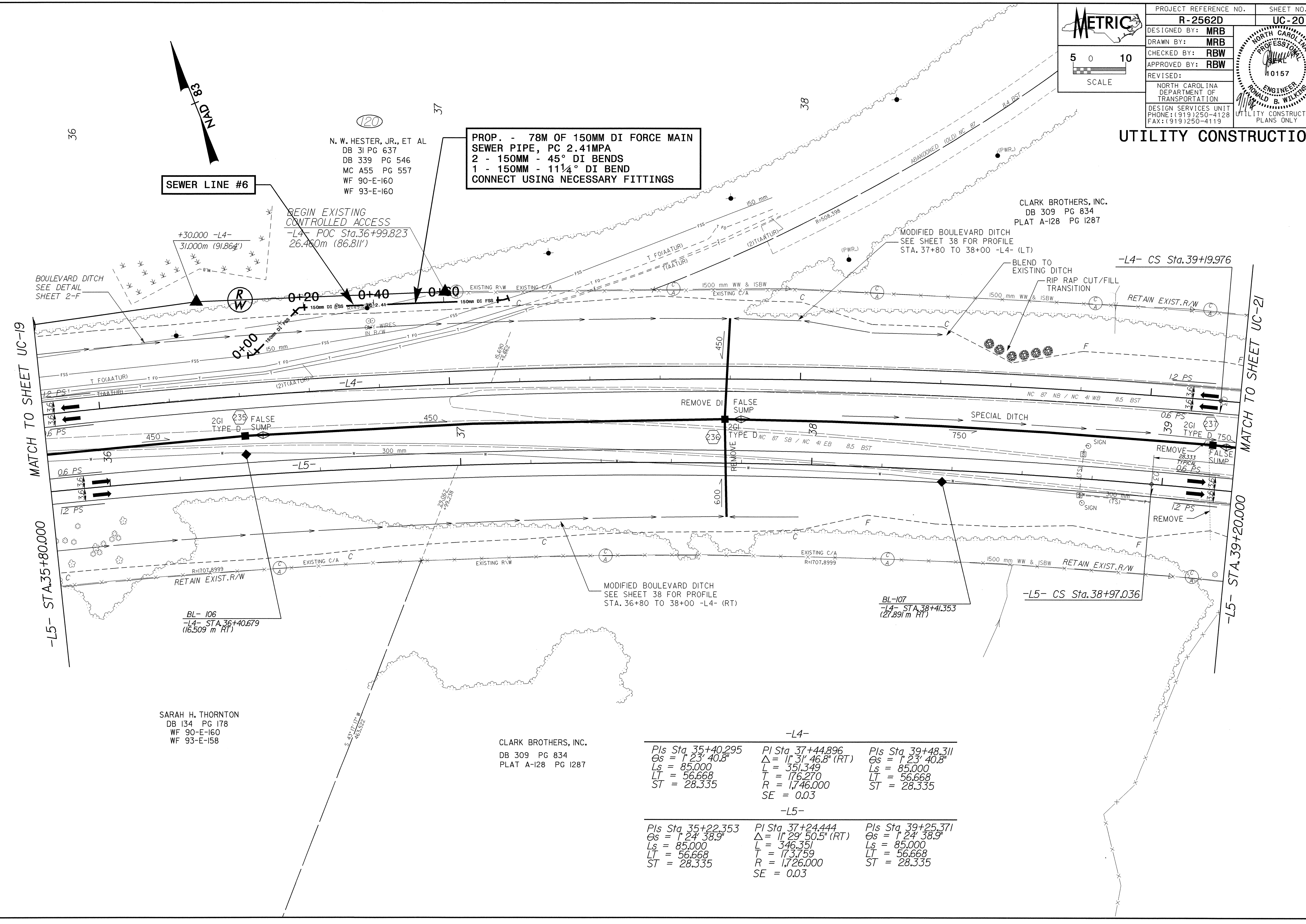


PROJECT REFERENCE NO.	SHEET NO.
<b>R-2562D</b>	<b>UC-20</b>
DESIGNED BY: <b>MRB</b>	
DRAWN BY: <b>MRB</b>	
CHECKED BY: <b>RBW</b>	
APPROVED BY: <b>RBW</b>	
REVISED:	
NORTH CAROLINA DEPARTMENT OF TRANSPORTATION DESIGN SERVICES UNIT PHONE: (919)250-4128 FAX: (919)250-4119	

**UTILITY CONSTRUCTION**



**PROP. - 78M OF 150MM DI FORCE MAIN  
SEWER PIPE, PC 2.41MPA  
2 - 150MM - 45° DI BENDS  
1 - 150MM - 11¼° DI BEND  
CONNECT USING NECESSARY FITTINGS**

**N. W. HESTER, JR., ET AL**  
DB 31 PG 637  
DB 339 PG 546  
MC A55 PG 557  
WF 90-E-160  
WF 93-E-160

**CLARK BROTHERS, INC.**  
DB 309 PG 834  
PLAT A-128 PG 1287

**SEWER LINE #6**

**BEGIN EXISTING  
CONTROLLED ACCESS**  
-L4- POC Sta. 36+99.823  
26.460m (86.811')

**BOULEVARD DITCH**  
SEE DETAIL  
SHEET 2-F

**MODIFIED BOULEVARD DITCH**  
SEE SHEET 38 FOR PROFILE  
STA. 37+80 TO 38+00 -L4- (LT)

**BLEND TO  
EXISTING DITCH**  
RIP RAP CUT/FILL  
TRANSITION

**2GI TYPE D  
FALSE SUMP**

**REMOVE DI  
FALSE SUMP**

**SPECIAL DITCH**

**REMOVE  
FALSE SUMP**

**MODIFIED BOULEVARD DITCH**  
SEE SHEET 38 FOR PROFILE  
STA. 36+80 TO 38+00 -L4- (RT)

**BL-107**  
-L4- STA. 38+41.353  
(27.891 m RT)

**-L5- CS Sta. 38+97.036**

**SARAH H. THORNTON**  
DB 134 PG 178  
WF 90-E-160  
WF 93-E-158

**CLARK BROTHERS, INC.**  
DB 309 PG 834  
PLAT A-128 PG 1287

<b>-L4-</b>		
<i>Pls Sta 35+40.295</i>	<i>Pl Sta 37+44.896</i>	<i>Pls Sta 39+48.311</i>
<i>Gs = 1' 23' 40.8"</i>	<i>Δ = 11' 31' 46.8" (RT)</i>	<i>Gs = 1' 23' 40.8"</i>
<i>Ls = 85.000</i>	<i>L = 351.349</i>	<i>Ls = 85.000</i>
<i>LT = 56.668</i>	<i>T = 176.270</i>	<i>LT = 56.668</i>
<i>ST = 28.335</i>	<i>R = 1,746.000</i>	<i>ST = 28.335</i>
	<i>SE = 0.03</i>	
<b>-L5-</b>		
<i>Pls Sta 35+22.353</i>	<i>Pl Sta 37+24.444</i>	<i>Pls Sta 39+25.371</i>
<i>Gs = 1' 24' 38.9"</i>	<i>Δ = 11' 29' 50.5" (RT)</i>	<i>Gs = 1' 24' 38.9"</i>
<i>Ls = 85.000</i>	<i>L = 346.351</i>	<i>Ls = 85.000</i>
<i>LT = 56.668</i>	<i>T = 173.759</i>	<i>LT = 56.668</i>
<i>ST = 28.335</i>	<i>R = 1,726.000</i>	<i>ST = 28.335</i>
	<i>SE = 0.03</i>	

30-AUG-2004 08:03  
 R:\Utilities\Projects\2562D\UC20\ut-psh.dgn  
 04253