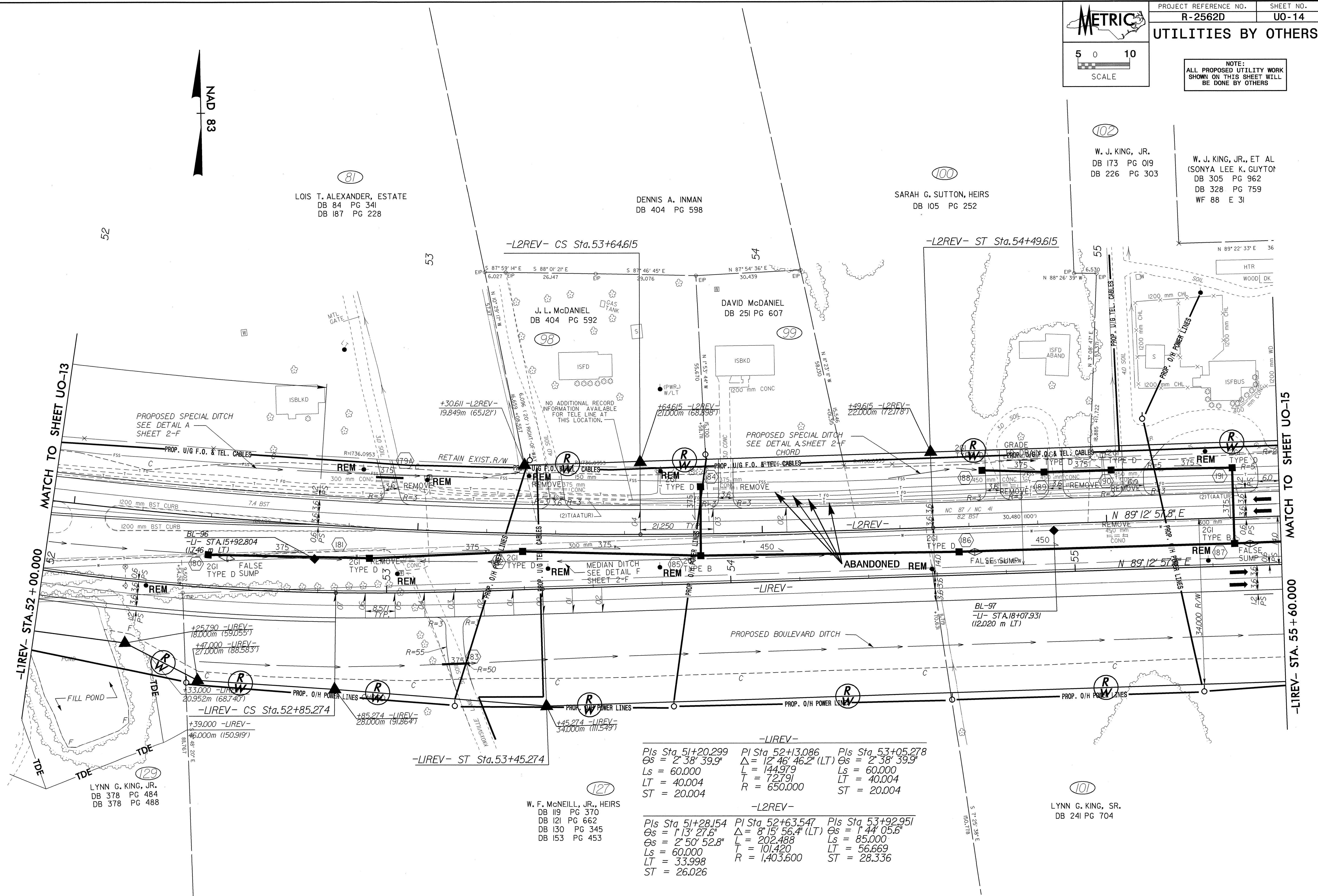
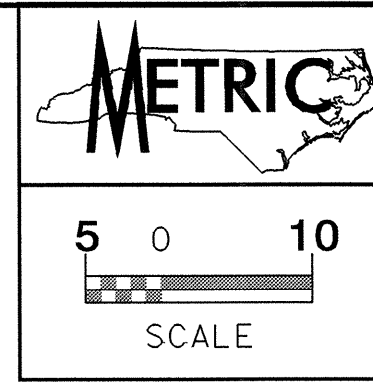


04597

22-SEP-2004 15:23  
RA:U:\1525\1525-R-2562018.U014.ut.psh-dgn  
mbr:10112



-LIREV-		
Pls Sta 51+20.299	Pls Sta 52+13.086	Pls Sta 53+05.278
Os = 2° 38' 39.9"	Δ = 12° 46' 46.2" (LT)	Os = 2° 38' 39.9"
Ls = 60.000	L = 144.979	Ls = 60.000
LT = 40.004	T = 72.791	LT = 40.004
ST = 20.004	R = 650.000	ST = 20.004
-L2REV-		
Pls Sta 51+28.154	Pls Sta 52+63.547	Pls Sta 53+92.951
Os = 1° 13' 27.6"	Δ = 8° 15' 56.4" (LT)	Os = 1° 44' 05.6"
Os = 2° 50' 52.8"	L = 202.488	Ls = 85.000
Ls = 60.000	T = 101.420	LT = 56.669
LT = 33.998	R = 1,403.600	ST = 28.336
ST = 26.026		

(127)  
W. F. McNEILL, JR., HEIRS  
DB 119 PG 370  
DB 121 PG 662  
DB 130 PG 345  
DB 153 PG 453

(101)  
LYNN G. KING, SR.  
DB 241 PG 704