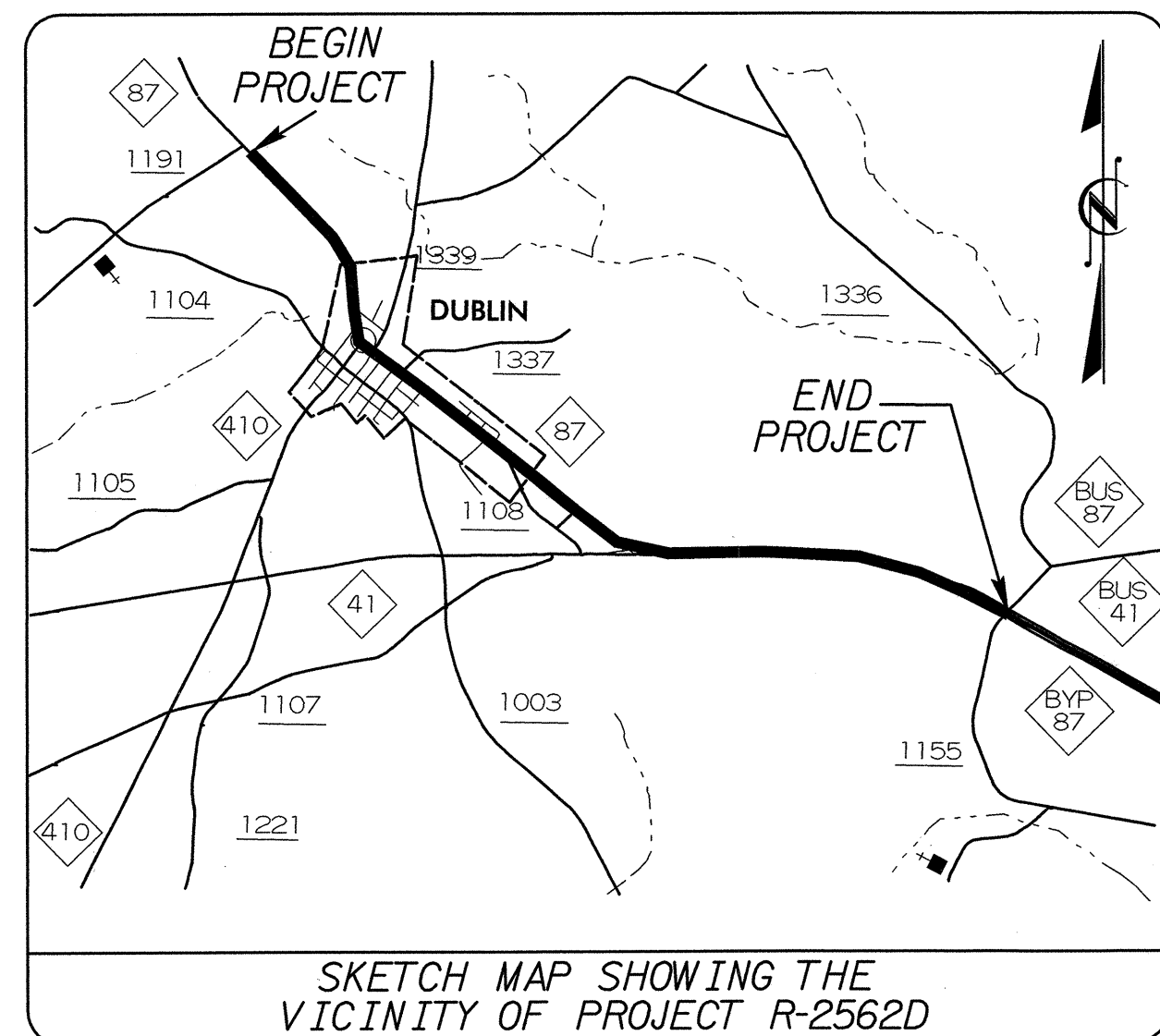


9/09/99

CONTRACT: C201118 TIP PROJECT: R-2562D

See Sheet 1-A For Index of Sheets
See Sheet 1-B For Conventional Symbols

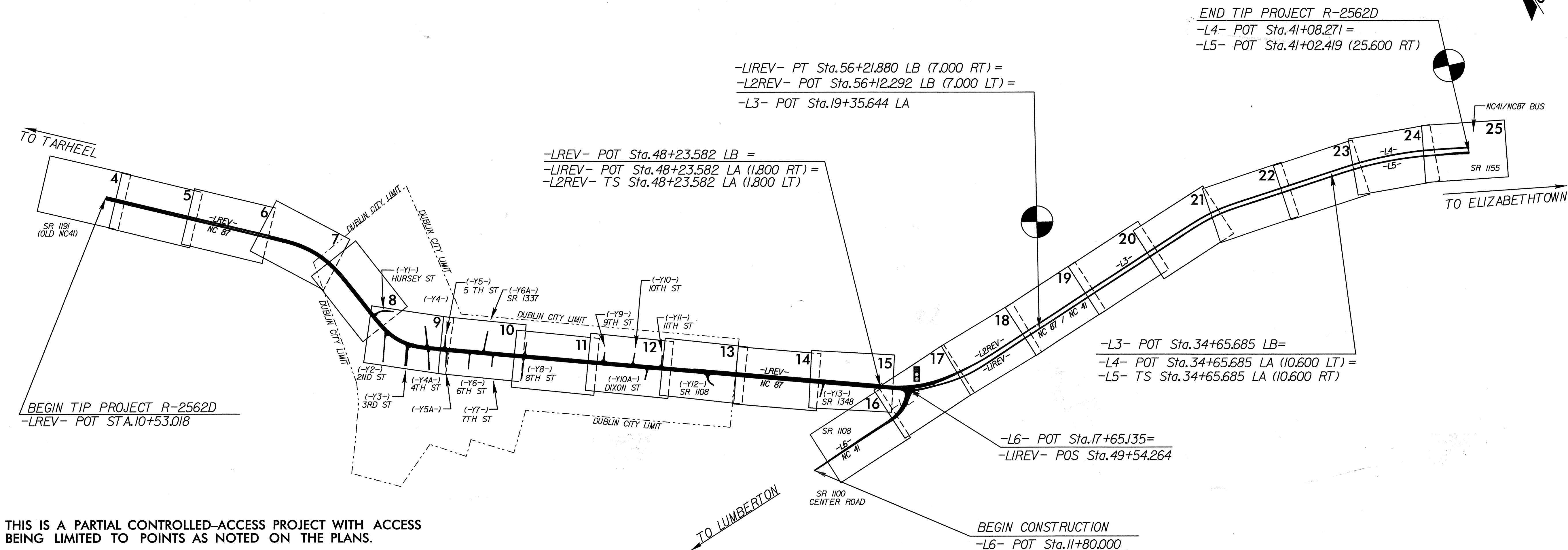


STATE OF NORTH CAROLINA
DIVISION OF HIGHWAYS
BLADEN COUNTY

LOCATION: NC 87 FROM SR 1191 (OLD NC 41) TO NC 41/NC 87 BUS.
TYPE OF WORK: GRADING, DRAINAGE, PAVING, CULVERT & SIGNALS

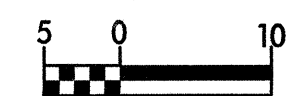
STATE	STATE PROJECT REFERENCE NO.	SHEET NO.	TOTAL SHEETS
N.C.	R-2562D	1	
STATE PROJ. NO.	F.A. PROJ. NO.	DESCRIPTION	
34467.1.7		P.E.	
34467.2.7		RW, UTIL.	
34467.3.8		CONST.	

ALL DIMENSIONS IN THESE PLANS ARE IN METERS

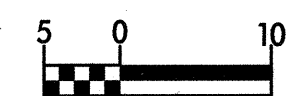


THIS IS A PARTIAL CONTROLLED-ACCESS PROJECT WITH ACCESS BEING LIMITED TO POINTS AS NOTED ON THE PLANS.

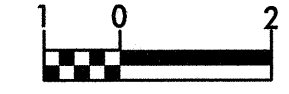
GRAPHIC SCALES



PLANS



PROFILE (HORIZONTAL)



PROFILE (VERTICAL)

DESIGN DATA

ADT 2004 = 12765
ADT 2025 = 21000

DHV = 11 %
D = 55 %
T = 13 % *
V = 100 km/h

* TTST 4 % DUAL 9 %

PROJECT LENGTH

LENGTH ROADWAY TIP PROJECT R-2562D = 6.736 km
TOTAL LENGTH TIP PROJECT R-2562D = 6.736 km

NOTE : THE EAST BOUND LANE WAS USED TO COMPUTE THE PROJECT LENGTH.

Prepared for the North Carolina Department of Transportation in the Office of:
WETHERILL ENGINEERING TRANSPORTATION PLANNING/DESIGN - BRIDGE/STRUCTURE DESIGN
CIVIL/SITE DESIGN - GIS/GPS - CONSTRUCTION OBSERVATION

2002 STANDARD SPECIFICATIONS
RIGHT OF WAY DATE:
JANUARY 24, 2002

LETTING DATE:
DECEMBER 21, 2004

EDWARD G. WETHERILL, PE
PROJECT ENGINEER

BOB A. MAY, PE
PROJECT DESIGN ENGINEER

NC DOT CONTACT

CATHY S. HOUSER, PE
NC DOT PROJECT ENGINEER

HYDRAULICS ENGINEER



SIGNATURE: [Signature]
ROADWAY DESIGN ENGINEER



SIGNATURE: [Signature]
ROADWAY DESIGN ENGINEER

DIVISION OF HIGHWAYS STATE OF NORTH CAROLINA

STATE DESIGN ENGINEER
[Signature] P.E.

DEPARTMENT OF TRANSPORTATION
FEDERAL HIGHWAY ADMINISTRATION

APPROVED
DIVISION ADMINISTRATOR
DATE

26-AUG-2004 10:44
C:\Roadway\Projects\R-2562D\ROY_TSHDGN
BMAJ