

**METRIC**

PROJECT REFERENCE NO. R-2562D SHEET NO. 8

R/W SHEET NO.

ROADWAY DESIGN ENGINEER  
 HYDRAULICS ENGINEER

SEAL 2716  
 ENGINEER  
 10/12/04

SEAL 26696  
 ENGINEER  
 10/12/04

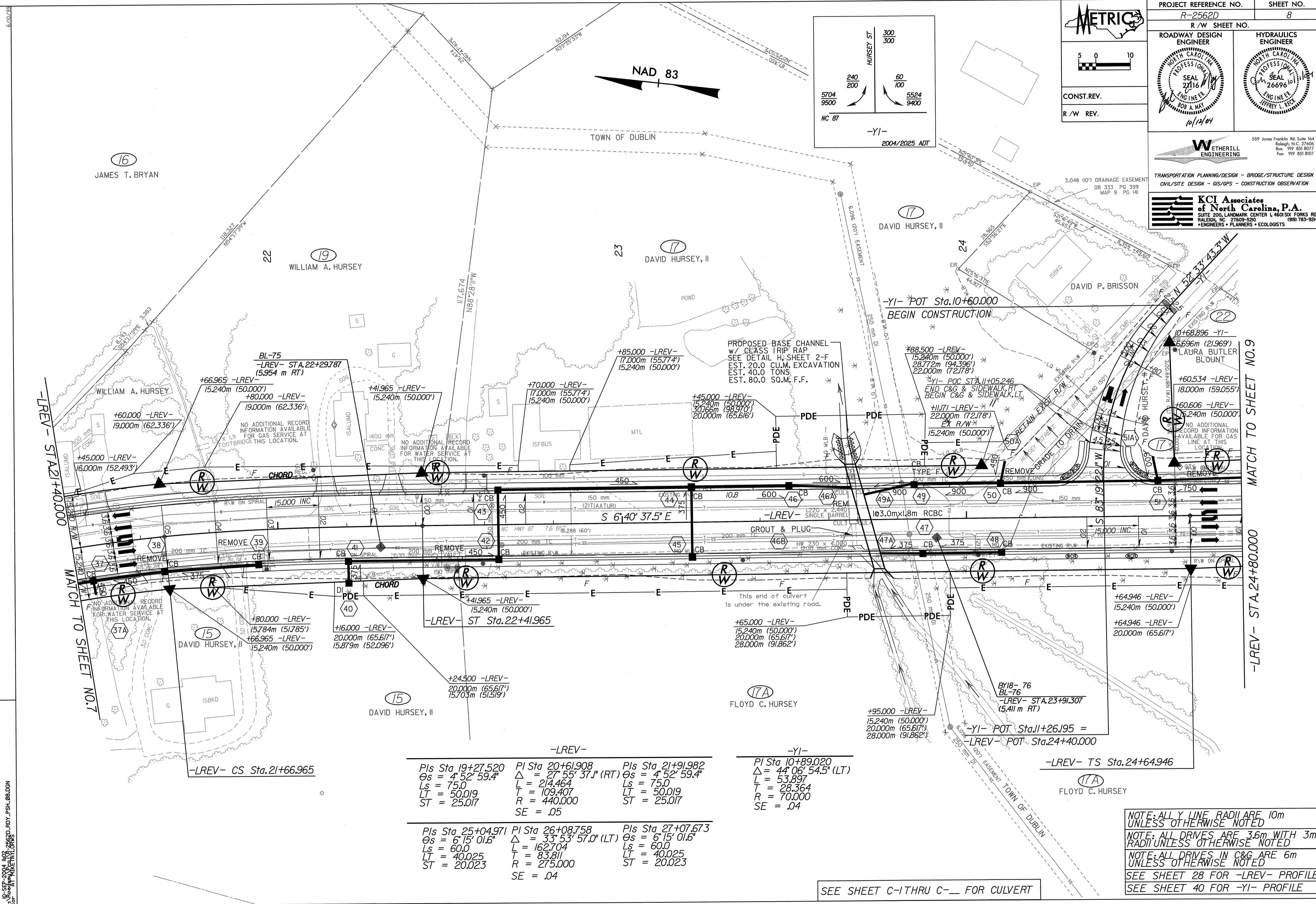
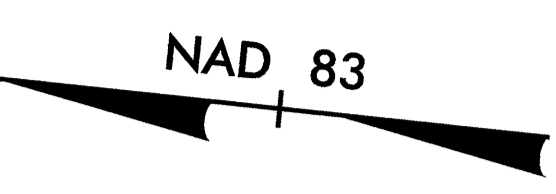
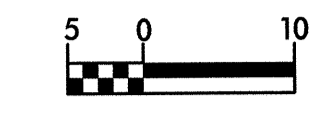
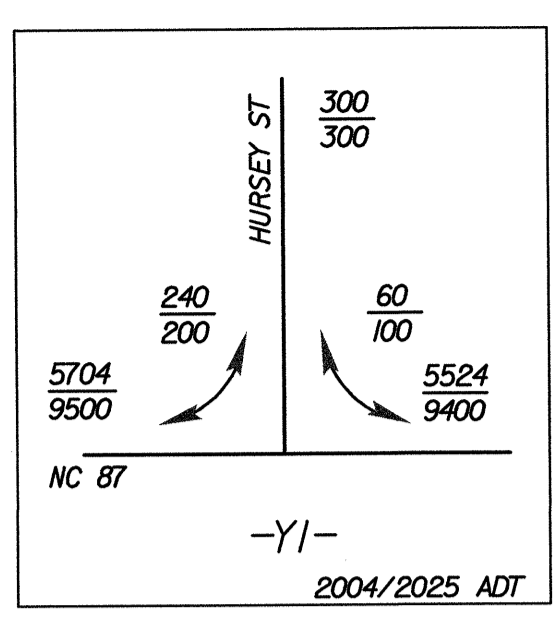
CONST. REV.  
 R/W REV.

**WETHERILL ENGINEERING**

559 Jones Franklin Rd, Suite 104  
 Raleigh, NC 27606  
 Bus: 919 851 8077  
 Fax: 919 851 8107

TRANSPORTATION PLANNING/DESIGN - BRIDGE/STRUCTURE DESIGN  
 CIVIL/SITE DESIGN - GIS/GPS - CONSTRUCTION OBSERVATION

**KCI Associates of North Carolina, P.A.**  
 SUITE 200, LANDMARK CENTER I, 4601 SIX FORKS RD.  
 RALEIGH, NC 27609-5200  
 ENGINEERS • PLANNERS • ECOLOGISTS



-LREV-			-Y1-		
PI Sta 19+27.520	PI Sta 20+61.908	PI Sta 21+91.982	PI Sta 10+89.020		
$\Delta s = 4^{\circ}52'59.4''$	$\Delta = 27^{\circ}55'37.1''$ (RT)	$\Delta s = 4^{\circ}52'59.4''$	$\Delta = 44^{\circ}06'54.5''$ (LT)		
$L_s = 75.0$	$L = 214.464$	$L_s = 75.0$	$L = 53.897$		
$LT = 50.019$	$LT = 109.407$	$LT = 50.019$	$T = 28.364$		
$ST = 25.017$	$R = 440.000$	$ST = 25.017$	$R = 70.000$		
	$SE = .05$		$SE = .04$		
-LREV-			-Y1-		
PIs Sta 25+04.971	PI Sta 26+08.758	PIs Sta 27+07.673			
$\Delta s = 6^{\circ}15'01.6''$	$\Delta = 33^{\circ}53'57.0''$ (LT)	$\Delta s = 6^{\circ}15'01.6''$			
$L_s = 60.0$	$L = 162.704$	$L_s = 60.0$			
$LT = 40.025$	$T = 83.811$	$LT = 40.025$			
$ST = 20.023$	$R = 275.000$	$ST = 20.023$			
	$SE = .04$				

NOTE: ALL Y LINE RADII ARE 10m UNLESS OTHERWISE NOTED

NOTE: ALL DRIVES ARE 3.6m WITH 3m RADII UNLESS OTHERWISE NOTED

NOTE: ALL DRIVES IN C&G ARE 6m UNLESS OTHERWISE NOTED

SEE SHEET 28 FOR -LREV- PROFILE

SEE SHEET 40 FOR -Y1- PROFILE

SEE SHEET C-1 THRU C-\_\_\_ FOR CULVERT

10-SEP-2004 11:02  
 M:\Projects\2562D\2562D\_RWD\_PSH\_08.DGN