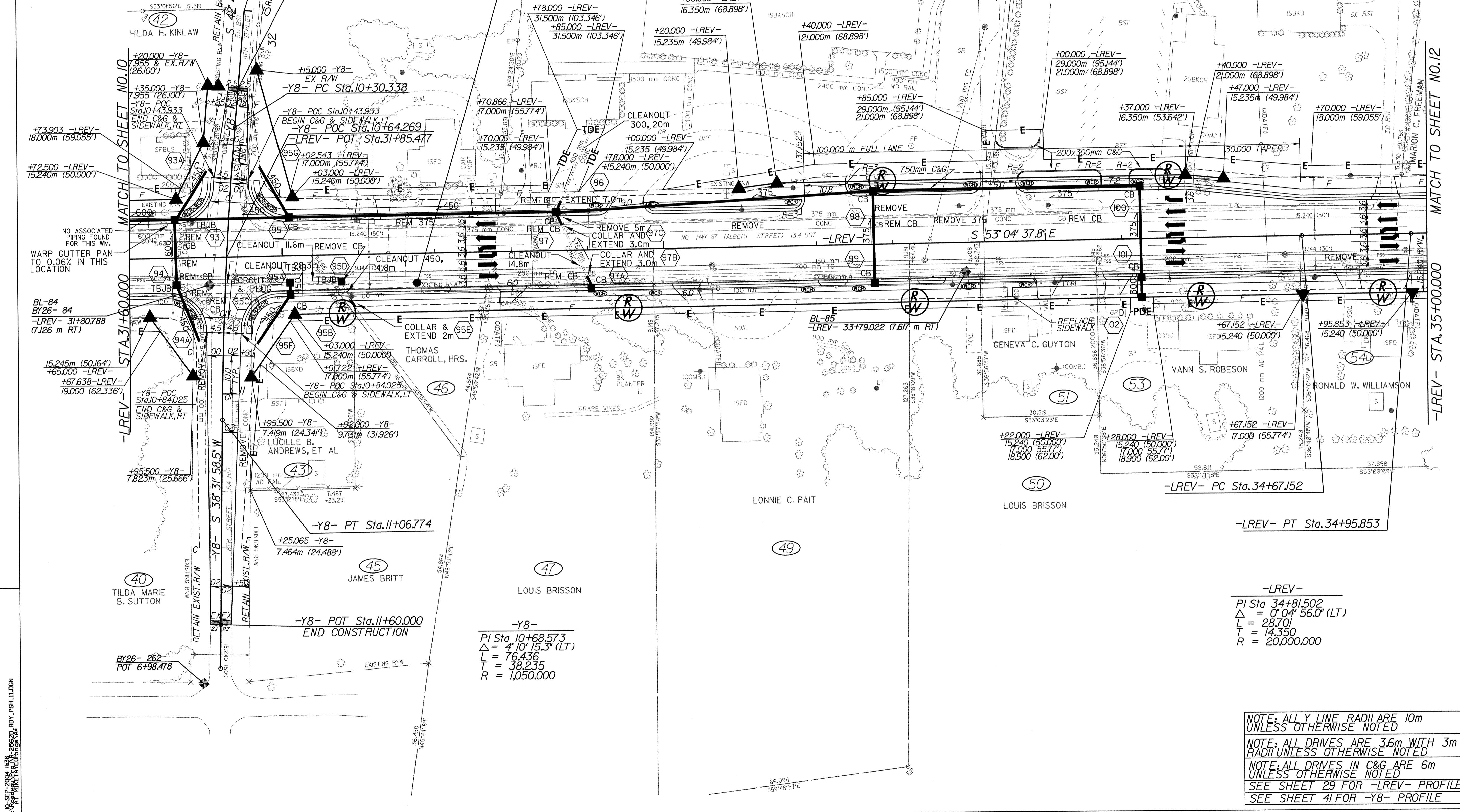


KCI Associates
of North Carolina, P.A.
SUITE 200, LANDMARK CENTER I, 4601 SIX FORKS RD.
RALEIGH, NC 27609-5210
+ ENGINEERS • PLANNERS • ECOLOGISTS (919) 783-9214

WETHERILL ENGINEERING
TRANSPORTATION PLANNING/DESIGN - BRIDGE/STRUCTURE DESIGN
CIVIL/SITE DESIGN - GIS/GPS - CONSTRUCTION OBSERVATION
559 Jones Franklin Rd. Suite 164
Raleigh, N.C. 27606
Bus: 919 851 8017
Fax: 919 851 8107

PROJECT REFERENCE NO. R-2562D		SHEET NO. 11	
R/W SHEET NO.			
ROADWAY DESIGN ENGINEER SEAL 21114 FOR A.P. 10/12/04		HYDRAULICS ENGINEER SEAL 10118 FOR A.P. 10/12/04	
CONST. REV.		R/W REV.	



-Y8-
PI Sta 10+68.573
Δ = 4' 10" 15.3" (LT)
L = 76.436
T = 38.235
R = 1,050.000

-LREV-
PI Sta 34+81.502
Δ = 0' 04" 56.0" (LT)
L = 28.701
T = 14.350
R = 20,000.000

NOTE: ALL Y LINE RADII ARE 10m UNLESS OTHERWISE NOTED
NOTE: ALL DRIVES ARE 3.6m WITH 3m RADII UNLESS OTHERWISE NOTED
NOTE: ALL DRIVES IN C&G ARE 6m UNLESS OTHERWISE NOTED
SEE SHEET 29 FOR -LREV- PROFILE
SEE SHEET 41 FOR -Y8- PROFILE

10-SEP-2004 11:38
C:\PROJECTS\2562D\RDY_FSH-11.DGN
AUTOCAD 2004