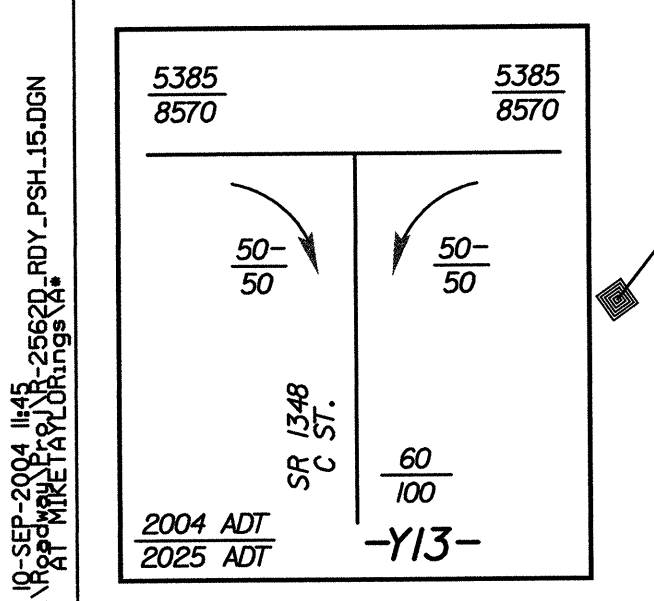
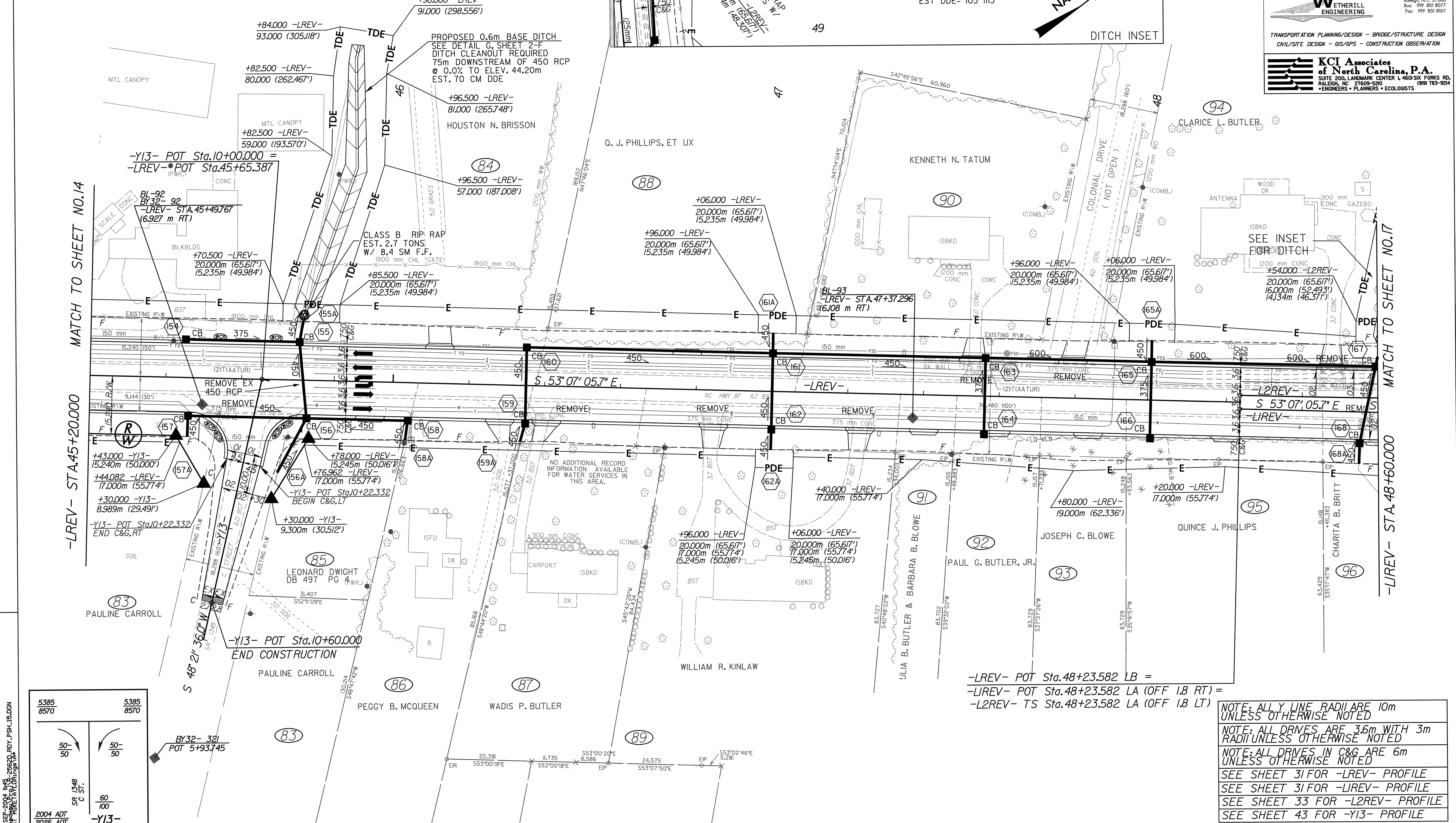


-L2REV-

Pls Sta 48+63.587 Pls Sta 49+94.064 Pls Sta 51+28.154
 $\Delta = 2^{\circ} 50' 51.7''$ $\Delta = 20^{\circ} 44' 42.4''$ (LT) $\Delta = 1^{\circ} 13' 27.6''$
 $L_s = 60.000$ $L = 218.546$ $L = 60.000$
 $LT = 40.005$ $L = 110.483$ $L_s = 60.000$
 $ST = 20.005$ $R = 603.600$ $LT = 33.998$
 $SE = 0.06$ $ST = 26.026$

Pls Sta 52+63.547 Pls Sta 53+92.951
 $\Delta = 8^{\circ} 15' 56.4''$ (LT) $\Delta = 1^{\circ} 44' 05.6''$
 $L = 202.488$ $L_s = 85.000$
 $T = 101.420$ $LT = 56.669$
 $R = 1,403.600$ $ST = 28.336$
 $SE = 0.04$

PROJECT REFERENCE NO. R-2562D		SHEET NO. 15	
ROADWAY DESIGN ENGINEER		HYDRAULICS ENGINEER	
CONST. REV.		R/W REV.	
559 Jones Franklin Rd. Suite 164 Raleigh, N.C. 27609 Tel: 919 851 8077 Fax: 919 851 8107			
TRANSPORTATION PLANNING/DESIGN - BRIDGE/STRUCTURE DESIGN CIVIL/SITE DESIGN - GIS/GPS - CONSTRUCTION OBSERVATION			
SUITE 200, LANDMARK CENTER L, 460 SIX FORKS RD. RALEIGH, NC 27609-5200 *ENGINEERS * PLANNERS * ECOLOGISTS			



NOTE: ALL Y LINE RADII ARE 10m UNLESS OTHERWISE NOTED

NOTE: ALL DRIVES ARE 3.6m WITH 3m RADII UNLESS OTHERWISE NOTED

NOTE: ALL DRIVES IN C&G ARE 6m UNLESS OTHERWISE NOTED

SEE SHEET 31 FOR -LREV- PROFILE

SEE SHEET 31 FOR -L2REV- PROFILE

SEE SHEET 33 FOR -Y13- PROFILE

10-SEP-2004 14:45 2562D.DWG PSH.US.DGN
 10-SEP-2004 14:45 2562D.DWG PSH.US.DGN