

**METRIX**

PROJECT REFERENCE NO. R-2562D SHEET NO. 18  
R/W SHEET NO.

ROADWAY DESIGN ENGINEER  
HYDRAULICS ENGINEER

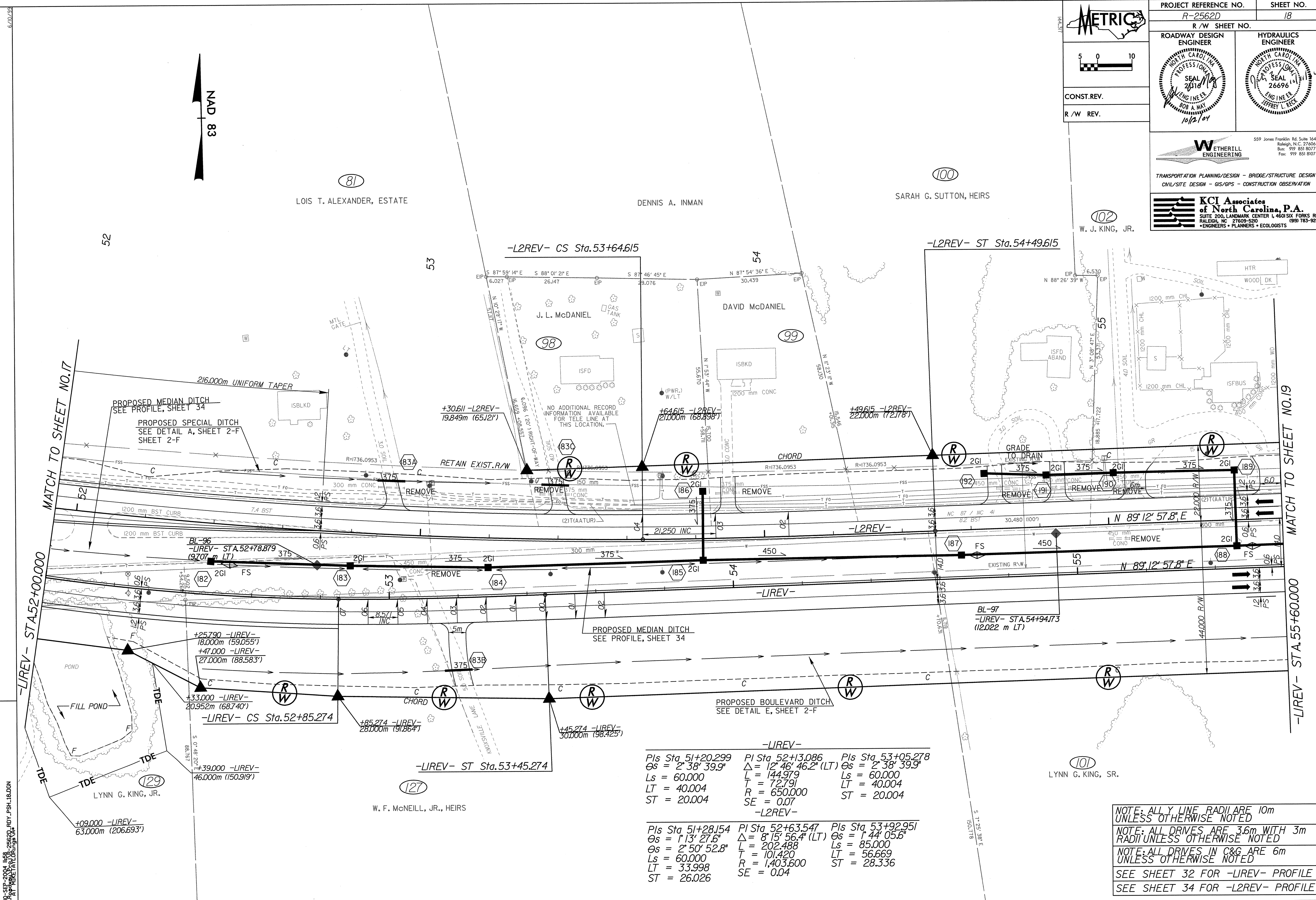
CONST. REV.  
R/W REV.

5 0 10

559 Jones Franklin Rd. Suite 164  
Raleigh, N.C. 27606  
Bus: 919 851 8077  
Fax: 919 851 9107

TRANSPORTATION PLANNING/DESIGN - BRIDGE/STRUCTURE DESIGN  
CIVIL/SITE DESIGN - GIS/GPS - CONSTRUCTION OBSERVATION

**KCI Associates of North Carolina, P.A.**  
SUITE 200, LANDMARK CENTER I, 460 SIX FORKS RD.  
RALEIGH, NC 27609-5200 (919) 783-9214  
ENGINEERS • PLANNERS • ECOLOGISTS



-LIREV-		
Pls Sta 51+20.299	Pls Sta 52+13.086	Pls Sta 53+05.278
$\Delta s = 2' 38' 39.9"$	$\Delta = 12' 46' 46.2" (LT)$	$\Delta s = 2' 38' 39.9"$
Ls = 60.000	L = 144.979	Ls = 60.000
LT = 40.004	T = 72.791	LT = 40.004
ST = 20.004	R = 650.000	ST = 20.004
	SE = 0.07	
-L2REV-		
Pls Sta 51+28.154	Pls Sta 52+63.547	Pls Sta 53+92.951
$\Delta s = 1' 13' 27.6"$	$\Delta = 8' 15' 56.4" (LT)$	$\Delta s = 1' 44' 05.6"$
$\Delta s = 2' 50' 52.8"$	L = 202.488	Ls = 85.000
Ls = 60.000	T = 101.420	LT = 56.669
LT = 33.998	R = 1,403.600	ST = 28.336
ST = 26.026	SE = 0.04	

NOTE: ALL Y LINE RADII ARE 10m UNLESS OTHERWISE NOTED

NOTE: ALL DRIVES ARE 3.6m WITH 3m RADII UNLESS OTHERWISE NOTED

NOTE: ALL DRIVES IN C&G ARE 6m UNLESS OTHERWISE NOTED

SEE SHEET 32 FOR -LIREV- PROFILE

SEE SHEET 34 FOR -L2REV- PROFILE