

METRIC

PROJECT REFERENCE NO. R2562D SHEET NO. 21

R/W SHEET NO.

ROADWAY DESIGN ENGINEER: NORTH CAROLINA PROFESSIONAL SEAL 2116 ENGINEER BOB A. WATSON

HYDRAULICS ENGINEER: NORTH CAROLINA PROFESSIONAL SEAL 26696 ENGINEER JEFFREY L. TERRY

CONST. REV.

R/W REV.

11-23-04

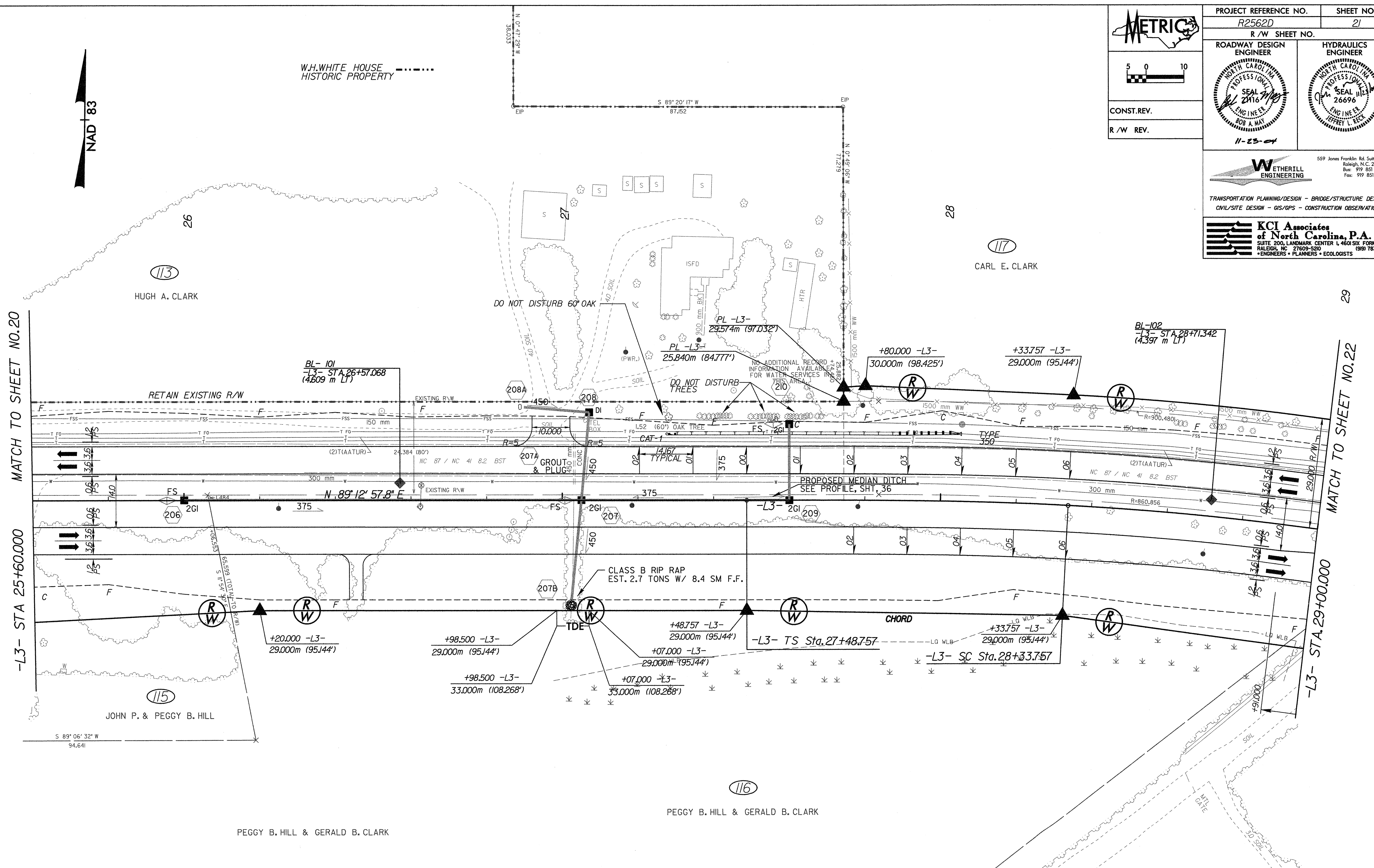
WETHERILL ENGINEERING

559 Jones Franklin Rd. Suite 164 Raleigh, N.C. 27606
 Tel: 919 851 8077 Fax: 919 851 8107

TRANSPORTATION PLANNING/DESIGN - BRIDGE/STRUCTURE DESIGN
 CIVIL/SITE DESIGN - GIS/GPS - CONSTRUCTION OBSERVATION

KCI Associates of North Carolina, P.A.

SUITE 200, LANDMARK CENTER I, 4601 SIX FORKS RD. RALEIGH, NC 27609-5210
 ENGINEERS • PLANNERS • ECOLOGISTS



-L3-

Pls Sta 28+05.432	Pl Sta 28+93.915	Pls Sta 29+82.187
Os = 3° 02' 37.8"	Δ = 8° 36' 02.7" (RT)	Os = 3° 02' 37.8"
Ls = 85.000	L = 120.089	Ls = 85.000
LT = 56.675	T = 60.158	LT = 56.675
ST = 28.341	R = 800.000	ST = 28.341
	SE = 0.06	

NOTE: ALL CURVE RADII ARE 10m UNLESS OTHERWISE NOTED

NOTE: ALL DRIVES ARE 3.6m WITH 3m RADIUS UNLESS OTHERWISE NOTED

NOTE: ALL DRIVES IN C&G ARE 6m UNLESS OTHERWISE NOTED

SEE SHEET 36 FOR -L3- PROFILE

R:\3-NOV-2004\1535\2562D\ROY.PSH.21.DGN
 11/23/04 10:53 AM WETHERILL-BOB