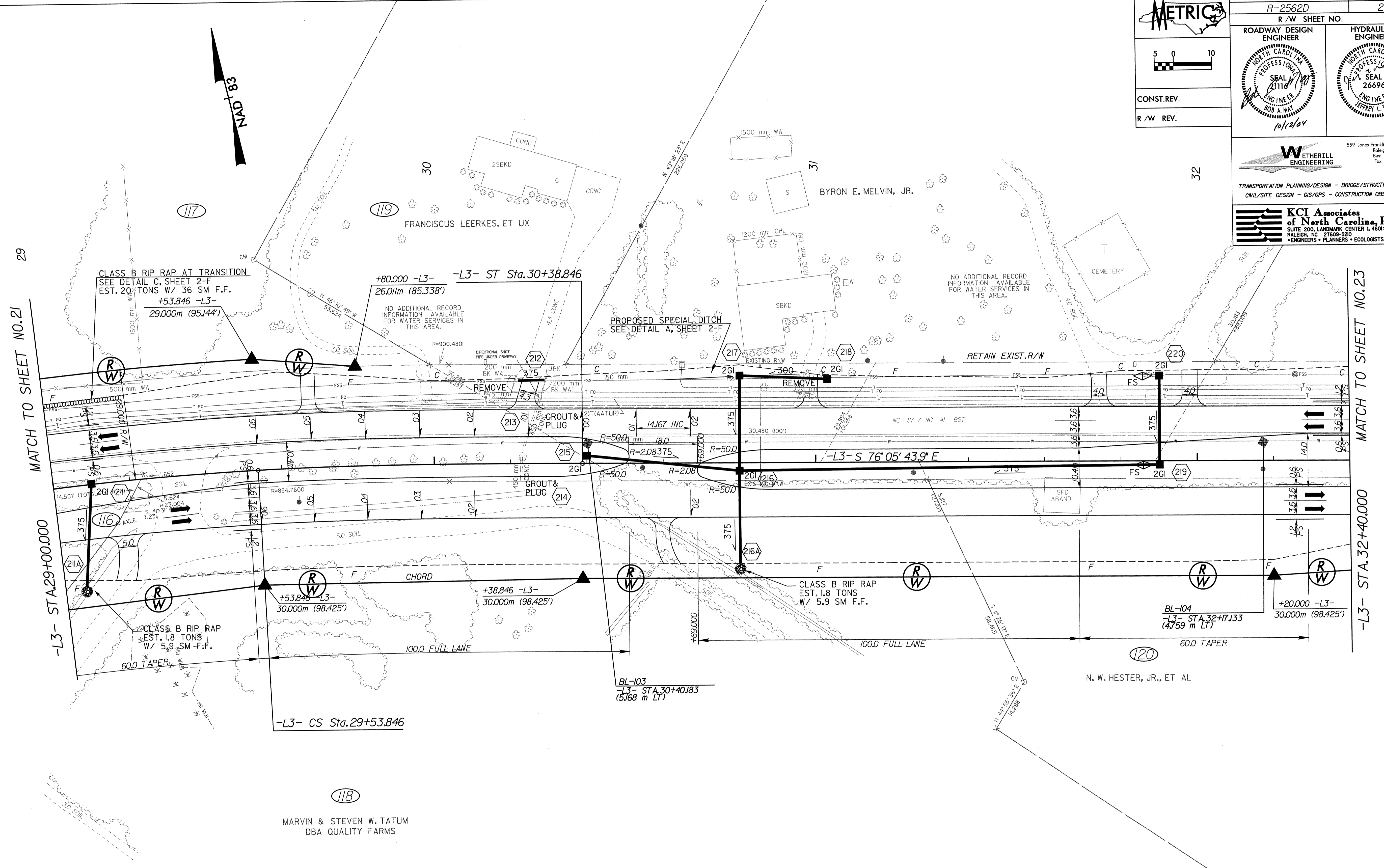


PROJECT REFERENCE NO. R-2562D SHEET NO. 22
 R/W SHEET NO.
 ROADWAY DESIGN ENGINEER
 HYDRAULICS ENGINEER
 METRIC
 5 0 10
 CONST. REV.
 R/W REV.
 WETHERILL ENGINEERING
 559 Jones Franklin Rd. Suite 164
 Raleigh, N.C. 27606
 Bus: 919 851 8077
 Fax: 919 851 8107
 TRANSPORTATION PLANNING/DESIGN - BRIDGE/STRUCTURE DESIGN
 CIVIL/SITE DESIGN - GIS/GPS - CONSTRUCTION OBSERVATION
 KCI Associates of North Carolina, P.A.
 SUITE 200, LANDMARK CENTER I, 4605 FORK RD.
 RALEIGH, NC 27609-5200 919 783-9274
 ENGINEERS • PLANNERS • ECOLOGISTS



-L3-

Pls Sta 28+05.432	Pls Sta 28+93.915	Pls Sta 29+82.187
$\Delta s = 3' 02' 37.8"$	$\Delta = 8' 36' 02.7" (RT)$	$\Delta s = 3' 02' 37.8"$
$L_s = 85.000$	$L = 120.089$	$L_s = 85.000$
$LT = 56.675$	$T = 60.158$	$LT = 56.675$
$ST = 28.341$	$R = 800.000$	$ST = 28.341$
	$SE = 0.06$	

NOTE: ALL LINE RADII ARE 10m UNLESS OTHERWISE NOTED
 NOTE: ALL DRIVES ARE 3.6m WITH 3m RADI UNLESS OTHERWISE NOTED
 NOTE: ALL DRIVES IN C&G ARE 6m UNLESS OTHERWISE NOTED
 SEE SHEET 36 FOR -L3- PROFILE

5/10/25
 10-SEP-2006 12:08
 C:\WORK\2562D\RDY_PSH_22.DGN
 M:\proj\2562\2562D\RDY_PSH_22.DGN