
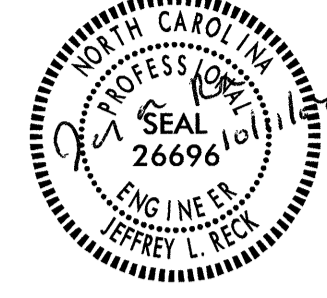


6.09.19

KCI Associates
of North Carolina, P.A.
 SUITE 200, LANDMARK CENTER I, 460 SIX FORKS RD.
 RALEIGH, NC 27609-5200 (919) 783-9244
 ENGINEERS • PLANNERS • ECOLOGISTS

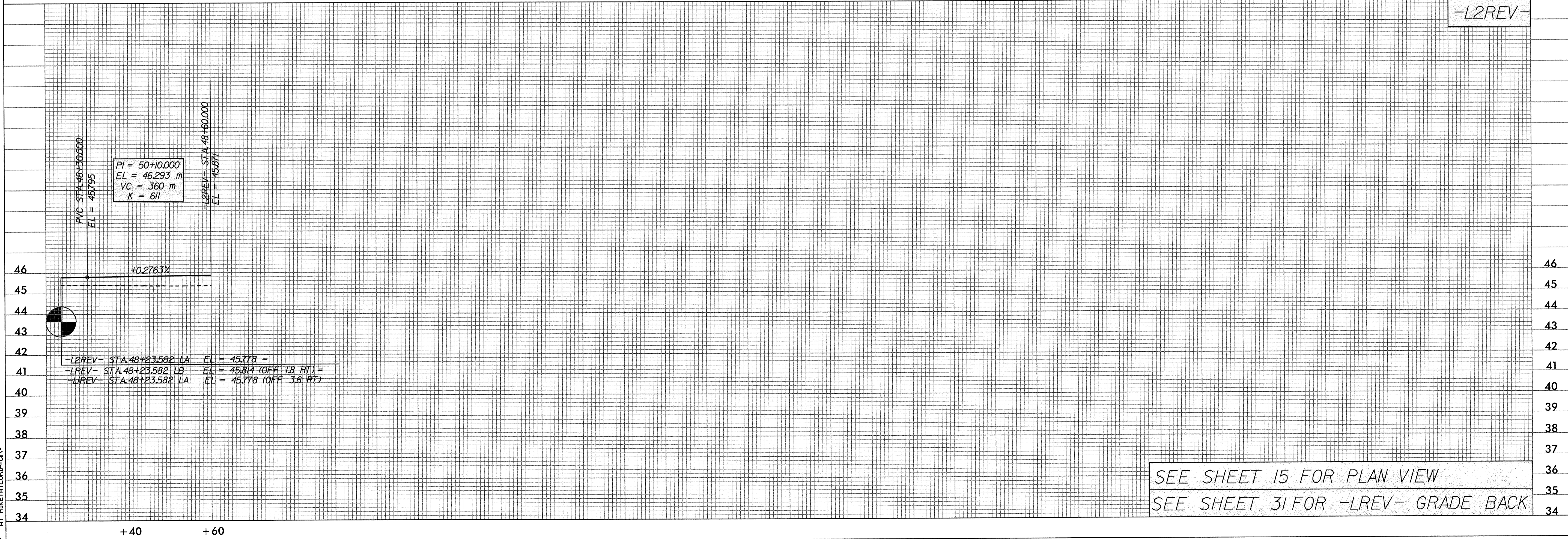
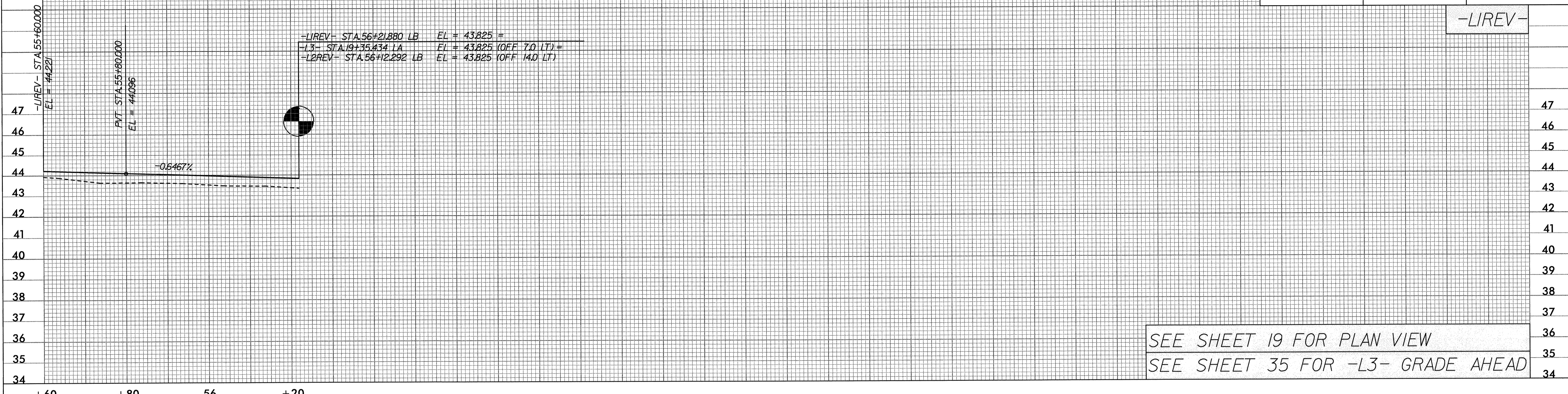
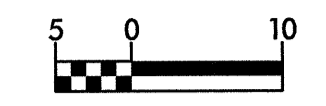
WETHERILL
ENGINEERING
 559 Jones Franklin Rd | Suite 104
 Raleigh, NC 27606
 Phone: 919-851-0672
 Fax: 919-851-8107

METRIC

PROJECT REFERENCE NO. R-2562D	SHEET NO. 33
ROADWAY DESIGN ENGINEER	HYDRAULICS ENGINEER
 BOB A. HALL 10/12/04	 JEFFREY L. BECK
CONST. REV.	
R/W REV.	

BM NCGS (JUNCTION)
 -LJ- STA 13+50.147
 OFFSET 9.859 LT.
 ELEV. 46.019

TBM #23 -LJ- 13+70.687
 OFFSET 26.754 RT. RR SPIKE
 SET IN BASE OF 24" TWIN OAK TREE
 INTERSECTION OF NC 87 & NC 41
 ELEV. 45.619



2004 12/15/04 12:30:00 AR-2562D.RD.X_PFL.DGN
 M:\proj\2562D\AR-2562D.RD.X_PFL.DGN